

1921 LYNN CIRCLE, LIBERTYVILLE

LIBERTY GROVE





ROOM DIMENSIONS

LIVING ROOM : 22' × 13'

DINING ROOM : 14' × 10'

KITCHEN : 13' × 13'

PRIMARY BEDROOM : 22' × 13'

2ND BEDROOM : 14' × 11'

3RD BEDROOM : 13' × 11'

3 BEDROOM

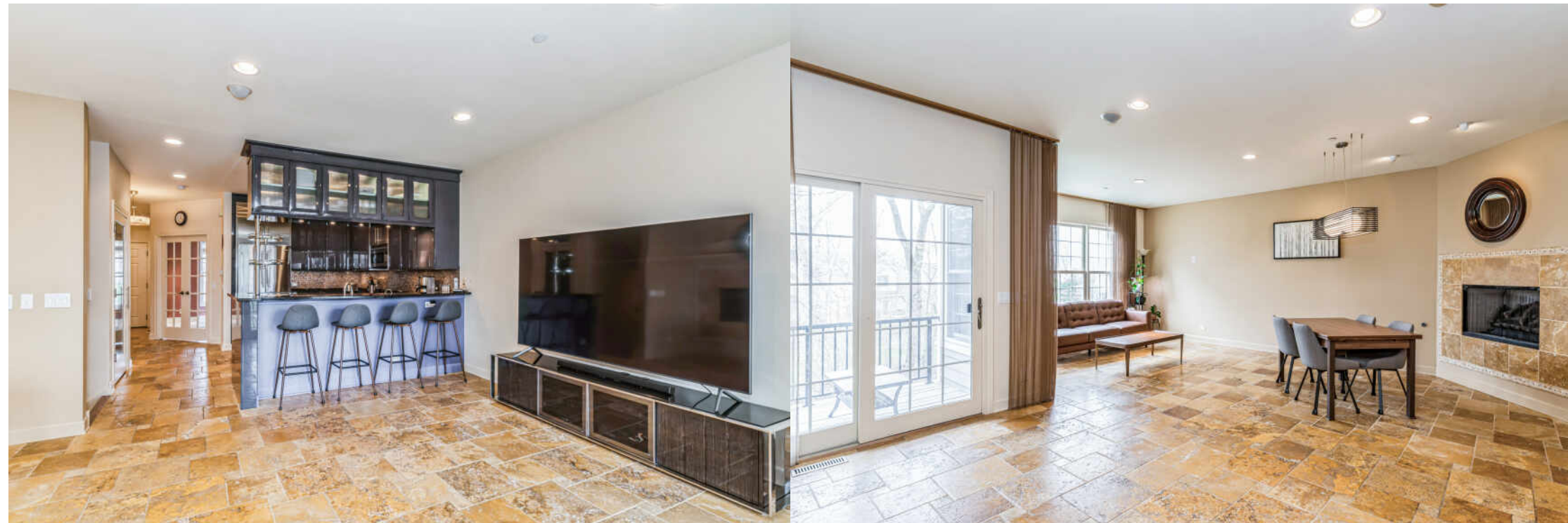
2.1 BATH

TAXES: \$11,621

ASSESSMENTS: \$454 / MONTH

MAINTENANCE FREE LIVING

Luxury townhome in a prime north Libertyville location offers tranquility with easy access to all the outdoor activities and natural beauty of Independence Grove and Adler Park & Swimming Pool plus the convenience of being just minutes away from the vibrance of downtown Libertyville, the train station and quick access to the interstate. The open floor plan on the main floor is ideal for both everyday living and entertaining. The sleek kitchen features high-end, stainless steel, appliances, custom cabinetry, a huge pantry, and a breakfast bar that opens to the dining area and living room where large windows look out to a tree-lined area and sliding glass doors access a private deck. The main floor also provides a separate office with French doors and a convenient powder room for guests. The expansive primary bedroom suite has its own full bath with dual vanities, a large glass enclosed shower stall and a generous walk-in closet plus a private balcony for some peaceful alone time. This is all located on the upper level along with two additional bedrooms supported by a full bath off the hallway also with dual vanities and a jetted tub. The lower level has access to the two-car attached garage and a fantastic laundry room with utility sink plus cabinet and counter space. There is also a large storage area which could easily be finished off to provide additional living space - rec room, exercise room, etc. All of this is in the highly regarded Libertyville school system.







LIBERTYVILLE OWES MUCH OF ITS EARLY GROWTH TO THE RAILROAD.

A spur on the Milwaukee Road train line brought rapid growth to the area, which was incorporated in 1882.

Today the Metra rail system provides a convenient commute for residents of this vibrant community.

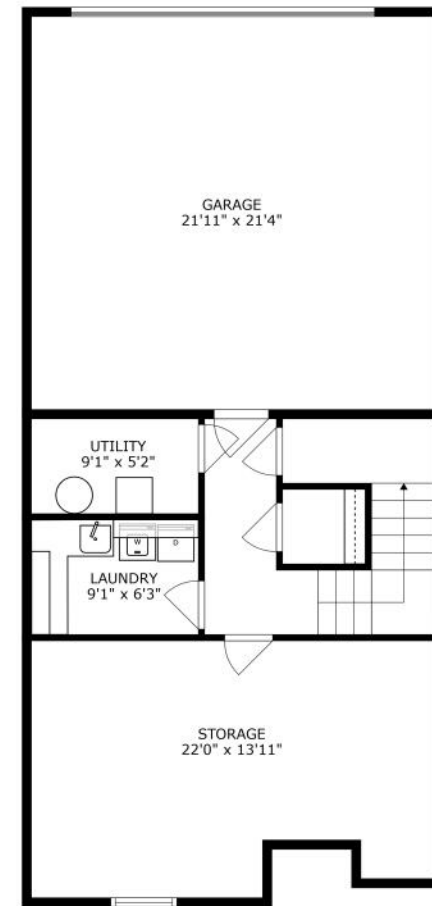
Libertyville's bustling downtown district received a Great American Main Street Award by the National Trust for Historic Preservation. The downtown was rebuilt after a fire in 1895 destroyed most of the buildings; they were rebuilt with mandated brick reconstruction, giving them a singular style.

The downtown area includes bakeries, gourmet coffee vendors, and a microbrewery. In spring and summer months, residents enjoy a farmers market that has been operating for more than three decades.

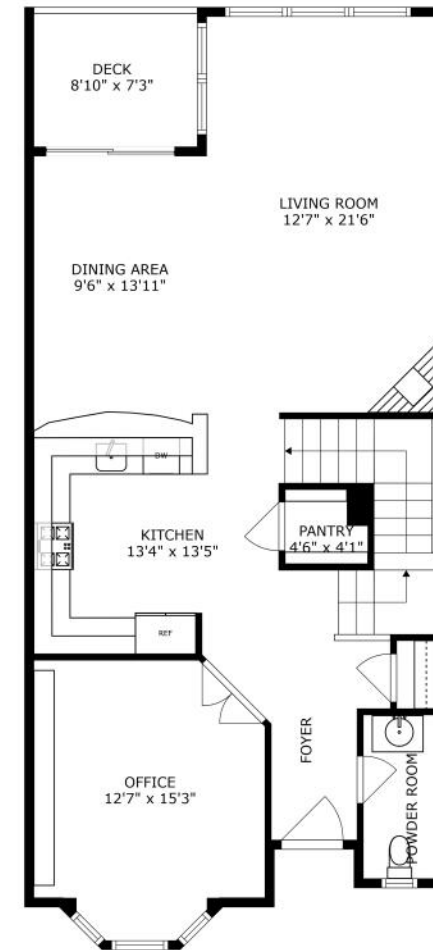
In addition to a variety of restaurants, there are upscale boutiques, antique shops, and gift stores along Milwaukee Avenue.

Residents have eight miles of bike paths and numerous parks to enjoy along with the annual Libertyville Days Festival, an outdoor concert series, and other community events.

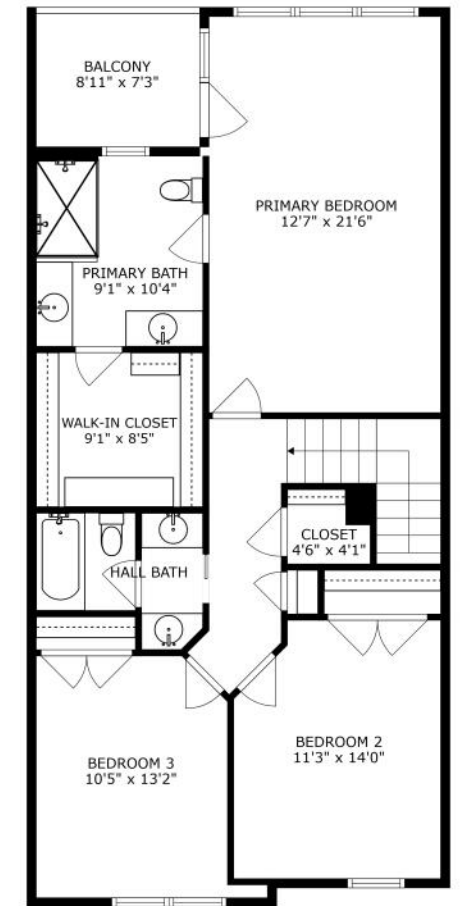
Three Metra stations and the Tri-State Tollway make for a convenient commute to downtown Chicago, O'Hare International Airport, and suburban corporate headquarters.



FLOOR 1



FLOOR 2



FLOOR 3

SIZES AND DIMENSIONS ARE APPROXIMATE, ACTUAL MAY VARY.



TERRY WILKOWSKI

REAL ESTATE BROKER

DIRECT: (847) 682-1549

TWILKOWSKI@ATPROPERTIES.COM



MARY GIBBS-MOODHE

REAL ESTATE BROKER

DIRECT: (847) 902-3357

MGIBBS@ATPROPERTIES.COM



CHRISTIE'S
INTERNATIONAL REAL ESTATE