



1929 W HURON STREET WEST TOWN

1929 W HURON STREET • WEST TOWN
1929HURON.INFO



@properties | CHRISTIE'S
INTERNATIONAL REAL ESTATE

LP LUXURY
PORTFOLIO
INTERNATIONAL



SCOTT STAVISH REAL ESTATE BROKER

773.879.4444 mobile
312.254.0200 office
scottstavish@atproperties.com
www.scottstavish.com

SCOTTSTAVISH

1929 W HURON STREET • WEST TOWN
1929HURON.INFO





1929 W HURON STREET IMMACULATE AND STATELY WEST TOWN BEAUTY

ROOM DIMENSIONS

Primary Bedroom	25'x17'
Walk In Closet	10'x7'
Primary Bath	14'x10'
Balcony	17'x4'
Second Bedroom	17'x16'
Third Bedroom	12'x9'
Fourth Bedroom	14'x9'
Fifth Bedroom/Exercise Room	16'x12'
Living Room	20'x17'
Dining Room	14'x13'
Kitchen	17'x12'
Family Room	17'x15'
Recreation Room	16'x15'
Wet Bar	8'x8'
Laundry	10'x7'
Rooftop Deck	70'x17'
Garage Roof Deck	20'x19'
Terrace	19'x13'

FEATURES

- This immaculate, stately West Town Limestone and Brick 5 bed, 3.5 bath house offers timeless finishes and incredible space inside and out
- Great flow in this open and spacious floor plan featuring great natural light, 10' ceilings and unmatched outdoor space with five distinct areas, including a full size main house roof deck and garage roof deck
- White cabinet chef's kitchen features oversized center island, separate pantry closet, full height backsplash and high end stainless steel appliances
- Walk out terrace leads to turfed garage roof deck with pergola
- 2nd floor features a gracious primary suite offering a walk out balcony overlooking your gorgeous green garage roof deck
- Sumptuous primary bathroom offers walk in shower, separate jetted tub, double vanity, radiant heated floors and a large walk in closet with built-in organizers
- Lower level provides radiant heated floors, 4th and 5th bedrooms, full bath with walk in steam shower and bench seating, and a large family room with wet bar, beverage fridge, honed granite countertops and large island
- Unparalleled main house roof deck features maintenance free Trex decking, pergola, wired for outdoor TV, gas/water/electric and incredible skyline city views
- Tons of quality and wonderful detail throughout including 8' doors, hardwood floors, wood burning fireplace with gas starter, recessed lighting, casement windows, skylight, Juliet balcony, built-in speakers, top-down Hunter Douglas shades and custom millwork



SCOTT STAVISH REAL ESTATE BROKER

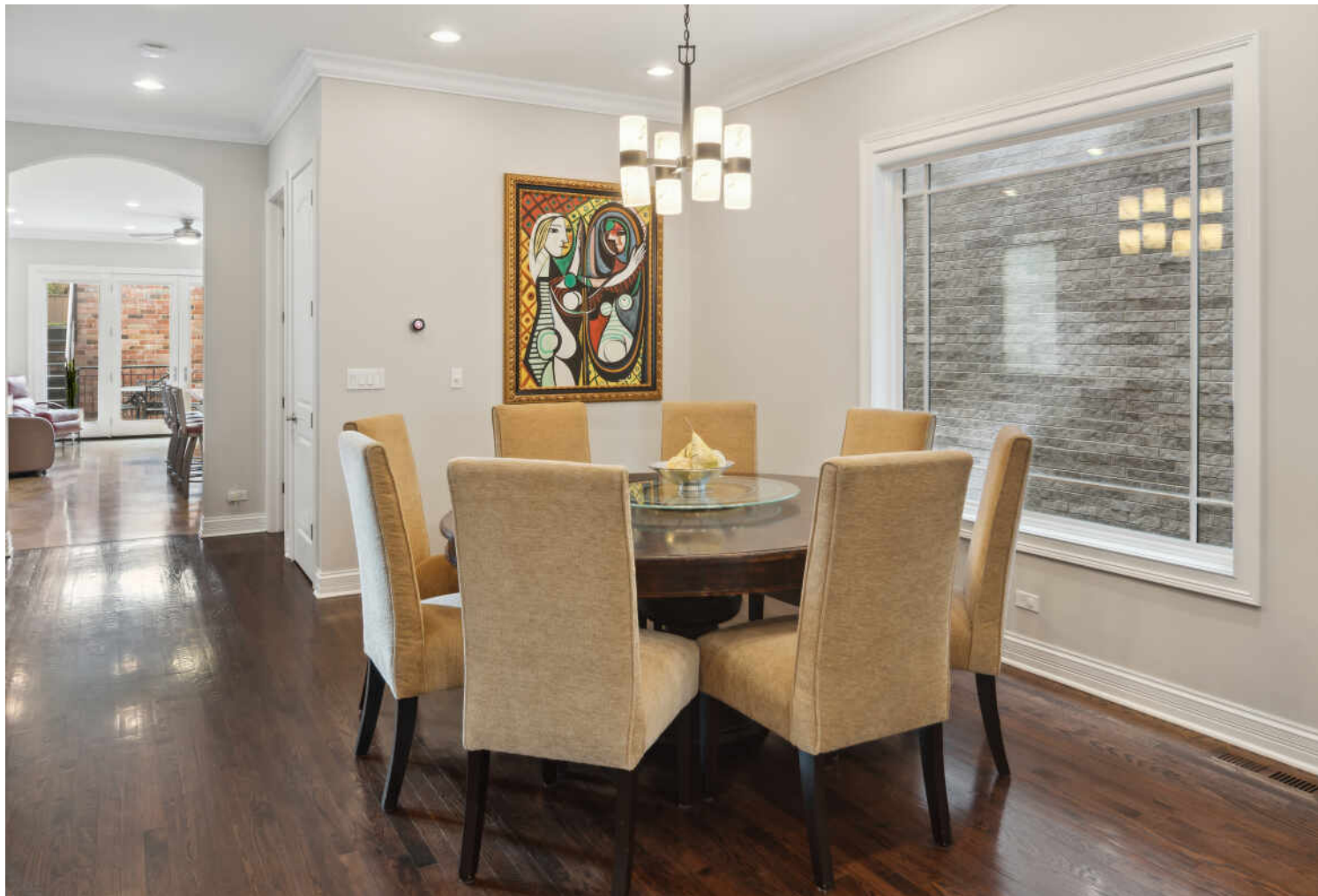
773.879.4444 mobile
312.254.0200 office

scottstavish@atproperties.com
www.scottstavish.com

SCOTTSTAVISH REAL ESTATE









































SIZES AND DIMENSIONS ARE APPROXIMATE, ACTUAL MAY VARY.

@properties® | CHRISTIE'S
INTERNATIONAL REAL ESTATE

Leading REAL ESTATE
COMPANIES
OF THE WORLD®

LP
LUXURY
PORTFOLIO
INTERNATIONAL®

