

193 ROSEHALL DRIVE
LAKE ZURICH





**CHIC, ELEGANT, AND SIMPLY STUNNING, THIS
LIGHT-FILLED TOWNHOME HAS BEEN LOVINGLY
MAINTAINED AND BEAUTIFULLY UPDATED
THROUGHOUT!**

From the moment you step inside, you'll feel the warmth and care that's gone into every detail. The open-concept main level features a striking double-sided fireplace that adds cozy charm to both the living and dining areas. The updated kitchen is a chef's dream with granite countertops, crisp white cabinetry, and sliding doors leading to a private balcony-perfect for morning coffee or dining alfresco. A convenient half bath and laundry room are also found on the main level. Upstairs, both bedrooms are generously sized and feature ensuite baths. The primary suite is a true retreat with vaulted ceilings, a walk-in closet outfitted with new custom organizers, and plenty of natural light. The finished English lower level offers a bright and versatile space ideal for a family room, rec room, or home office, plus direct access to the attached two-car garage for added convenience. Enjoy all the amenities of sought-after Concord Village, including a community pool and clubhouse. With a brand-new roof installed in 2025, newer windows and doors, updated baths, modern lighting, and new wood blinds throughout, this turnkey home checks every box. Ideally located near shopping, dining, charming downtown Lake Zurich, parks, the lake, and award-winning District 95 schools-this one is a perfect 10!







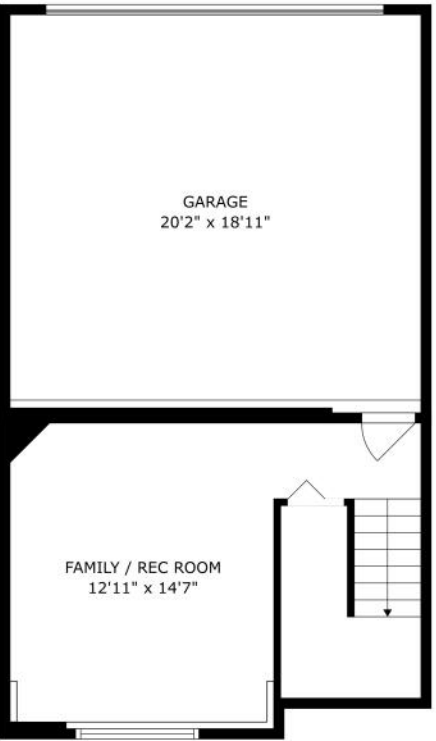
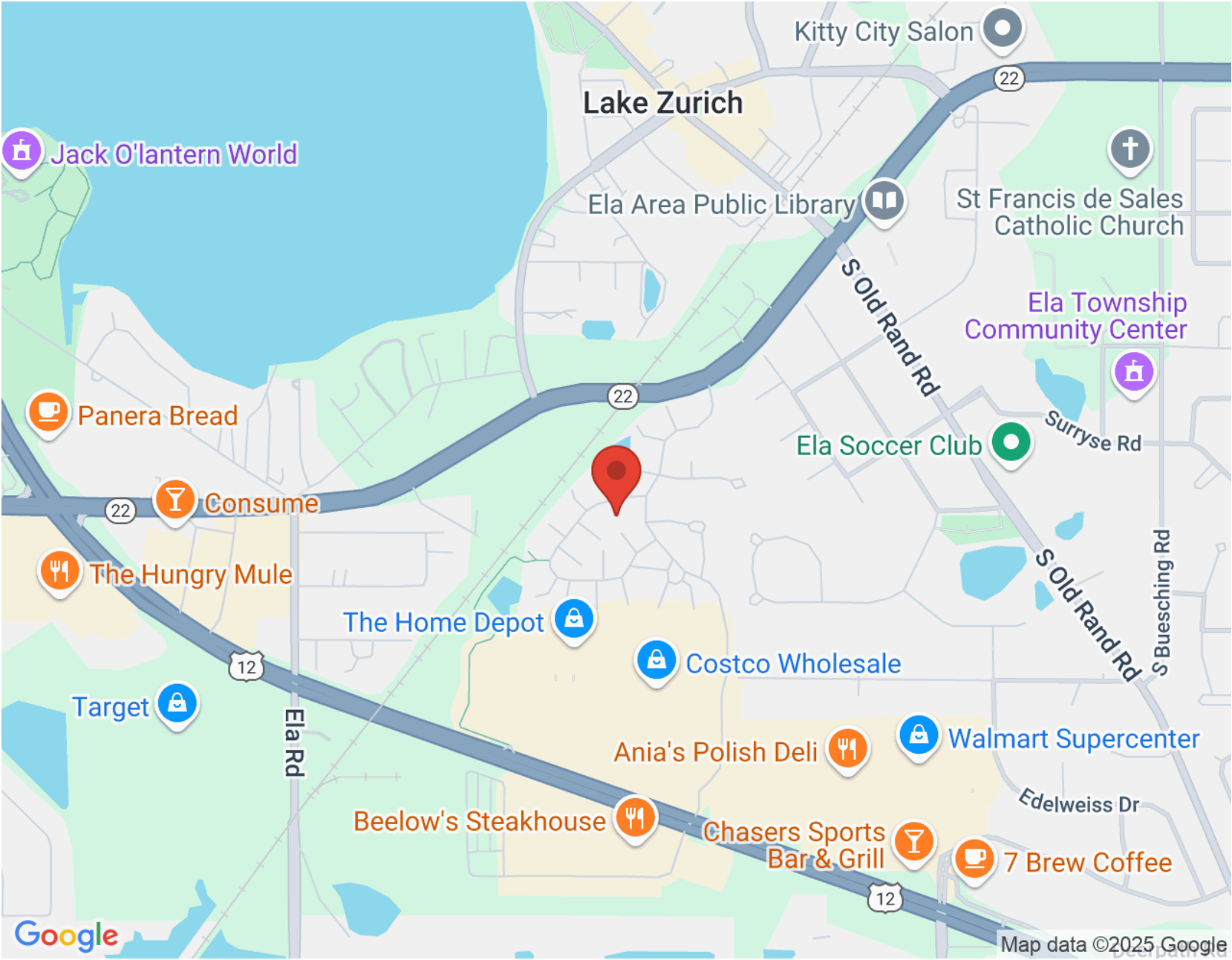
AT THE HEART OF THE IDYLIC VILLAGE OF
LAKE ZURICH IS ITS NAMESAKE LAKE.

A charming boardwalk lines the lake near Main Street.

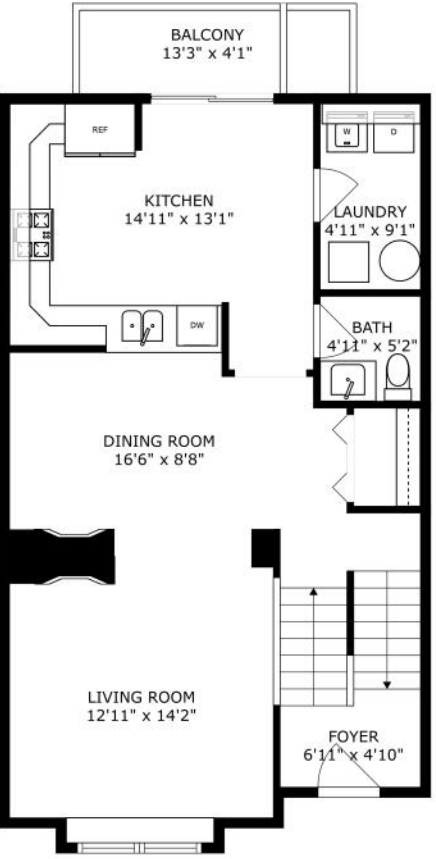
The village regularly appears on “best places” lists, and has been named one of the “Top 20 Affordable Places to Live in the Country” by *U.S. News*. Lake Zurich boasts a variety of single-family homes, custom new construction, and townhomes with neighborhood green space, ponds, and parks.

The community has a small-town feel, and hosts several local events. Since 1942, Lake Zurich’s Alpine Fest has been a neighborhood favorite, attracting more than 10,000 visitors for good old-fashioned carnival rides, entertainment, and a parade down Main Street.

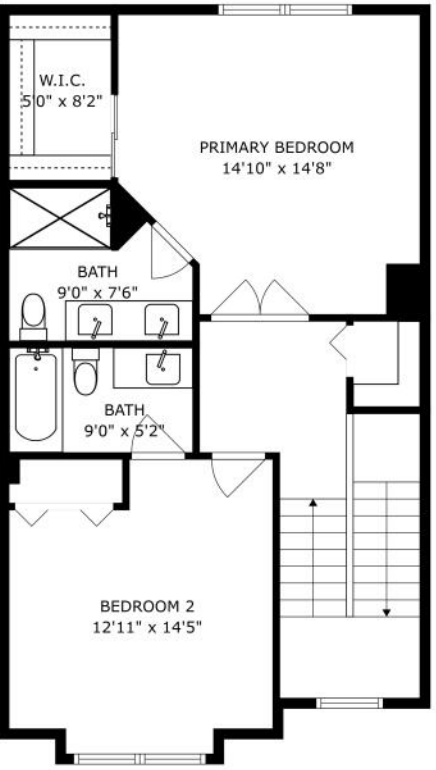
Residents have easy access to nearby I-90 and Metra stations in Palatine and Barrington.



FLOOR 1



FLOOR 2



FLOOR 3

SIZES AND DIMENSIONS ARE APPROXIMATE, ACTUAL MAY VARY.



JOHN MORRISON

(847) 409-0297

JOHN@MORRISONHOMETEAM.COM

WWW.MORRISONHOMETEAM.COM

@MORRISON_HOME_TEAM



All specifications, features, designs, price, assessments, taxes and materials are subject to change without notice. Depicted floor plans and architectural renderings are only an artist's impression.

