



1940 N. MOHAWK ST. #1 LINCOLN PARK

1940 N. MOHAWK ST. #1 • LINCOLN PARK
1940MOHAWK1.INFO



CARRIE MCCORMICK BROKER

312.961.4612 mobile
carrie@atproperties.com
www.carriemccormickRE.com

1940 N. MOHAWK ST. #1 • LINCOLN PARK
1940MOHAWK1.INFO





AN EXCEPTIONAL HOME IN THE HEART OF LINCOLN PARK - DEVELOPED BY CASHEL HOMES, THIS DUPLEX-DOWN CHECKS ALL THE BOXES

FEATURES

You will feel right at home when you approach the limestone facade. Once you step inside, you are greeted by high ceilings, home automation, a Sonos audio system, custom window treatments, Restoration Hardware lighting, luxurious finishes throughout, and best of all... an abundance of light! The main floor of this home features a true chef's kitchen with custom cabinets, including a stunning island with walnut cabinetry, quartz counters, and backsplash - appliances by Sub-Zero and an iconic Wolf range with pot filler. This chef's kitchen was also designed with a walk-in pantry with electrical for your appliances and a butler's pantry that closes off to the dining and east-facing living room centered around the gas fireplace. Just off the kitchen is the west-facing family room that captures amazing light and features a connected covered terrace. This family room has been designed with custom walnut cabinetry and a true entertainer wet bar with a beverage center, ice maker, and shelving. Step out the sliding doors to your three private outdoor spaces, including a covered terrace with a feature wall with built-in TV, a private fenced-in yard with grass, and your garage roof deck with privacy walls and a relaxing hot tub. All three outdoor spaces are entirely private just for you! This main level also features a convenient mud room and powder room. The lower bedroom floor has 4 bedrooms and 4 full en suite baths and features heated floors throughout. The primary bedroom has a large, professionally organized walk-in by California closet and elegant bath with custom cabinetry, double vanities, radiant heated floors, a steam shower, a free-standing air tub, and tons of storage.



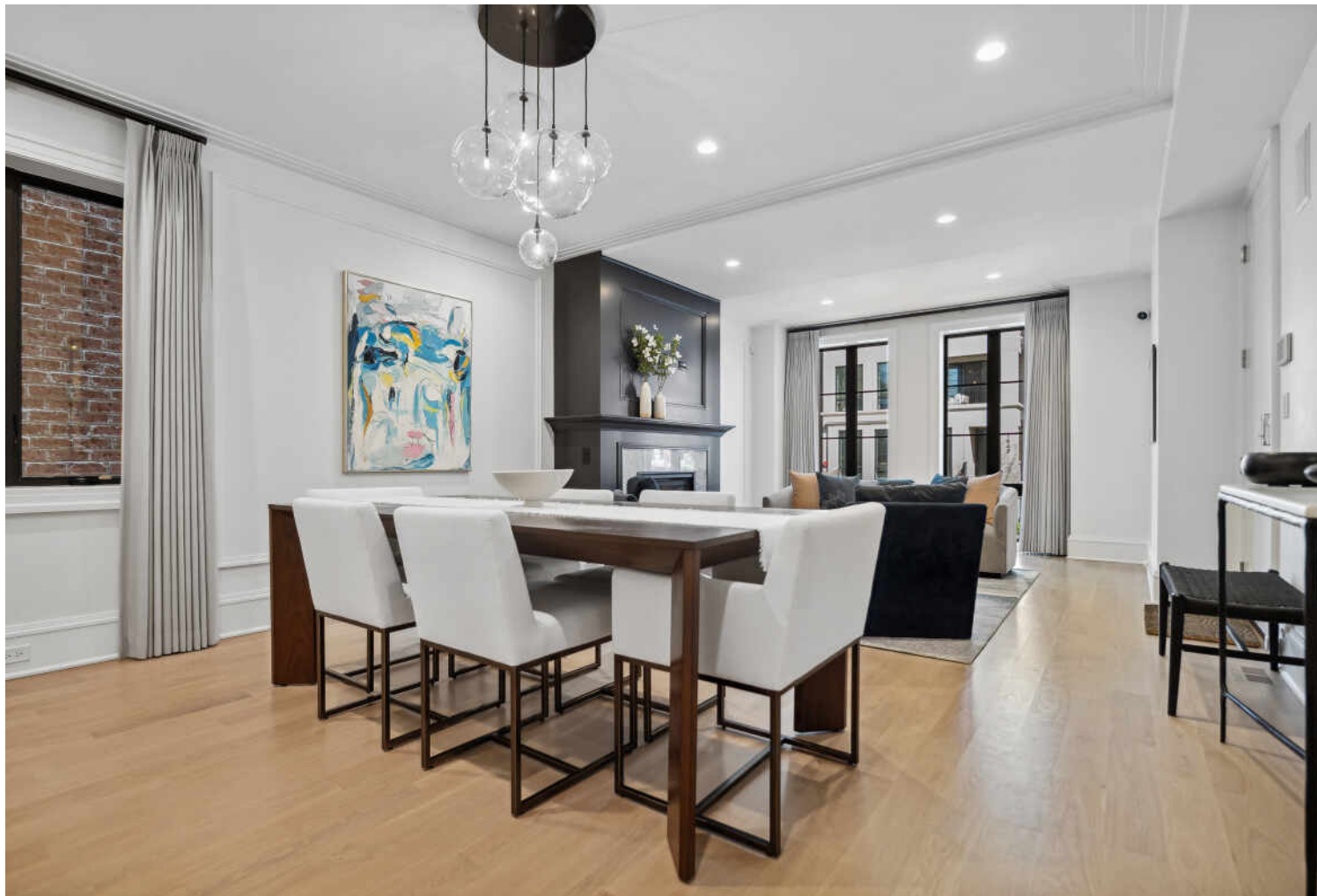
CARRIE MCCORMICK BROKER

312.961.4612 mobile

carrie@atproperties.com
www.carriemccormickRE.com















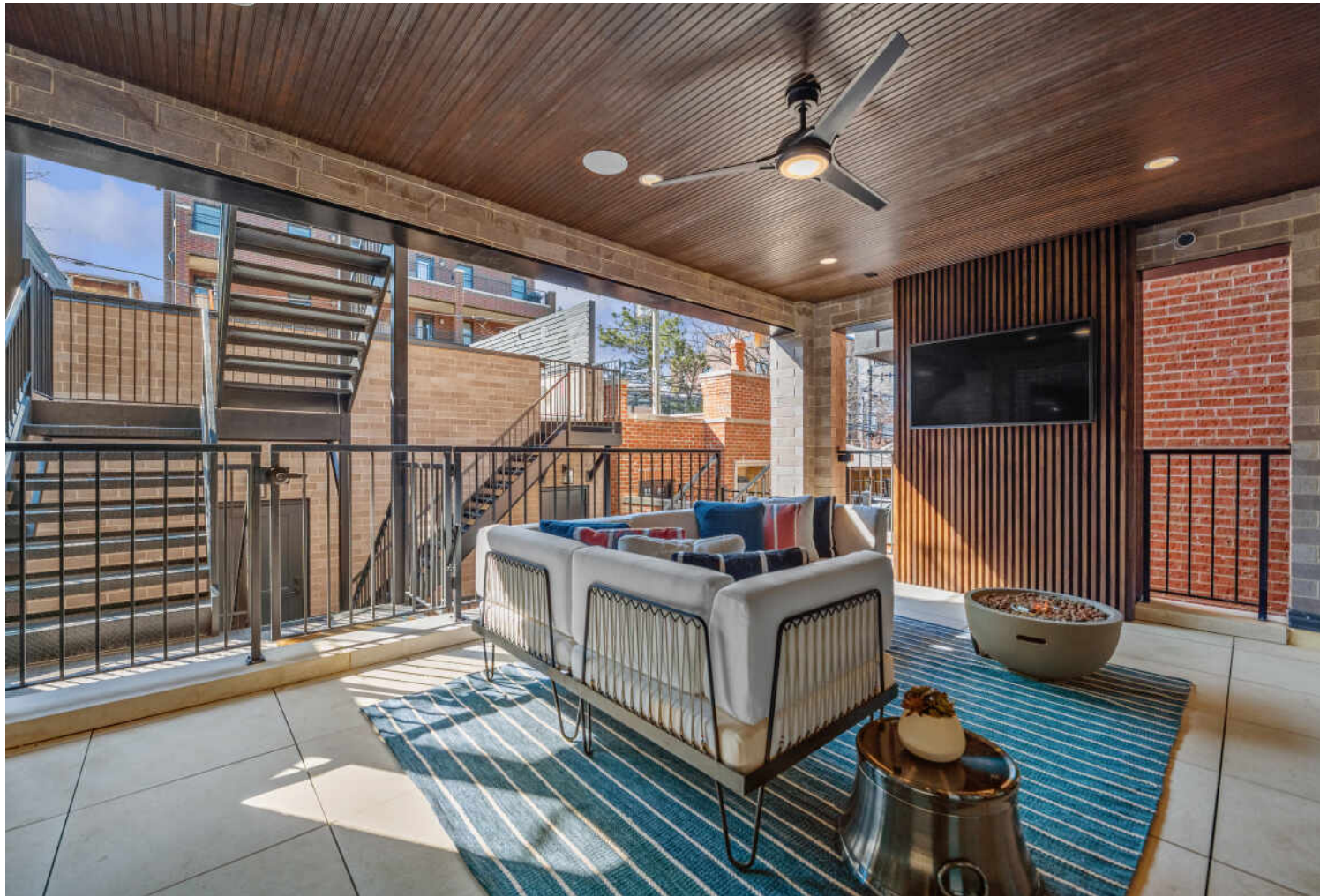








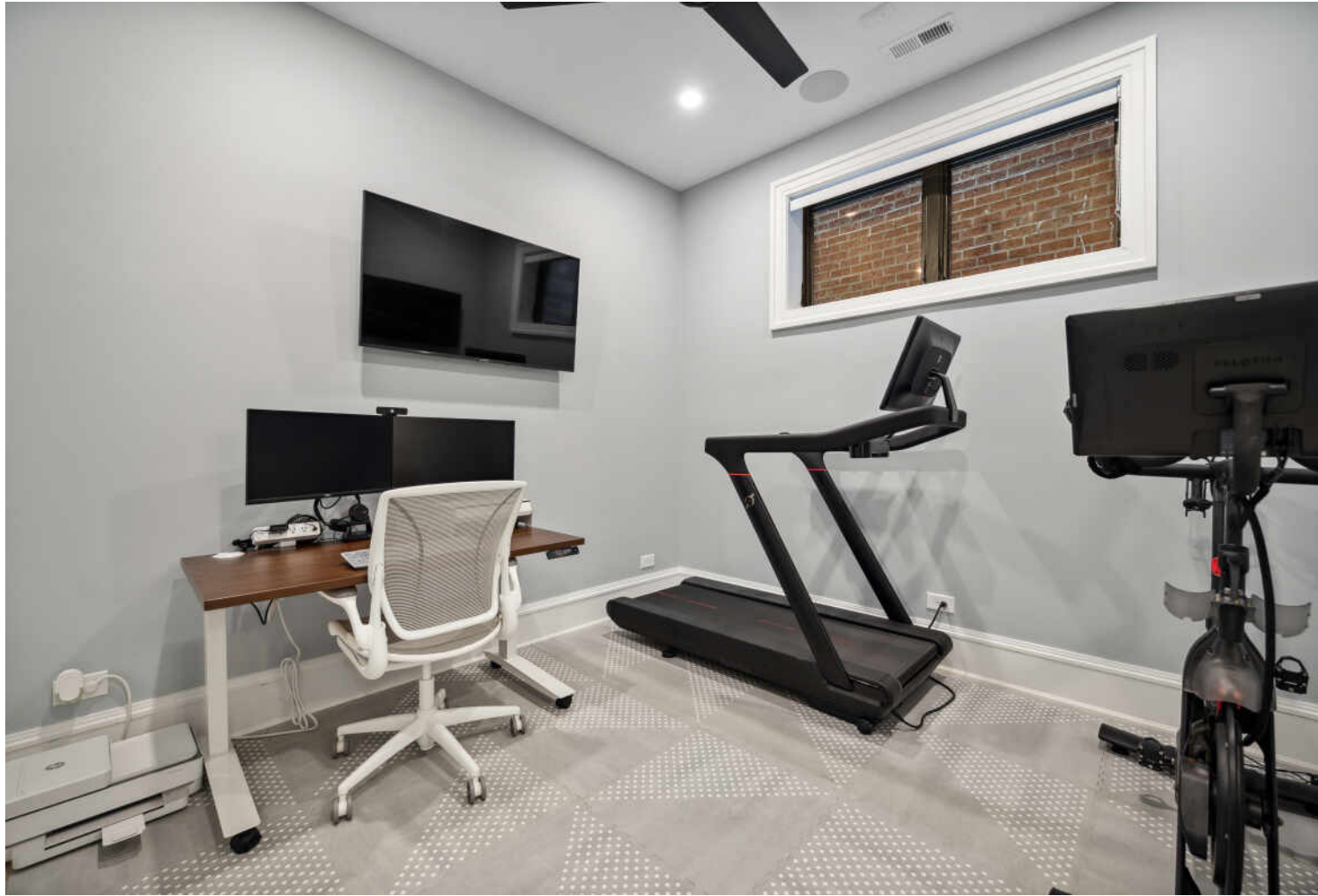












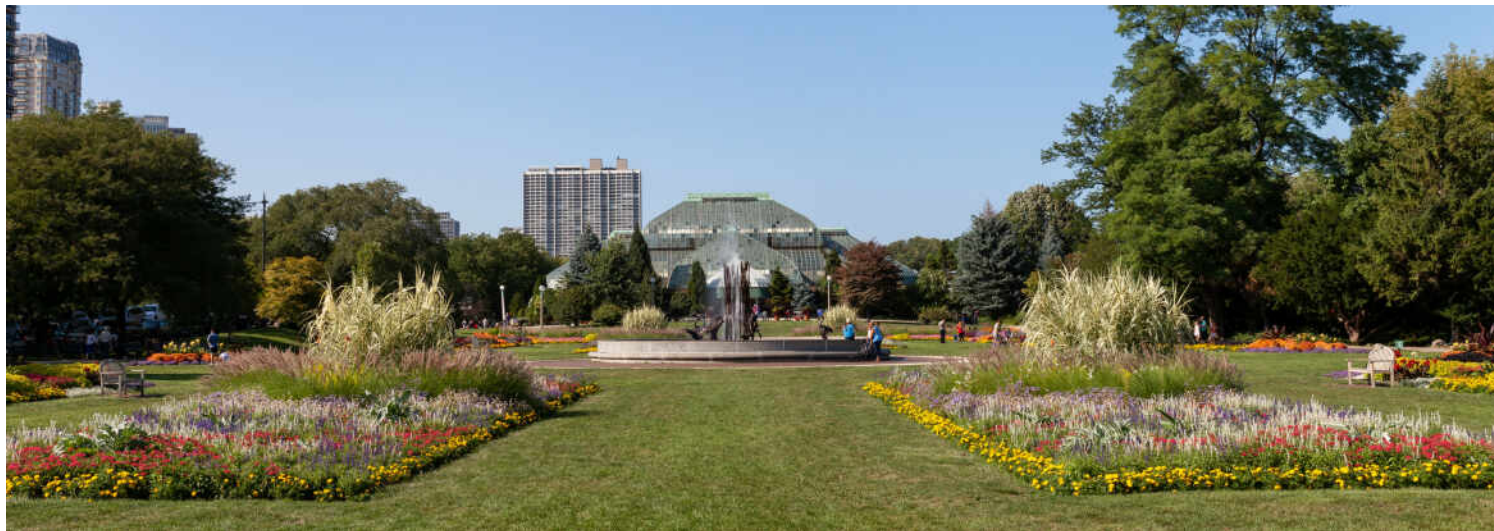












LINCOLN PARK RESIDENTS HAVE IT ALL – FROM THE ARTS TO ITS FAMED ZOO – RIGHT IN THEIR BACKYARD.

Locals love the many parks, shops, restaurants and tree-lined streets. The lakefront is another highlight where residents enjoy a variety of leisure activities at North Avenue Beach.

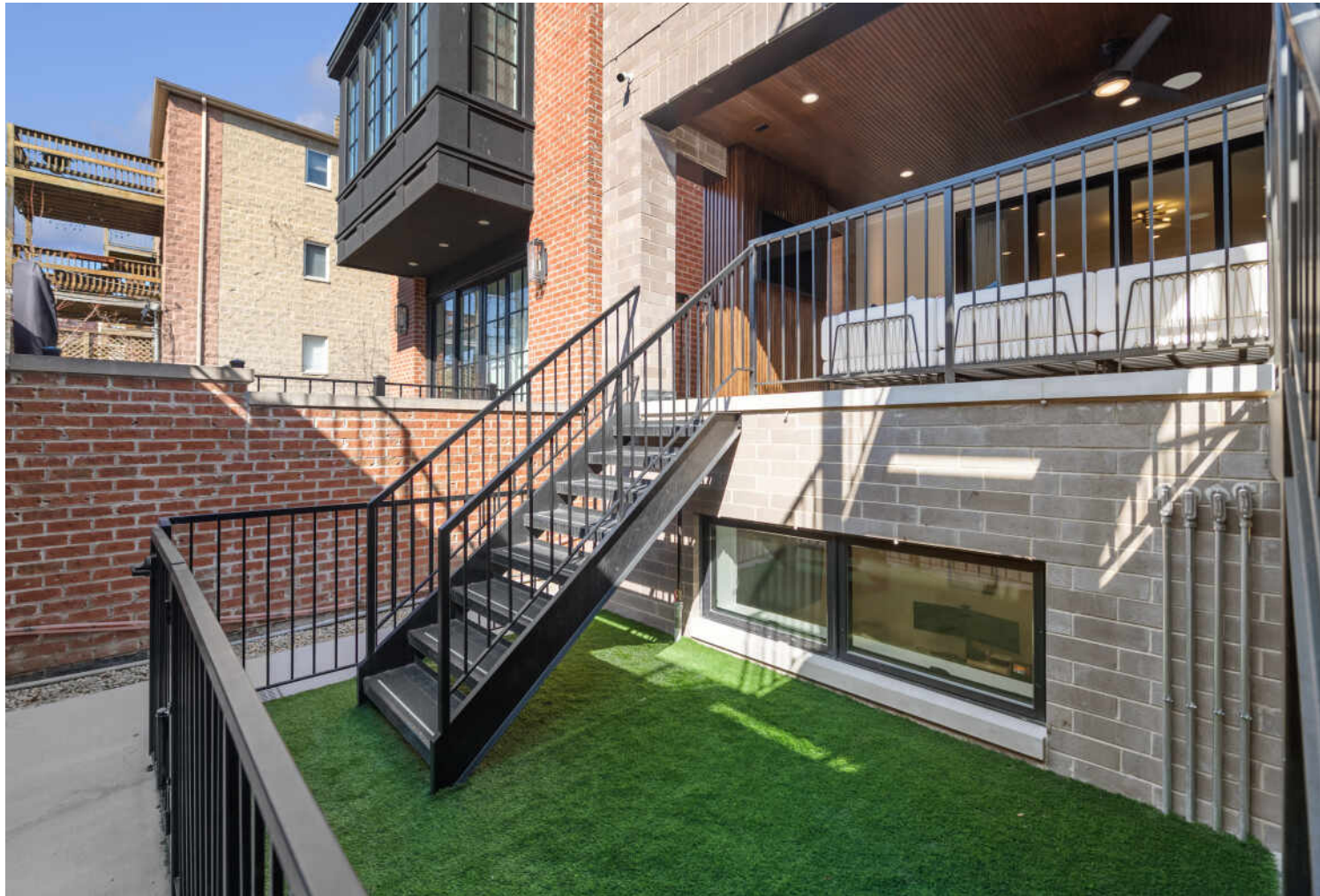
The neighborhood includes quiet tree-lined residential blocks, DePaul University, and two major museums in addition to the Lincoln Park Zoo, one of the country's oldest zoos. There's also a wide array of entertainment, eateries, and hotspots.

An evening in Lincoln Park might include seeing a play at the acclaimed Steppenwolf Theatre and dining at a Michelin-rated restaurant or a quaint neighborhood café. Sports fans will find as many dive bars with the game on as foodies will find fine-dining restaurants with al-fresco seating.

Lincoln Park is just as delightful by day. Residents are close to the lakefront and North Avenue Beach, parks, farmers markets, festivals, and countless shops, ranging from upscale boutiques on Armitage to larger retailers at the Clybourn Corridor.

Housing stock ranges from smaller townhomes and vintage condominiums to rehabs and new construction. Buyers around DePaul University can find loft condominiums in converted factories and warehouses. On its eastern edge, Lincoln Park features beautiful vintage brownstones along with high-rises with breathtaking views of the lake, park, North Pond Nature Sanctuary, and city skyline.

Located just two miles from downtown, Lincoln Park offers residents a quick commute to work. Public transportation abounds, with the CTA's Brown and Red lines serving the neighborhood in addition to several bus routes and Lake Shore Drive.





@properties® | CHRISTIE'S
INTERNATIONAL REAL ESTATE

Leading REAL ESTATE
COMPANIES
OF THE WORLD®

LP
LUXURY
PORTFOLIO
INTERNATIONAL®

