



**1945 N SHEFFIELD AVENUE 203**  
RANCH TRIANGLE

**@properties®**



ROOM DIMENSIONS  
LIVING /DINING ROOM : 16' × 15'  
KITCHEN : 12' × 8'  
MASTER BEDROOM : 13' × 10'  
2ND BEDROOM : 12' × 11'  
DECK : 12' × 13'

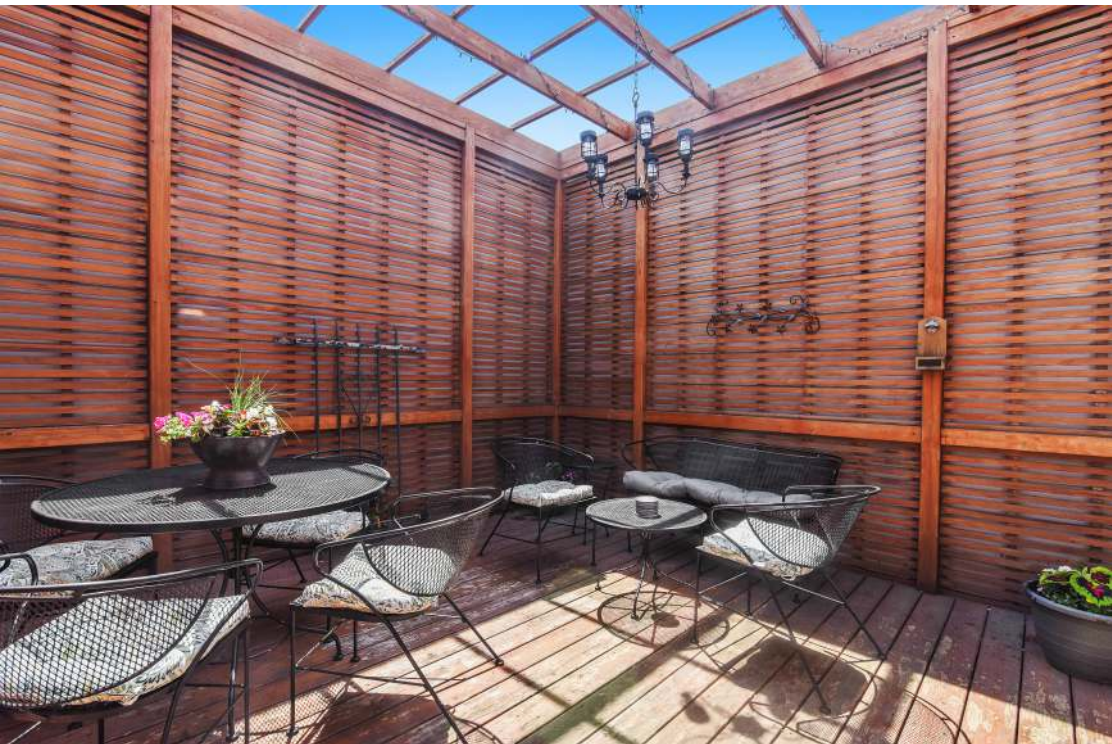
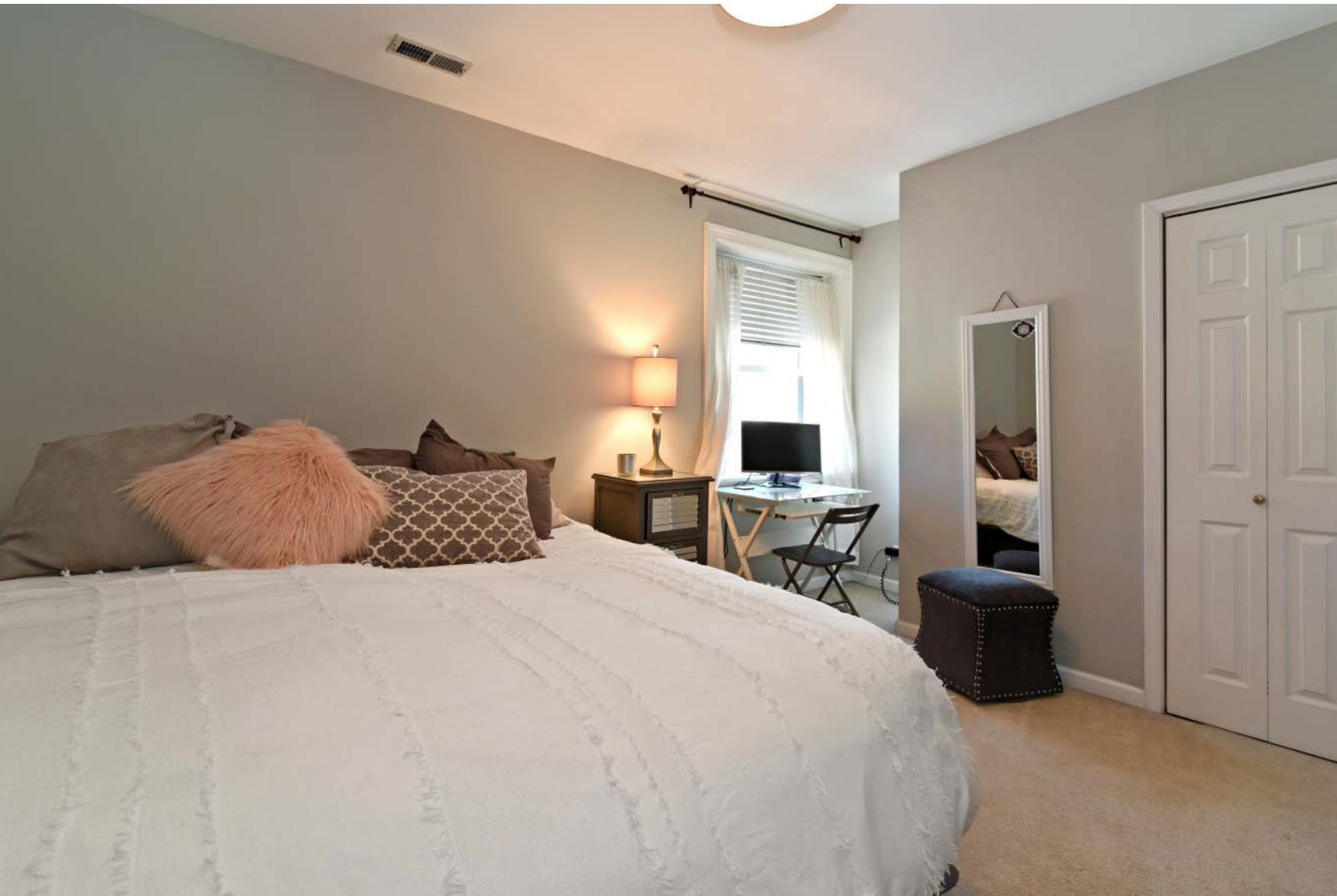
2 BEDROOM  
1 BATH  
TAXES: \$6006.23  
ASSESSMENTS: 405

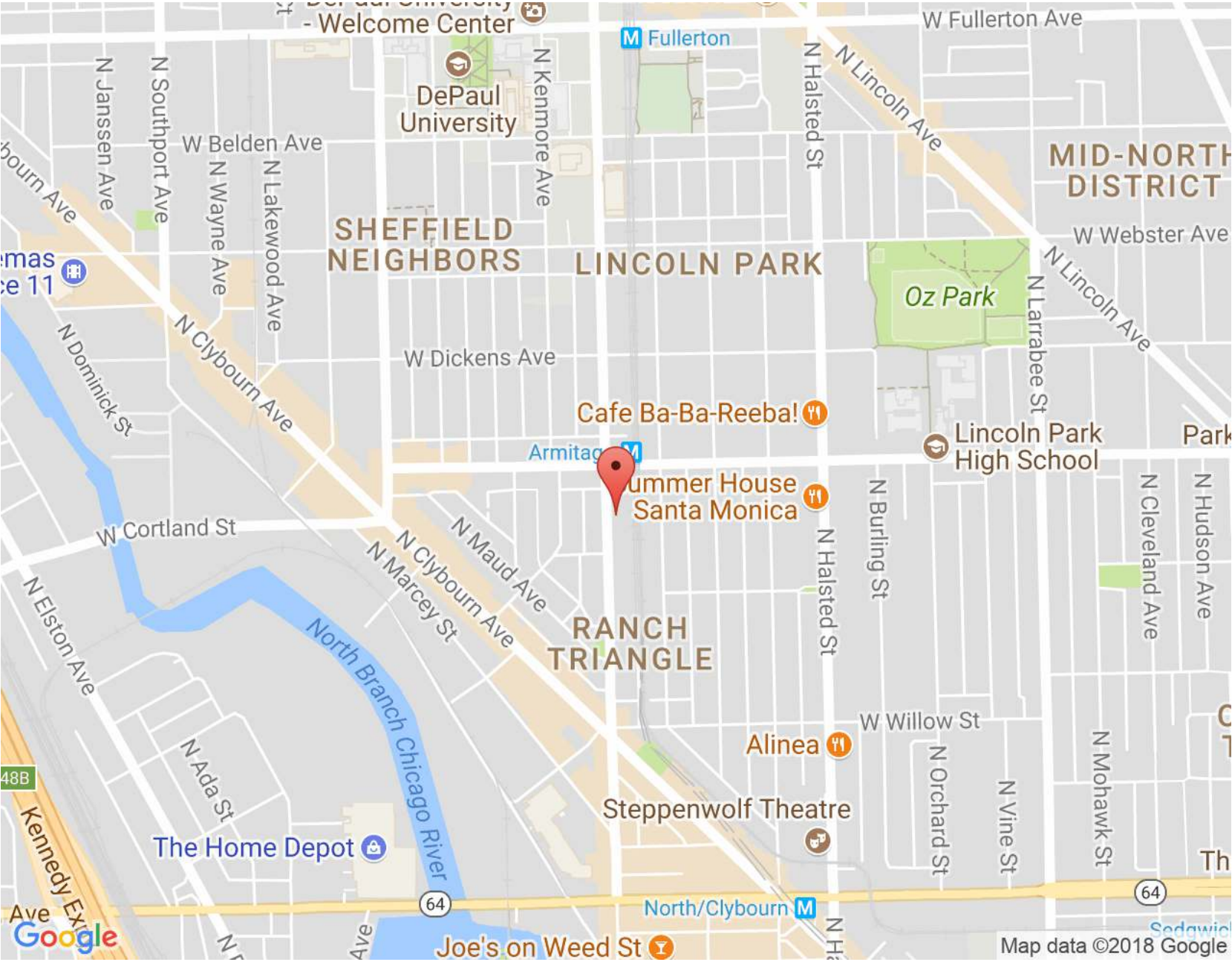
## STUNNING LINCOLN PARK CONDO

- Gorgeous deck off the living room-perfect for entertaining
- Spacious kitchen that opens to dining room and living room
- Kitchen includes: white cabinets, granite countertops, and stainless steel appliances
- Both bedrooms are generous in size and have great closet space
- Lovely bathroom includes a whirlpool tub
- In unit washer/dryer
- Building roof deck includes: grills, tables, and breathtaking views of the skyline
- Additional storage locker
- Just steps away the Brown Line station, shops, restaurants, and entertainment located on Armitage and Sheffield









NOTES \_\_\_\_\_

\_\_\_\_\_

\_\_\_\_\_

\_\_\_\_\_

\_\_\_\_\_

\_\_\_\_\_

\_\_\_\_\_

\_\_\_\_\_

\_\_\_\_\_

\_\_\_\_\_

\_\_\_\_\_



## BRUCE GLAZER

(765) 914-8199

BGLAZER@ATPROPERTIES.COM

CHICAGO ASSOCIATION OF REALTOR'S TOP 1%

@PROPERTIES #1 SOUTH LOOP BROKER

— THE —  
**BRUCE GLAZER**  
— GROUP —

