

1945 WASHINGTON AVENUE
WILMETTE





ROOM DIMENSIONS

LIVING : 25' × 13'
 DINING : 12' × 12'
 KITCHEN : 24' × 13'
 FAMILY ROOM : 14' × 11'
 EATING AREA : 11' × 11'
 BASEMENT REC.ROOM : 25' × 13'
 PRIMARY BEDROOM : 16' × 13'
 2ND BEDROOM : 14' × 13'
 3RD BEDROOM : 12' × 11'
 4TH BEDROOM : 14' × 12'
 MUD ROOM : 8' × 6'

QUINTESSENTIAL WILMETTE HOME

A timeless classic home elegantly appointed with casual living for today's buyer. The ultimate entertainer's open floorplan concept with architectural additions in 2003 and 2007. The entrance to the home draws you to a large living room with cathedral ceilings, leading to a well-appointed dining room adjacent to the first-floor home office or bedroom. Entertain guests in the magnificent family room with vaulted ceilings and natural light that opens to the kitchen with a built-in breakfast nook. The first floor is finished off with the perfect in-law ensuite bedroom. Stunning architectural features and woodwork take you to the second floor with a large primary suite with a spacious luxurious spa-like bath. Another large bedroom with a hall bath completes the second floor. The finished lower level is ready to enjoy with an abundance of storage and a large laundry room. The most attractive fenced-in rear yard with space for a serene garden and patio plus 2 car garage.

- Roof 2020
- Kitchen & Family Room 2003
- Basement & Primary Bath 2007
- Firebox & Chimney Liner 2021

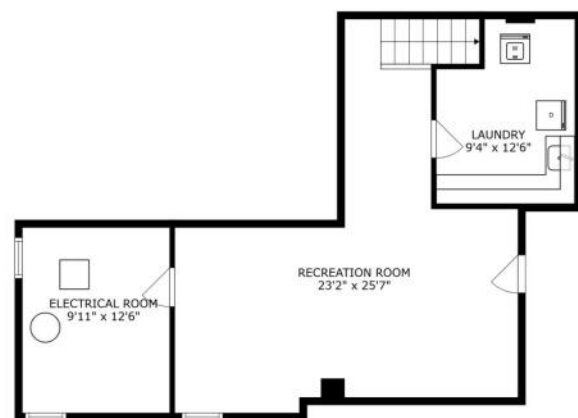
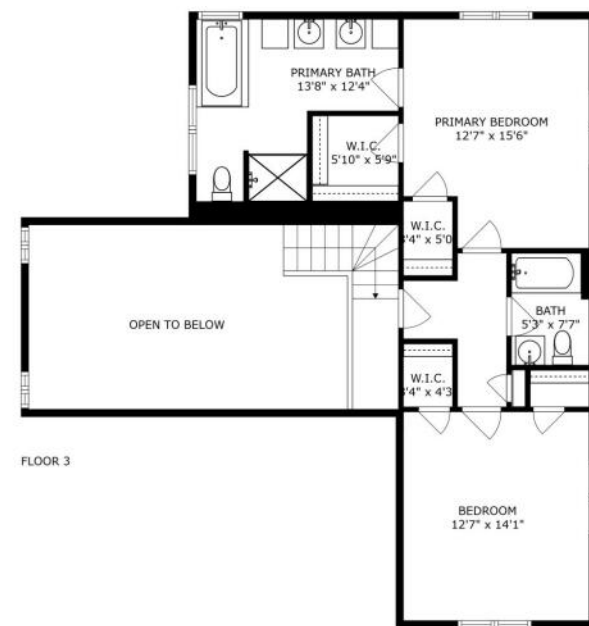


4 BEDROOM
 3.1 BATH
 TAXES: 14,506.81









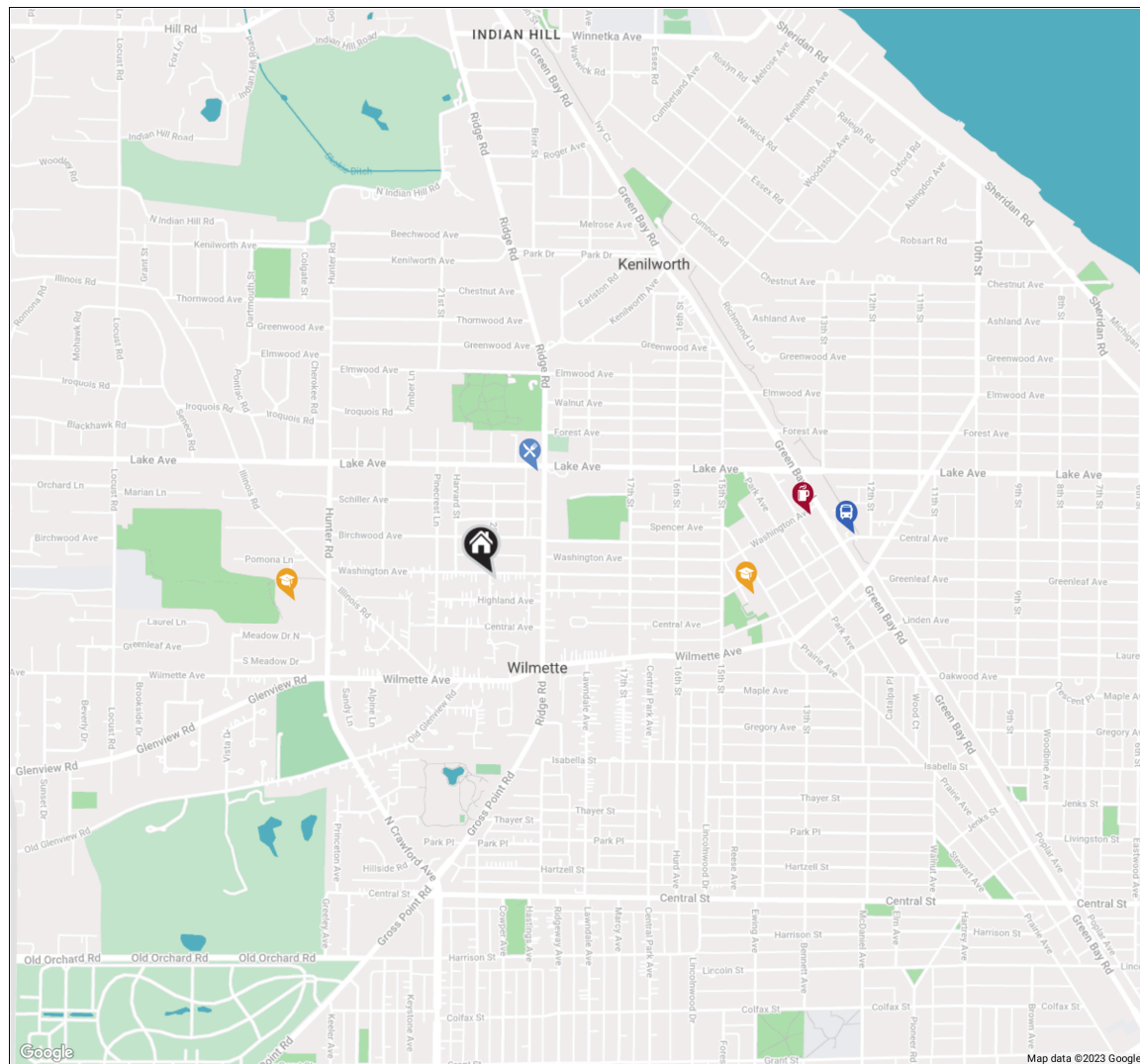


RANKED BY *CHICAGO* MAGAZINE AS ONE OF THE CHICAGO AREA'S BEST PLACES TO LIVE, **WILMETTE** IS A VIBRANT TOWN WITH A WEALTH OF AMENITIES.

When it comes to housing, there's no shortage of architectural styles and price points in this lakefront community. Quintessential Cape Cod, Victorian, and Colonial homes line the village's historic streets, many of which are paved with clay-fired bricks from the 1800s. In addition to single-family homes, there are beachfront condominiums and townhomes. While well-kept homes maintain Wilmette's rich architectural history in all of its glory, new construction attests to the village's enduring popularity.

Residents also have access to nationally recognized New Trier High School, located in Winnetka.

Wilmette's Metra station and access to I-94 make commuting to downtown Chicago a breeze, but there's plenty of reasons to stay local. At the heart of town is the Village Center, where you'll find specialty stores, restaurants, and the Wilmette Theatre. Along Sheridan Road there is Plaza del Lago, providing more shops and services to locals. Meanwhile, ample recreational activities are available at Gillson Park and beach, Wilmette Harbor, and the Centennial Recreation Complex, which includes swimming, tennis, and ice skating.

[illegible]

Ridgeview Grill
827 RIDGE ROAD, 0.3 MI



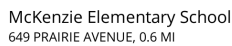
Starbucks
739 GREEN BAY RD, 0.8 MI



Highcrest Middle School
569 HUNTER ROAD, 0.5 MI



Wilmette Metra Station
722 GREEN BAY RD, 0.8 MI





KEKI CANNON

312.860.3390

847-881-0200

KEKI@ATPROPERTIES.COM

WWW.KEKICANNON.COM

keki
CANNON



CHRISTIE'S
INTERNATIONAL REAL ESTATE

1945WASHINGTON.INFO