



1960 N LINCOLN PARK #3010
LINCOLN PARK

@properties®

CHRISTIE'S
INTERNATIONAL REAL ESTATE



ROOM DIMENSIONS

LIVING ROOM : 17' × 21'

KITCHEN : 11' × 10'

PRIMARY BEDROOM : 11' × 15'

1 BEDROOM

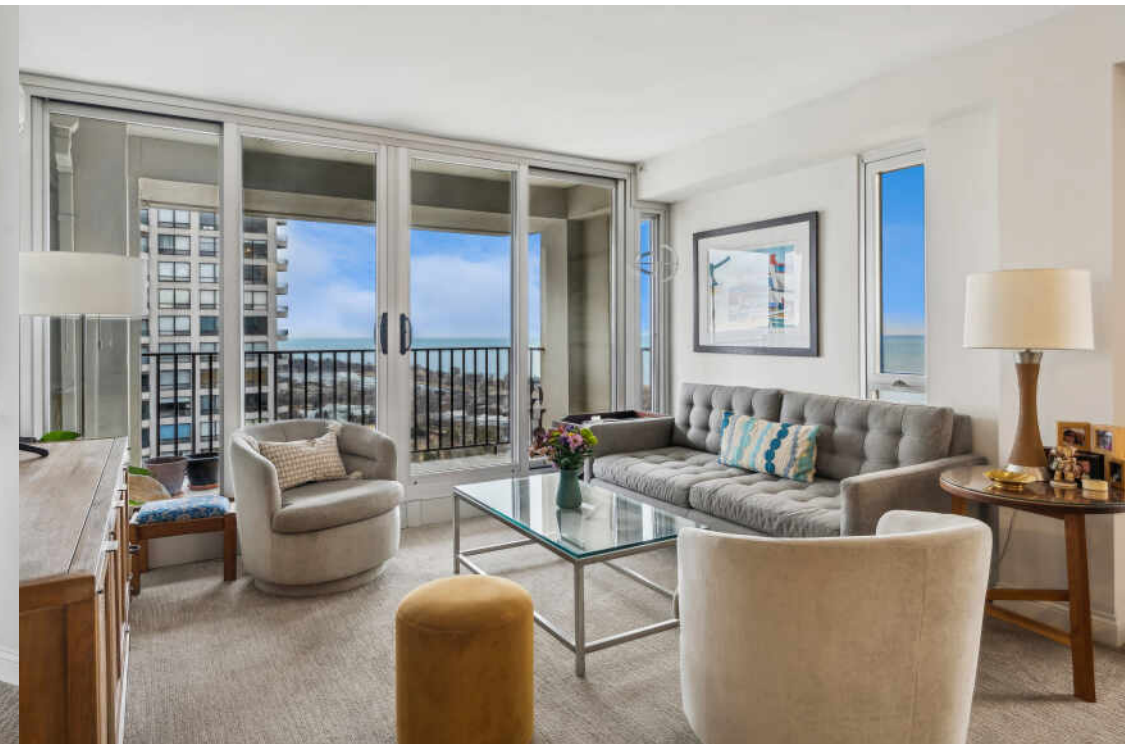
1 BATH

TAXES: \$6,170

ASSESSMENTS: \$936 / MONTH

1960 N. LINCOLN PARK WEST #3010

Stunning EAST/LAKE AND PARK VIEWS! Welcome to 1960 N. Lincoln Park W. a highly coveted "10" tier corner unit boasting spectacular N/E views and a spacious layout. This upgraded 1-bedroom + office area includes an oversized recessed balcony perfect for grilling or soaking in the sunrise over Lake Michigan. This home has been thoughtfully enhanced with double-opening sliding balcony doors in both the living room and bedroom. The updated open kitchen is a chef's dream and has been completely renovated in the last 2 years. Cook with a view of the lake and Lincoln Park with the rare east-facing window in the kitchen! The living/dining area is generously sized with three large east-facing windows and space to accommodate furniture and a dining table. The primary bedroom comfortably fits a king-size bed with room for other furniture as well. It features an extra window for added natural light and a Juliet balcony with sliders. The bathroom has been recently remodeled completing the home with a modern touch. Building amenities include: A gorgeous outdoor pool, plaza, gardens, and water feature. An upgraded workout room, new hallways, and a stunning lobby renovation. A new roof with an expanded rooftop deck and party room (2020). 24/7 door staff, professional on-site management, maintenance, receiving room, and dry cleaner. App-enabled rooftop laundry facilities for ultimate convenience. Located across from Lincoln Park Zoo, Nature Boardwalk, North Ave Beach, and the running/biking trails, you'll also enjoy easy access to dining, shopping, and entertainment. Public transit options (151, 22, 36, 156, 73) and Divvy bike stations are steps away. Investor-friendly, pet-friendly (no weight limits), and well-maintained with no special assessments planned or pending. Assessments include heat, cable, high-speed internet, cooking gas, water, garbage/recycling, reserves, and common area WiFi. This is an incredible opportunity to live your dream lifestyle in one of Lincoln Park's most desirable locations.





SIZES AND DIMENSIONS ARE APPROXIMATE, ACTUAL MAY VARY.



LINCOLN PARK RESIDENTS HAVE IT ALL – FROM THE ARTS TO ITS FAMED ZOO – RIGHT IN THEIR BACKYARD.

The neighborhood includes quiet tree-lined residential blocks, DePaul University, and two major museums in addition to the Lincoln Park Zoo, one of the country's oldest zoos. There's also a wide array of entertainment, eateries, and hotspots.

An evening in Lincoln Park might include seeing a play at the acclaimed Steppenwolf Theatre and dining at a Michelin-rated restaurant or a quaint neighborhood café. Sports fans will find as many dive bars with the game on as foodies will find fine-dining restaurants with al-fresco seating.

Lincoln Park is just as delightful by day. Residents are close to the lakefront and North Avenue Beach, parks, farmers markets, festivals, and countless shops, ranging from upscale boutiques on Armitage to larger retailers at the Clybourn Corridor.

Housing stock ranges from smaller townhomes and vintage condominiums to rehabs and new construction. Buyers around DePaul University can find loft condominiums in converted factories and warehouses. On its eastern edge, Lincoln Park features beautiful vintage brownstones along with high-rises with breathtaking views of the lake, park, North Pond Nature Sanctuary, and city skyline.

Located just two miles from downtown, Lincoln Park offers residents a quick commute to work. Public transportation abounds, with the CTA's Brown and Red lines serving the neighborhood in addition to several bus routes and Lake Shore Drive.



NOTES



JONATHON SPRADLING

312.682.8500

JSPRADLING@ATPROPERTIES.COM

WWW.CHICAGOLUXELIVING.COM



JASON M ROBERTS

3125133344

3126828500

JMROBERTS@ATPROPERTIES.COM

WWW.CHICAGOLUXELIVING.COM