

1962 W LAWRENCE AVENUE #201
RAVENSWOOD/LINCOLN SQUARE





ROOM DIMENSIONS

LIVING ROOM : 18' × 13'

DINING ROOM : 11' × 8'

KITCHEN : 14' × 11'

PRIMARY BEDROOM : 14' × 11'

FOYER : 13' × 4'

PATIO/DECK : 14' × 8'

SUN-DRENCHED ONE-BEDROOM OASIS

Experience the perfect blend of space and style in the heart of Chicago's vibrant Ravenswood/Lincoln Square neighborhood. Situated in an intimate elevator building, this spacious, renovated one-bedroom condo offers quiet western exposures and soaring extra-tall ceilings. The generous entry foyer, featuring a large guest closet, leads into a bright, open floor plan anchored by gleaming hardwood floors. The oversized kitchen is a chef's delight, boasting 42" white cabinetry with new hardware, granite countertops, and a suite of newer stainless-steel appliances (Refrigerator 2025, Range 2024, Microwave 2022). The living area is bathed in natural light through a wall of windows, offering ample room for a large sectional and a natural flow for entertaining. Retreat to the primary sun-filled bedroom which easily accommodates a king-sized bed and features a wall of closets. The stunning 2025 bathroom renovation includes a deep soaking tub, modern neutral tiling, and an oversized vanity for maximum storage. Enjoy the large private patio located directly off the kitchen/dining area-perfect for morning coffee or evening guests. For your convenience, an in-unit washer/dryer, massive additional storage room, and a parking space in a secured gated area are included. This location is steps from Lincoln Square's iconic dining and shopping, grocery stores, the Brown Line and Metra stations.

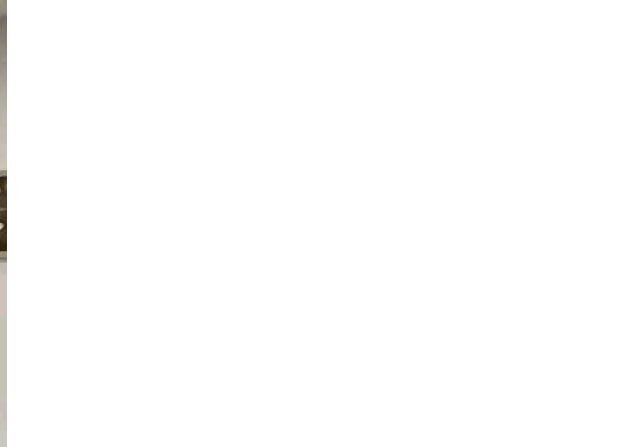
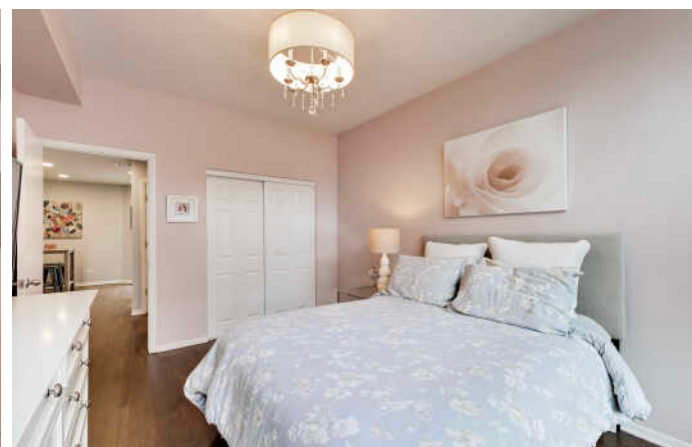
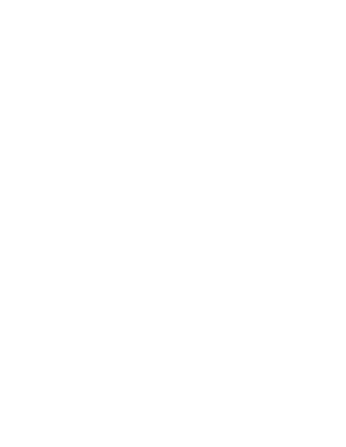
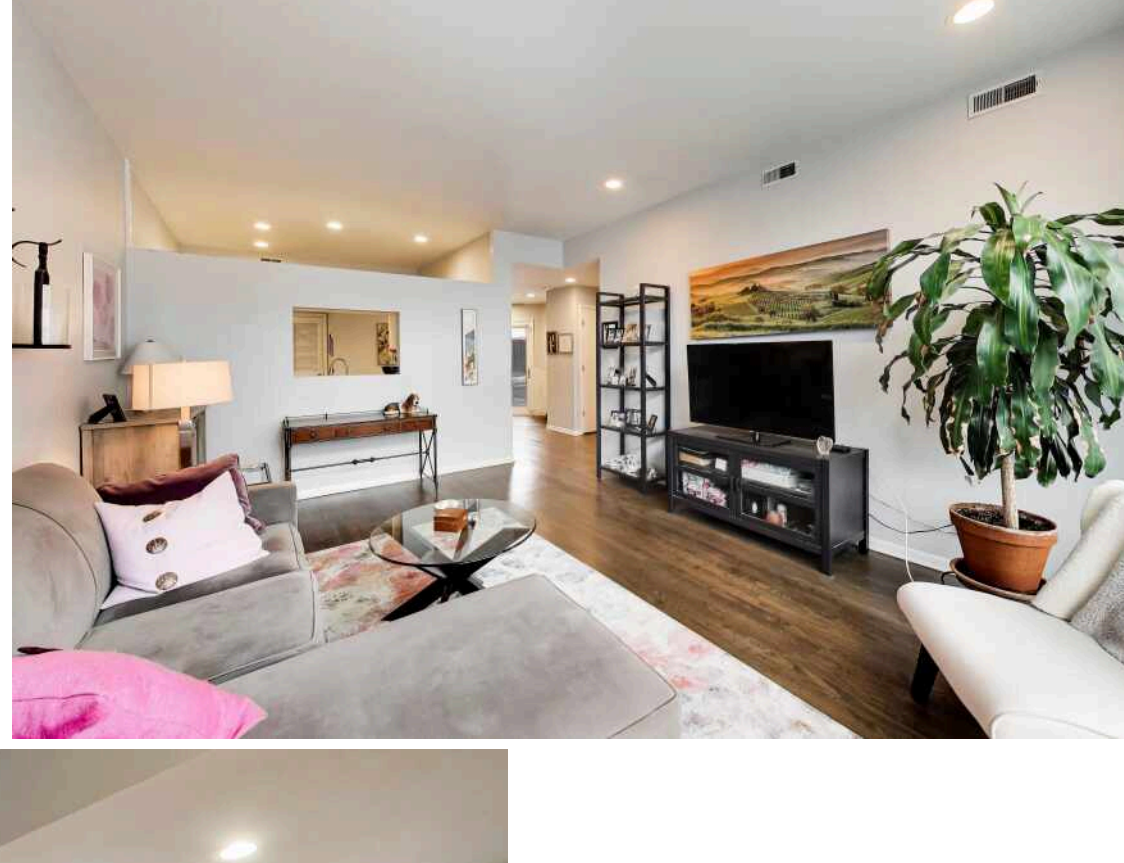


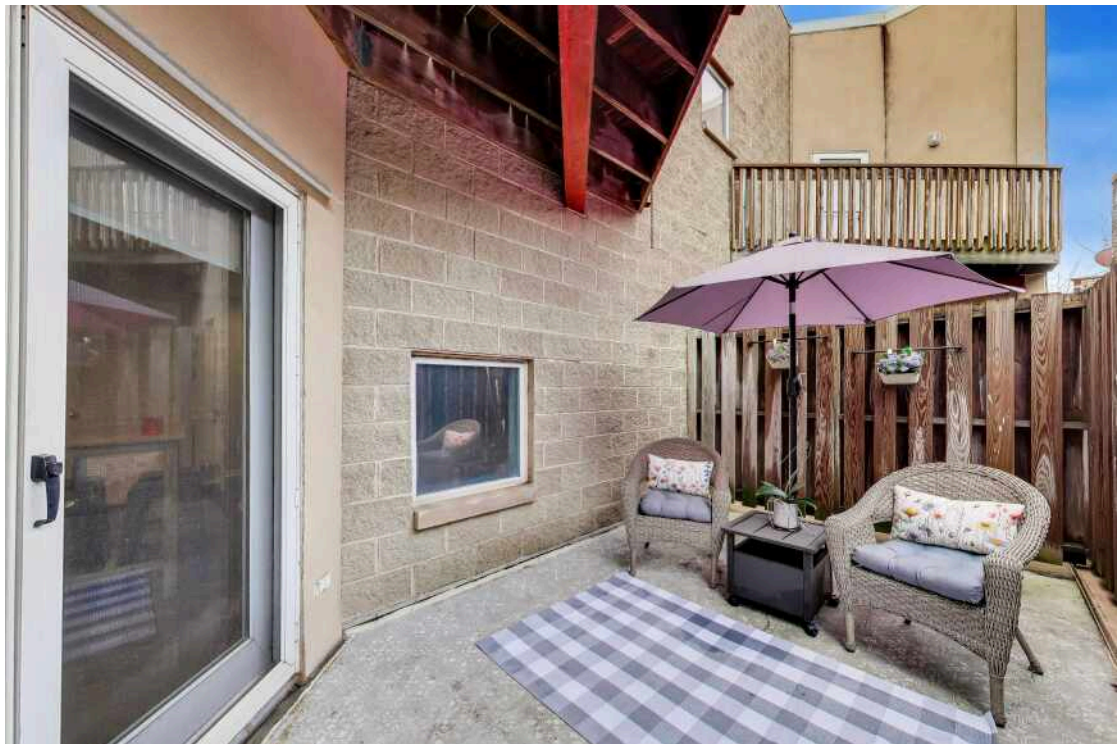
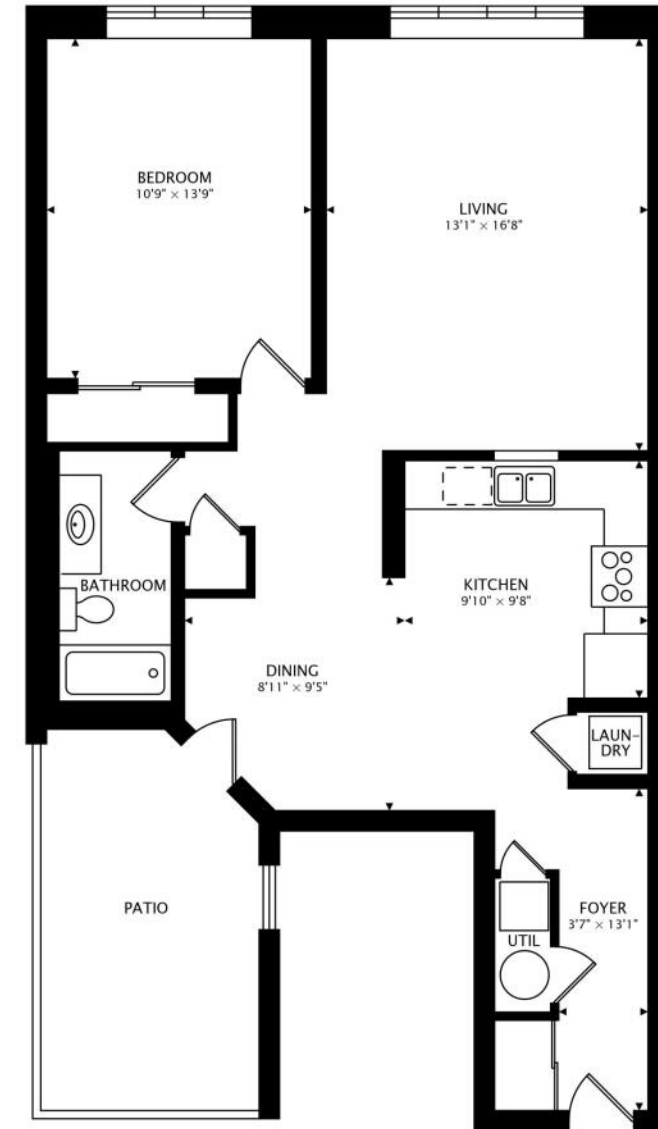
1 BEDROOM

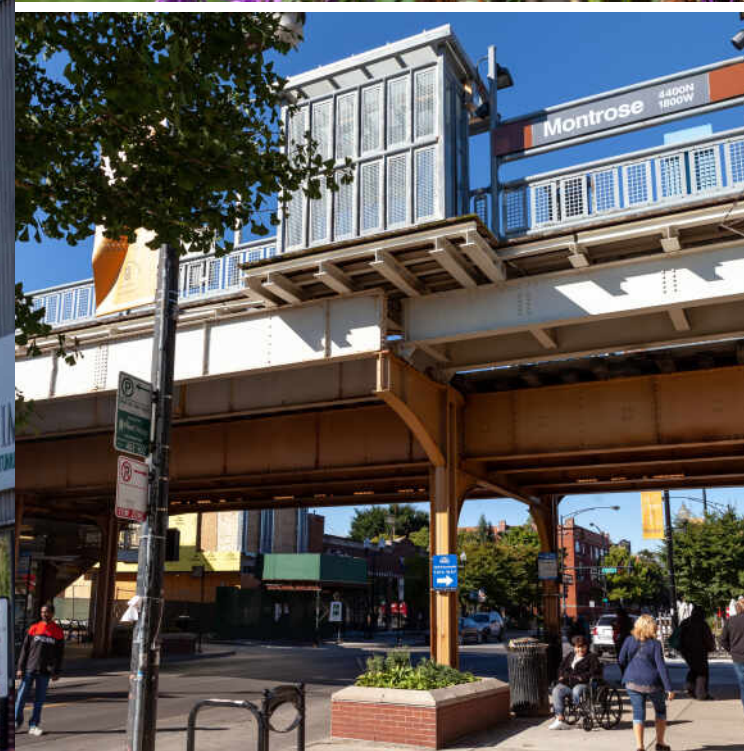
1 BATH

TAXES: \$3,993

ASSESSMENTS: \$246 / MONTH







RAVENSWOOD DEFIES DEFINITION.

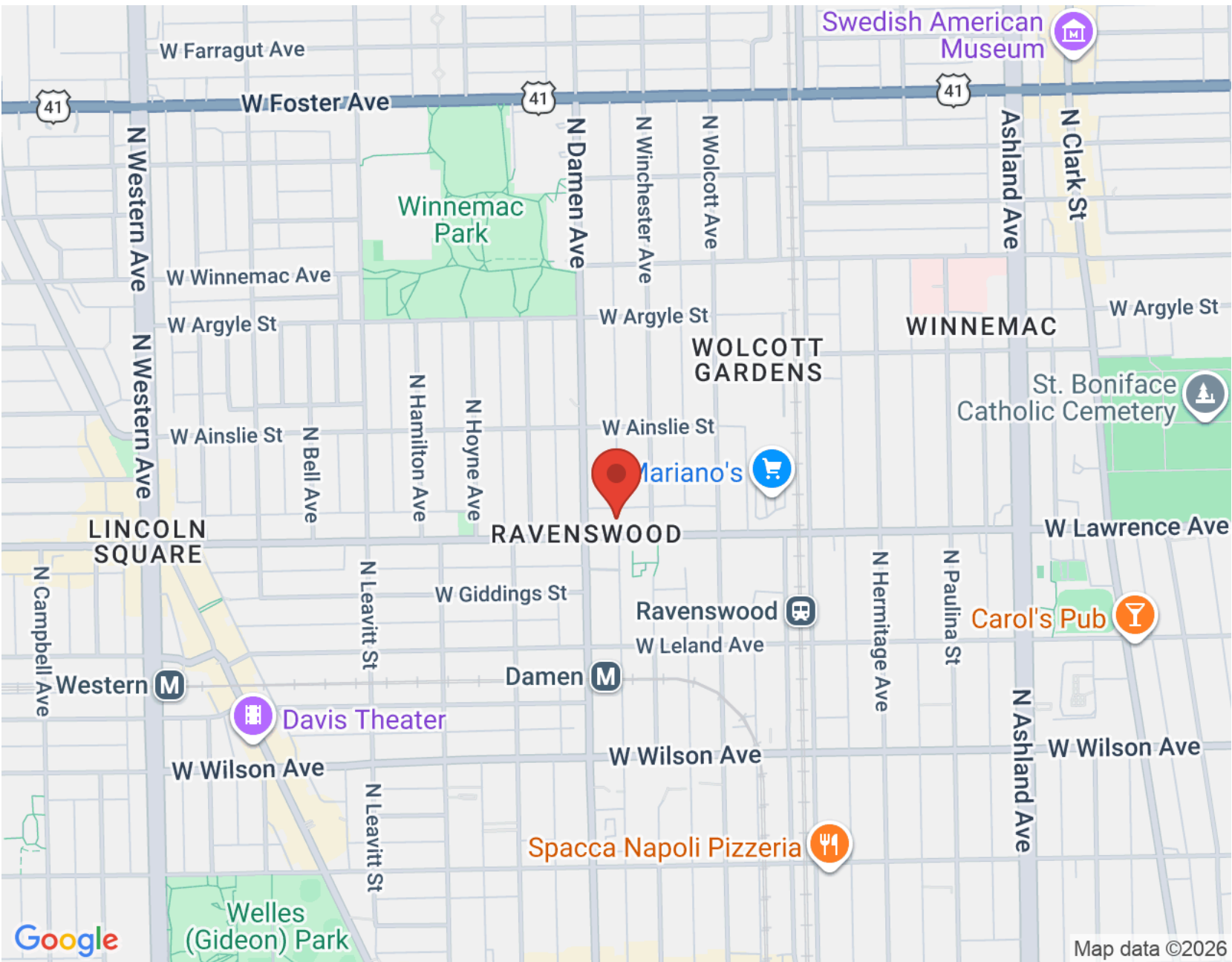
Although nearby neighborhoods may claim it as their own, the North Side neighborhood has its own unique feel.

Bordered by Foster Avenue, Montrose Avenue, Clark Street, and the Chicago River, the wooded area was home to ravens when real estate speculators saw its potential as an exclusive commuter suburb. The neighborhood became that and so much more after it was annexed to the City of Chicago in 1889.

The community has also established itself as a creative hub. Once its machine shops moved on and factories shuttered, artists moved in. Today, artists of all kinds thrive in the neighborhood - from microbrewers and distillers to furniture makers, metalworkers, and performers. The community is home to an architectural artifact salvage firm that occupies a warehouse from the early 1900s, and a wedding and event venue that is housed in a former factory with sweeping windows.

When it comes to housing, Ravenswood features spacious lots on tree-lined streets. Homes include courtyard buildings, Victorian and Prairie School homes, brick row houses, two- and three-flats, single-family homes, lofts, and condominiums. Many homes have been rehabbed to add modern amenities while retaining their vintage charm.

As early developers imagined, the neighborhood's convenient location just 10 miles from downtown makes it a popular choice for commuters. Public transportation includes multiple CTA bus routes, nearby CTA Brown Line stops, and the Ravenswood Metra station. Various local events also make Ravenswood a destination for residents of surrounding communities. Each year the community hosts Taste of Ravenswood, Ravenswood ArtWalk, and Ravenswood On Tap, featuring live music and craft beer.



NOTES _____



JEANINE MCSHEA

548 W WEBSTER
CHICAGO, IL 60614
(312) 446-9957
JMCSHEA@ATPROPERTIES.COM



ERIN MCSHEA

548 W WEBSTER
CHICAGO, IL 60614
(312) 404-9627
EMCSHEA@ATPROPERTIES.COM

