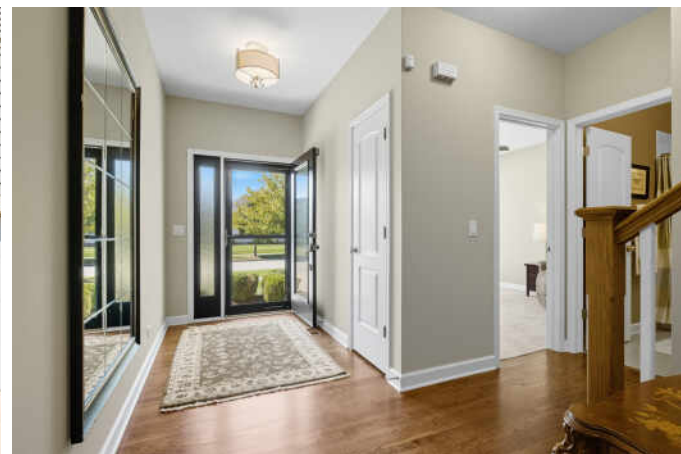


1N607 GOLF VIEW LANE  
WINFIELD





#### ROOM DIMENSIONS

LIVING ROOM : 18' × 15'

DINING ROOM : 13' × 11'

KITCHEN : 11' × 23'

PRIMARY BEDROOM : 16' × 13'

SECOND BEDROOM : 15' × 16'

THIRD BEDROOM : 12' × 12'

FOURTH BEDROOM : 13' × 10'

FOUR SEASON ROOM : 14' × 9'

FOYER : 19' × 6'

1ST FLOOR LAUNDRY : 9' × 6'

## 1N607 GOLF LANE - A REFINED LIFESTYLE...

Maintenance free first floor living at its finest. This turn-key custom Airhart built home is light and bright and has been meticulously maintained inside and out! Enjoy over 2,350 sqft of above-grade living space in this four bedroom, three bath home that features beautiful hardwood floors, 9-foot ceilings and open concept living. Gourmet Kitchen is a cook/entertainer's dream and features a double oven, 42" custom maple cabinets, granite counters, a large center island with counter seating, and a wraparound breakfast/working counter that opens to a deck surrounded by beautiful and private landscaping. Spacious living room opens to a four-season enclosed porch with vaulted ceiling. Escape to the spacious first floor primary bedroom with its ensuite bathroom and walk-in closet. Rounding out the first floor is an additional bedroom/office, a full bath, and laundry. The second floor includes two bedrooms and a full bath, and the deep-pour full basement is ready to provide nearly 1,600 sqft of additional living space and storage. Additional features of the home include a back-up generator and an exterior sprinkler system. Extra deep extended 2 car garage provides additional space and storage. The coveted Fisher Farms neighborhood is conveniently located and features award-winning Wheaton Schools, Western Trail Prairie Path, Klein Creek Golf Course, Central DuPage Hospital, and the vibrant downtowns of Wheaton and Winfield with metro trains, restaurants, and shopping. Welcome home!

4 BEDROOM

3 BATH

TAXES: \$13,752

ASSESSMENTS: \$225 / MONTH





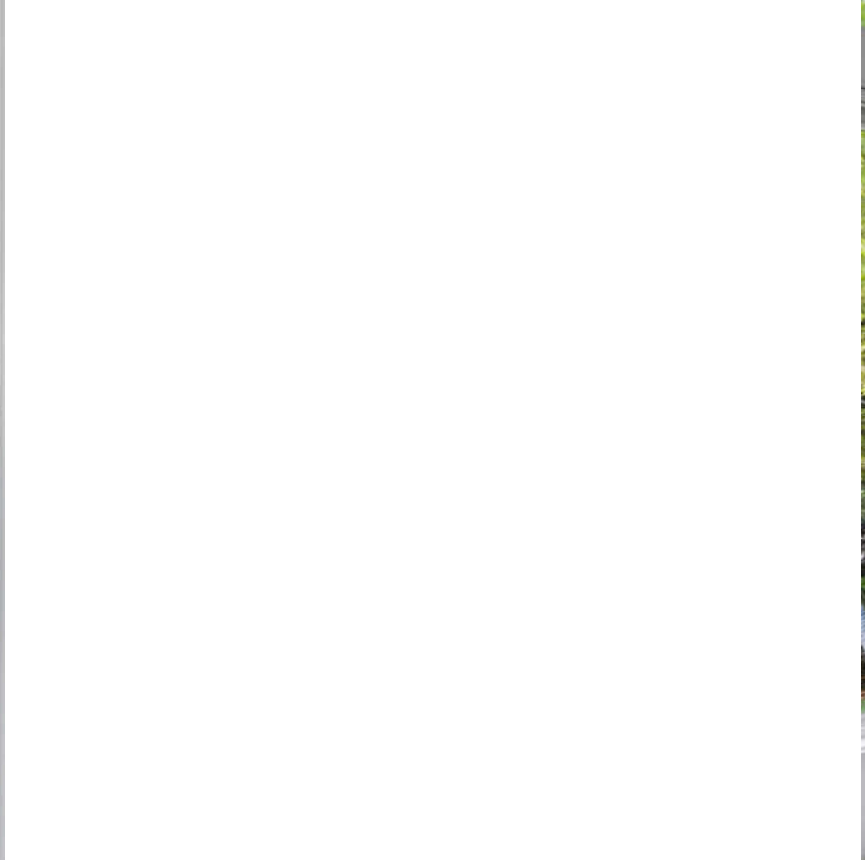




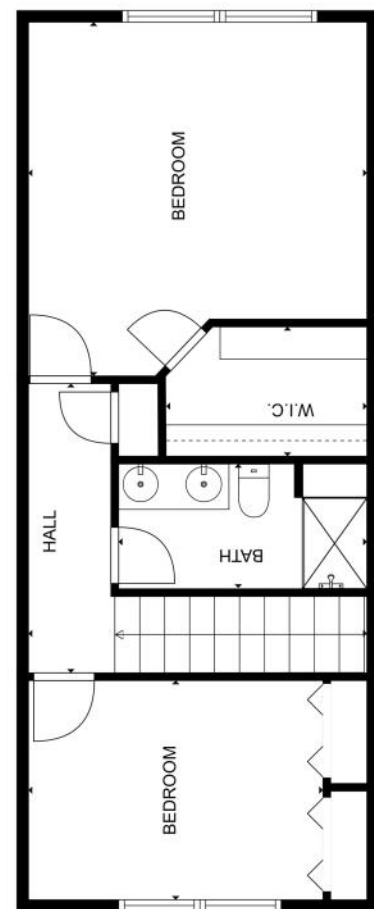
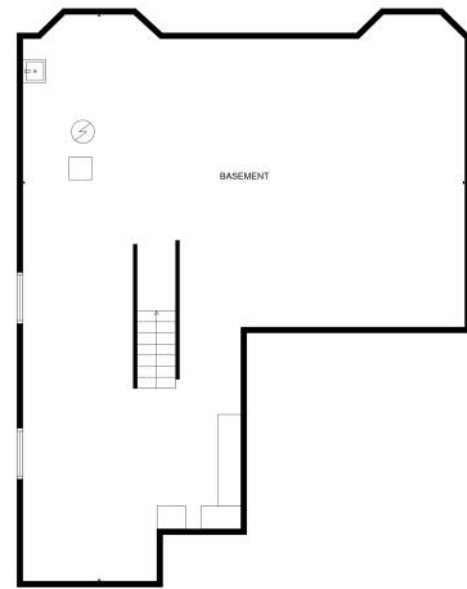
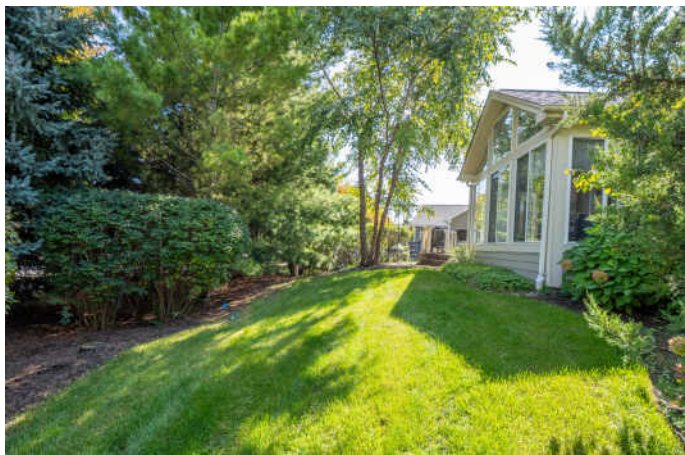


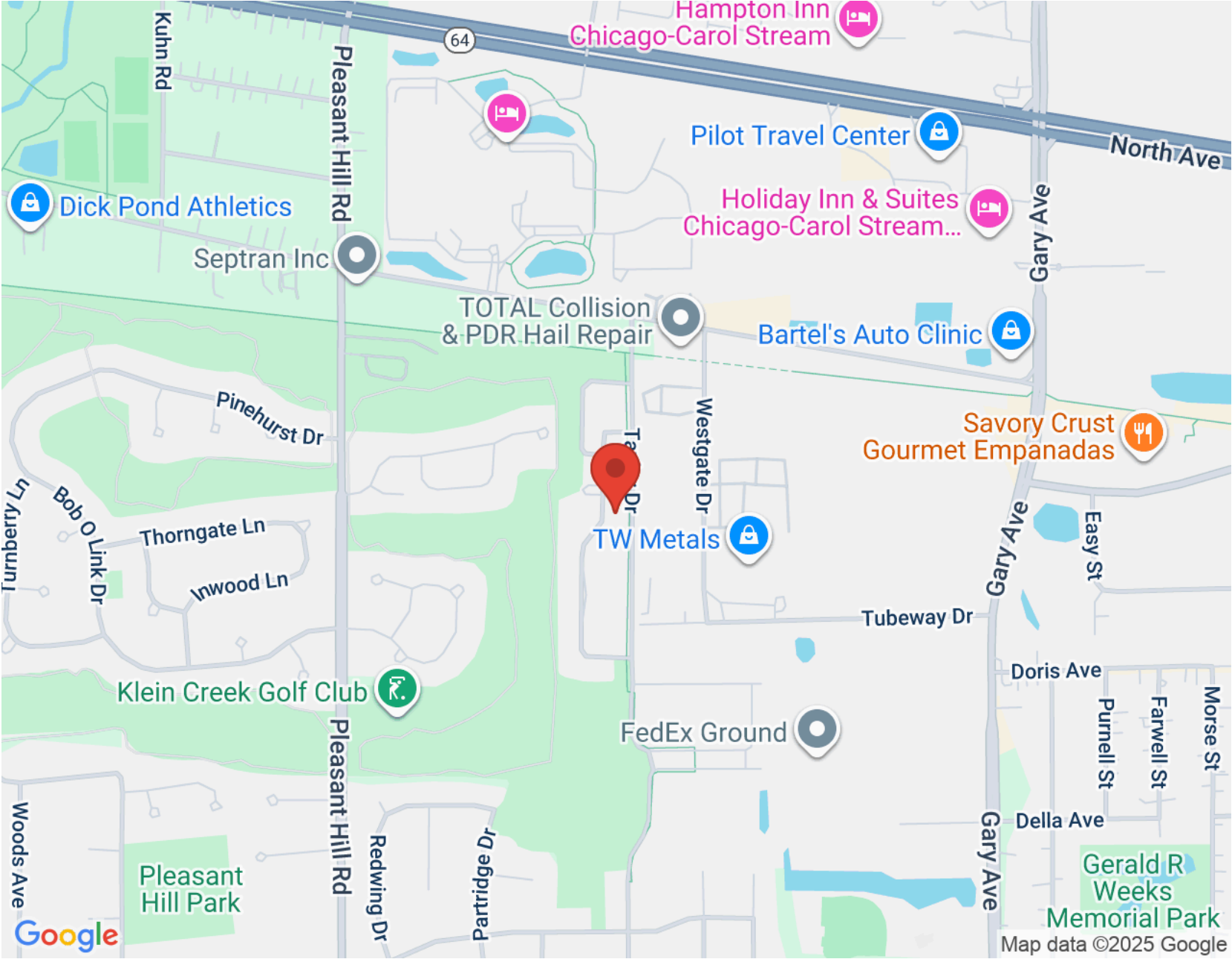












NOTES \_\_\_\_\_

\_\_\_\_\_

\_\_\_\_\_

\_\_\_\_\_

\_\_\_\_\_

\_\_\_\_\_

\_\_\_\_\_

\_\_\_\_\_

\_\_\_\_\_

\_\_\_\_\_

\_\_\_\_\_





## MARK PLUNKETT

BROKER | IAHSP | CLHMS

(630) 514-5000

MARK@PLUNKETTHOMES.COM

"LIFE IS A JOURNEY THAT IS HOMEWARD BOUND"