

1 BLOOMINGDALE PLACE #502

BLOOMINGDALE





ROOM DIMENSIONS

LIVING ROOM : 15' x 16'

DINING AREA : 8' x 8'

KITCHEN : 9' x 8'

PRIMARY BEDROOM : 12' x 20'

SECOND BEDROOM : 11' x 12'

BALCONY : 15' x 6'

LAUNDRY : 3' x 5'

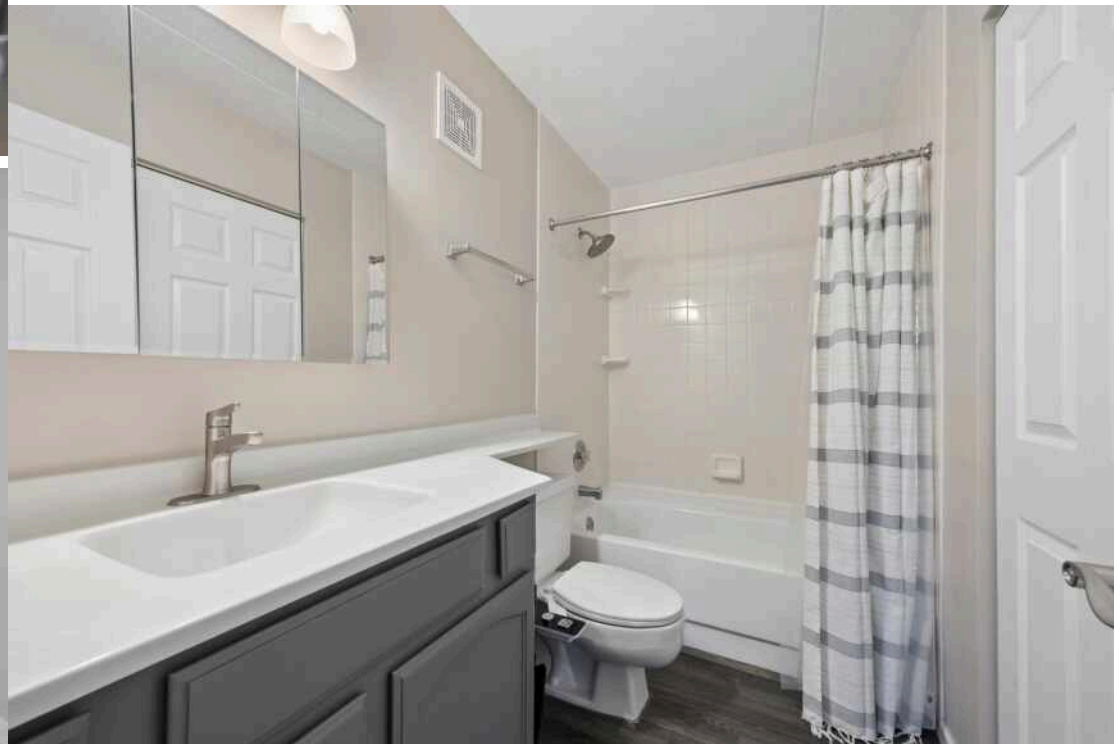
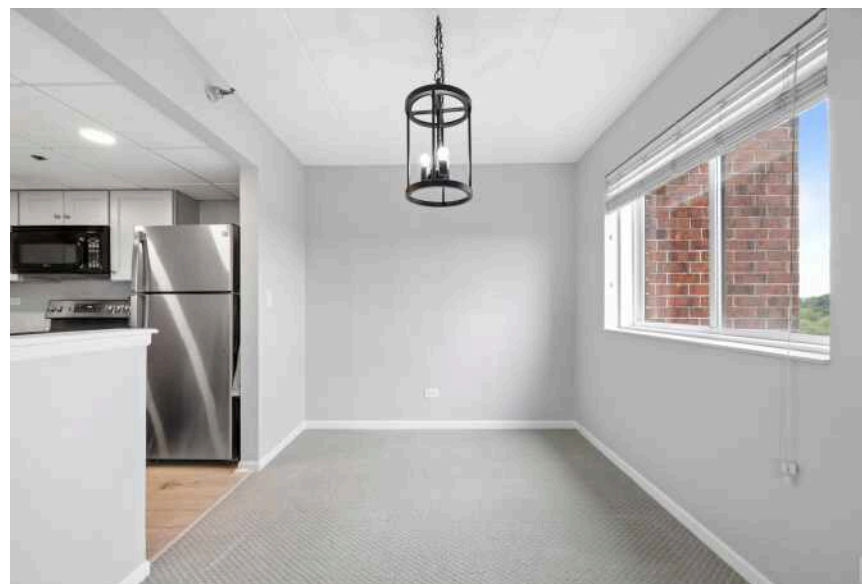
2 BEDROOM

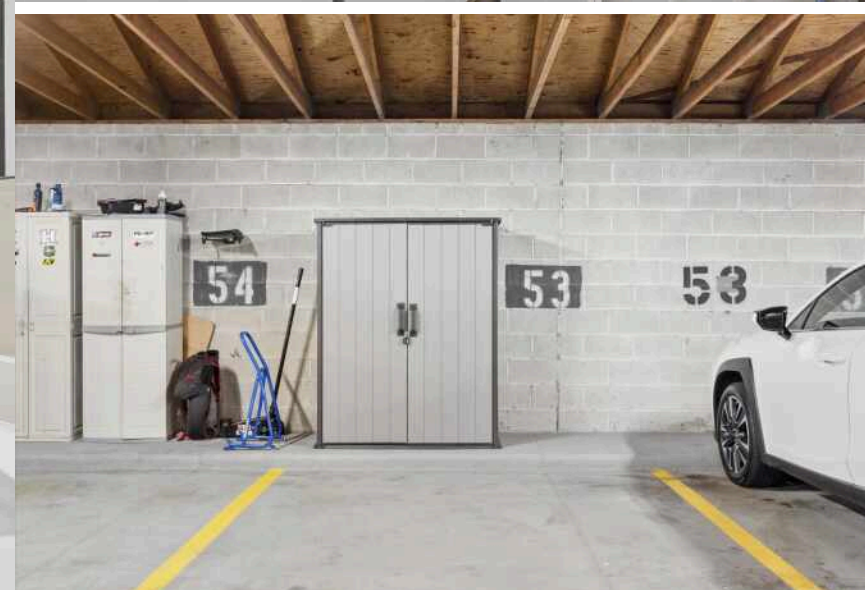
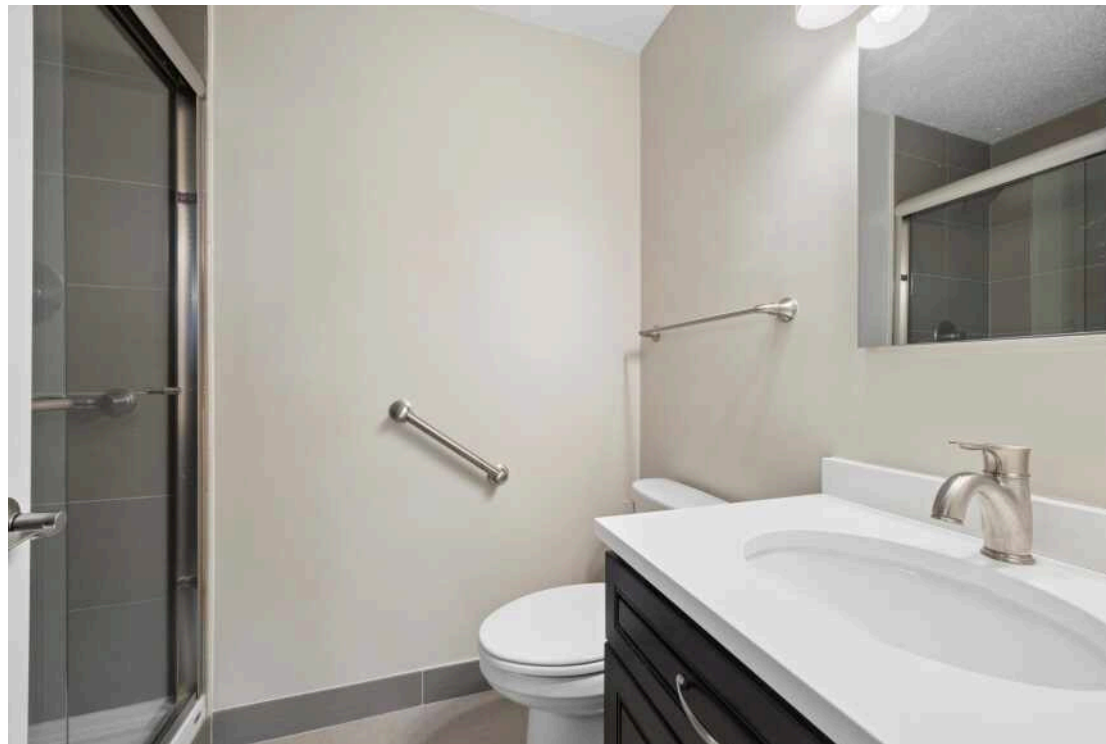
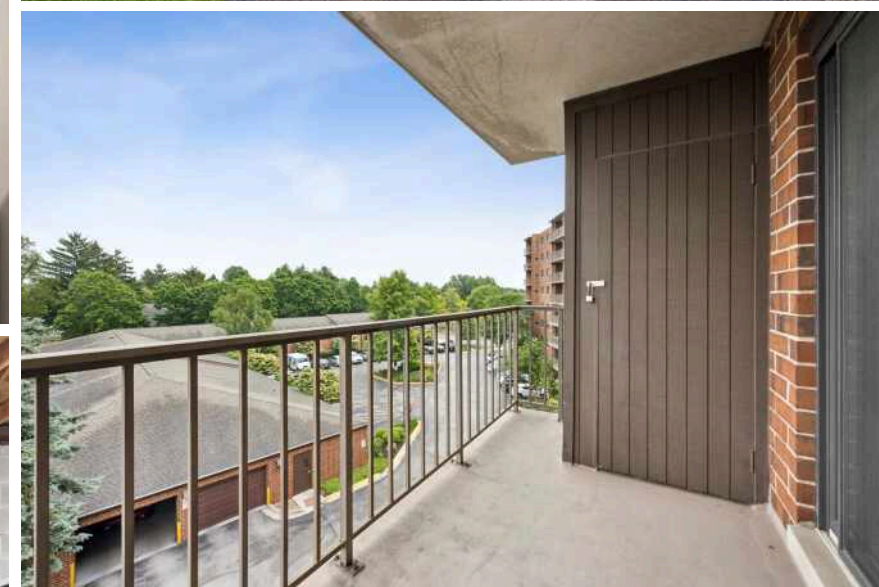
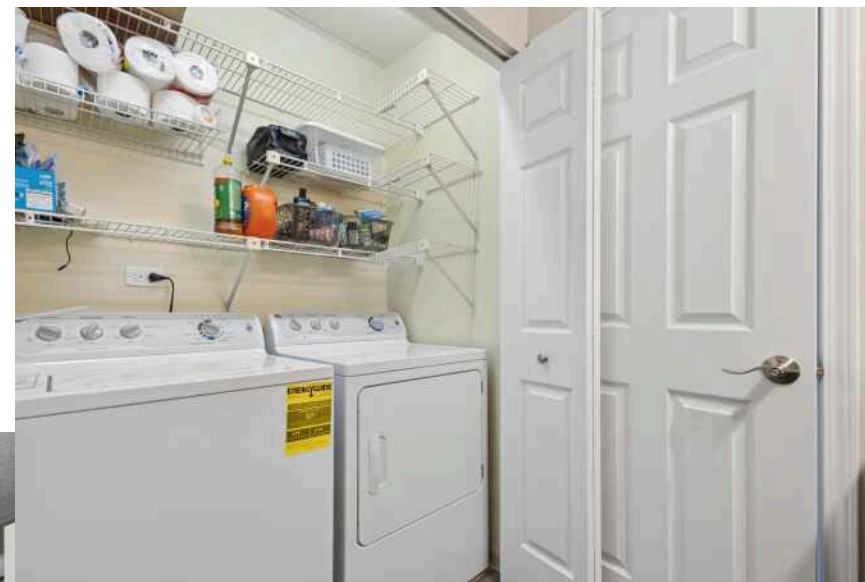
2 BATH

TAXES: \$4211.86

ASSESSMENTS: \$461

Welcome home to effortless living in the heart of Bloomingdale! This beautifully maintained 2-bedroom, 2-bath condo offers a desirable 5th-floor location with western exposure, providing stunning sunset views and abundant natural light. Ideally situated just steps from Springfield Park and Nature Area and minutes from highly rated District 13 schools, this home combines comfort, convenience, and lifestyle. Step inside the impressive lobby and be greeted by a striking saltwater aquarium that sets the tone for this unique residence. The updated kitchen features elegant quartz countertops and brand-new luxury vinyl flooring (2024), while the spacious living room opens to a private balcony-perfect for relaxing summer evenings and grilling. The oversized primary suite boasts an updated ensuite bath and generous closet space, while the second bedroom is conveniently located next to a full guest bathroom. Additional highlights include newer carpeting, fresh paint throughout, updated hardware, in-unit washer and dryer, and a heated garage parking space (#53). Residents enjoy an impressive array of amenities, including an indoor pool, whirlpool, sauna, fully equipped fitness center, party room, and game room. A move-in-ready home offering comfort, style, and resort-style amenities in an unbeatable location!





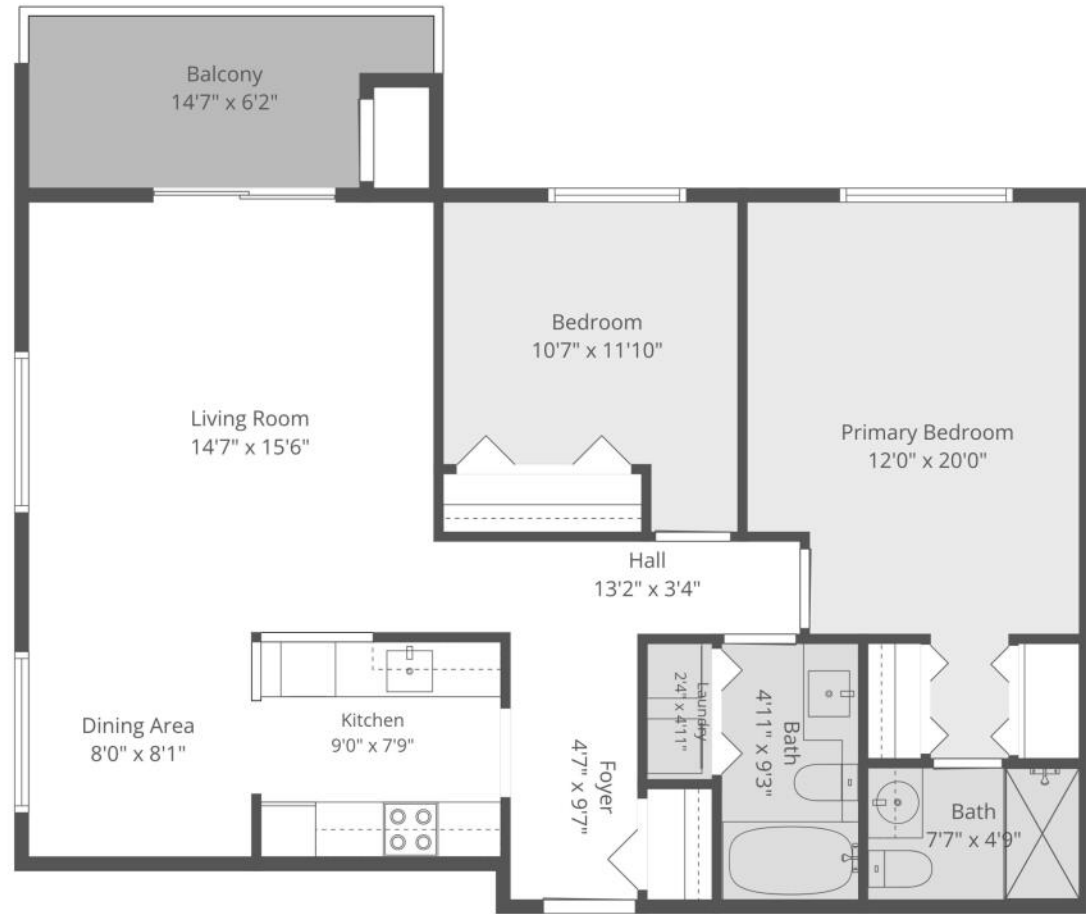


ONCE A STOP FOR STAGECOACHES AND WESTWARD TRAVELERS, **BLOOMINGDALE** WAS ONE OF THE OLDEST VILLAGES SETTLED IN DUPAGE COUNTY.

The Meacham family settled here in 1833 with a dozen more families to follow the next year. Travelers passed by the Chicago-Galena Highway, known today as Lake Street.

Old Town Bloomingdale includes several small business and shops in restored buildings from the area's original settlement as well as a museum featuring art exhibits in the village's oldest building.

Residents enjoy more than 160 acres of open space and 2,400 programs through the Bloomingdale Park District. Amenities include the Johnston Recreation Center, Oasis Water Park, and Westfield Walking Track.



Total: 930 sq. ft
 1st Floor: 930 sq. ft
 Excluded Areas: Balcony: 79 sq. Ft, Walls: 72 sq. ft

Measurements Are Highly Reliable But For Marketing Only. Produced By The Collective.





FRANCESCA CICCONE

(630) 674-9063

WWW.HOMESBYFRANCESCA.COM

FRANCESCA@ATPROPERTIES.COM

Homes by Francesca



@properties®

CHRISTIE'S
INTERNATIONAL REAL ESTATE