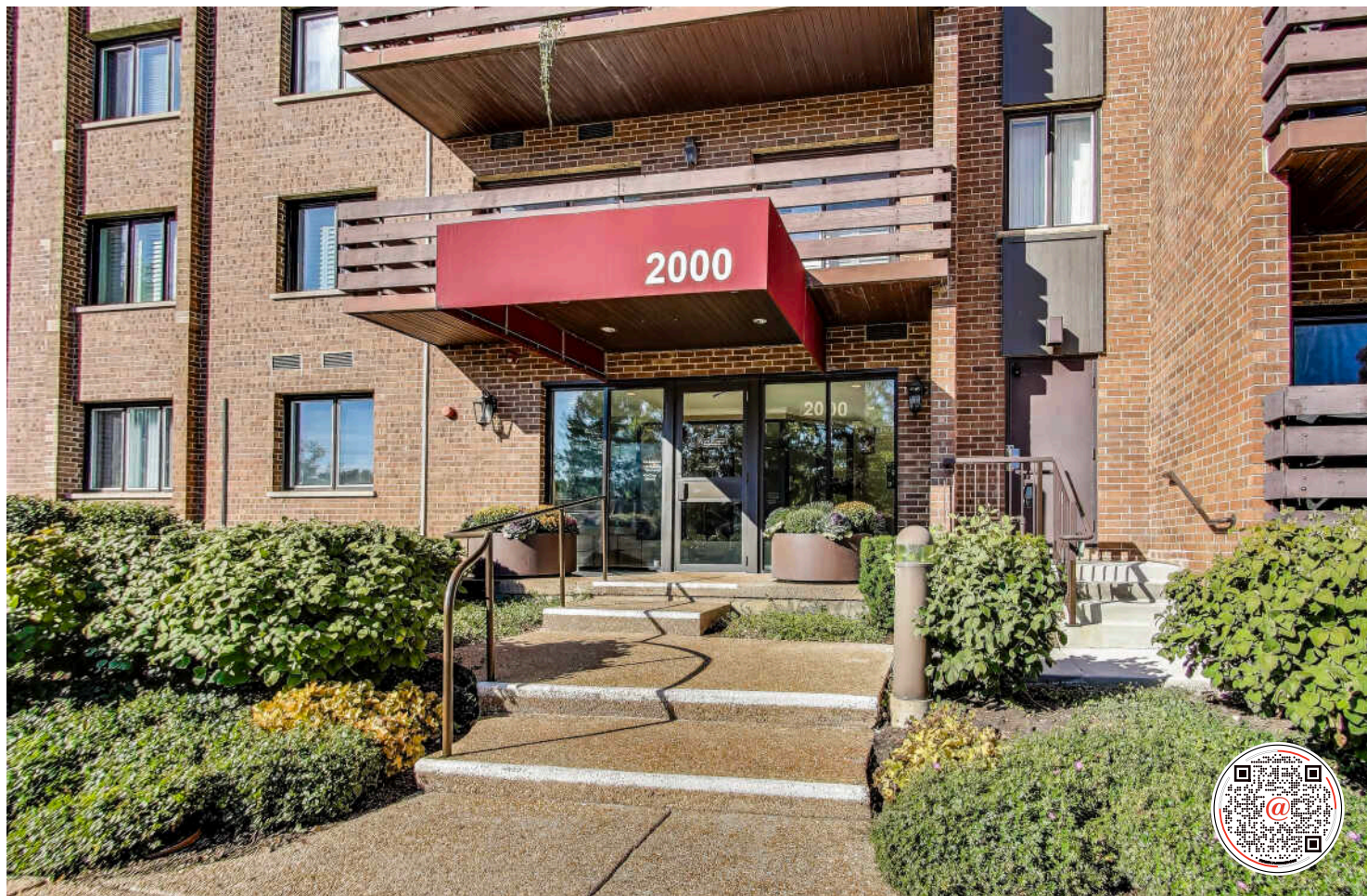


# 2000 CHESTNUT AVENUE #310

GLENVIEW







#### ROOM DIMENSIONS

KITCHEN : 17' × 9'

DINING ROOM : 18' × 11'

LIVING ROOM : 18' × 14'

PRIMARY BEDROOM : 19' × 13'

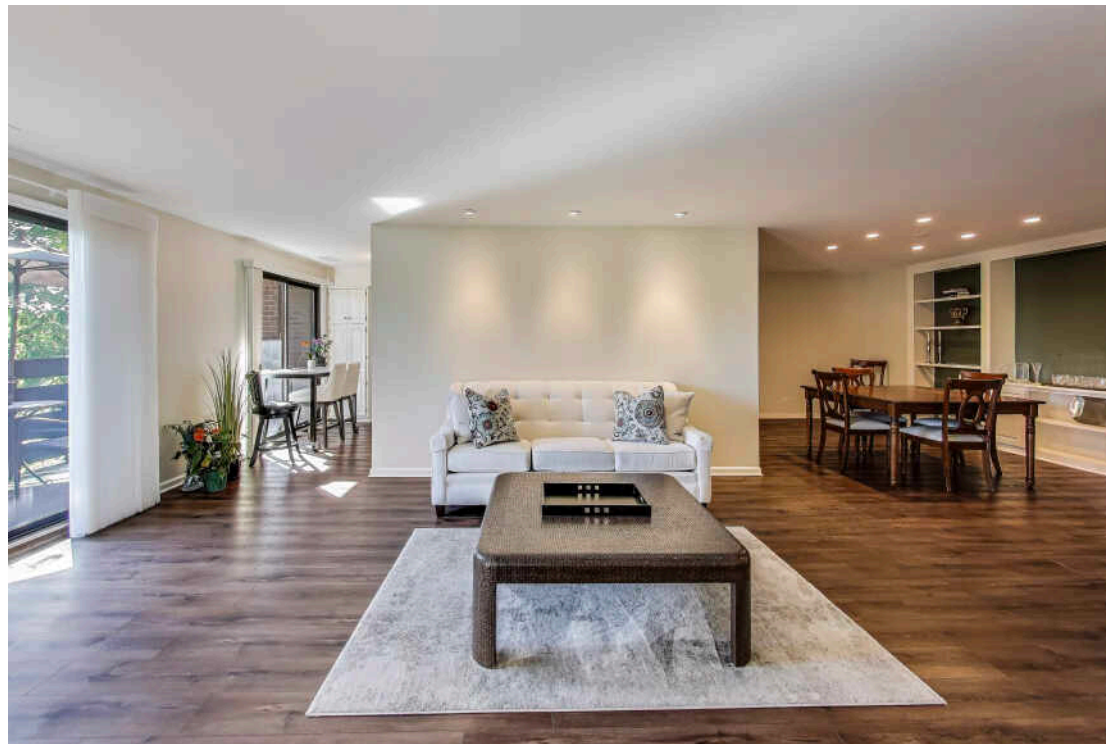
2ND BEDROOM : 14' × 11'

DEN/THIRD BEDROOM : 14' × 12'

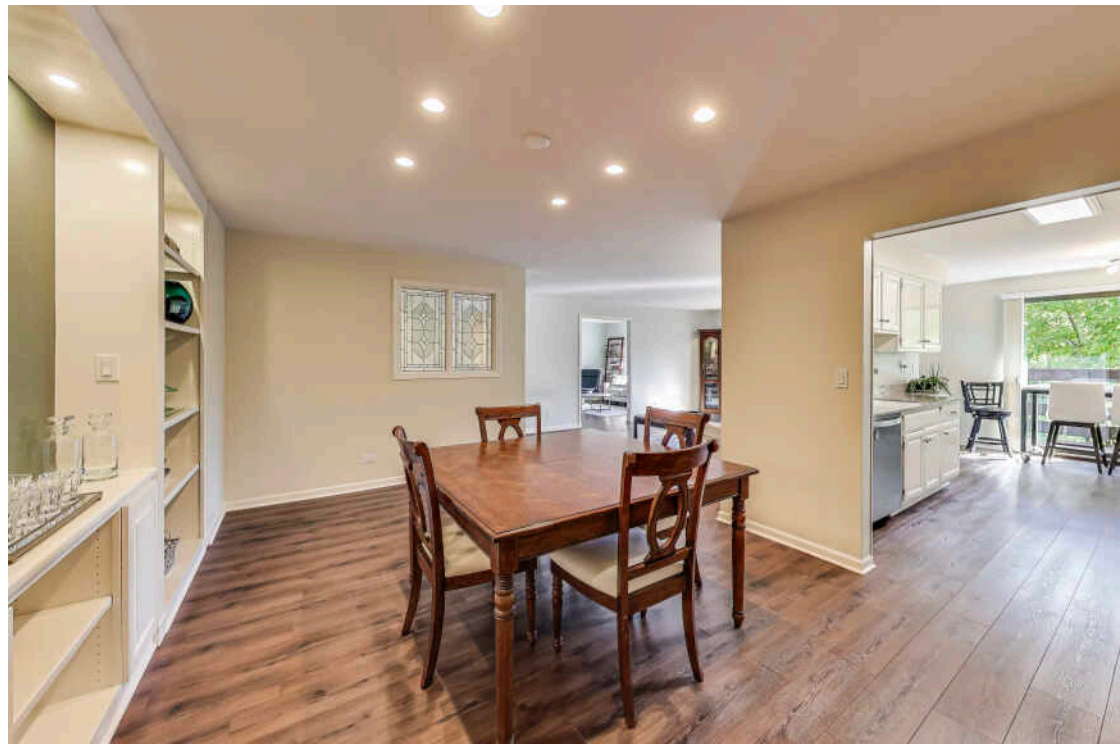
Welcome home to this beautifully updated corner condo in coveted Valley Lo Towers. This spacious 3-bedroom residence has been thoughtfully updated with timeless finishes and today's most desirable colors, creating a move-in-ready home that lives like a single-family residence. Gorgeous dark luxury vinyl plank floors flow throughout, complementing the open and sun-filled layout. A welcoming foyer leads into the formal living and dining areas, enhanced by custom built-ins and large sliding doors leading to your private balcony. The kitchen was reimagined with white cabinetry, granite countertops, stainless steel appliances, and an open design that connects seamlessly to the living room-providing an enhanced and perfect flow. The third bedroom has been opened up for use as a cozy den, adding flexibility to the floor plan. The generous primary suite features a walk-in closet and spa-like bath, while a second bedroom, additional full bath, and in-unit laundry round out the space. Same-floor storage and a heated garage space make life even more convenient. Valley Lo Towers residents enjoy exceptional amenities including a pool, and tennis courts, a fitness center, and a party/meeting room-all in an unbeatable location near The Glen Town Center, Gallery Park, and minutes from downtown Glenview and it's exciting redevelopment.

3 BEDROOM

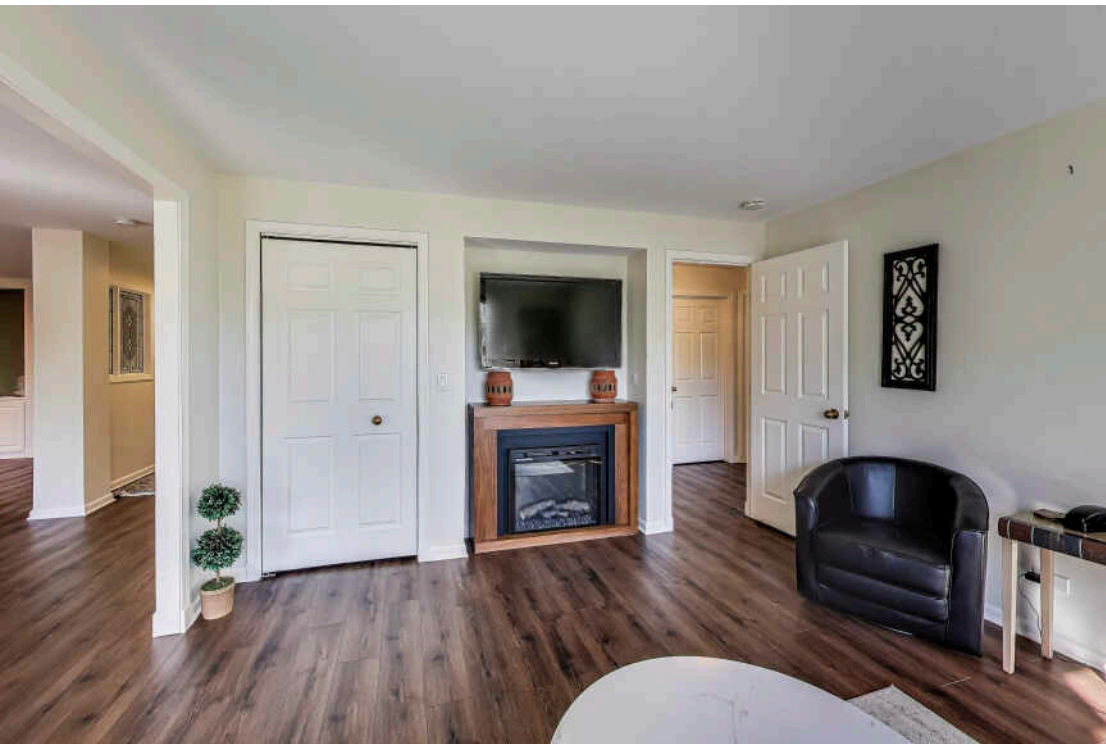
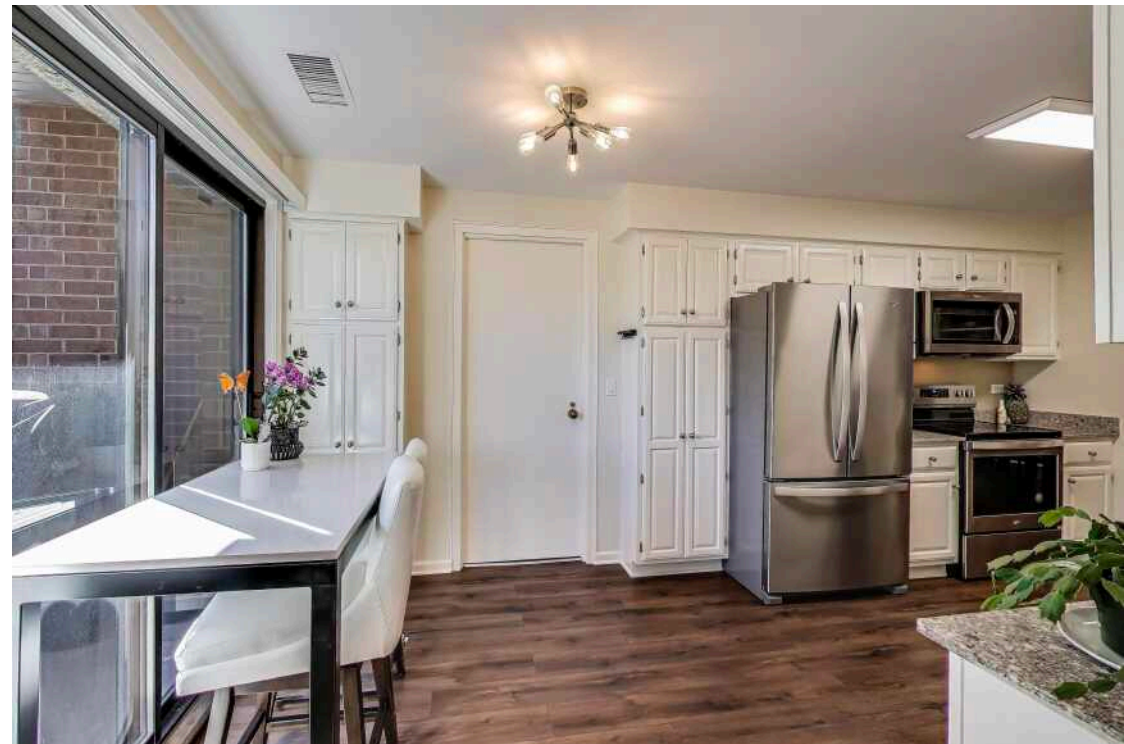
2 BATH



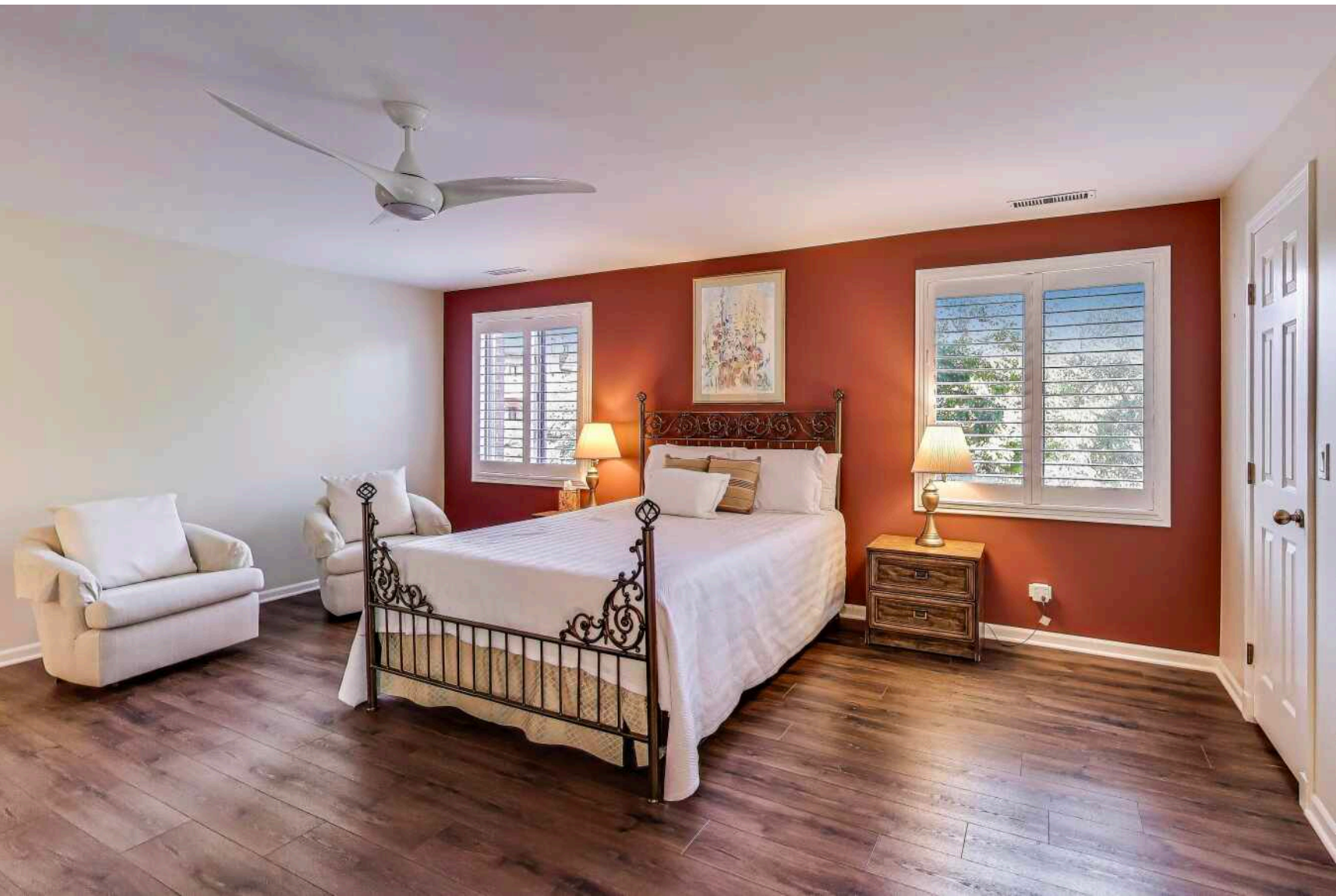




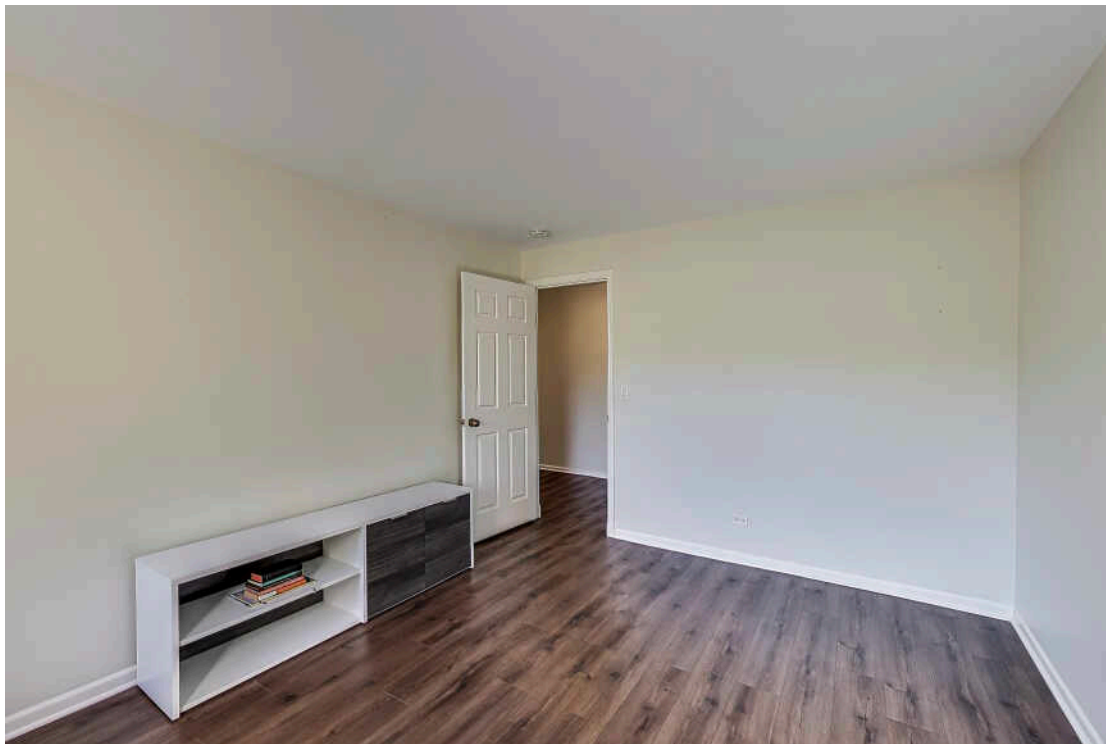




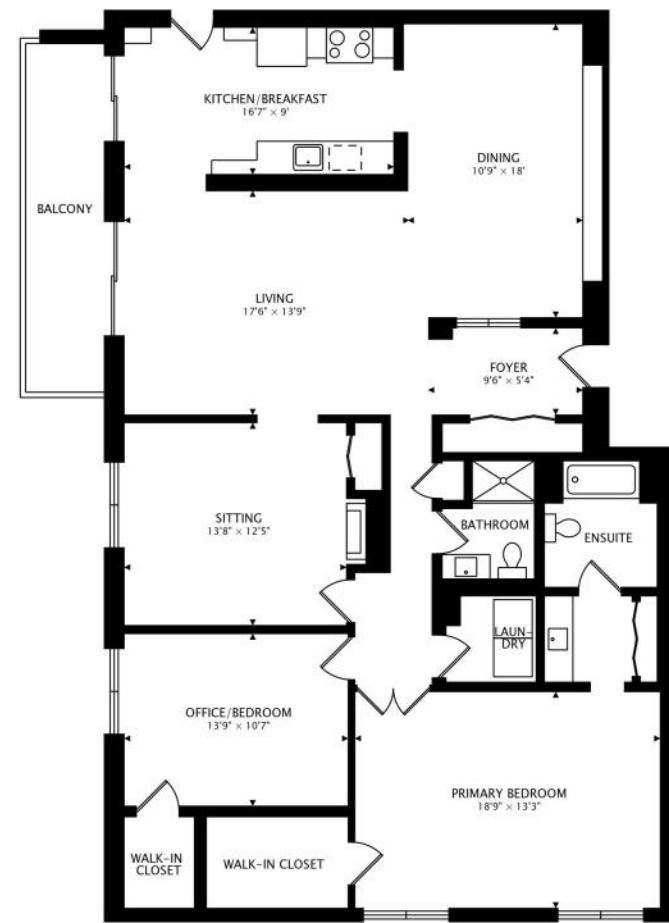






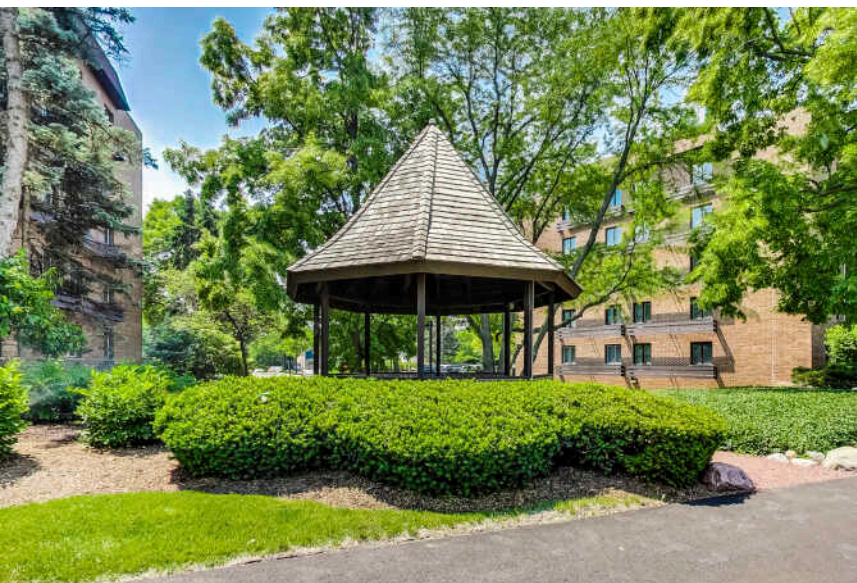






1816 sq ft + 103 sq ft BALCONY









## JULIE SCHULTZ

(847) 946-1946

JOBSCHULTZ@ATPROPERTIES.COM

WWW.ATPROPERTIES.COM/SITE/THE-JULIE-SCHULTZ-GROUP



## KATHY QUINN

8474775571

8478320002

KATHYQUINN@ATPROPERTIES.COM

WWW.ATPROPERTIES.COM/SITE/THE-JULIE-SCHULTZ-GROUP