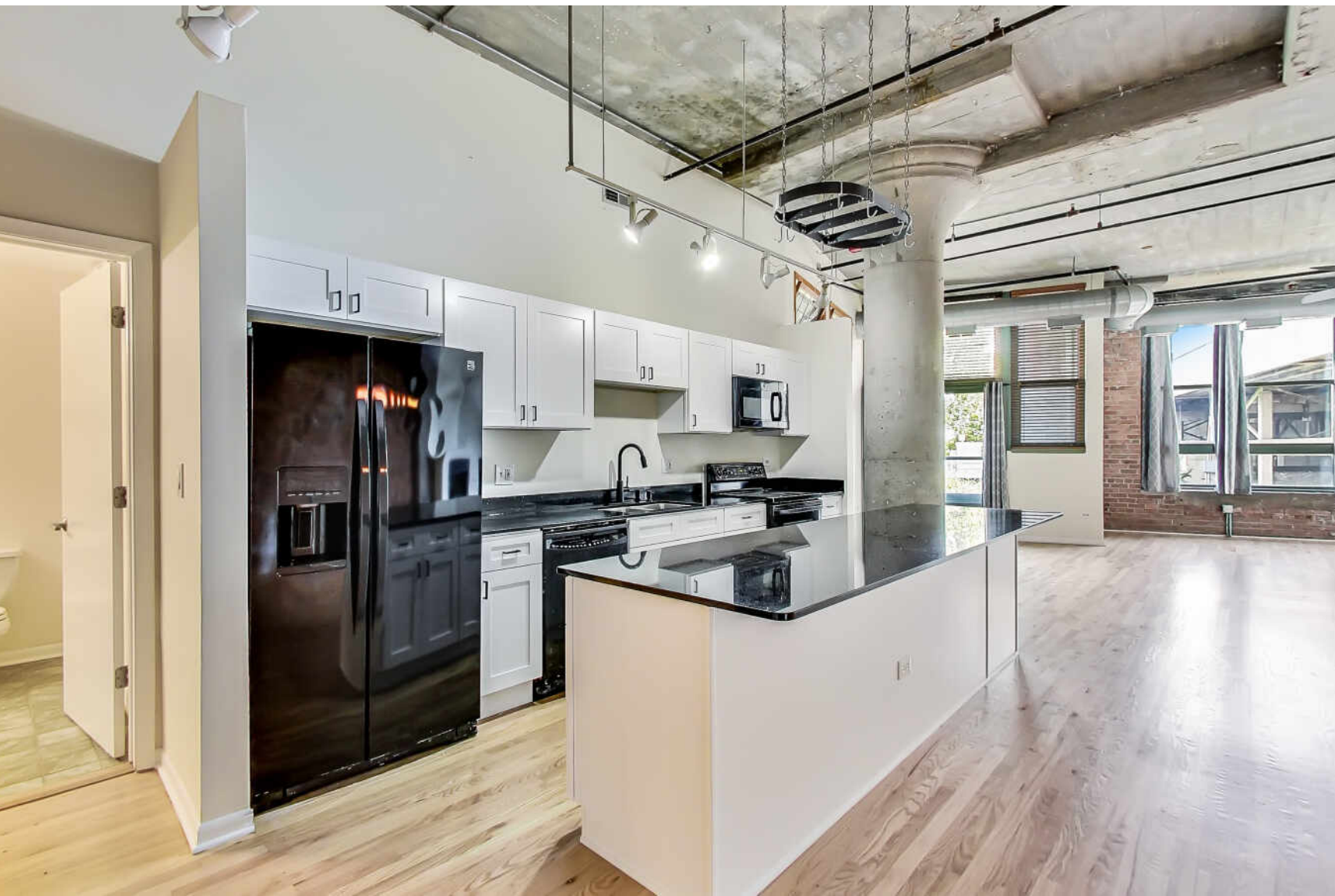


2001 S CALUMET AVENUE #207
PRAIRIE DISTRICT, SOUTH LOOP



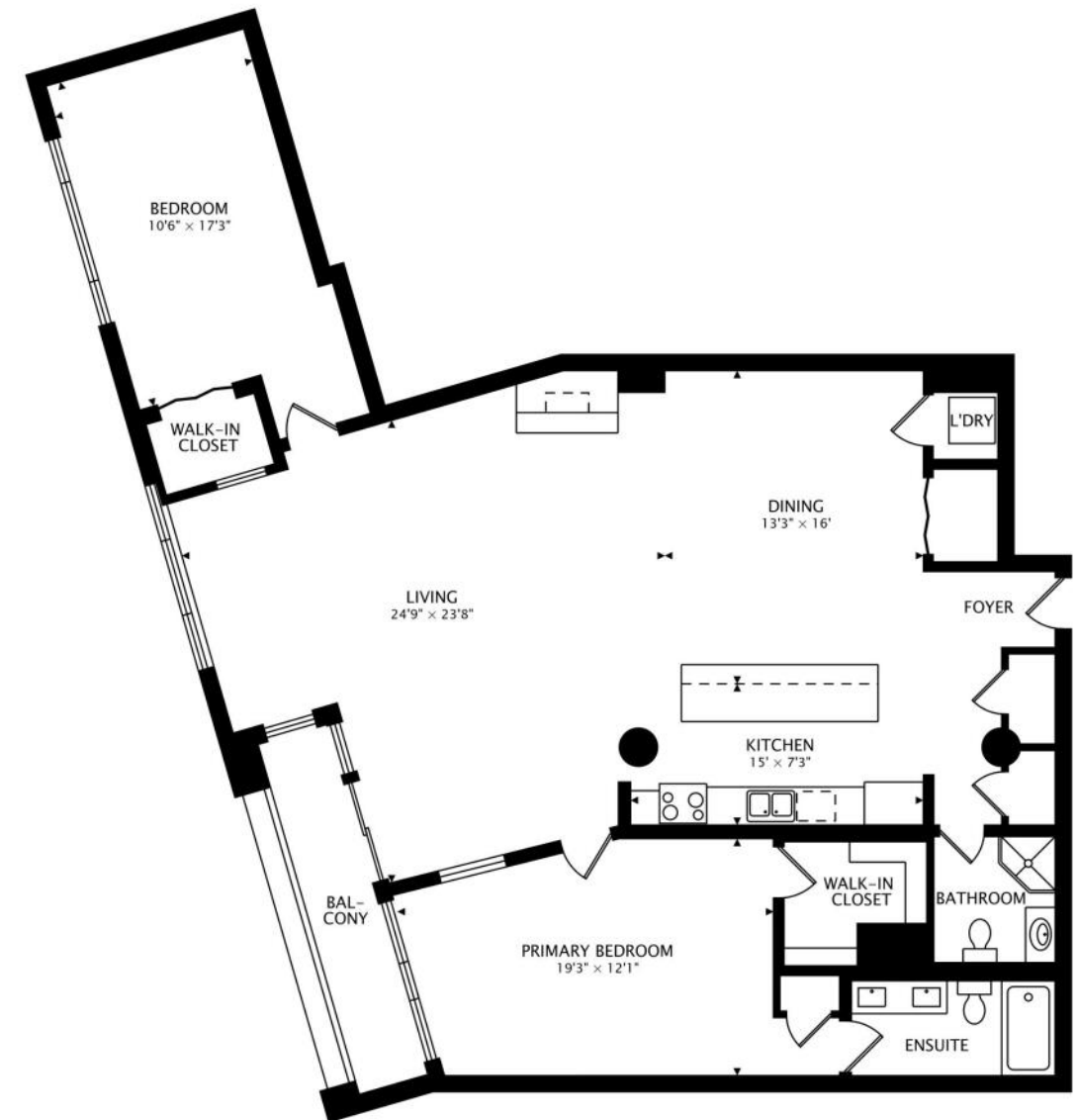


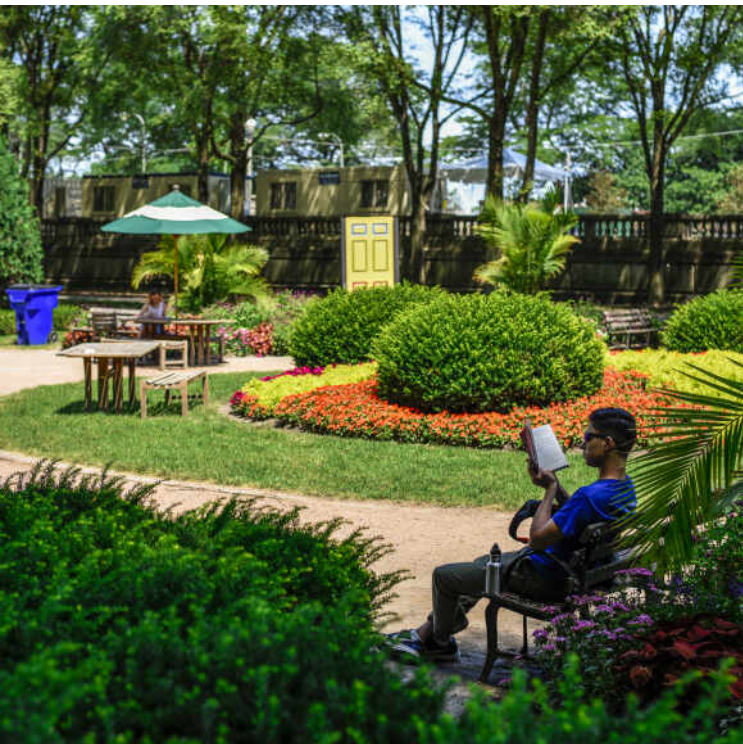
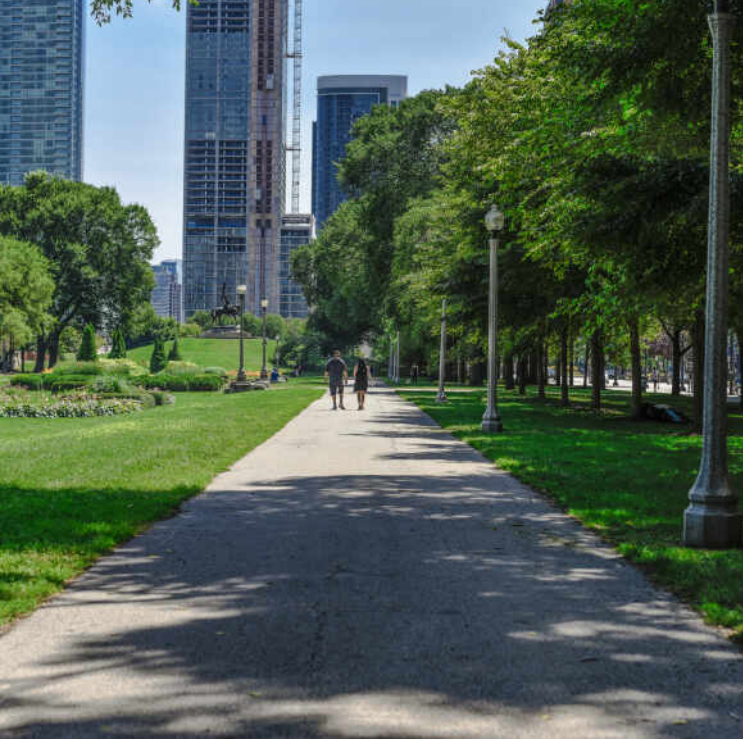
WELCOME TO 2001 S CALUMET!

Gigantic 1800 sq ft open loft in Prairie District with garage parking included. Perfect floorplan with open and expansive kitchen, living and dining rooms. 11' ceilings, updated chef's kitchen with oversized granite island, all new white cabinetry with black hardware and black apps. Split floor plan with two exceptionally bright & completely enclosed bedrooms, including a spacious primary bath with double vanity and concrete counters. Large protected balcony with incredible east views, terrific in unit storage and front load W/D. Freshly painted. Prime Garage spot #2 included. Super convenient location within easy walk to Lake, shops and restaurants plus super convenient to Green line to loop and 2 bus lines. Pets welcome!

TAXES: \$8,105
ASSESSMENTS: \$629 / MONTH







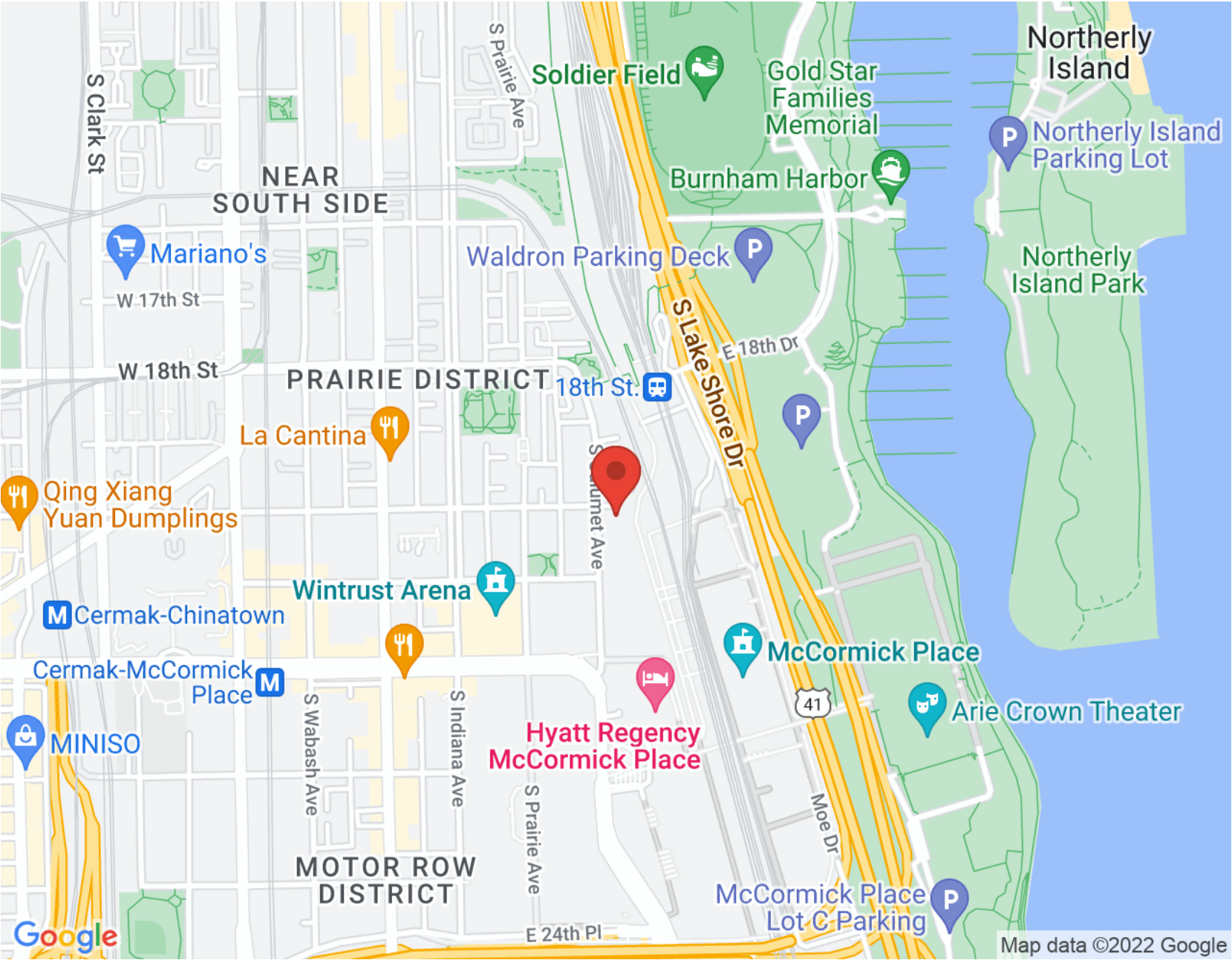
CHARACTERIZED BY TOWERING HIGH
RISES AND HISTORIC POCKETS THAT
REFLECT THE AREA'S STORIED PAST, THE
SOUTH LOOP IS A DISTINCTIVE CHICAGO
NEIGHBORHOOD.

Chicago's original Gold Coast in the late 19th century, the South Loop was once home to the likes of Marshall Field, George Pullman, and Philip Armour. Today the vibrant neighborhood is known for its access to the lakefront, shops, restaurants, parks, Museum Campus, and The Loop.

The South Loop is comprised of several historic areas including Printer's Row, which features a number of buildings that have been converted into residential lofts, along with Motor Row District and Prairie Avenue District. Meanwhile, several apartment and condominium buildings are under construction, bringing thousands of new residences to the neighborhood.

The South Loop's housing boom has brought with it an influx of retailers along with eateries and nightlife on South Michigan Avenue. The Roosevelt Collection is a popular destination featuring a movie theater and an assortment of retailers.

Museum Campus is the cultural hub of the South Loop featuring attractions including the Field Museum, Shedd Aquarium, Adler Planetarium, and Soldier Field. Residents also enjoy being in close proximity to Northerly Island and public transportation including the CTA's Roosevelt station.



NOTES _____



CONNIE ENGEL

(773) 251-3837

CENGEL@ATPROPERTIES.COM



CHRISTIE'S
INTERNATIONAL REAL ESTATE

2001SCALUMET207.INFO

All specifications, features, designs, price, assessments, taxes and materials are subject to change without notice. Depicted floor plans and architectural renderings are only an artist's impression.

