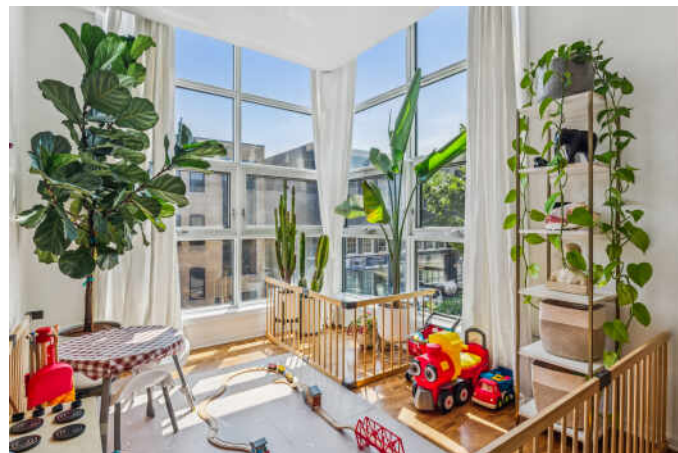


2008 W WILLOW STREET #C
BUCKTOWN

@properties®

CHRISTIE'S
INTERNATIONAL REAL ESTATE



ROOM DIMENSIONS

LIVING ROOM : 19' × 22'

FAMILY ROOM : 19' × 11'

DINING ROOM : 16' × 11'

KITCHEN : 10' × 16'

PRIMARY BEDROOM : 17' × 13'

SECOND BEDROOM : 16' × 11'

THIRD BEDROOM : 10' × 10'

BEAUTIFULLY UPDATED IN BUCKTOWN

Winner of the Grand Award by Builder Magazine, and the Silver Award for Excellence in Masonry by the Illinois/Indiana Masonry Council, this bold and thoughtfully constructed property is in the heart of Bucktown, though on a quiet one-way street, and is right off Chicago's darling, the 606 Trail. This corner unit is the largest, and is flooded with natural light, as the design includes large vertical black steel cantilevered bays positioned at the block corners. Come in either through the front entrance, or from the attached two car garage with extra storage; the first level is great flex space: use it as a family room, office, or fourth bedroom. The main level is airy, bright, and expansive; loads of space to create whatever living configuration you desire. Plenty of room for a generous living room, dining room, play area, perhaps another office? The gas fireplace updates include a pretty solid oak mantle and the surround was redone with Calacatta marble. All that fits seamlessly with the gorgeous new kitchen (2021), which has a quartz single slab island, Kohler farmhouse sink, Bosch double oven/microwave, stovetop, refrigerator, and dishwasher; Best hood, custom cabinets, Rejuvenation lighting, and pantry. Pella windows (2017) with custom window treatments; sliding glass doors with new solar roller shades (2020) to balcony off kitchen, perfect for grilling. Powder room with fab wallpaper. Upstairs are three bedrooms and two full bathrooms, including the large primary suite, with floor to ceiling windows making the most of the south and east exposures. The suite has a large organized walk-in closet. Lovely primary bathroom has a double vanity sink and soaking tub. Side by side laundry also on the bedrooms level. The top floor has a jewel of room, currently used as a wet bar with quartz counters and Zephyr Dual Zone Wine Cooler (2022), serving the massive private roof deck, but can also be used as an office oasis. The 5 year old deck wraps around the corner for two distinct seating areas, complete with electricity, water, and gas line, and has INCREDIBLE skyline views! More updates include garage door (2024), 2 Goodman furnaces and A/C condensers (2019). Tear off roof by Presidential Roofing in 2015, with warranty through 9/2035.

3 BEDROOM

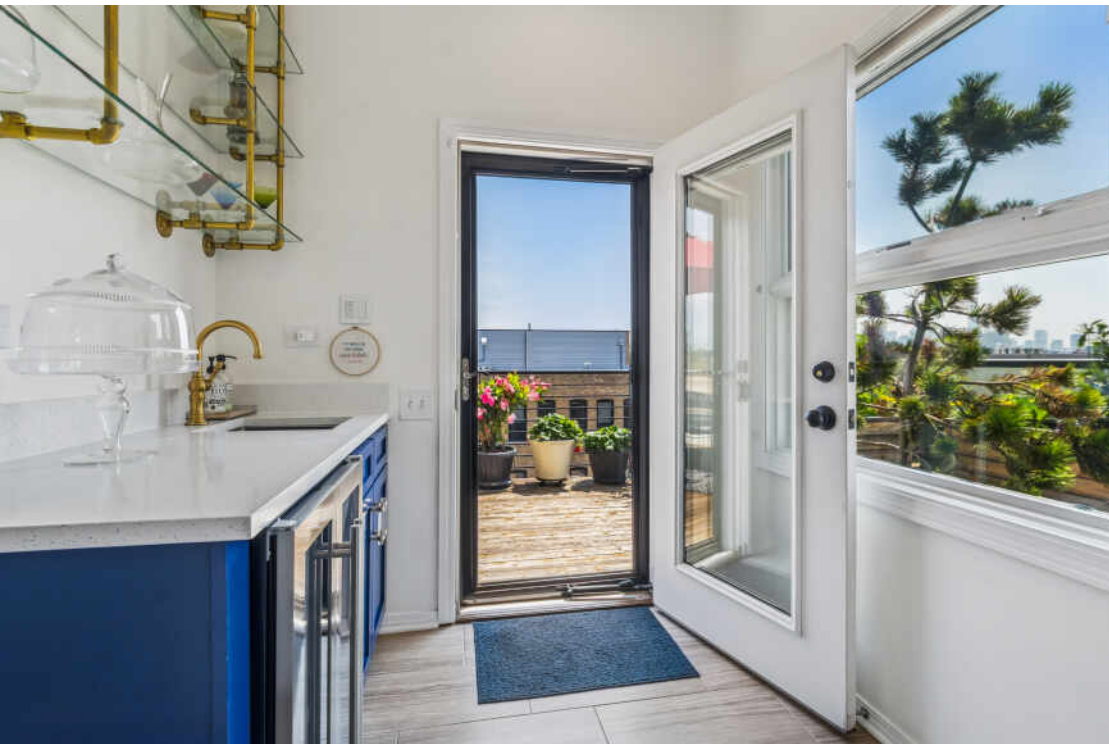
2.1 BATH

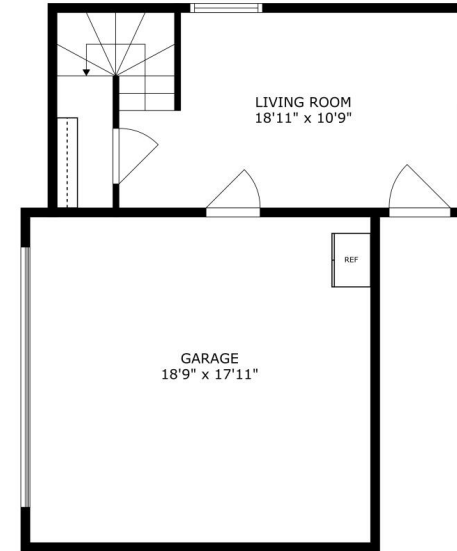
TAXES: 17508

ASSESSMENTS: 315

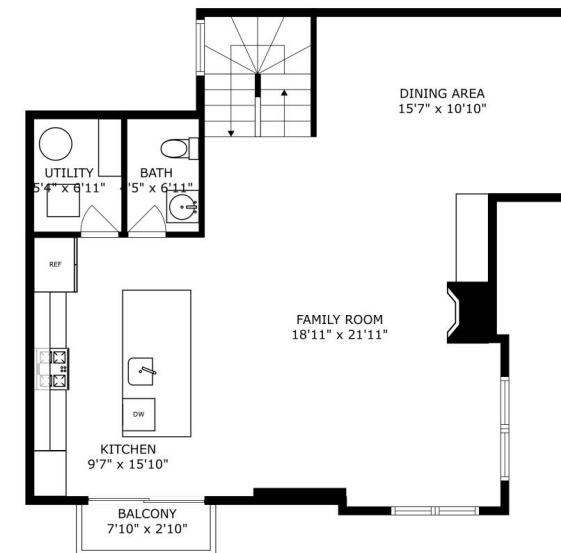
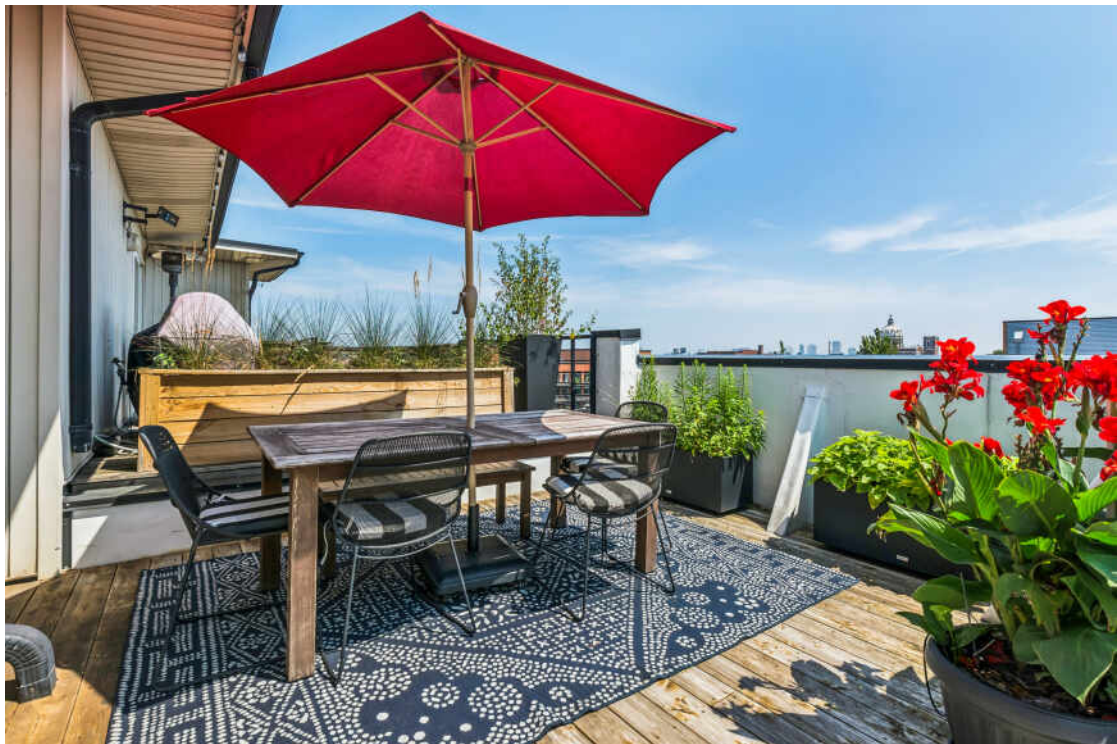








SIZES AND DIMENSIONS ARE APPROXIMATE, ACTUAL MAY VARY.



SIZES AND DIMENSIONS ARE APPROXIMATE, ACTUAL MAY VARY.



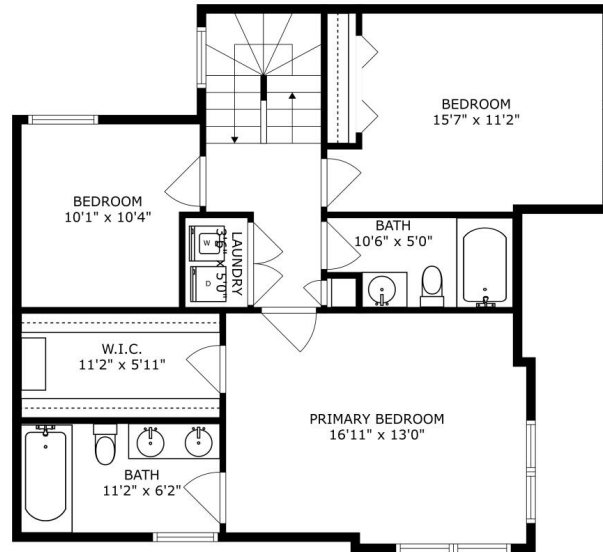
AS AN ARTISTS' COMMUNITY, NIGHTLIFE HOTSPOT, FOODIE DESTINATION, AND SHOPPING MECCA, **BUCKTOWN** IS UNDISPUTEDLY ONE OF CHICAGO'S TRENDIEST NEIGHBORHOODS.

Bucktown's restaurant scene is diverse and local friendly. Residents also enjoy a unique mix of independent bookstores, shops, bars, galleries, and theaters. Meanwhile, upscale retailers have made the neighborhood a designer destination.

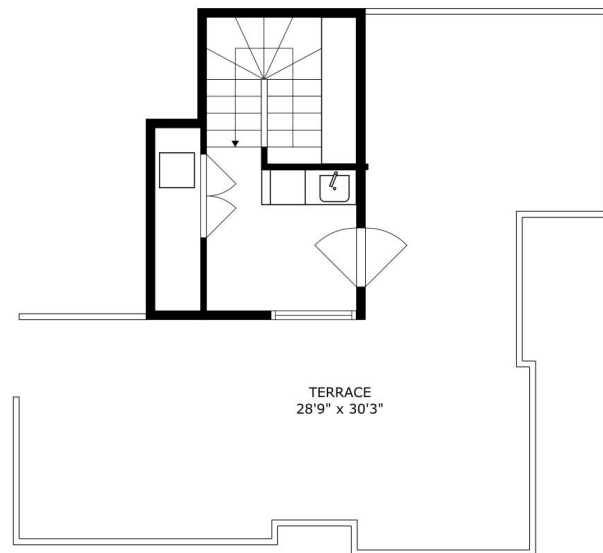
Overlooking the six corners intersection, a stunning Art Deco skyscraper is now a modern boutique hotel with a rooftop bar and amazing views. A stately historic bank building on the corner is now home to a pharmacy with stunning archways and stained-glass ceilings.

Located a few miles northwest of The Loop, Bucktown has a variety of housing including modern new construction, stately brownstones, and loft apartments and condominiums.

Between the CTA's Blue Line, the 606 Trail, and numerous bus routes, it's easy for residents to get to surrounding neighborhoods. Likewise, drivers appreciate being able to hop on the expressway just east of the community.



SIZES AND DIMENSIONS ARE APPROXIMATE, ACTUAL MAY VARY.



SIZES AND DIMENSIONS ARE APPROXIMATE, ACTUAL MAY VARY.

NOTES

[illegible]



INDIA WHITESIDE

(773) 391-1128

INDIAWHITESIDE.COM

INDIA@ATPROPERTIES.COM

CHOOSE EXPERIENCE



north**edge**group.net
Your Neighbor | Your REALTOR®

@properties | **CHRISTIE'S**
INTERNATIONAL REAL ESTATE

All specifications, features, designs, price, assessments, taxes and materials are subject to change without notice. Depicted floor plans and architectural renderings are only an artist's impression.

