

2017 N NEW ENGLAND AVENUE
WEST LOOP





ROOM DIMENSIONS

LIVING ROOM : 14' × 20'

DINING ROOM : 12' × 14'

KITCHEN : 09' × 14'

PRIMARY BEDROOM : 12' × 13'

SECOND BEDROOM : 11' × 16'

THIRD BEDROOM : 11' × 14'

FOURTH BEDROOM : 11' × 11'

REC ROOM : 20' × 38'

2ND KITCHEN : 9' × 14'

4 BEDROOM

3 BATH

TAXES: \$4,156

NOTHING TO DO BUT MOVE IN AND ENJOY!

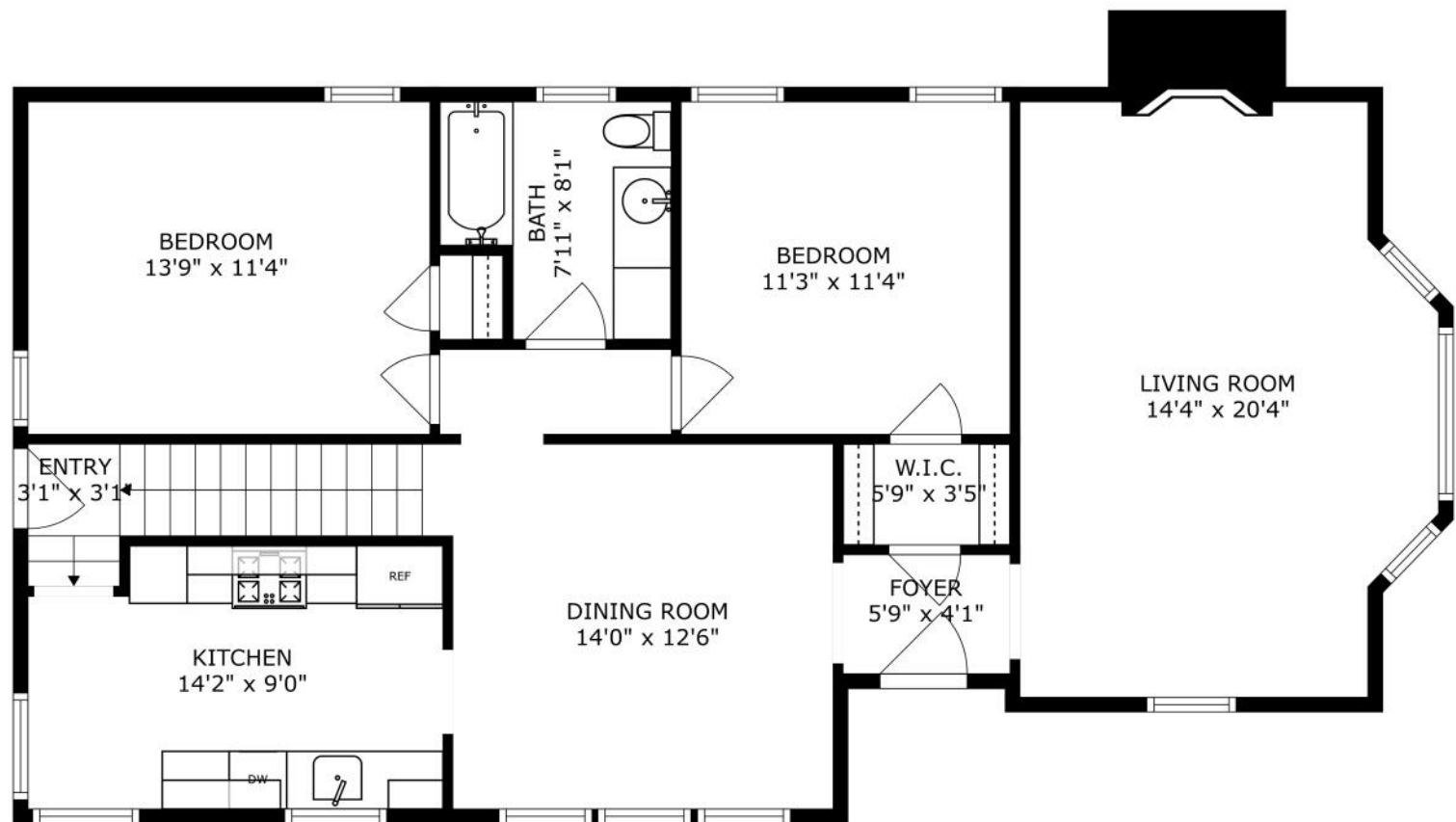
This charming home is the one you have been searching for! Nothing to do but move in and enjoy! Meticulously maintained and updated. Foyer opens to LR with beautiful hardwood floors, large bay window and fireplace too! Formal DR has ample space for those big parties! Newly updated kitchen with beautiful custom cabinets, top quality stainless steel appliance package, for the serious chef and excellent counter space for meal prep! Enjoy a quick meal at the cafe table which sets off the corner window overlooking the backyard! 2 ample bedrooms and a full newer bath complete this floor. 2nd floor offers a huge primary bedroom with sitting room and double closets, 2nd bedroom currently used as an office and full newer bath too making the entire 2nd floor a primary suite should you wish. The basement is a surprising treat with new LVT floors, a 2nd kitchen, laundry, newer full bath, Costco room for all your storage needs, utility room and a huge rec room too! The backyard is maintenance free, what a treat! Large garage with storage room off to the side. This home really does check all the boxes. Come see it today and make it your new home!



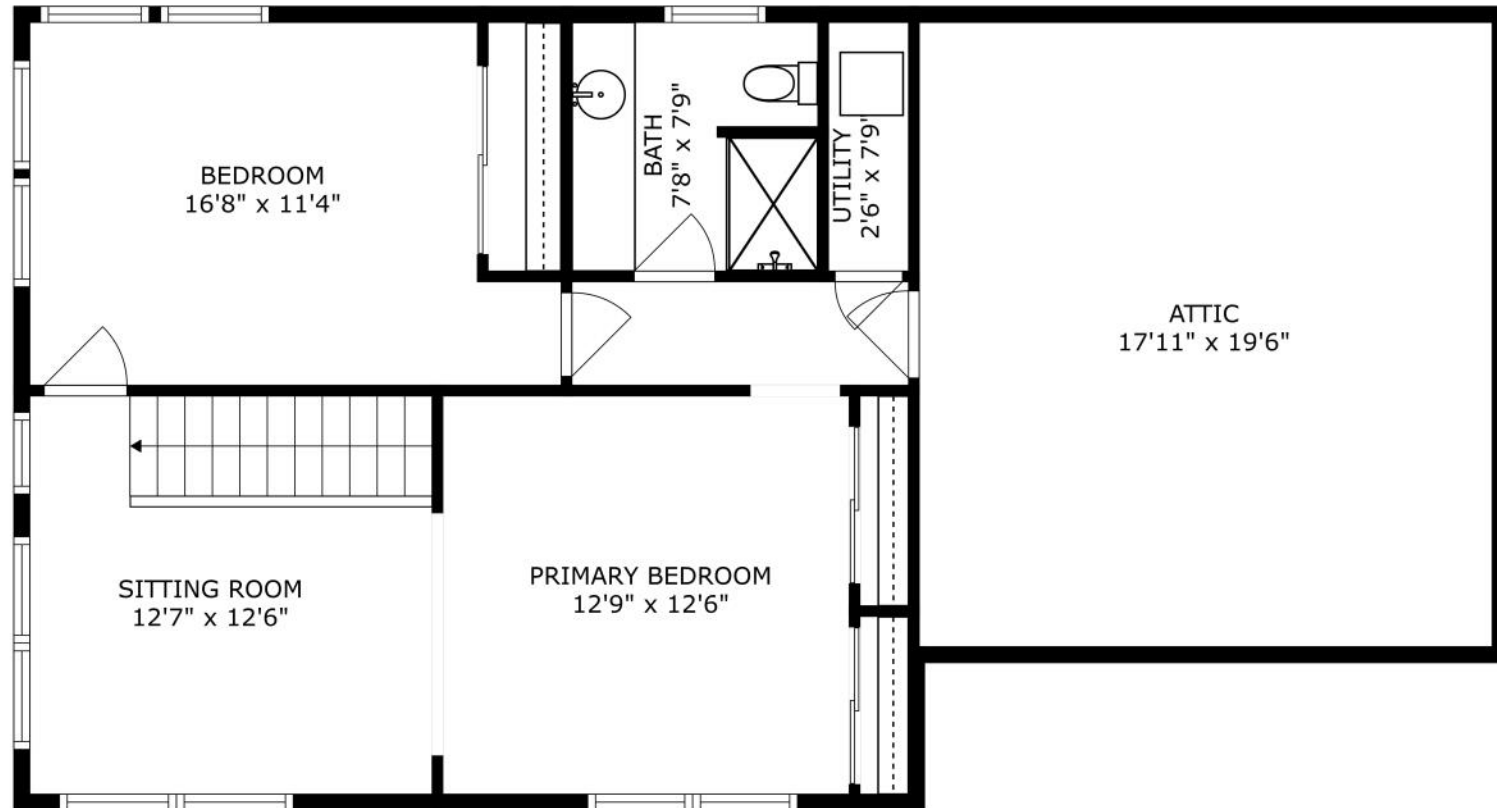




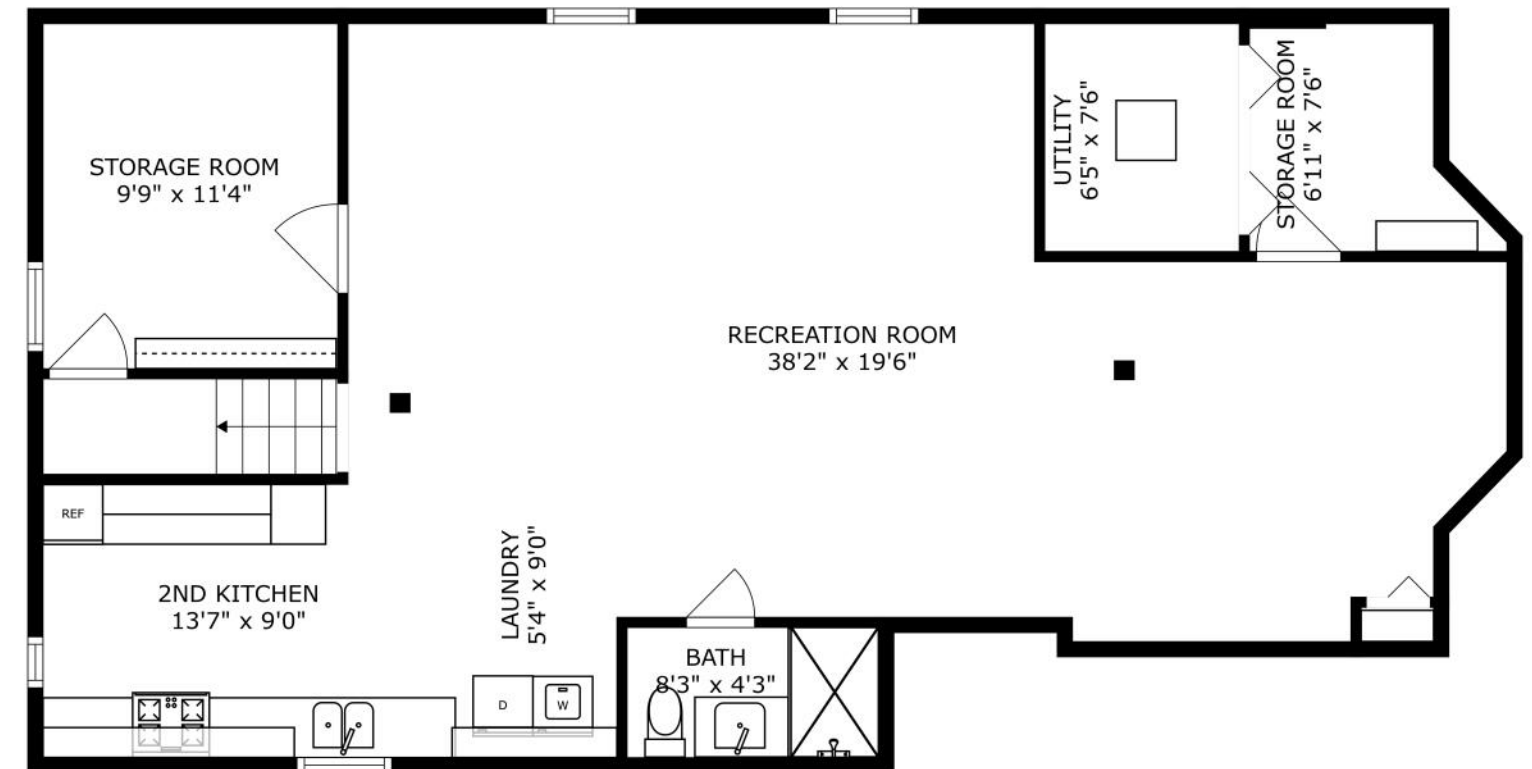




SIZES AND DIMENSIONS ARE APPROXIMATE, ACTUAL MAY VARY.



SIZES AND DIMENSIONS ARE APPROXIMATE, ACTUAL MAY VARY.



SIZES AND DIMENSIONS ARE APPROXIMATE, ACTUAL MAY VARY.



GREER HASEMAN

(708) 606-8896

708-848-0200

GREER@ATPROPERTIES.COM

LINKEDIN.COM/IN/GREERHASEMAN



CHRIS CURRAN

(708) 366-0400

708-848-0200

CHRISCURRAN@ATPROPERTIES.COM



CHRISTIE'S
INTERNATIONAL REAL ESTATE