



2019 LANGLEY AVENUE ST. JOSEPH



@properties | CHRISTIE'S  
INTERNATIONAL REAL ESTATE

LP LUXURY  
PORTFOLIO  
INTERNATIONAL



ANNE GAIN, GRI, ABR, SRS, AHWD, RSPS BROKER

269.277.6077 mobile  
269.469.0700 office  
annegain@atproperties.com

THE Anne Gain  
GROUP



2019 LANGLEY AVENUE • ST. JOSEPH







## 2019 LANGLEY AVENUE GRACIOUS + GRAND ON THE ST. JOSEPH RIVER

### FEATURES

Perched along the tranquil riverbank, this stunning luxury home is a masterpiece of elegance and design. The completely remodeled kitchen is a chefs dream, featuring state of the art appliances, 72" built-in refrigerator/freezer and expansive walk in pantry for ultimate convenience. The expansive floorplan accentuated by floor to ceiling windows, ensures seamless integration of indoor and outdoor spaces, flooding the home with natural light and offering spectacular river views from nearly every angle! The great room offers a spacious and inviting atmosphere for both relaxing and entertaining and adjoins a equally eye catching family room with built in bar area. The deluxe primary suite, also recently remodeled, provides a luxurious retreat with top tier finishes and breathtaking views. Step outside to a lavish outdoor living area complete with outdoor kitchen, several seating areas, and beautifully landscaped gardens, perfect for gathering and relaxing in the peaceful surroundings. Detached 5 car garage is sure to please the car enthusiast! This home represents the perfect blend of modern luxury and natural beauty all within seconds of downtown, beaches, shopping, and restaurants.



**ANNE GAIN, GRI, ABR, SRS, AHWD, RSPS** BROKER

269.277.6077 mobile  
269.469.0700 office

[annegain@atproperties.com](mailto:annegain@atproperties.com)









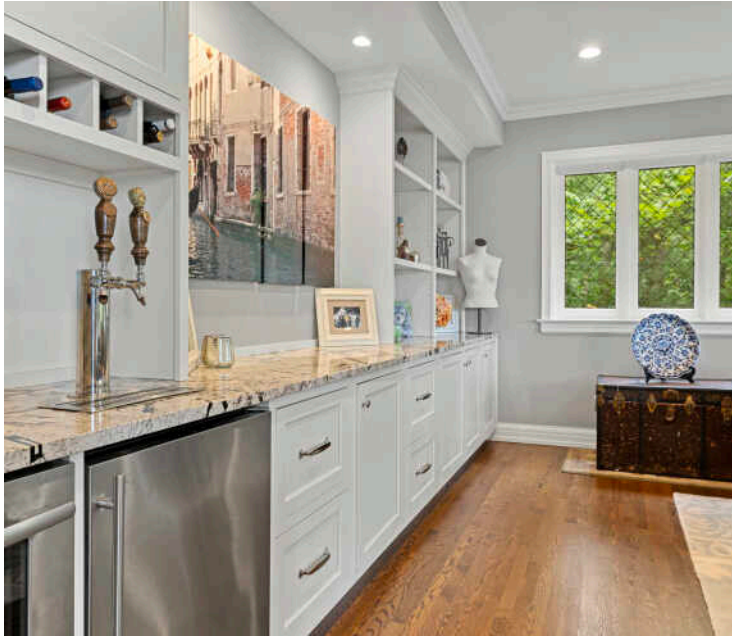












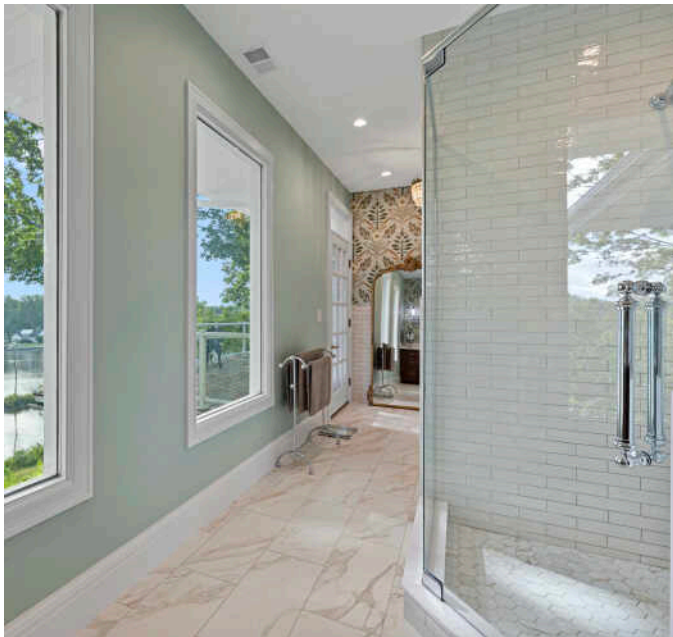




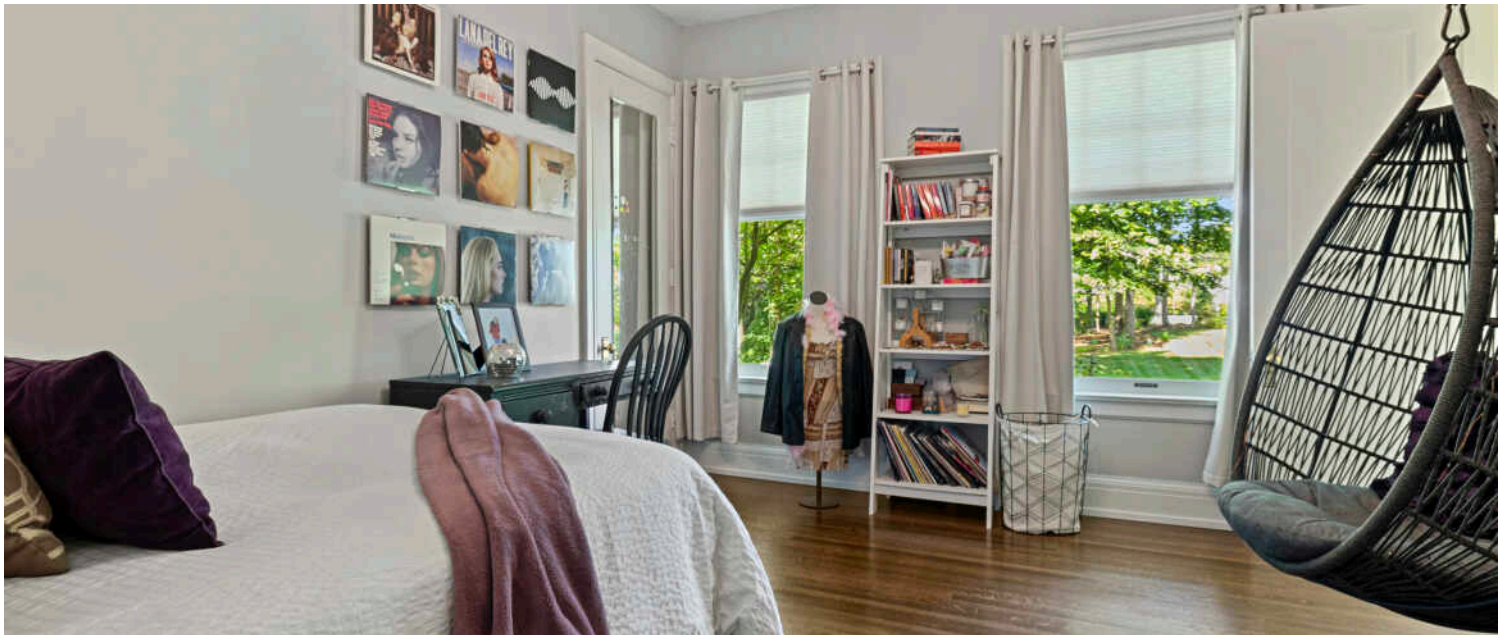
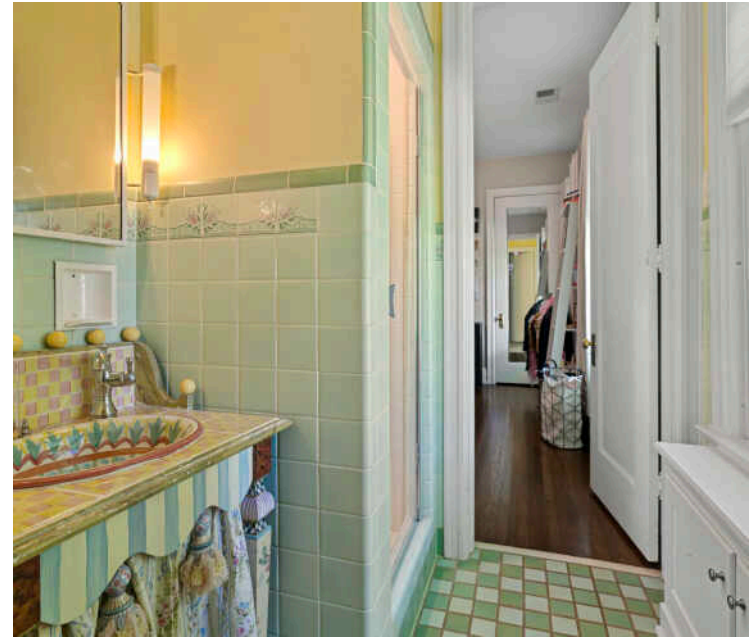
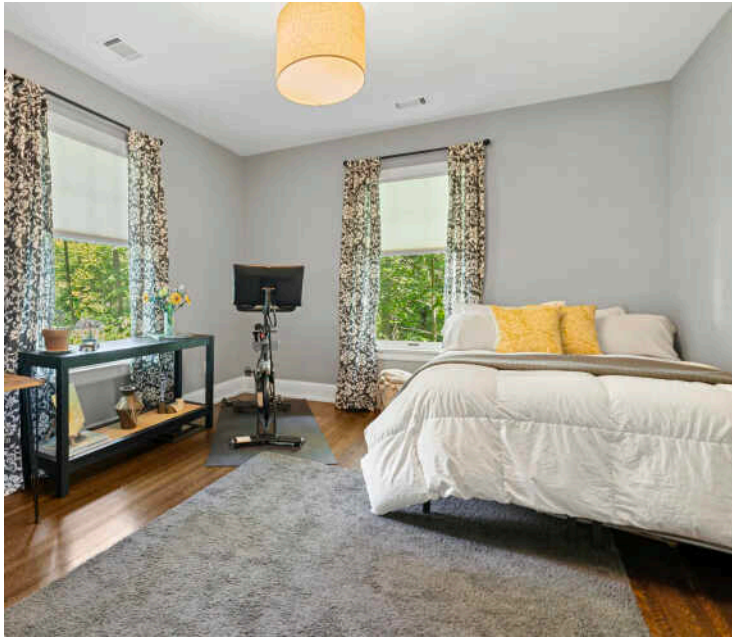


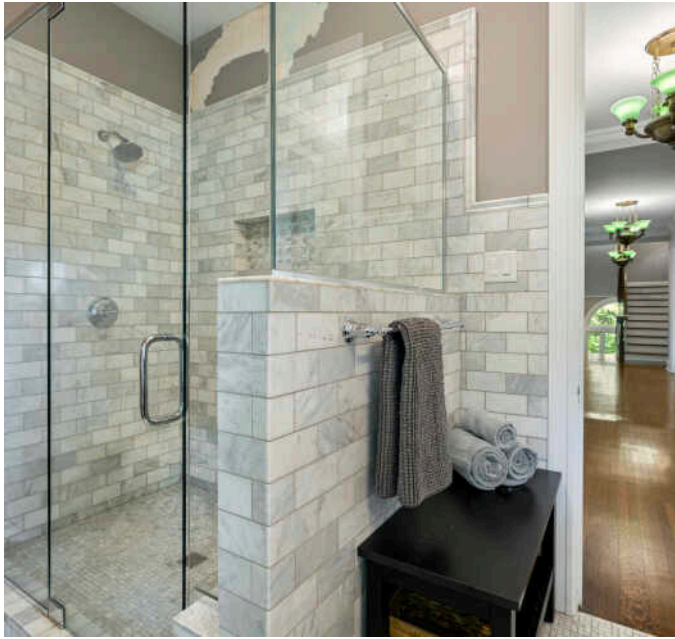


















































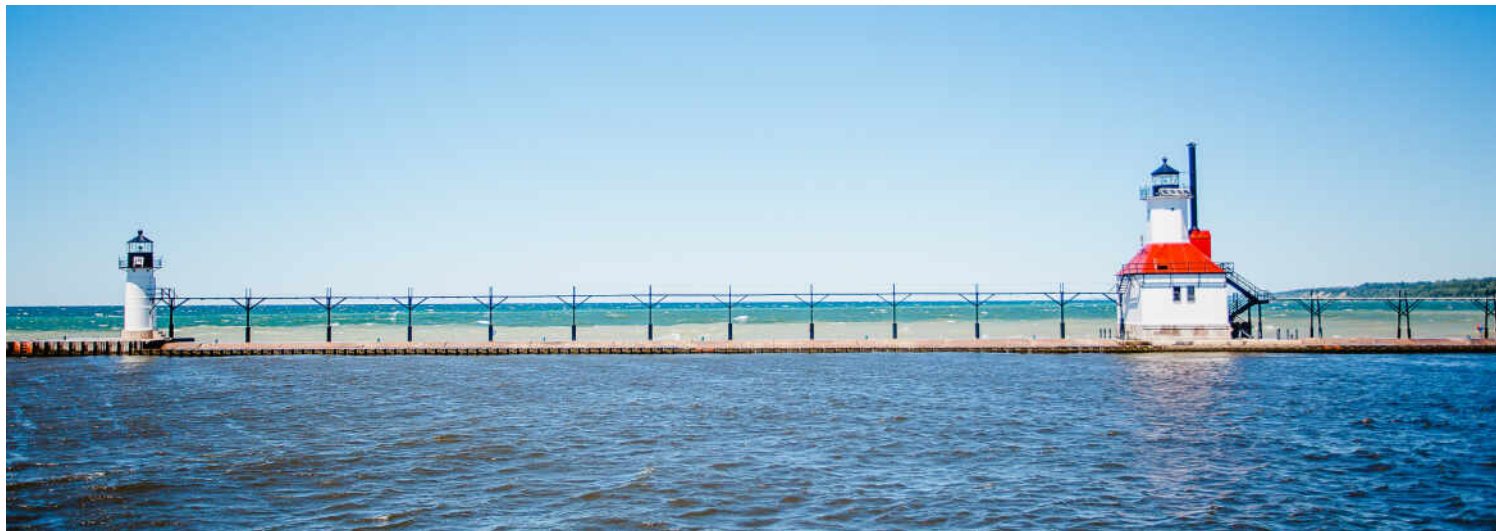




**TOTAL: 6432 sq. ft**  
 BELOW GROUND: 756 sq. ft, FLOOR 2: 2688 sq. ft, FLOOR 3: 2070 sq. ft, FLOOR 4: 918 sq. ft  
 EXCLUDED AREAS: STORAGE: 1179 sq. ft, GARAGE: 1132 sq. ft, SHED: 246 sq. ft,  
 PATIO: 1565 sq. ft, BALCONY: 249 sq. ft, UNDEFINED: 31 sq. ft,  
 LOW CEILING: 91 sq. ft, ATTIC: 78 sq. ft

FLOOR PLAN CREATED BY CUBICASA APP. MEASUREMENTS DEEMED HIGHLY RELIABLE BUT NOT GUARANTEED.







KNOWN AS “THE RIVIERA OF THE MIDWEST,” **ST. JOSEPH** IS A RESORT COMMUNITY SURROUNDED BY PICTURESQUE BEACHES, WITH LAKE MICHIGAN AS ITS SPARKLING BACKDROP.

*Locals love everything this lakefront community has to offer, from postcard-worthy views to a collection of independent restaurants and boutique shops. Seasonal festivals and events provide even more entertainment for residents of St. Joseph and surrounding communities.*

The city was founded as a shipping community and has since evolved into an affluent resort community.

St. Joseph’s lakeshore is lined with idyllic beaches and picturesque sand dune formations. Inland is a lush countryside that produces some of the country’s best orchards and vineyards. Downtown St. Joseph is comprised of local shops and eclectic dining options.

Outdoor enthusiasts have limitless options. The Margaret B. Upton Arboretum showcases many sculptures and park benches and is adjacent to downtown. Locals and visitors can also enjoy the many parks, such as Lake Bluff Park, Tiscornia Park, and Silver Beach County Park, and recreational facilities that offer fishing, boating, and swimming.

St. Joseph hosts various festivals that attract thousands of visitors, including the annual Chalk the Block Arts Festival and live music at the Shadowland Pavilion at Silver Beach.

Housing in St. Joseph includes homes overlooking the bluff and plenty of opportunities to own property with Lake Michigan frontage, ranging from beach cottages to custom-built mansions.

St. Joseph has easy access to I-94, offering convenient travel to both Chicago and Detroit.











