

2020 CHESTNUT AVENUE #312

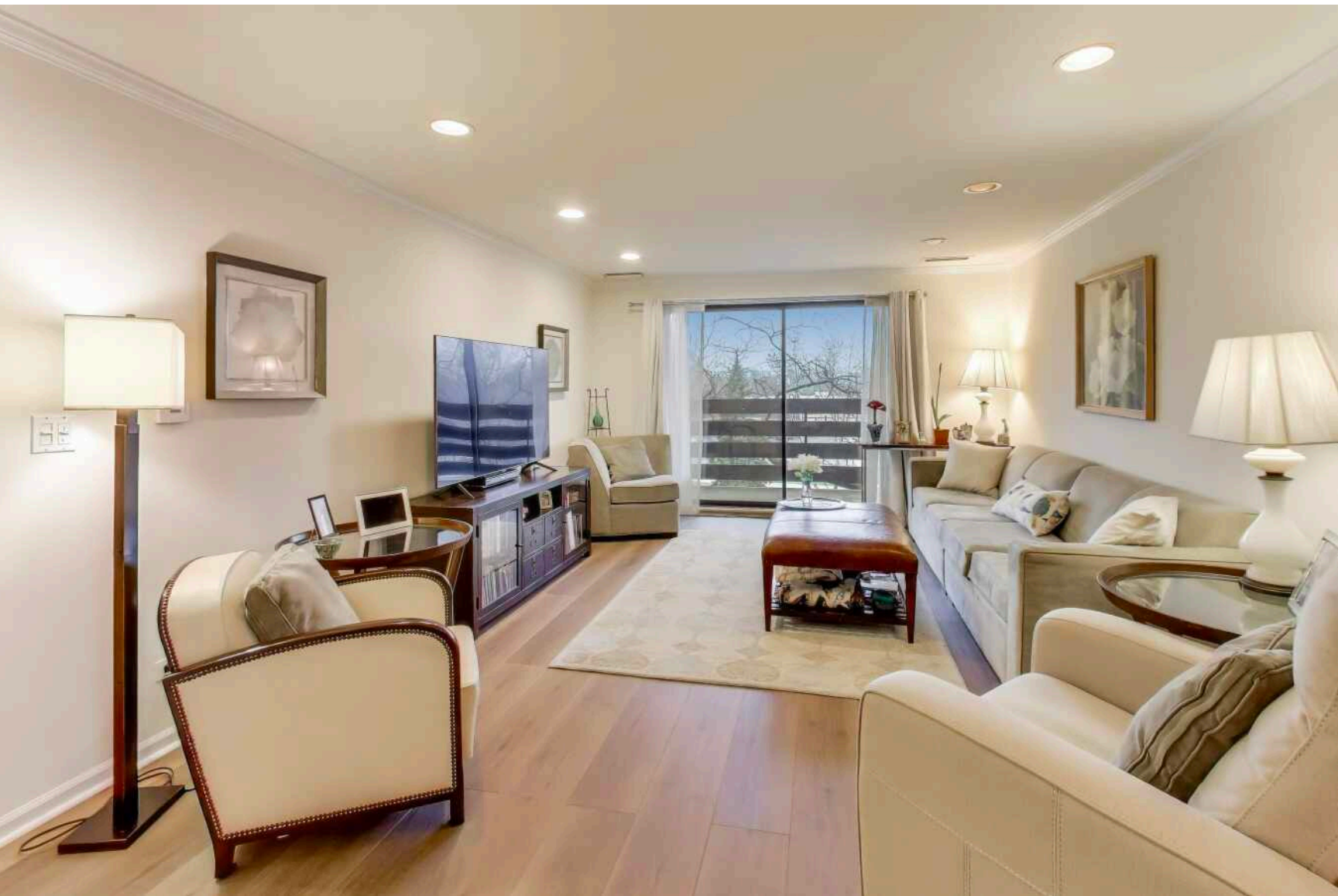
GLENVIEW

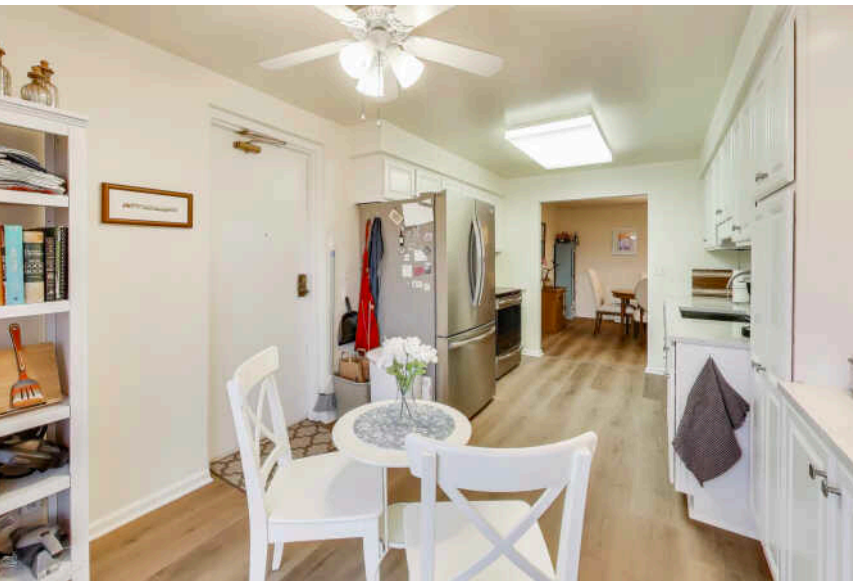


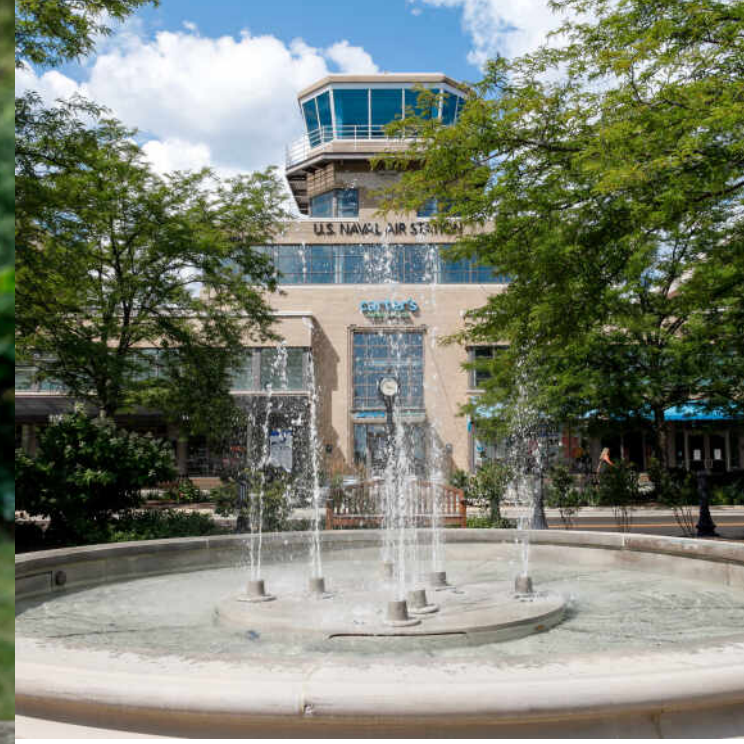


2 BEDROOM
2 BATH

Hone your culinary delights in this white kitchen with quartz countertops and modern appliances. Once you are satisfied, invite your friends over for a tasting, and create a beautiful table in your spacious dining room that flows effortlessly into the living room. Open the sliding glass doors to your balcony to let in the fresh air and expand the space. You clearly know how to entertain! If you are thinking your creation is perfect for one or two, enjoy it at your kitchen table and take in the aromas. The room sizes in this unit may surprise you as they are quite spacious and make living in VLT a pleasure. Just down the hall are two spacious bedrooms; the primary bedroom has an en-suite bath, while the hall bath features a shower and access to the laundry room. The closets are spacious, and additional storage is conveniently located on the same floor. A one-car heated garage space is included. Bonuses include an exercise room, pool, tennis and pickleball courts, a BBQ area, and a fire pit. Enjoy the numerous updates this unit offers and its convenient location. Just east of the Glen and close to the train, shops, and restaurants, this makes it ideal.







JUST 20 MILES FROM DOWNTOWN CHICAGO, **GLENVIEW** IS A DESTINATION IN ITS OWN RIGHT.

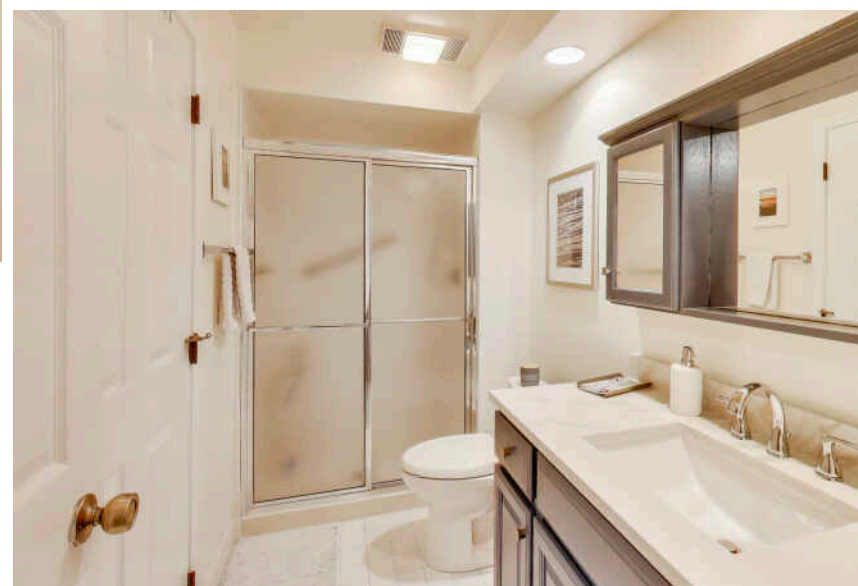
The scenic North Shore town has expanded rapidly thanks to its established neighborhoods, convenient access to transportation, and array of amenities.

More than 45,000 people call Glenview home, with properties ranging from townhomes and condominiums to luxury custom homes featuring the latest amenities. Newer homes can also be found at The Glen, a large development on the site of the former Glenview Naval Air Station that offers an assortment of shops and restaurants, a movie complex, the Kohl Children's Museum, and access to one of the town's two Metra stations.

Glenview is served by a number of public and private schools, including Glenbrook South High School, ranked among the top in the nation according to Business Insider.

The Glenview Park District offers indoor and outdoor pools, golf courses, soccer fields, nature trails, an ice center, tennis club, and multi-purpose community center.

In addition to modern development, Glenview celebrates and preserves its early days with two notable attractions: Wagner Farm and The Grove. A 20-acre working farm, Wagner Farm has hands-on programs - horseback riding, tractor driving, and other activities - that reflect a day in the life of a 1920s farmer. The Grove, a National Historic Landmark, includes a prairie, nature trails, historic buildings, and a log cabin that dates back to the 1850s.



NOTES

[illegible]



COLLEEN P. MCGINNIS

8472045613

8478810200

COLLEENMCGINNIS@ATPROPERTIES.COM



All specifications, features, designs, price, assessments, taxes and materials are subject to change without notice. Depicted floor plans and architectural renderings are only an artist's impression.

