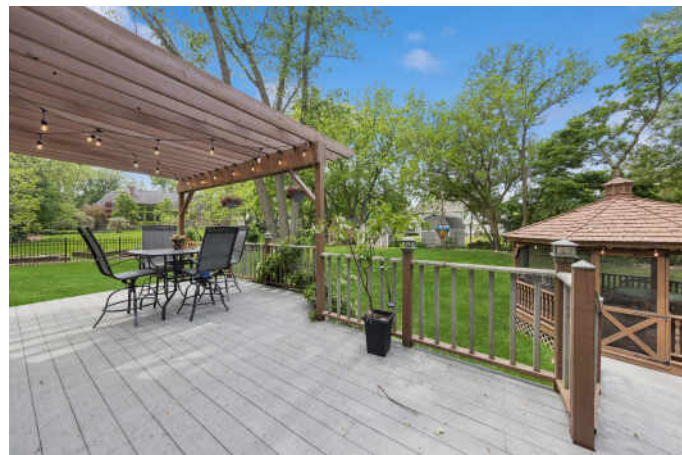


# 2030 NACHTMAN COURT

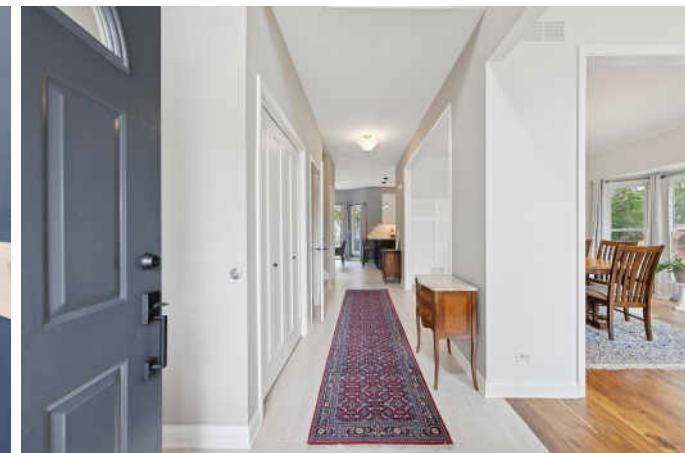
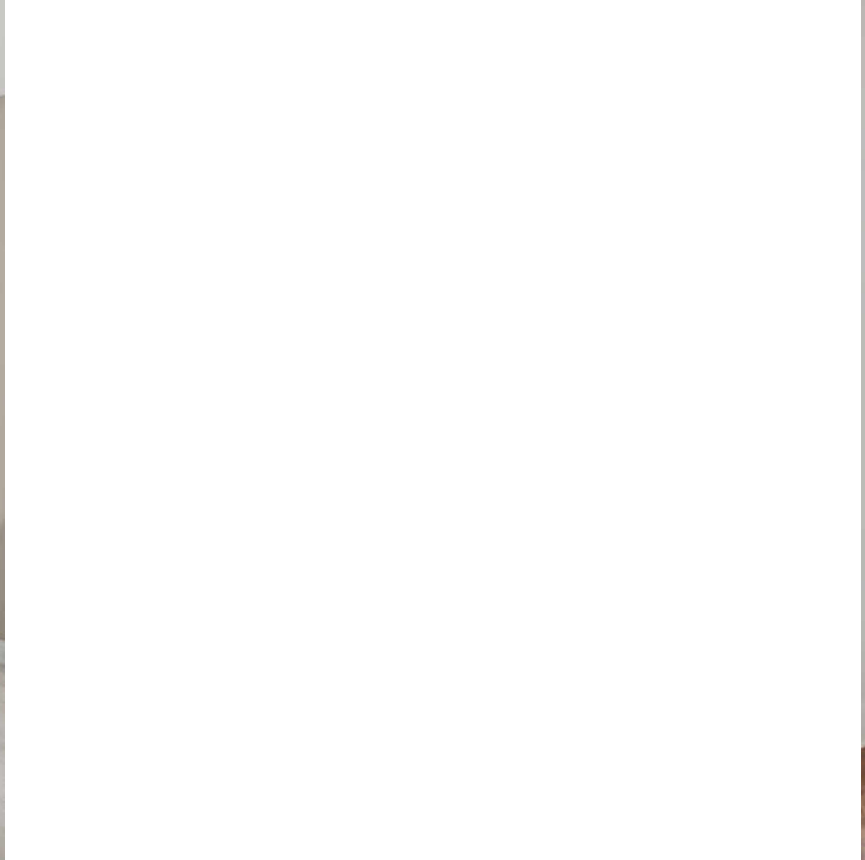
WHEATON

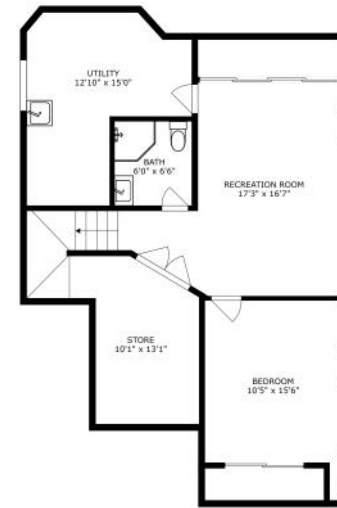
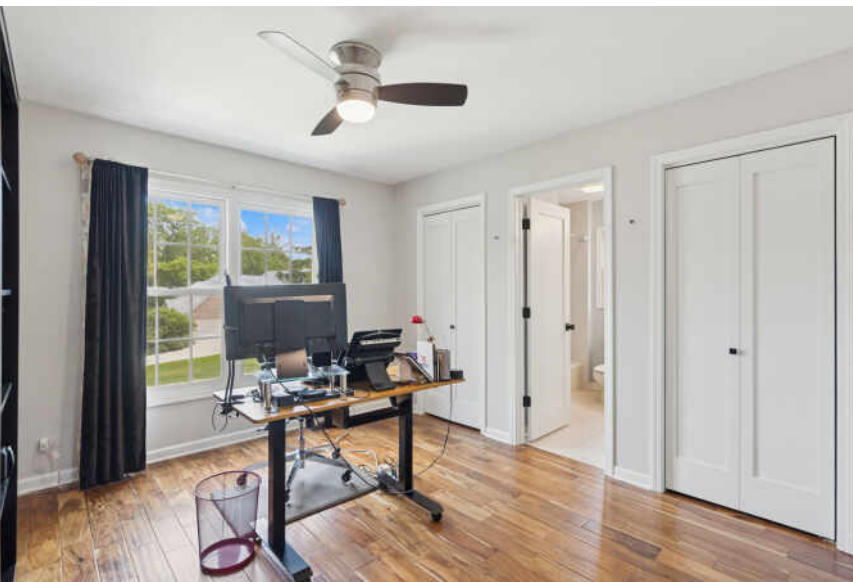
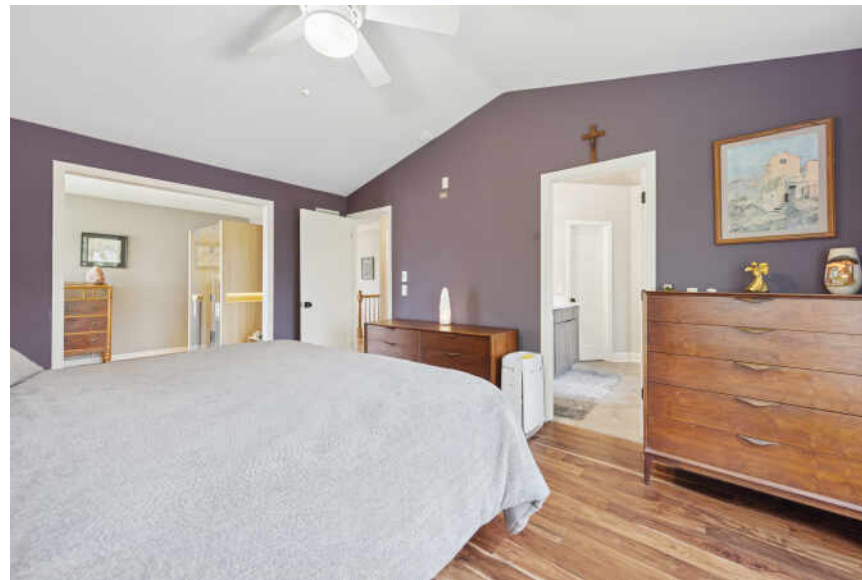




## 2030 NACHTMAN, WHEATON, IL 60187

Stunning 4-Bed, 3.5-Bath Home in Wheaton! Tucked away at the end of a peaceful cul-de-sac, this stunning home offers the perfect combination of space, style, and functionality. The main level features thoughtful updates throughout, while the upper level includes three generously sized bedrooms plus a versatile seating area off the primary suite-ideal as a private retreat, office, or easily enclosed for a true fourth bedroom with it's own entry already in place. Downstairs, the finished basement you'll find a spacious guest bedroom and a full bathroom, perfect for visitors or giving someone their own space away from the main living areas. Step outside to an enormous backyard oasis with a large deck and charming gazebo-perfect for entertaining, watching the kids play, or letting your pets roam freely. This home offers incredible flexibility, privacy, and room to grow-all in a highly desirable Wheaton neighborhood. Glen Ellyn schools. Check out the fun things, huge round ice cubes, no touch kitchen faucet, 9 ft ceilings throughout, and 18 ft ceilings in both the Living Room and Family room. This is the perfect blend of privacy, community, and everyday convenience!

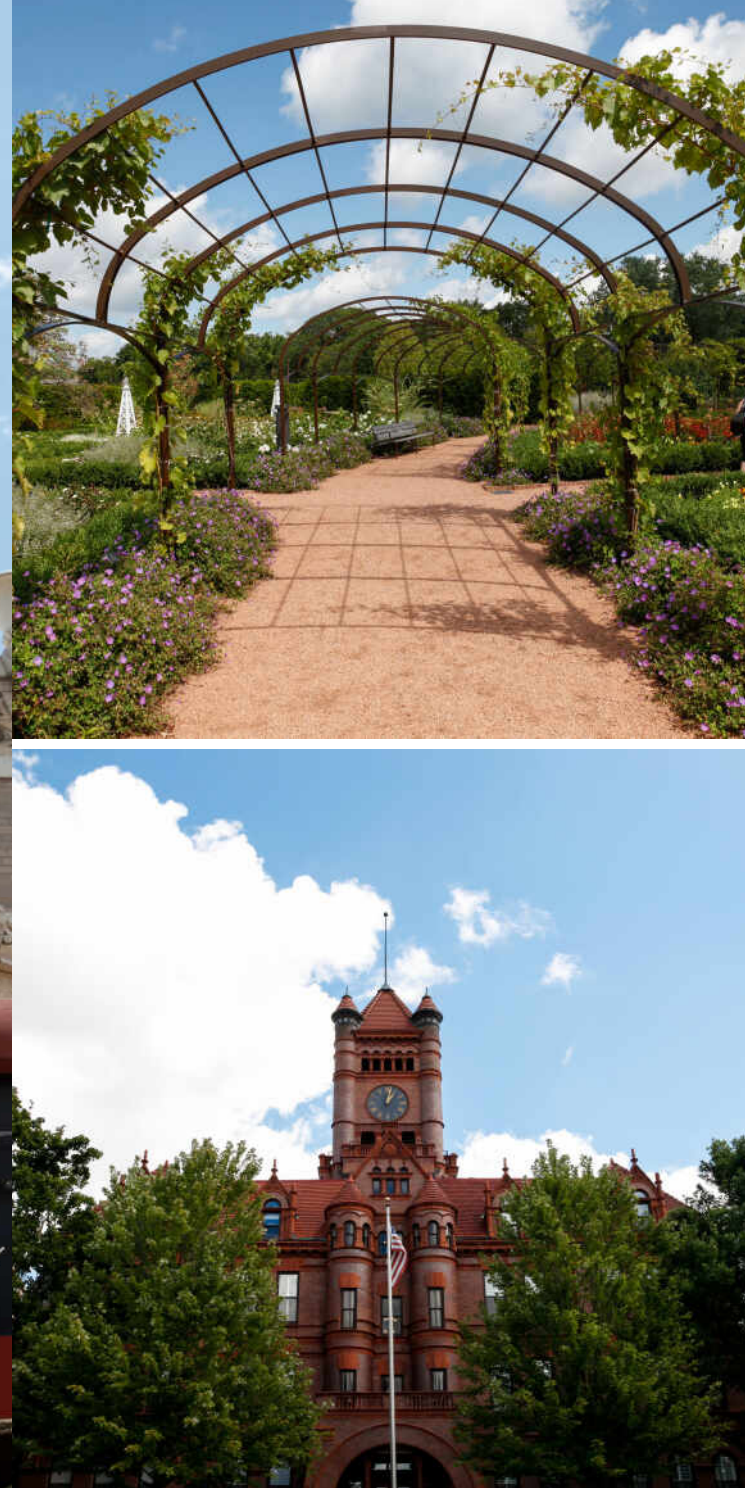




SIZES AND DIMENSIONS ARE APPROXIMATE, ACTUAL MAY VARY.



SIZES AND DIMENSIONS ARE APPROXIMATE, ACTUAL MAY VARY.



## WHEATON HAS RACKED UP MORE THAN ITS SHARE OF AWARDS.

The affluent community ranks among the “top 25 highest earning towns” and one of the best places to live by *Money* magazine.

The Wheaton Public Library is regularly ranked among the top in the nation. The Wheaton Park District, with 52 parks and more than 800 acres, has won several National Gold Medal Awards for Excellence from the National Recreation and Park Association. The park district includes the 135-acre Lincoln Marsh Natural Area with over 300 plant and animal species; the Cosley Zoo, which houses more than 200 animals; and the 27-hole Arrowhead Golf Club.

Wheaton is home to the prestigious Chicago Golf Club, the oldest 18-hole course in the country and host of numerous U.S. Open and U.S. Amateur Golf Championships, and the Cantigny Park and Golf Course, which includes a championship golf course and two museums. The county also owns the Danada Forest Preserve and Equestrian Center, once an estate and home to a Kentucky Derby winner.

The community has seen considerable residential and business development including its landmark, the Wheaton Center, a six-building apartment complex downtown that includes two 20-story high-rise buildings.



2030 NACHTMAN COURT 11



## LINDA WEBER

(630) 779-6606

LINDAWEBER@ATPROPERTIES.COM

\*\*\*\*\*IT'S YOUR MOVE \*\*\*\*\*

....LOVE WHERE YOU LIVE....