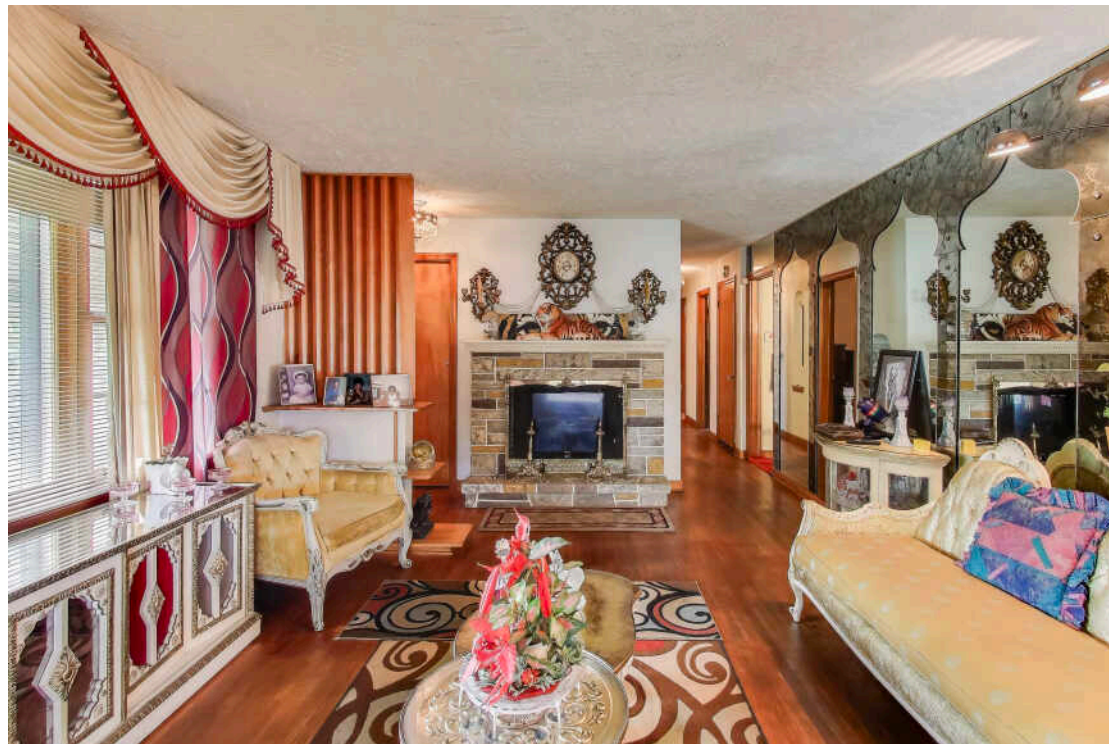


2032 S 22ND AVENUE
BROADVIEW





ROOM DIMENSIONS

LIVING ROOM : 13' × 18'

FAMILY ROOM : 30' × 27'

DINING ROOM : 11' × 10'

KITCHEN : 11' × 13'

PRIMARY BEDROOM : 13' × 12'

SECOND BEDROOM : 13' × 11'

THIRD BEDROOM : 10' × 10'

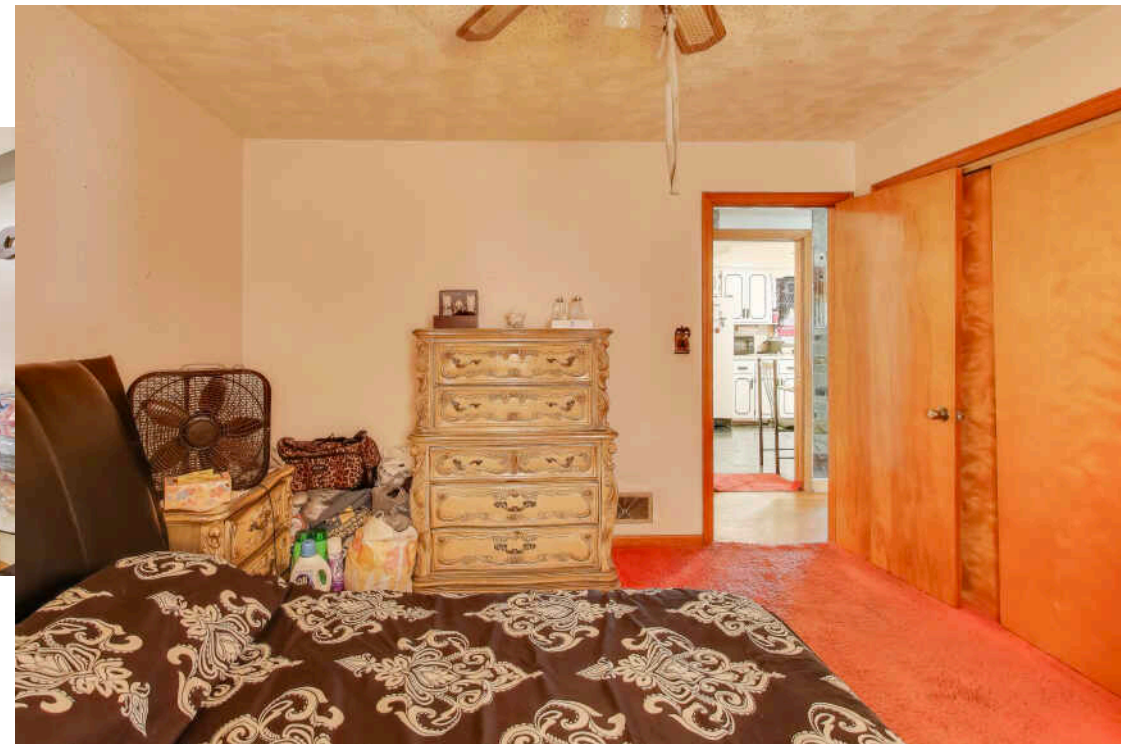
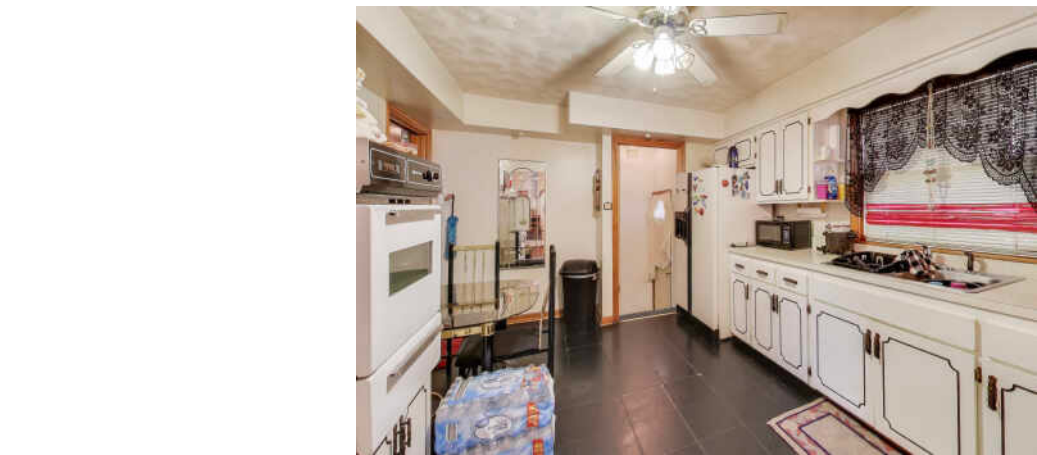
3 BEDROOM

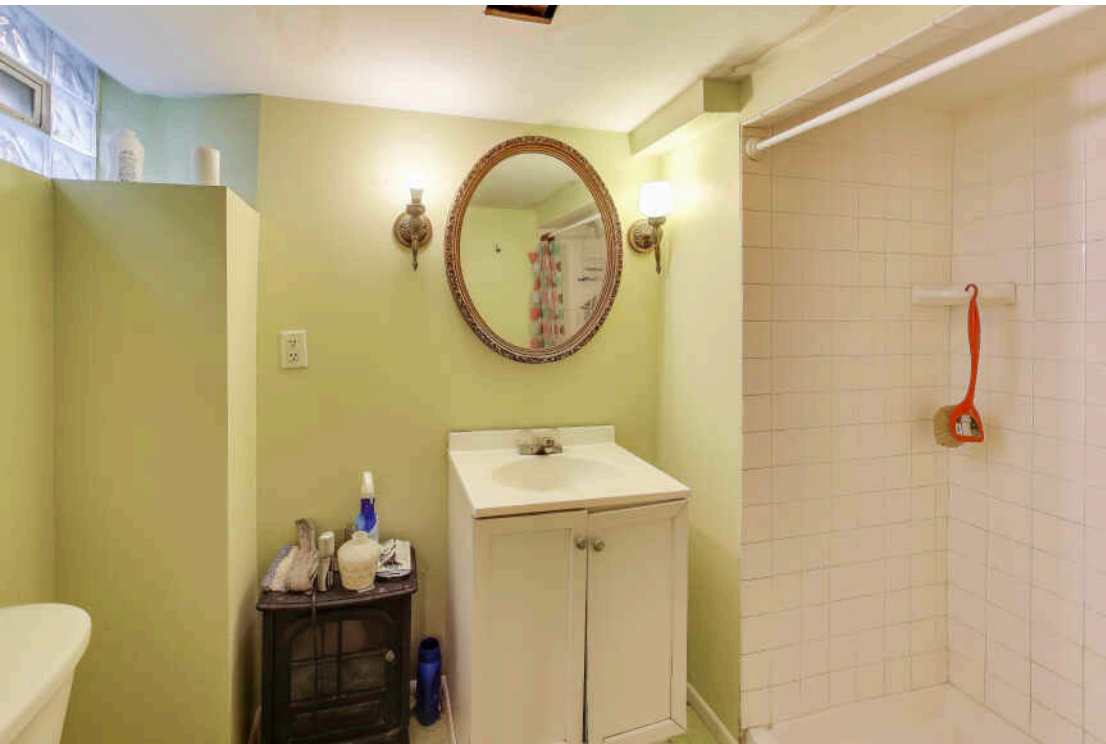
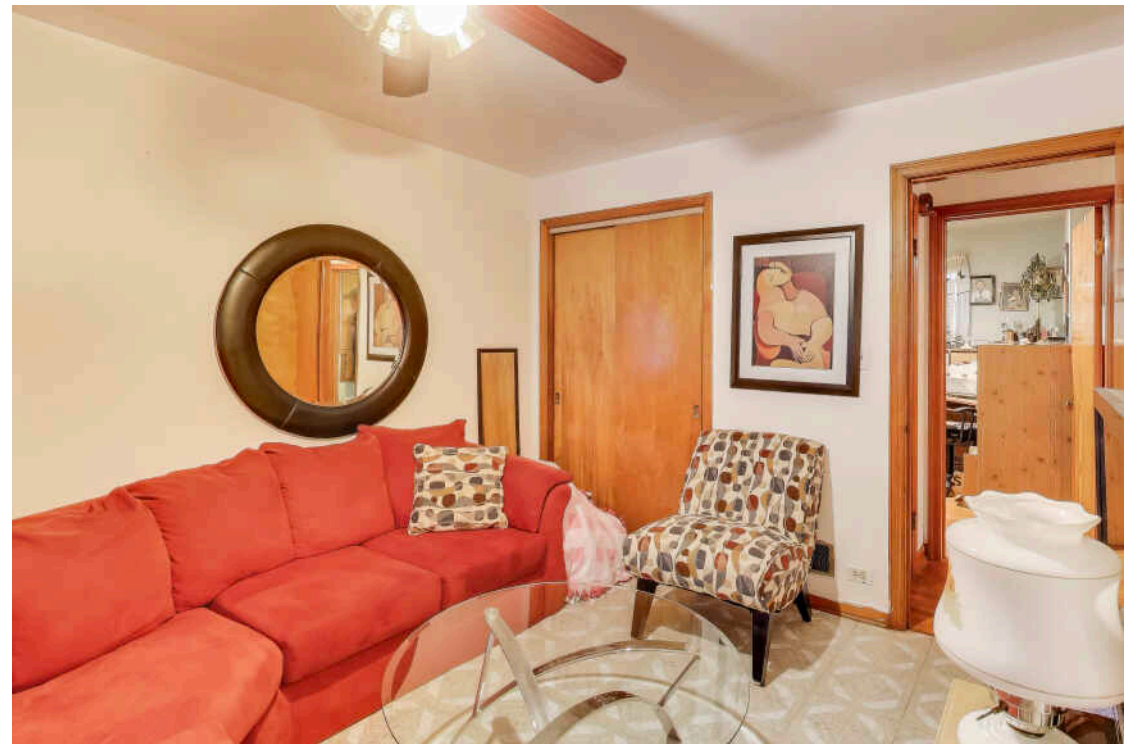
2 BATH

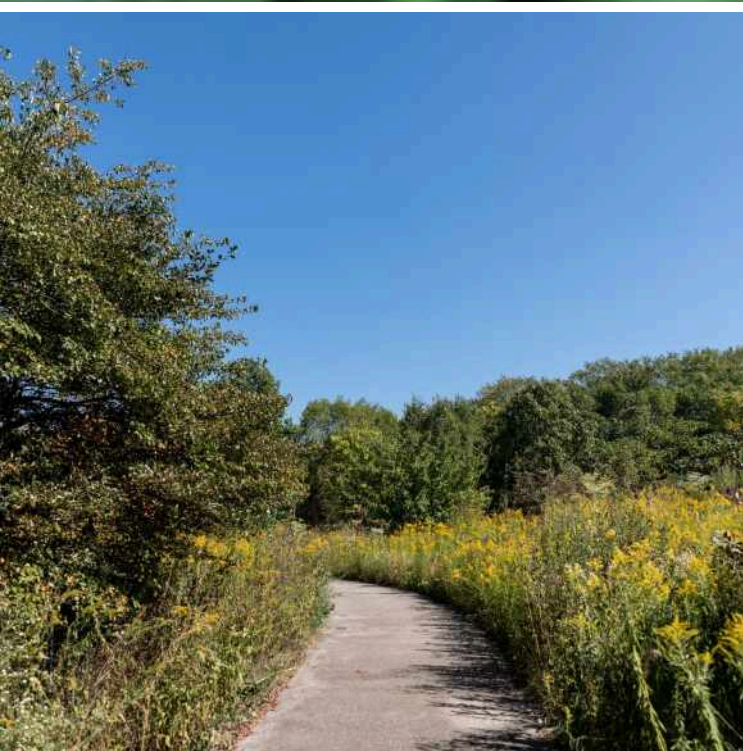
TAXES: \$7,604

CORNER, BRICK RANCH!

Welcome to this solid 3-bedroom, 2-bath corner brick ranch - a longtime family home with great flow and wonderful possibilities. This property offers timeless curb appeal and a functional layout that's ready for your personal touch. Enjoy hardwood floors, a spacious living and dining area, with plenty of natural light. The finished basement provides additional living space, perfect for a family room, home office, or guest area. You'll find a 2-car attached garage and a newer roof for peace of mind. With some updating, this home could truly shine!





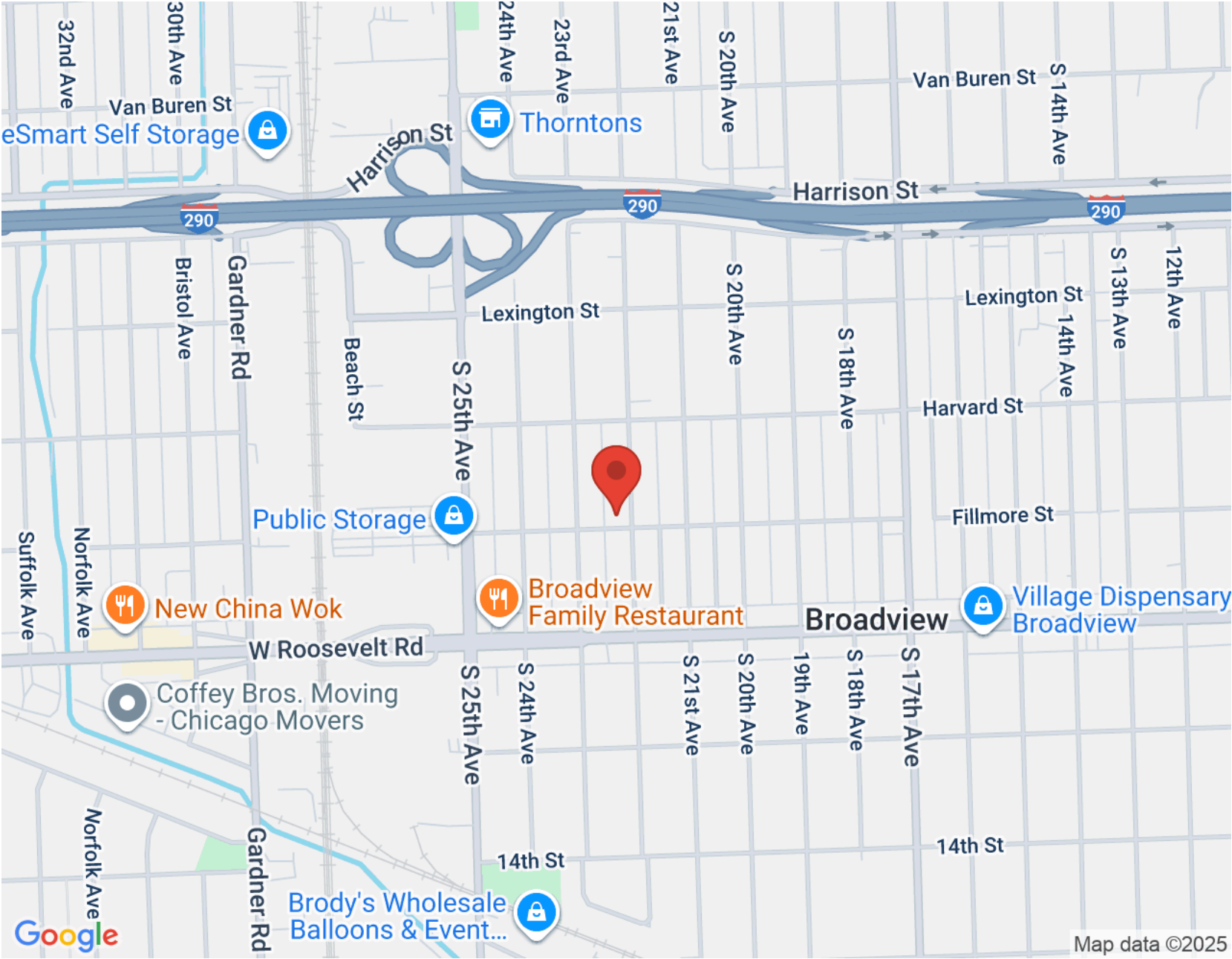


SITUATED JUST 13 MILES WEST OF DOWNTOWN CHICAGO, **BROADVIEW** IS A WELCOMING VILLAGE THAT OFFERS BOTH CONVENIENCE AND COMMUNITY.

With its central location near major highways like I-290 and I-294, residents enjoy easy access to the city, O'Hare and Midway airports, and the broader western suburbs.

Broadview combines suburban comfort with practical amenities, featuring local shops, restaurants, and parks that create a close-knit feel. The village is also home to several community programs and events that foster a strong neighborhood spirit.

Known for its accessibility and friendly atmosphere, Broadview provides a balanced lifestyle—perfect for those who want the benefits of suburban living with quick connections to everything Chicagoland has to offer.



NOTES _____



ALLISON MCGOWAN, REALTOR®

773.556.6784

ALLISONM@ATPROPERTIES.COM

ALLISONDMCGOWAN.COM/



All specifications, features, designs, price, assessments, taxes and materials are subject to change without notice. Depicted floor plans and architectural renderings are only an artist's impression.

