

2033 N BISSELL STREET #1
LINCOLN PARK

@properties

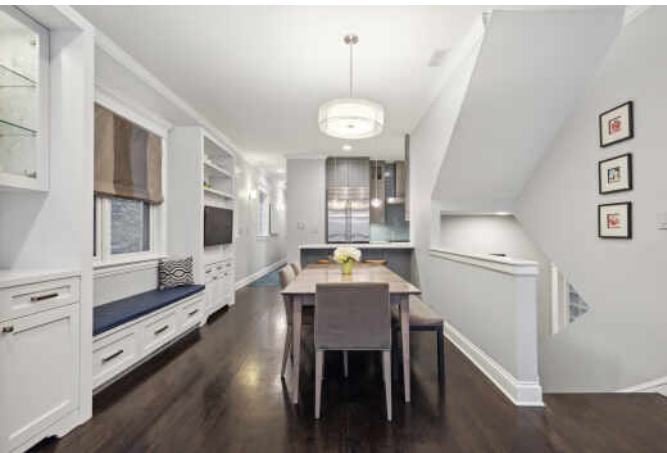
CHRISTIE'S
INTERNATIONAL REAL ESTATE

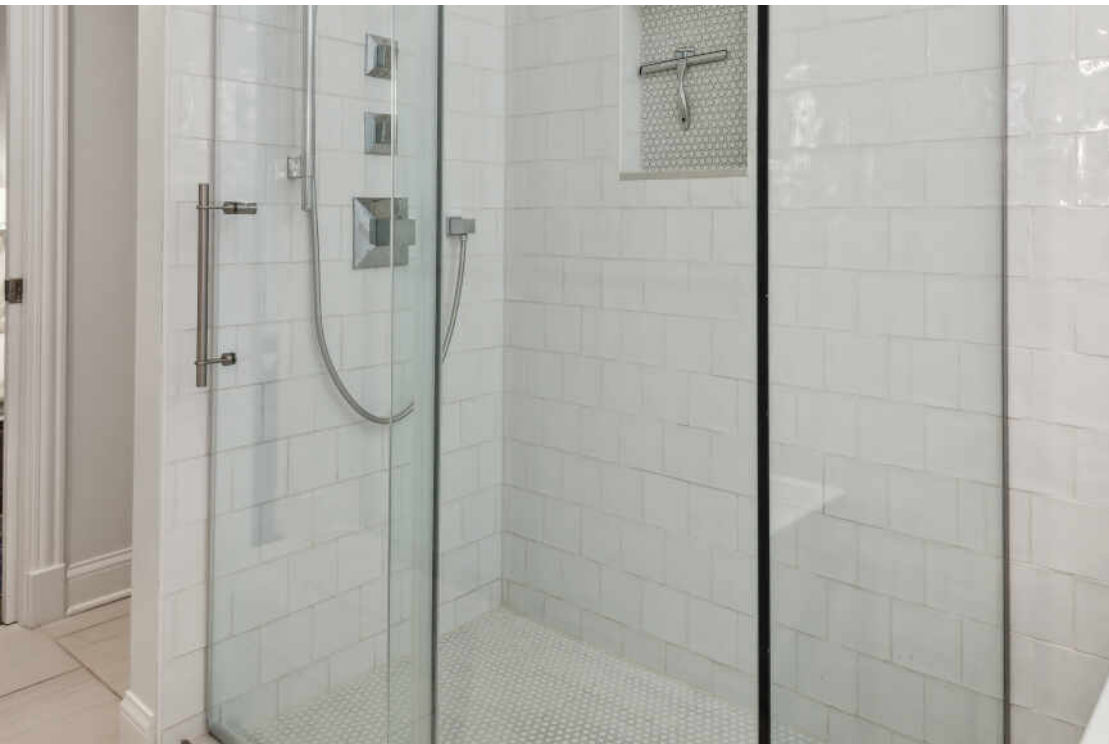


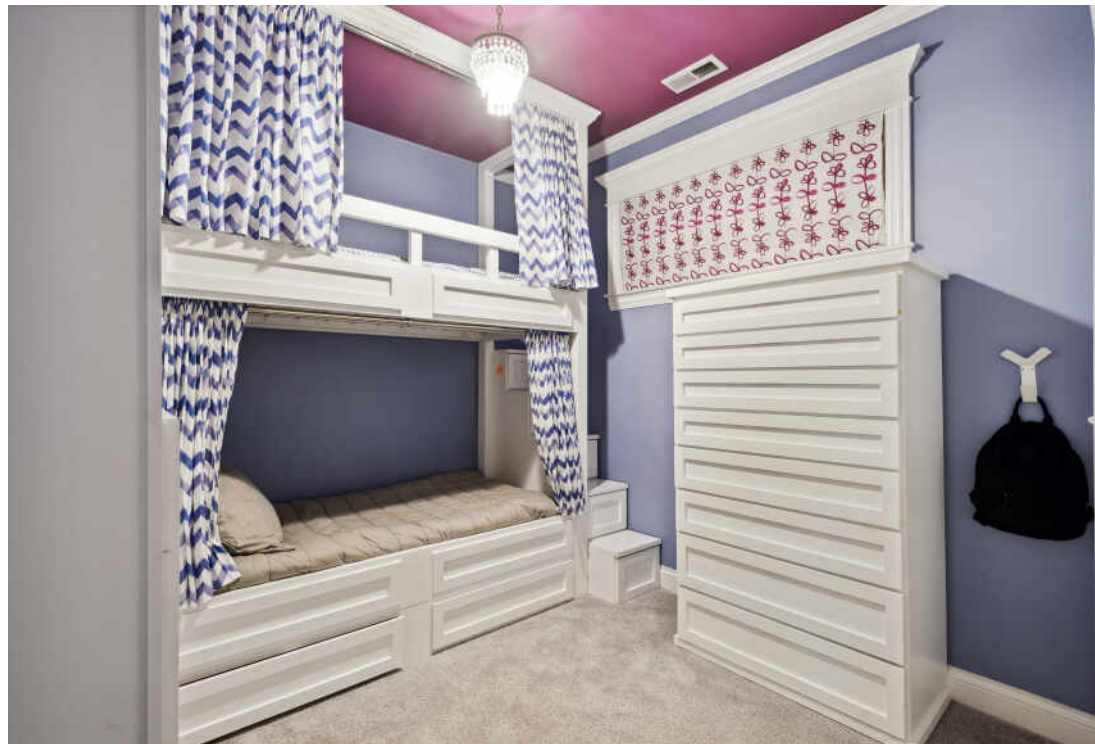
TAXES: \$12,897
ASSESSMENTS: \$206 / MONTH

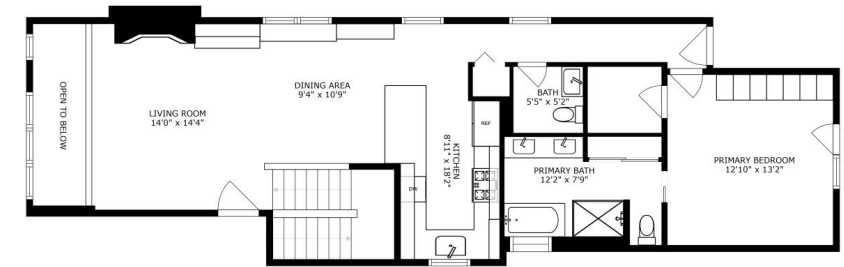
PERFECT LINCOLN PARK HOME

- Completely updated 3 bed 2.1 bath duplex down
- Perfect Lincoln Park location on tree lined Bissell street
- Formal living room with wood burning fireplace, built-ins, separate dining area also with custom built-ins
- Completely remodeled kitchen with highest end finishes including custom cabinets, quartz counter tops, sub-zero fridge, wolf stove, and professional hood
- Spacious primary suite with spectacular wall of built-in cabinets, in addition to walk in closet
- Spa like primary bath with soaking tub, separate shower with custom glass door, heated floor, dual vanities and great closet
- Hardwood throughout first floor
- Enormous family room in lower level with fireplace and built-in office area
- Large laundry closet with side by side washer and dryer
- Two generously sized bedrooms and updated full bath in lower level
- Interior designed finishes throughout the home
- Custom lighting throughout
- New private roof top deck over newly built garage features composite decking, oversized pergola, built-in heat lamps and outdoor fan
- One garage parking spot and extra storage closet included
- Steps to Armitage Ave shops and restaurants
- Close to transportation including brown and red lines, buses, Oz Park, DePaul campus, Trebes Park, Trader Joes and Whole foods
- Oscar Mayer elementary and Lincoln Park High School.

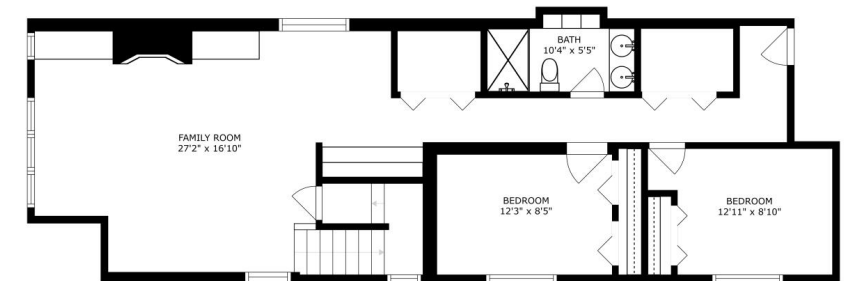








SIZES AND DIMENSIONS ARE APPROXIMATE, ACTUAL MAY VARY.



SIZES AND DIMENSIONS ARE APPROXIMATE, ACTUAL MAY VARY.



LINCOLN PARK RESIDENTS HAVE IT ALL – FROM THE ARTS TO ITS FAMED ZOO – RIGHT IN THEIR BACKYARD.

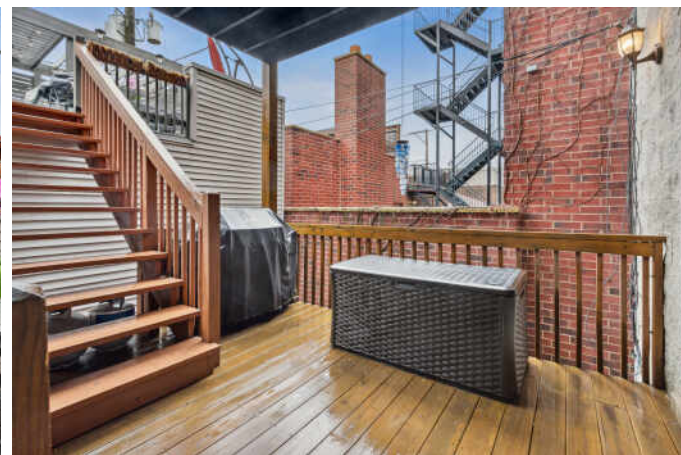
The neighborhood includes quiet tree-lined residential blocks, DePaul University, and two major museums in addition to the Lincoln Park Zoo, one of the country's oldest zoos. There's also a wide array of entertainment, eateries, and hotspots.

An evening in Lincoln Park might include seeing a play at the acclaimed Steppenwolf Theatre and dining at a Michelin-rated restaurant or a quaint neighborhood café. Sports fans will find as many dive bars with the game on as foodies will find fine-dining restaurants with al-fresco seating.

Lincoln Park is just as delightful by day. Residents are close to the lakefront and North Avenue Beach, parks, farmers markets, festivals, and countless shops, ranging from upscale boutiques on Armitage to larger retailers at the Clybourn Corridor.

Housing stock ranges from smaller townhomes and vintage condominiums to rehabs and new construction. Buyers around DePaul University can find loft condominiums in converted factories and warehouses. On its eastern edge, Lincoln Park features beautiful vintage brownstones along with high-rises with breathtaking views of the lake, park, North Pond Nature Sanctuary, and city skyline.

Located just two miles from downtown, Lincoln Park offers residents a quick commute to work. Public transportation abounds, with the CTA's Brown and Red lines serving the neighborhood in addition to several bus routes and Lake Shore Drive.



NOTES



ALICE BERGER

312.343.8288

773-432-0200

ALICE@ATPROPERTIES.COM



CHRISTIE'S
INTERNATIONAL REAL ESTATE

2033BISSELL1.INFO