

2034 MANICO COURT #101
CREST HILL





ROOM DIMENSIONS

LIVING ROOM : 14' × 19'

DINING ROOM : 12' × 10'

KITCHEN : 12' × 10'

PRIMARY BEDROOM : 12' × 17'

WALK-IN CLOSET : 6' × 8'

SECOND BEDROOM : 10' × 13'

LAUNDRY ROOM : 4' × 10'

2 BEDROOM

2 BATH

TAXES: 3,524

ASSESSMENTS: 202

WELCOME HOME TO 2034 MANICO CT #101

****Freshly Painted 1st-Floor Condo with Private Garage & Covered Porch****

Welcome home to this beautifully refreshed 2-bedroom, 2-bathroom first-floor condo - offering effortless living in a convenient and well-kept community. Recently freshly painted throughout, this move-in-ready unit features a bright, open layout perfect for both everyday comfort and easy entertaining.

Step inside to a spacious living area that flows right out to a charming covered porch—ideal for morning coffee, relaxing afternoons, or enjoying the outdoors rain or shine.

The primary suite is a true retreat, complete with a large walk-in closet and it's own private bathroom for added convenience. A second bedroom and full hall bath make this home perfect for guests, a roommate, or a dedicated office space.

Additional features include:

1-car detached garage, 1 assigned parking space, In-unit laundry, Convenient first-floor access.

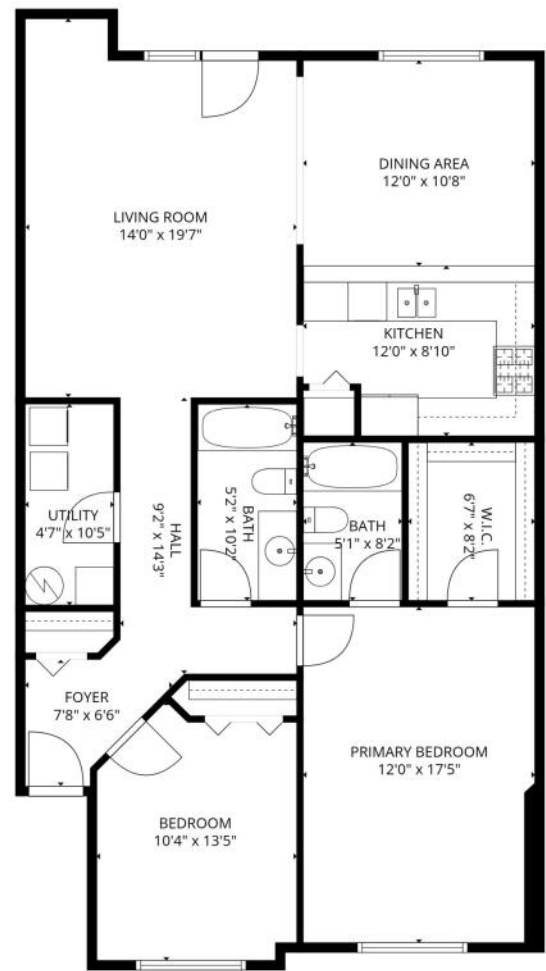
Perfectly located near shopping, dining, parks, major roadways, and within Lockport High School boundaries - this condo offers comfort, simplicity, and value all in one.





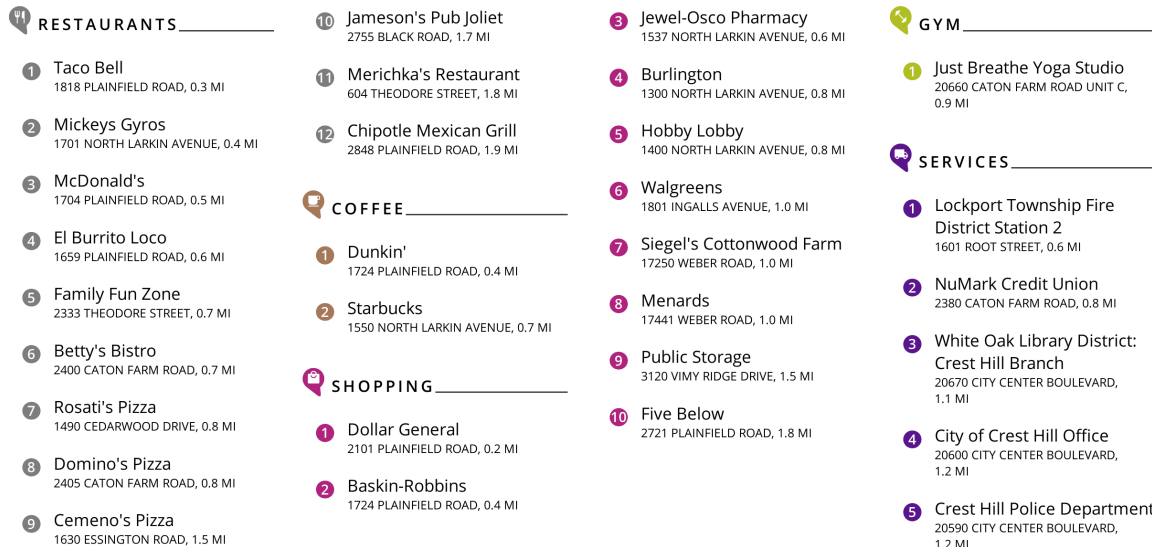






TOTAL: 1193 sq. ft
 1st floor: 1193 sq. ft
 EXCLUDED AREAS: WALLS: 76 sq. ft

SIZES AND DIMENSIONS ARE APPROXIMATE, ACTUAL MAY VARY.

[illegible]



RACHAEL RAE GISH

(815) 791-3487

RACHAELRAE@ATPROPERTIES.COM



All specifications, features, designs, price, assessments, taxes and materials are subject to change without notice. Depicted floor plans and architectural renderings are only an artist's impression.

