

2041 CHATHAM DRIVE

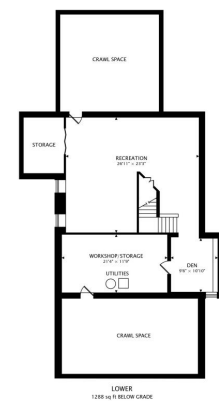
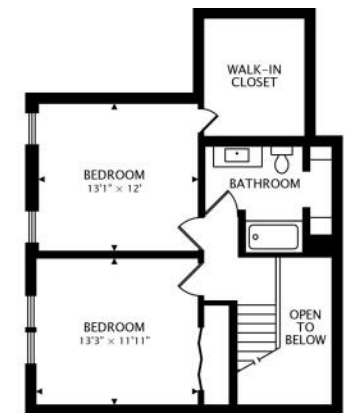
WHEATON



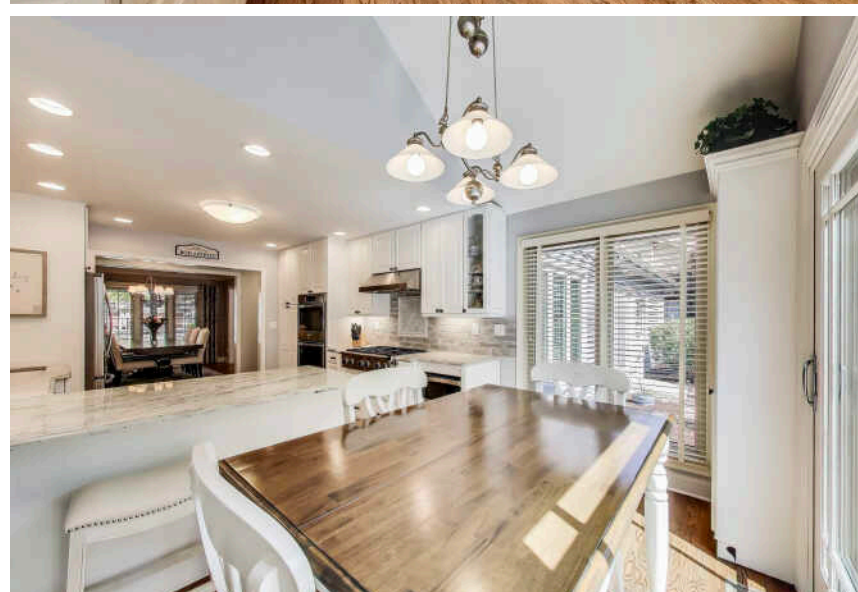


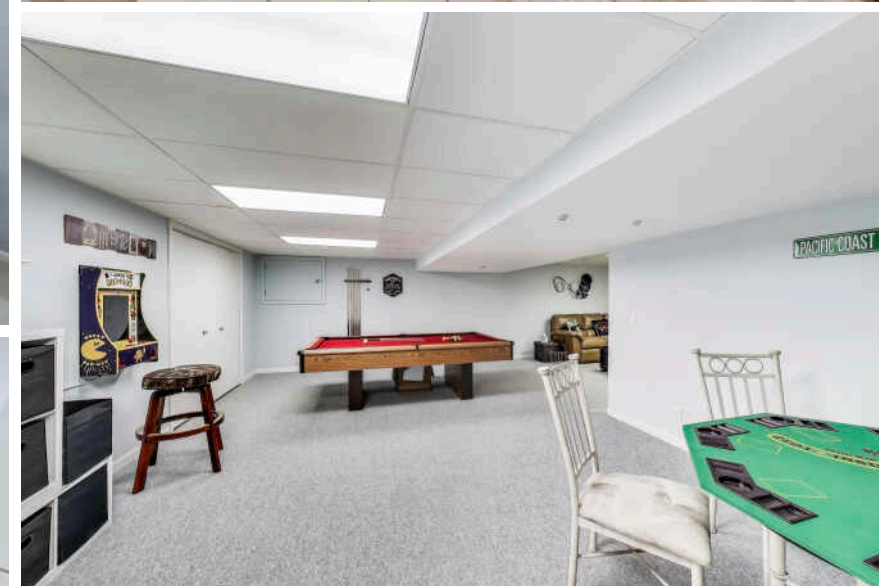
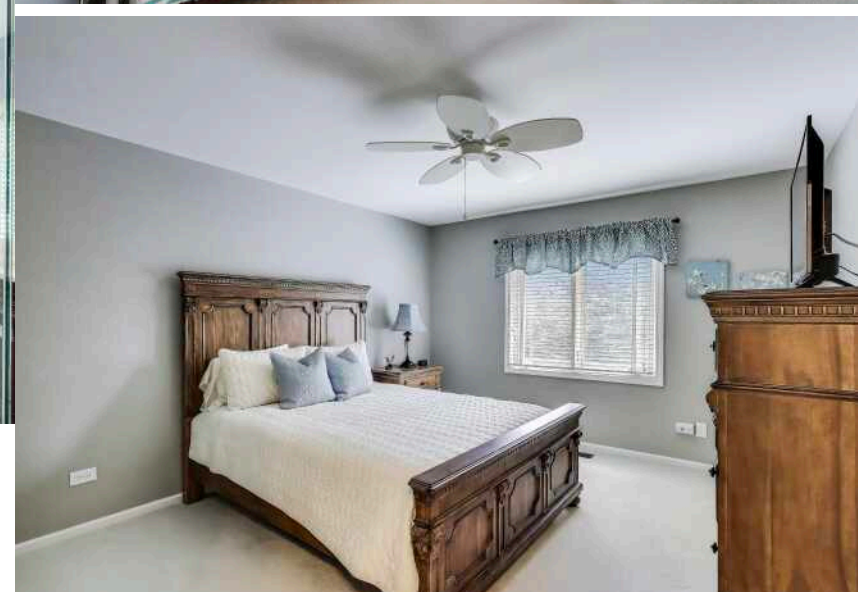
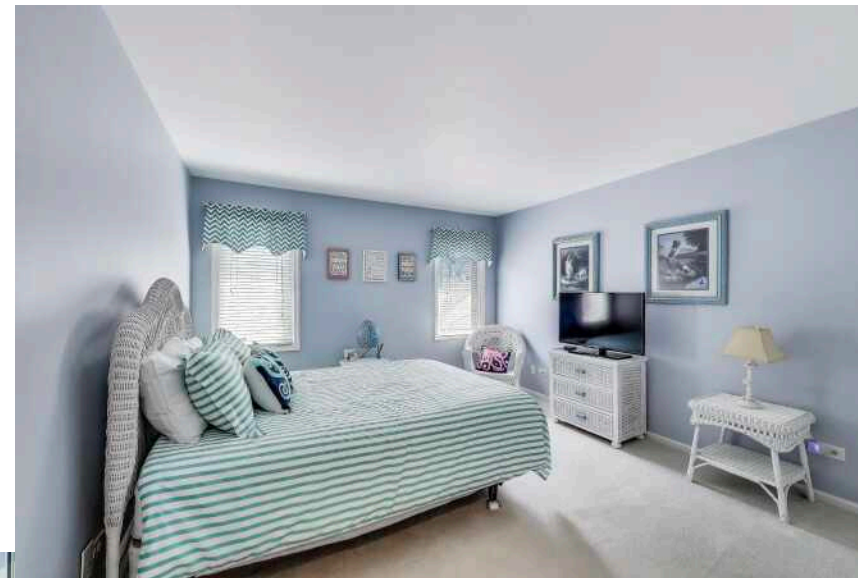
4 BEDROOM
2.1 BATH
TAXES: \$12,060

LOOK NO FURTHER! Spectacular Stonehenge home boasting a total custom remodel over the last 7 years. Step inside the Foyer and be impressed by the recently remodeled Oak staircase, white painted custom Newell posts, and square spindles. Gorgeous solid Oak hardwood flooring runs through the Foyer, Hallway, Living room, Dining room, Bedroom 2, Kitchen, Breakfast area, and Family room. Sought-after 1st FLOOR PRIMARY BEDROOM SUITE features a Euro Spa Bathroom with multiple shower heads, immersing you in total relaxation. Adjacent to the Primary Suite is a Sitting Room (possible Office) with sliding doors leading out to the patio and a magnificent prof landscaped yard. A showcase Designer Kitchen awaits the most demanding of Chefs. Upscale custom cabinetry with built-in specialty cabinets accented with detailed millwork and leaded glass fronts outline the Kitchen. Complimenting the cabinetry is porcelain tile backsplash with a stand-out inlay above the Cooktop. SS Professional appliances add to the professional look of this magnificent kitchen. 36" Dacor Cooktop, a high-power prof Hood, 2 Dacor Double Ovens, a KitchenAid dishwasher and an LG counter-depth French door refrigerator. .Enjoy the amazing 3 season Florida room featuring white painted custom millwork, tongue and groove shiplap outlining the ceilings and the walls. A wonderful, finished basement will become the favorite hangout for watching movies, So many "NEWS" in this home. Truly impressive and absolutely in PRISTINE CONDITION! This home has fabulous curb appeal. The gardens, landscaping and fenced-in yard are A+. Welcome Home!











WHEATON HAS RACKED UP MORE THAN ITS SHARE OF AWARDS.

The affluent community ranks among the “top 25 highest earning towns” and one of the best places to live by *Money* magazine.

The Wheaton Public Library is regularly ranked among the top in the nation. The Wheaton Park District, with 52 parks and more than 800 acres, has won several National Gold Medal Awards for Excellence from the National Recreation and Park Association. The park district includes the 135-acre Lincoln Marsh Natural Area with over 300 plant and animal species; the Cosley Zoo, which houses more than 200 animals; and the 27-hole Arrowhead Golf Club.

Wheaton is home to the prestigious Chicago Golf Club, the oldest 18-hole course in the country and host of numerous U.S. Open and U.S. Amateur Golf Championships, and the Cantigny Park and Golf Course, which includes a championship golf course and two museums. The county also owns the Danada Forest Preserve and Equestrian Center, once an estate and home to a Kentucky Derby winner.

The community has seen considerable residential and business development including its landmark, the Wheaton Center, a six-building apartment complex downtown that includes two 20-story high-rise buildings.



NOTES

[illegible]



SANDY HUNTER

630.248.4524

SANDYHUNTER@ATPROPERTIES.COM

WWW.SANDYHUNTERHOMES.COM



All specifications, features, designs, price, assessments, taxes and materials are subject to change without notice. Depicted floor plans and architectural renderings are only an artist's impression.

