

204 N MIDDLETON AVENUE
PALATINE





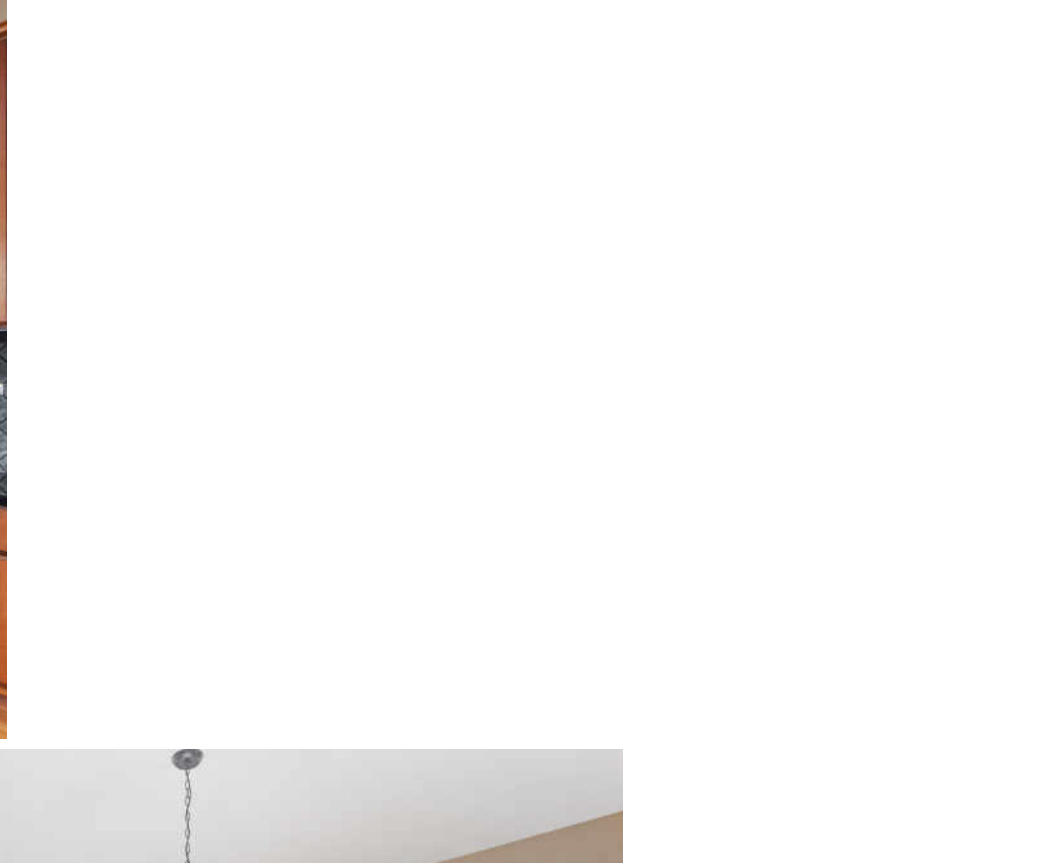
ROOM DIMENSIONS

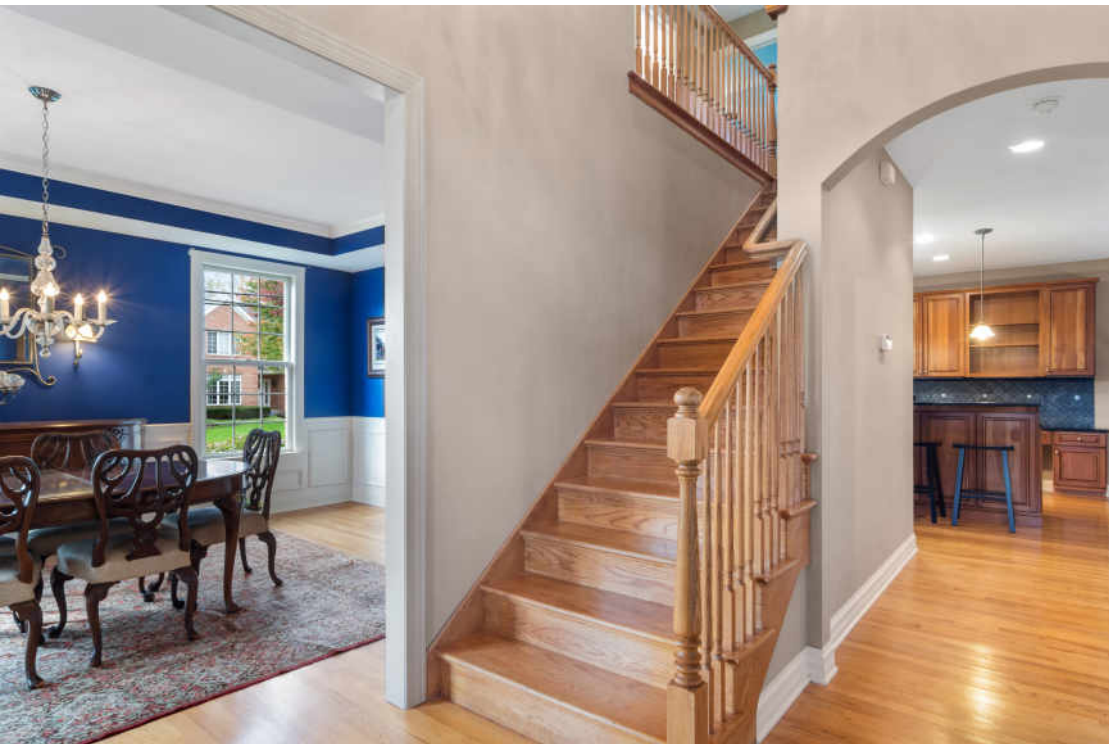
- FOYER : 10' × 8'
- LIVING ROOM : 13' × 10'
- DINING ROOM : 18' × 13'
- FAMILY ROOM : 19' × 16'
- KITCHEN : 20' × 17'
- EATING AREA : 15' × 14'
- MASTER BEDROOM : 19' × 13'
- SECOND BEDROOM : 13' × 13'
- THIRD BEDROOM : 13' × 13'
- FOURTH BEDROOM : 13' × 10'
- RECREATION ROOM : 24' × 12'
- BAR : 18' × 10'
- STORAGE : 19' × 16'
- LAUNDRY ROOM : 10' × 6'
- MUD ROOM : 8' × 6'

4 BEDROOM
2.2 BATH
TAXES: \$14,374.79

PROPERTY INFORMATION & DETAILS

Custom built home with all the livable space one desires. Luxury kitchen with not one, but two islands. Endless amount of custom cherry cabinets and counter space; perfect for entertaining. Breakfast islands with extra seating & beverage refrigerator, plus additional island with extra sink. Main level open concept to vaulted family room, gleaming hardwood floors ('18), gas fire place & skylights. Endless windows across back of home, offering ample natural sunlight. Hardwood floors throughout main level. Separate formal dining room and office with french doors and new hardwood floors ('18). Master suite with a luxury private bath offering a soaking tub, walk in shower and you will be wowed by this his/her custom California master closet! Three additional bedrooms with custom organized closets, plus full bath and laundry, complete this second level. Don't forget the full finished basement ('12) offering even more livable space, half bath, dry bar and large storage space. Private backyard surrounded by mature trees. Sidewalk community, close to parks, schools and downtown Palatine. Additional updates include: tankless water heater ('18), furnace ('18), A/C ('05), roof ('05), lawn sprinkler ('10), whole house generator ('11).











THE VILLAGE OF **PALATINE** HAS MASTERED THE ART OF BALANCE.

The growing community has a healthy mix of residents who enjoy its friendly suburban lifestyle and businesses that fuel the local economy.

The village embraces growth to support a wealth of amenities and services. The Palatine Park District has 28 parks, an 18-hole golf course and a variety of classes from fitness and sports to arts and crafts. Bicycle riders enjoy the village's scenic four-mile trail through parks, residential areas and nearby Deer Grove Forest Preserve.

Palatine's downtown business district is both charming and self-sufficient for residents. Restaurants include a mix of local favorites – from classic Italian eateries to upscale breweries – as well as a variety of local bars. The village hosts several street festivals and a popular farmer's market.

The Palatine Public Library is rated among the best in the country, and public schools here are highly rated. High school students attend Palatine High School and William Fremd High School. The community also has several private schools and is home to Harper Community College.

Commuters have access to the Chicago Loop with the Palatine Metra station and I-90. The nearby Chicago Executive Airport offers private and corporate aircraft services.



AMY DIAMOND

847.497.0230

AMY@DEALWITHDIAMOND.COM

DEALWITHDIAMOND.COM



204MIDDLETON.INFO