



2051 CHURCHILL LANE  
HIGHLAND PARK



@properties | CHRISTIE'S  
INTERNATIONAL REAL ESTATE

LP LUXURY  
PORTFOLIO  
INTERNATIONAL

2051 CHURCHILL LANE • HIGHLAND PARK



JODY DICKSTEIN BROKER

847.651.7100 mobile  
847.892.4800 office  
jodydickstein@atproperties.com  
Luxury North Shore Broker



MICHAEL DICKSTEIN BROKER

847.946.7600 mobile  
847.892.4800 office  
michaeld@atproperties.com  
TheDicksteinGroup.com



2051 CHURCHILL LANE • HIGHLAND PARK





2051 CHURCHILL LANE

ROOM DIMENSIONS

Living Room .....	25'x16'
Family Room .....	31'x21'
Dining Room .....	16'x16'
Kitchen .....	25'x13'
Primary Bedroom .....	22'x16'
Second Bedroom .....	20'x12'
Third Bedroom .....	20'x12'
Fourth Bedroom .....	16'x16'

FEATURES

Effortless Elegance in a Private, Park-Like Setting: This stunning 6,000 sq ft home has been beautifully updated with designer touches throughout-straight out of the pages of a magazine. Nestled on a professionally landscaped acre surrounded by towering trees, this property offers unmatched privacy and a serene setting for both grand-scale entertaining and everyday luxury living. The heart of the home is the gourmet kitchen, a chef's dream featuring custom cabinetry, top-of-the-line appliances including Sub-Zero, Wolf range and hood, warming drawer, built-in Miele coffee system, an oversized center island, and a spacious walk-in pantry. Open to the expansive family room, this area is perfect for gathering and entertaining. A formal dining room and newly custom outfitted library add charm and elegance, while the oversized mudroom/laundry area, first-floor office, and a convenient rear staircase offer functionality and flow. Upstairs, the primary suite is a true retreat with two custom walk-in closets, an additional shoe and handbag closet, and a spa-inspired bathroom featuring a steam shower, heated floors, dual vanities, and a dedicated makeup area. The additional bedrooms are generously sized, each with custom walk-in closets and ensuite or Jack & Jill baths. A versatile bonus room with its own full bath and staircase is ideal as a media room, playroom, or private guest suite. The finished lower level boasts an industrial-chic design, providing a spacious and stylish area for indoor recreation. Outside, enjoy the peaceful backyard oasis with an expansive patio, perfect for alfresco dining or relaxing under the covered pergola in the Jacuzzi spa.



JODY DICKSTEIN BROKER

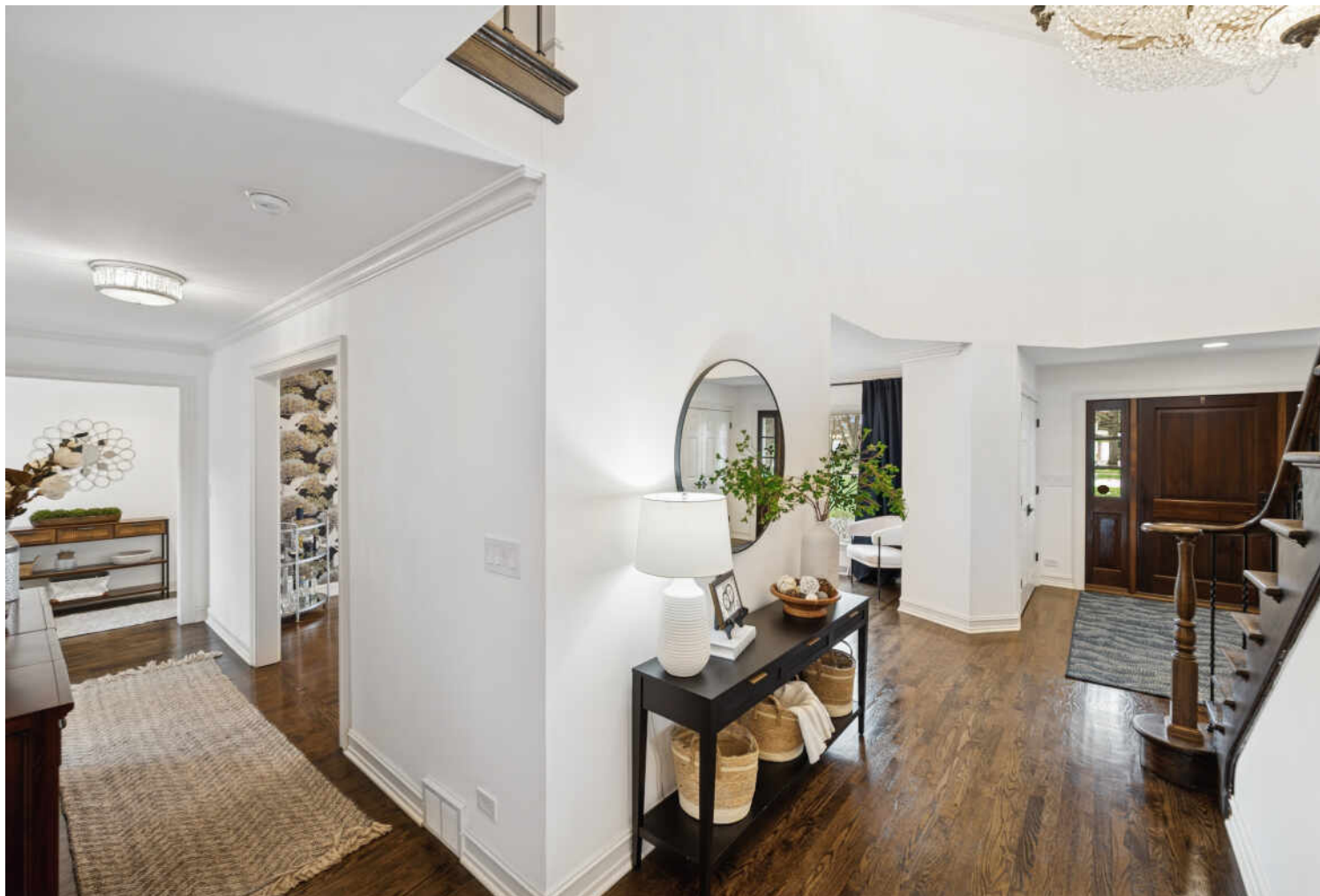
847.651.7100 mobile  
847.892.4800 office  
jodydickstein@atproperties.com  
Luxury North Shore Broker



MICHAEL DICKSTEIN BROKER

847.946.7600 mobile  
847.892.4800 office  
michaeld@atproperties.com  
TheDicksteinGroup.com





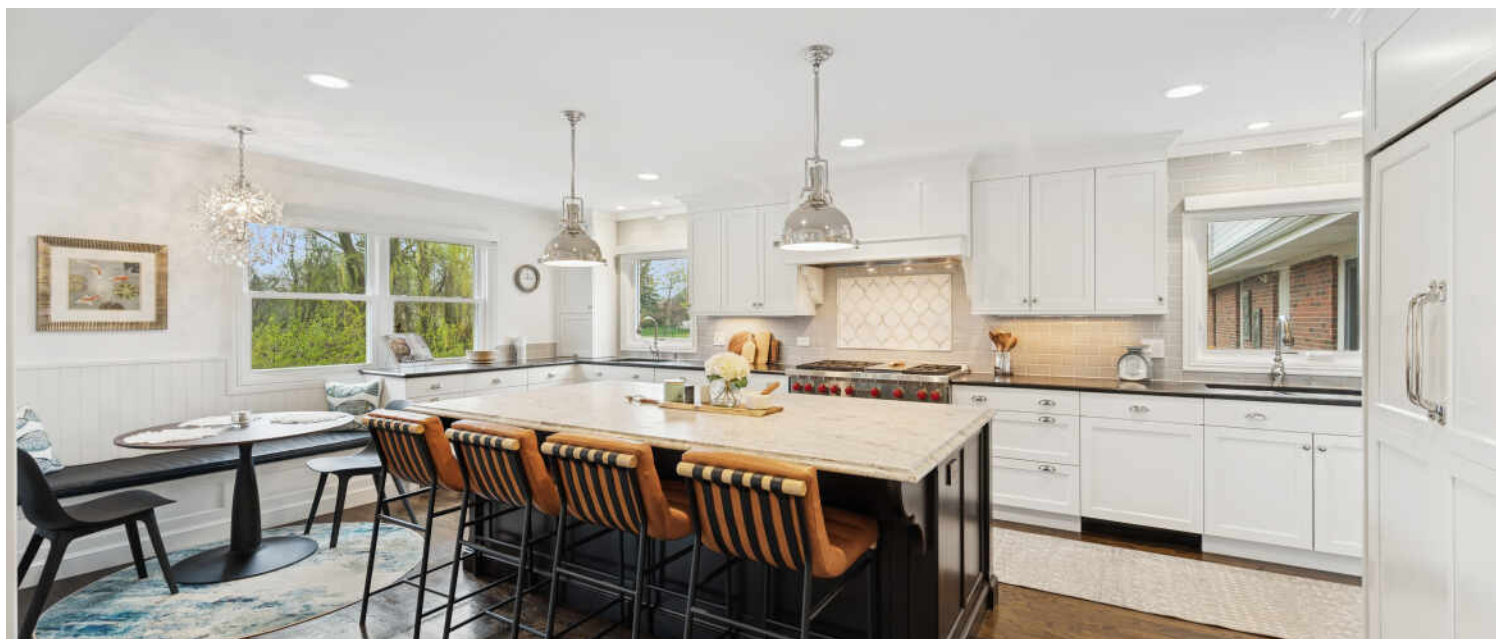
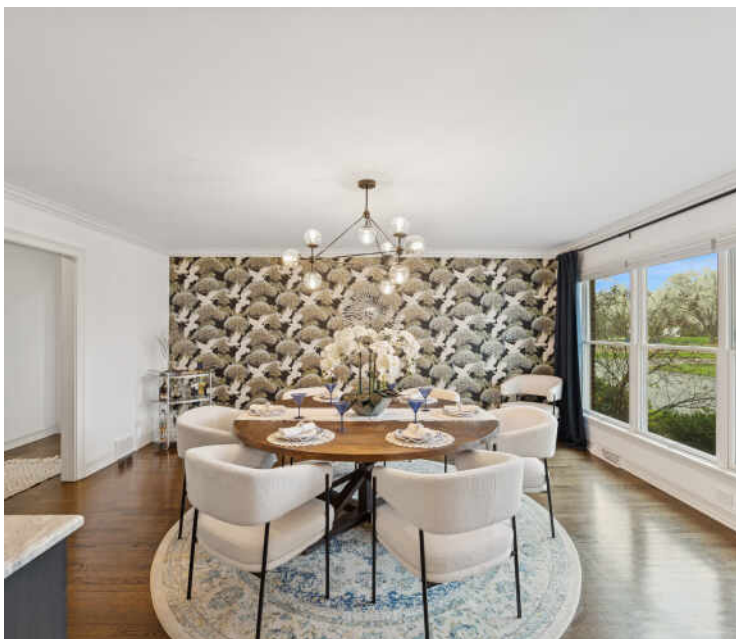
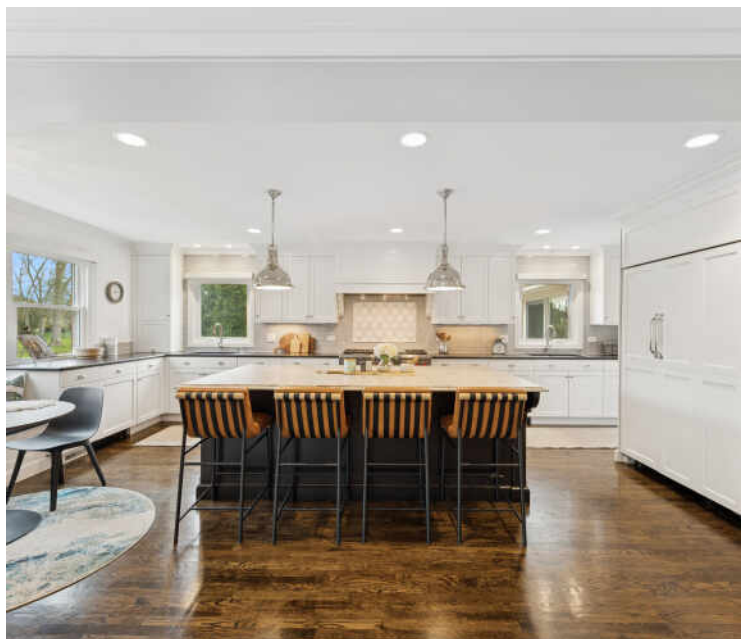
















































## YOU HAD ME AT RAVINIA – YET THERE’S SO MUCH MORE TO LOVE ABOUT HIGHLAND PARK.

*Locals love the community's vibrant business district and popular cultural attractions including Ravinia – the North Shore's one-of-a-kind outdoor music festival.*

Located 23 miles north of downtown Chicago, Highland Park is known for its vibrant downtown business district, abundant recreational facilities, and world-class amenities.

The city is home to several landmarks, including homes designed by Frank Lloyd Wright. Highland Park also created the first community land trust in Illinois to develop and preserve high-quality affordable housing for residents.

High-end homes in Highland Park range from custom lakefront mansions to multi-million-dollar contemporary estates. Mid-century moderns and in-town bungalows are plentiful, while a number of luxury condominiums offer maintenance-free living close to downtown shops, restaurants, and commuter train stations.

Residents enjoy two public beaches and the North Shore Yacht Club, a not-for-profit membership organization for sailors, kayakers, power boaters, and stand-up paddle boarders. Downtown Highland Park thrives year-round thanks to an eclectic mix of businesses including local restaurants, national retailers, and upscale boutiques.

Highland Park shines brightest in the summertime, when the sprawling outdoor Ravinia Festival welcomes the Chicago Symphony Orchestra and a diverse lineup of popular musicians. Ravinia attracts concert-goers from near and far, including locals and city-dwellers who can hop on the Metra train that conveniently stops at the festival gates.







