



2055 LAKE SHORE DRIVE
LONG BEACH



2055 LAKE SHORE DRIVE · LONG BEACH

@properties | CHRISTIE'S
INTERNATIONAL REAL ESTATE

LP LUXURY
PORTFOLIO
INTERNATIONAL



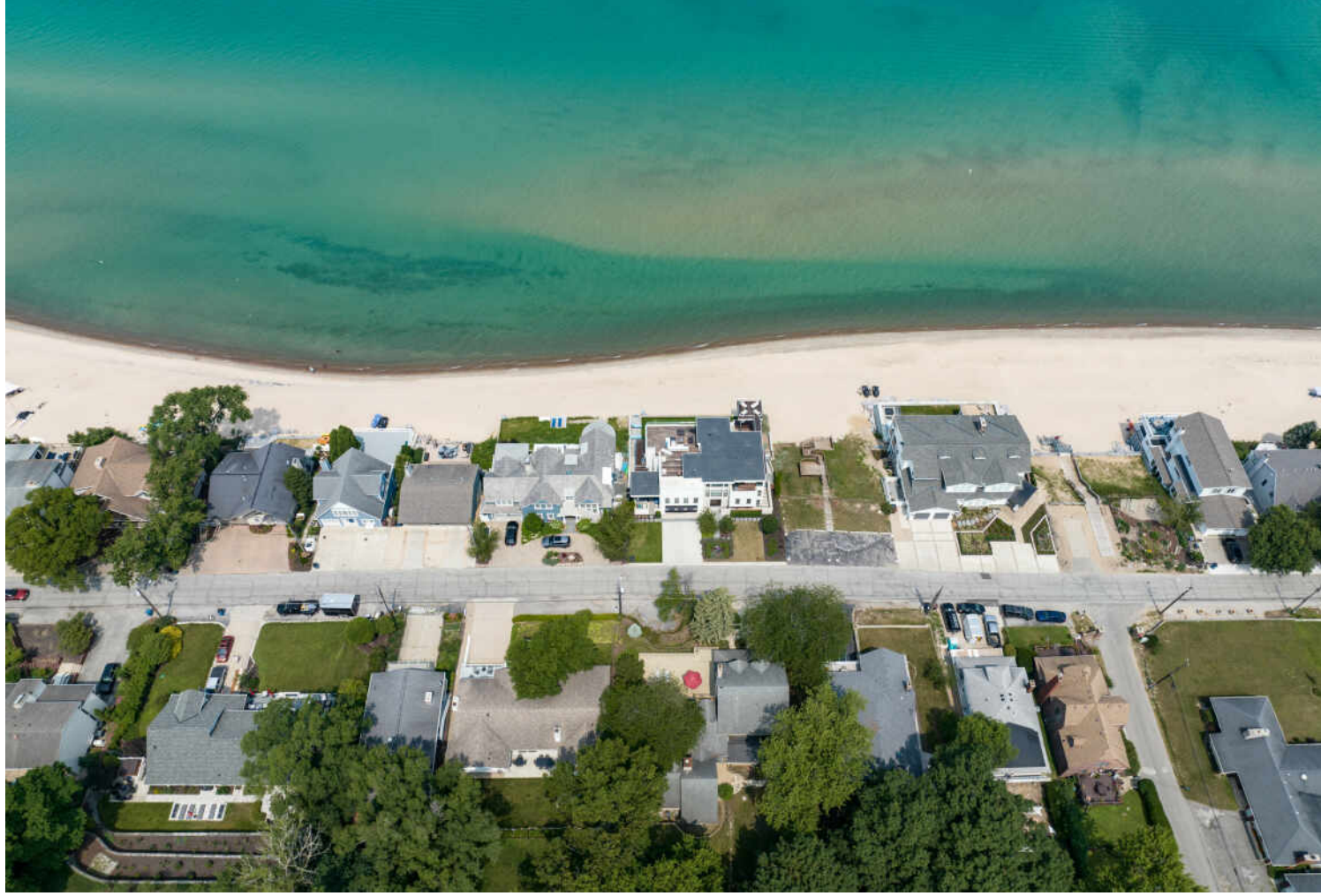
MICKY GALLAS BROKER

219.861.6012 mobile
219.874.7070 office
mickygallas@atproperties.com

ME MICKY
GALLAS
GROUP

2055 LAKE SHORE DRIVE • LONG BEACH





2055 LAKE SHORE DRIVE LAKE LIVING ON LAKE SHORE DRIVE! PRIDE OF
GENERATIONAL OWNERSHIP TRULY SHOWS IN THIS 4 BEDROOM, 4.5 BATHROOM 2
STORY HILLSIDE HOME WITH BEAUTIFUL VIEWS OF LAKE MICHIGAN.

ROOM DIMENSIONS

Living Room	15.10'x28.00'
Dining Room	12.11'x13.30'
Kitchen	8.70'x15.80'
Primary Bedroom ...	15.30'x16.60'
Second Bedroom	14.11'x13.50'
Third Bedroom	14.11'x13.30'
Fourth Bedroom	11.60'x12.11'
Sun Room	8.1'x25.5'
Gathering Room	14.1'x12.7'
Office	11'x10.11'
Sleeping Space	9.11'x13.3'

FEATURES

Step inside to the spacious Sun Room perched above Lake Shore Drive. Living Room w/ a wood burning fireplace and gorgeous hardwood floors. Formal Dining Room w/ views of the rare to find backyard on Lake Shore. Kitchen includes stainless steel appliances, beautiful cabinetry, granite countertops, and coffee bar.

- Gathering Room with sliders out to the back patio and sliders to the massive front sun deck, perfect to unwind after a day at the beach or entertain your guests.
- Main level secluded Primary Bedroom w/ a shared marble gas fireplace w/ the Office/Den.
- Double walk-in closets and an en suite Bathroom w/ a soaking tub and glass shower.
- 3 additional Bedrooms upstairs.
- Deep 1 car garage w/ extra room for your golf cart.
- Plenty of basement storage for your beach toys.
- Want lake views in Long Beach? This is the one!



MICKY GALLAS BROKER

219.861.6012 mobile
219.874.7070 office

mickygallas@atproperties.com





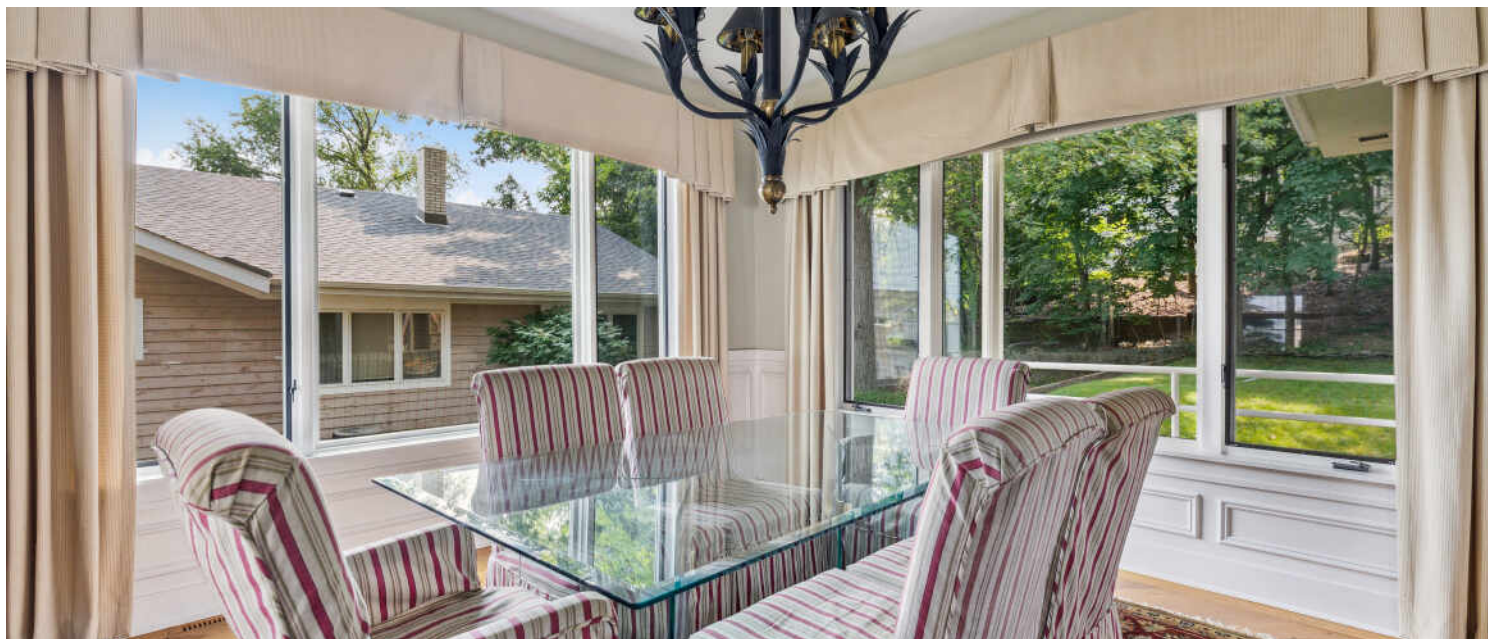
LIVING ROOM



LIVING ROOM



LIVING ROOM



DINING ROOM



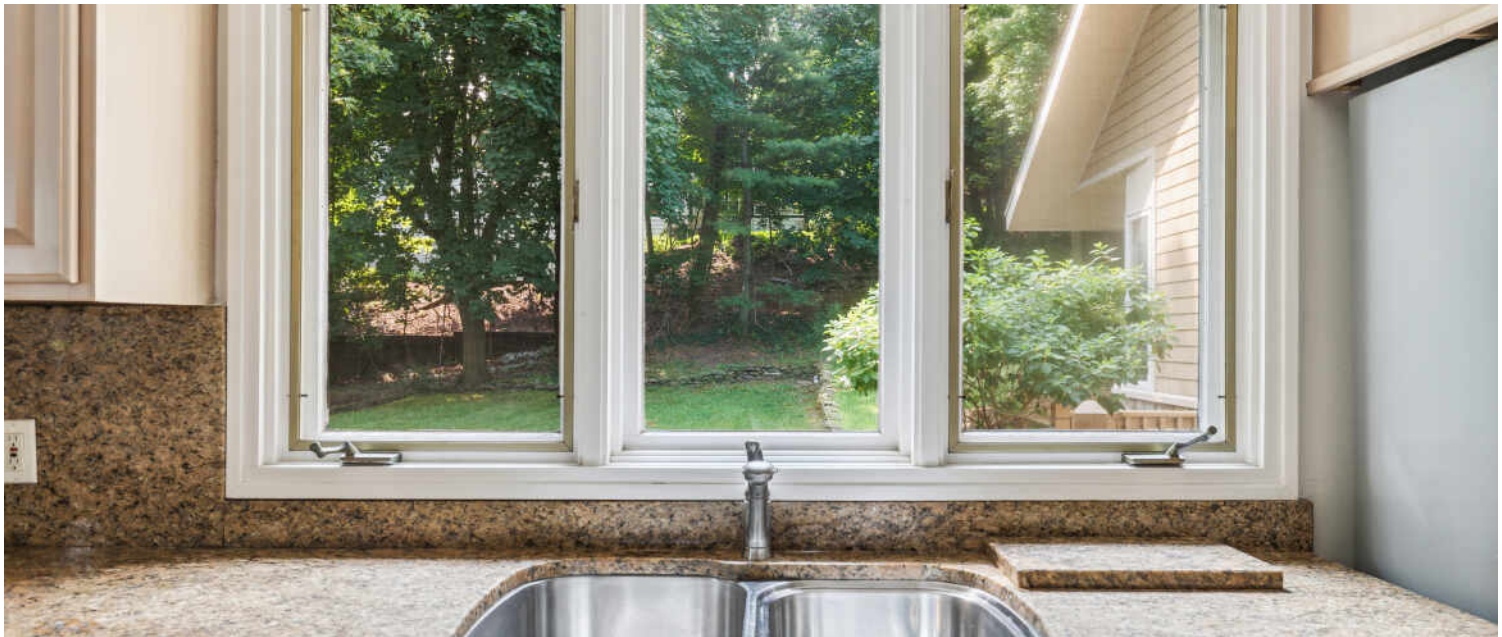
DINING ROOM



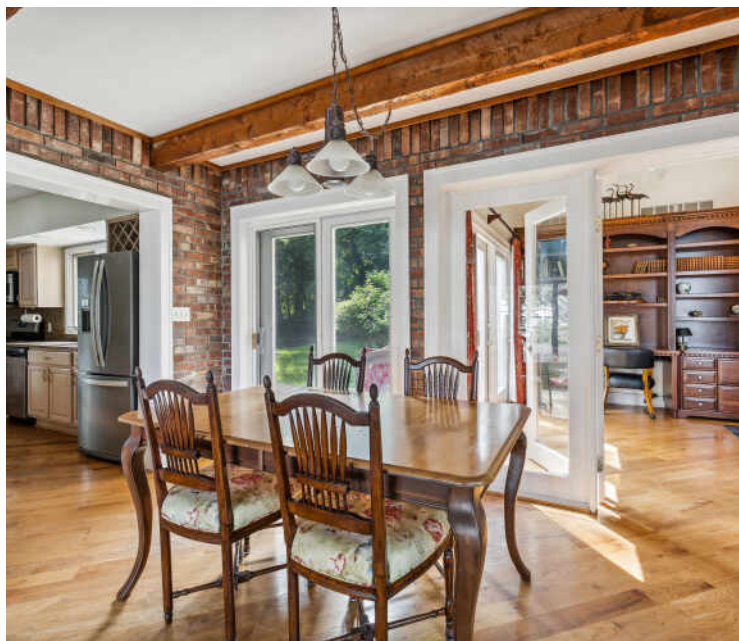
KITCHEN



KITCHEN



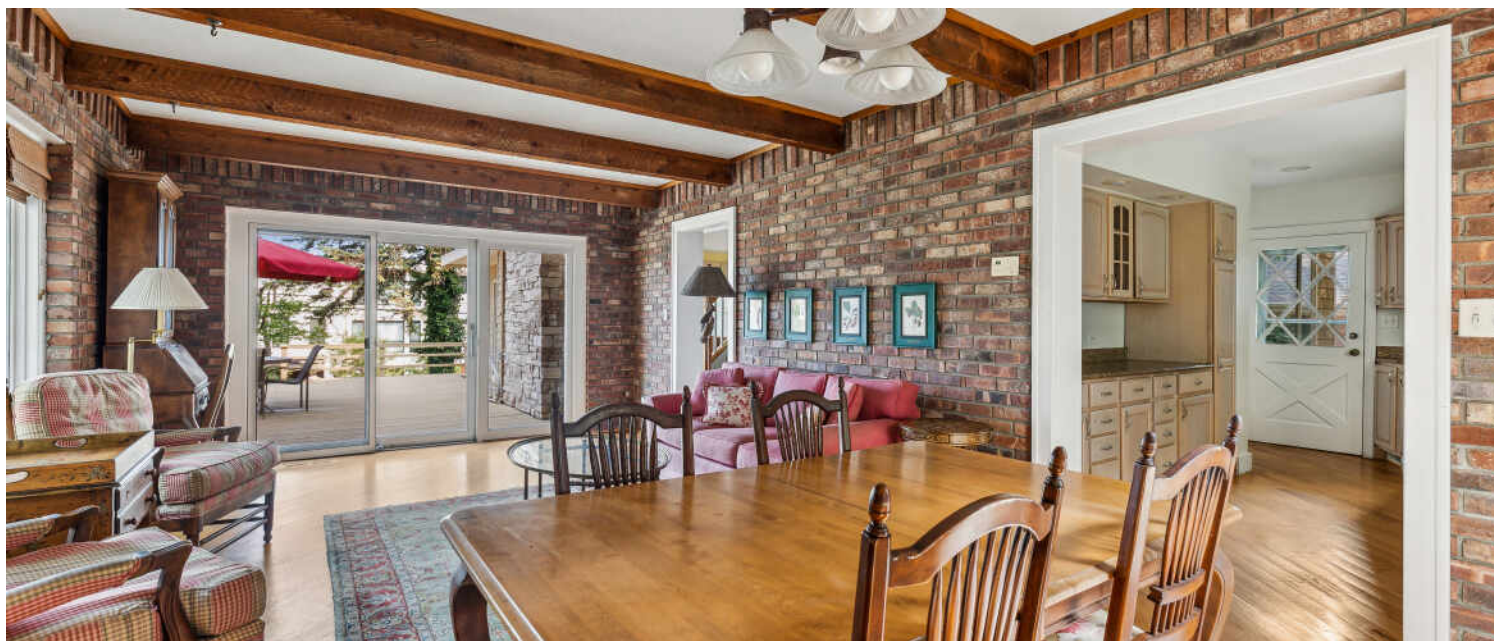
KITCHEN



BREAKFAST AREA



FAMILY ROOM



BREAKFAST AREA



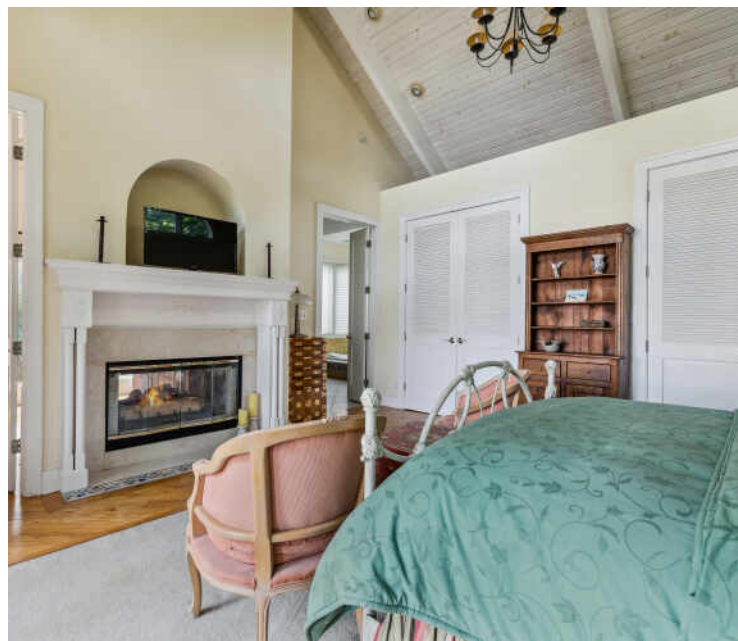
OFFICE



OFFICE



PRIMARY BEDROOM



PRIMARY BEDROOM



PRIMARY BEDROOM



PRIMARY BATHROOM



PRIMARY BATHROOM



BONUS ROOM



2ND BEDROOM



2ND BEDROOM



3RD BEDROOM



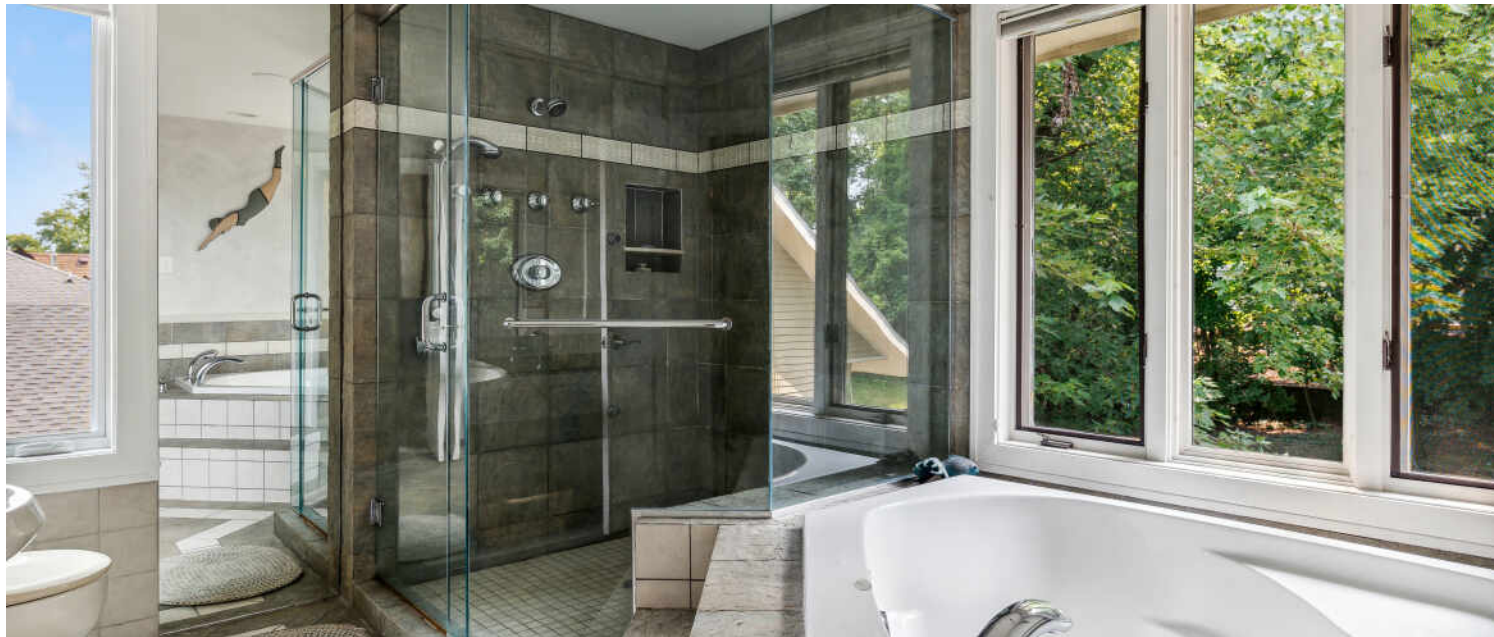
4TH BEDROOM



HALF BATH



2ND BATHROOM



BATHROOM



DECK



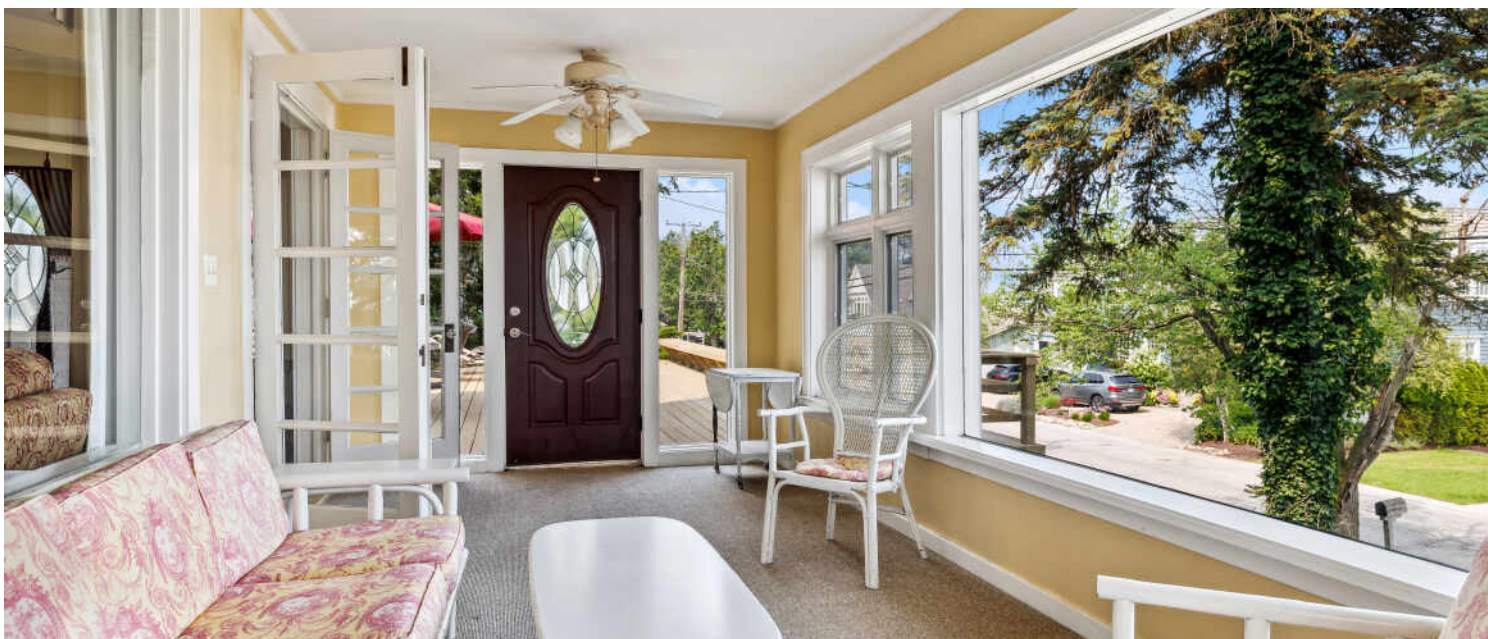
PATIO

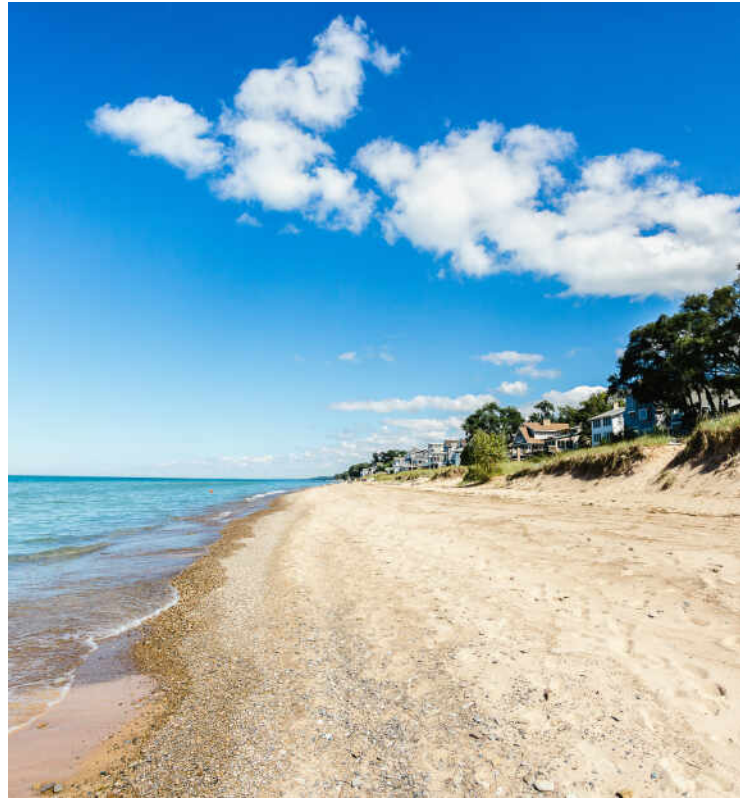


REAR VIEW



BACK YARD





LONG BEACH IS A PICTURESQUE COMMUNITY WITH SMALL-TOWN CHARM AND
CONVENIENT LAKE ACCESS.

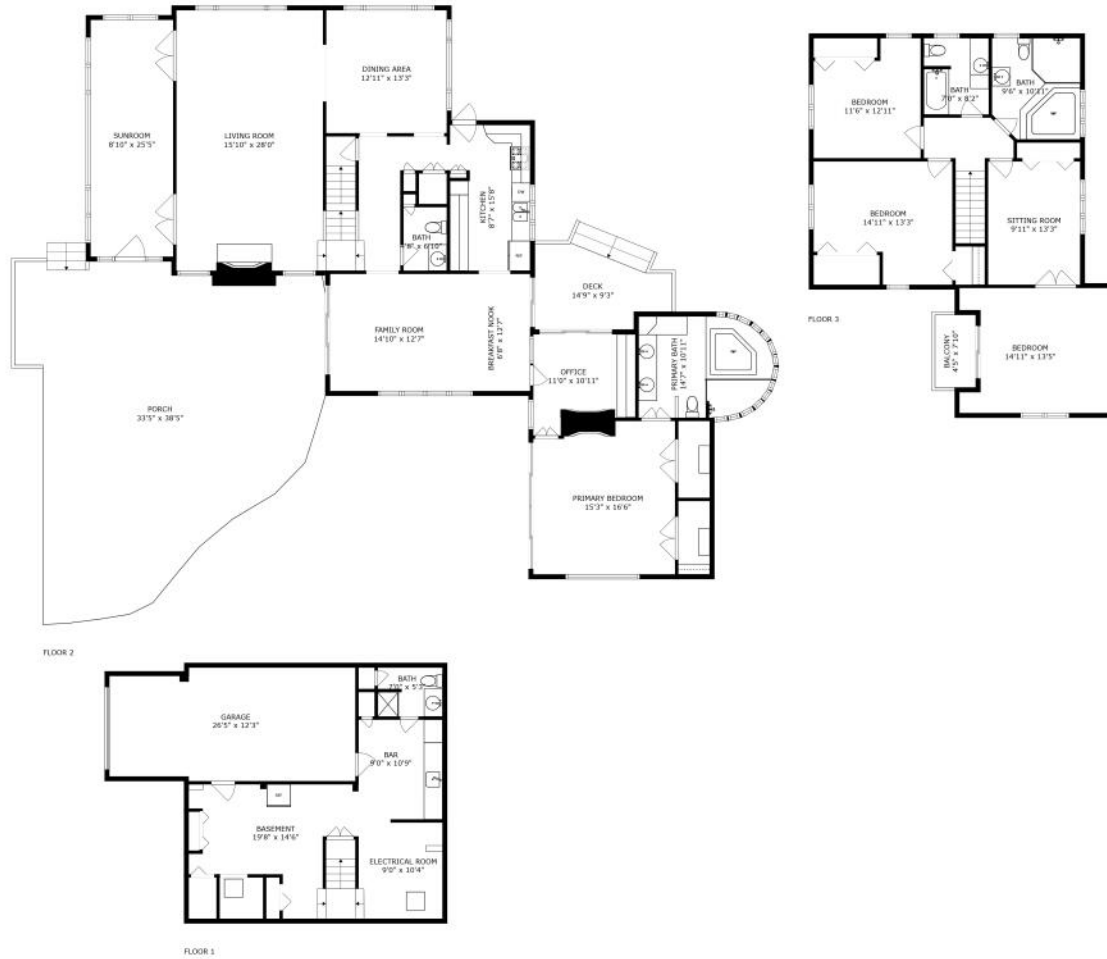
*Locals love the community's
beautiful setting along the Lake
Michigan shoreline and its resort-
style amenities, which set the scene
for both vacationing and year-round
living.*

Established in the 1920s, Long Beach was predominantly a summer getaway before it became home to many year-round residents. The community's proximity to Chicago makes it a popular destination for weekend vacationers as well.

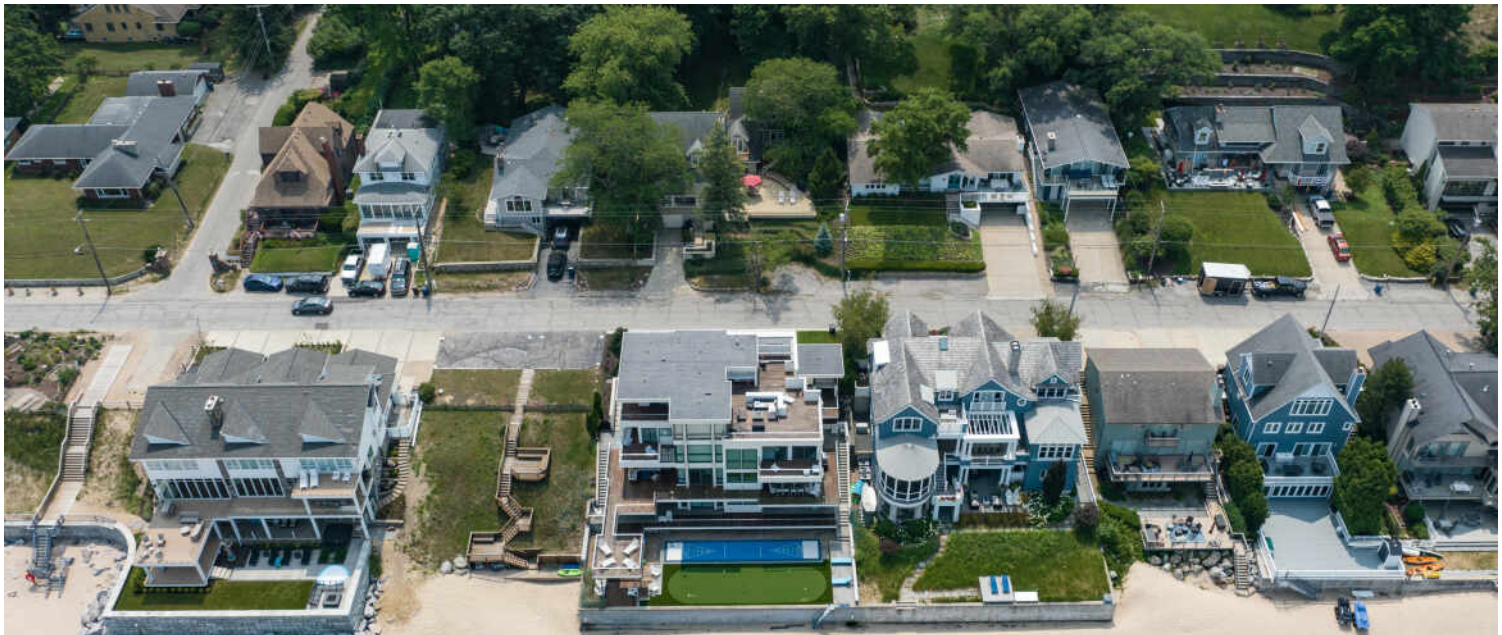
With Long Beach's central location, residents have easy access to Michigan's Harbor Country and all that Northwest Indiana has to offer. The town is home to the Long Beach Community Center, which offers a state-of-the-art fitness center, classes, and personal training, and a country club with an 18-hole golf course.

Long Beach offers housing styles for the most discerning buyers, as well as those who are looking for a casual weekend retreat. Real estate ranges from parcels of acreage that serve as the backdrop for a future dream home to beachfront estates and lakeside cottages.

The Michigan City Transit runs a local bus route that connects Long Beach to Michigan City. Both Amtrak and the South Shore Line offer daily service from Michigan City to Chicago.



SIZES AND DIMENSIONS ARE APPROXIMATE, ACTUAL MAY VARY.



@properties® | CHRISTIE'S
INTERNATIONAL REAL ESTATE

Leading REAL ESTATE
COMPANIES
OF THE WORLD®

LP
LUXURY
PORTFOLIO
INTERNATIONAL®

