

20753 N BUFFALO RUN

KILDEER



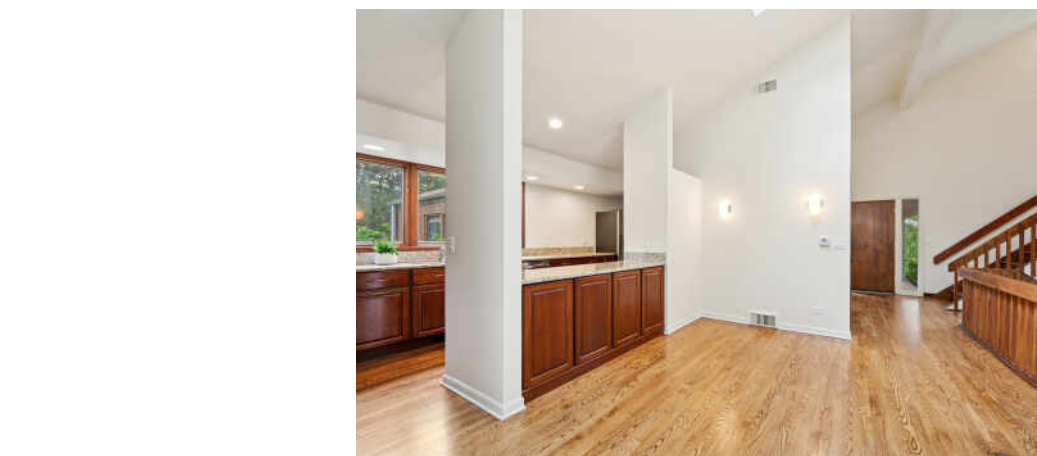


4 BEDROOM
2.1 BATH
TAXES: \$12,169

MID-CENTURY MAGIC ON THE LAKE

Tucked away on 1.39 acres in the heart of Kildeer, this 4-bedroom retreat is the definition of serenity. Think walls of windows, skylights, and sun-drenched open spaces that blur the line between indoors and out. From morning coffee with lake views to sunset strolls in your own backyard, this home was made for peaceful living and effortless entertaining. In addition, the convenience of town amenities, along with Farmington Bath & Tennis Club, are just minutes away. The home's design captures the essence of modern style with clean lines, spacious interiors, and a seamless connection to the outdoors. Enjoy breathtaking views from multiple vantage points in the home, whether you're unwinding in the bedroom, preparing meals in the kitchen, or relaxing in the family room. With generous outdoor space and direct access to the lake, this property invites you to experience beautiful gardens and the splendor of nature. Tasteful, neutral decor provides a canvas for any style. If you're craving clean lines, natural light, and a lifestyle that feels like a permanent vacation—this is it.







VHT STUDIOS



©VHT STUDIOS







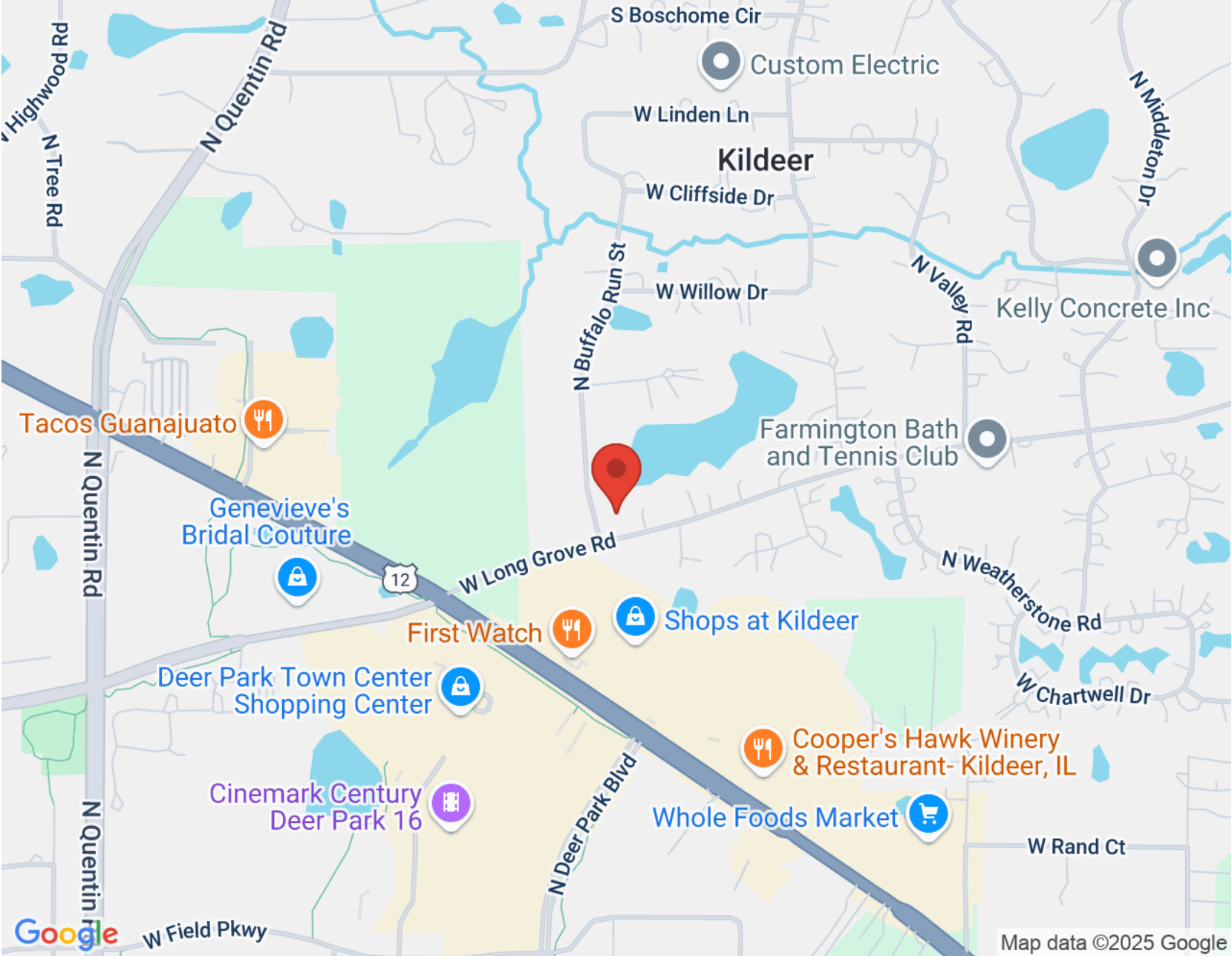
THE COMMUNITY OF **KILDEER** HAS ALWAYS TREASURED ITS TRANQUIL, RURAL SETTING.

So much so that when a developer moved in with plans to buy up and rezone land to build a “billion-dollar city,” they stood their ground.

The community persevered, incorporating as a village in 1958. Today the village of 4,000 continues to maintain its rural tranquility and requiring developers to meet strict zoning codes, including building only one house per acre.

Although Kildeer is known for its quiet lifestyle, there are several amenities here. Residents enjoy local eateries and shopping centers with upscale retailers at Deer Park and the Shops at Kildeer. There are also local country clubs and neighborhood pools, sports, and tennis courts. A new bike path connects the village to forest preserves.

The community is ranked as one of the top suburbs based on its livability ratings including its amenities, public services, and transportation. Commuters can catch the Metra train at the nearby Palatine station. Highway 53 also provides easy access to I-90.





SUSAN SULLIVAN

LUXURY BROKER

847.910.7418

SUSANSULLIVAN@ATPROPERTIES.COM



CHRISTIE'S
INTERNATIONAL REAL ESTATE