

207 N MAIN STREET
MOUNT PROSPECT





ROOM DIMENSIONS

LIVING ROOM : 12' x 25'

FAMILY ROOM : 13' x 16'

DINING ROOM : 9' x 13'

KITCHEN : 9' x 13'

PRIMARY BEDROOM : 12' x 16'

SECOND BEDROOM : 12' x 16'

THIRD BEDROOM : 9' x 13'

REC ROOM : 19' x 22'

UTILITY ROOM : 6' x 18'



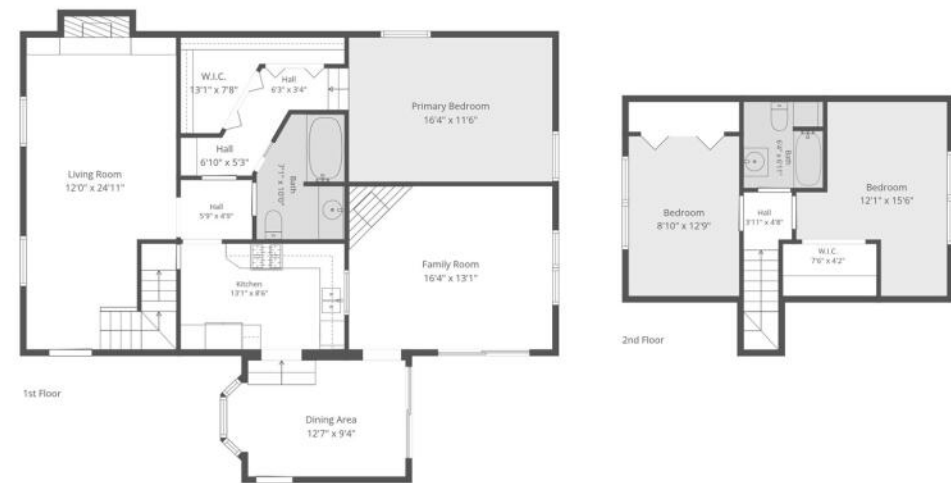
3 BEDROOM

3 BATH

TAXES: \$10,341

Don't let the location fool you! This charming Cape Cod is a hidden retreat that will surprise you from the moment you step inside. Set well back from the street, the home offers a peaceful, secluded feel with a beautifully landscaped yard, mature plantings, and a picturesque pond creating a private outdoor oasis. Inside, timeless character and craftsmanship shine throughout. Rich hardwood floors, stunning woodwork, and custom built-ins add warmth and charm to the inviting living room. The beautifully appointed kitchen features stainless steel appliances, gorgeous cabinetry, and a convenient pass-through window that opens to the family room. The kitchen flows into a cozy eating area nestled in the breezeway, a perfect spot to enjoy morning coffee while taking in views of the beautiful backyard. A spacious family room addition at the rear of the home provides extra living space and a seamless connection to the outdoors. The main level also features a primary bedroom with a walk-in closet and access to a full bath. A beautiful wood staircase leads to two additional bedrooms on the second level and another full bath. The finished basement offers a comfortable recreation area along with a third full bath, providing flexibility for guests, hobbies, or additional living space. With its incredible charm, quality details, spacious layout, and serene setting, this is a home that truly must be seen to be appreciated. A hidden gem that feels like a private retreat while remaining close to everything; steps to the Metra, Library, and downtown Mount Prospect with everything it has to offer!





Total: 1980 sq. ft
 Basement: 446 sq. Ft, 1st Floor: 1181 sq. Ft, 2nd Floor: 353 sq. ft
 Excluded Areas: Undefined: 34 sq. Ft, Utility: 108 sq. Ft, Bay Window: 9 sq. Ft,
 Fireplace: 11 sq. Ft, Low Ceiling: 56 sq. Ft, Walls: 171 sq. ft

Measurements Are Highly Reliable But For Marketing Only. Produced By The Collective.





THE VILLAGE OF **MOUNT PROSPECT** IS A NATIONALLY ACCLAIMED COMMUNITY WITH SMALL-TOWN CHARM AND TREE-LINED STREETS.

Once rated one of the “Top 50 Places to Live” in the United States by *Money* magazine, Mount Prospect is known for its great housing, tight-knit community, and outstanding services.

The village is 20 miles northwest of downtown Chicago and boasts approximately 400 acres of parks and recreation facilities, including four park districts. Residents enjoy an outdoor wave pool, two golf courses, a miniature golf course, outdoor skating rinks, playgrounds, sports fields, and tennis courts.

The downtown features brick-paved streetscapes, wrought-iron lamp posts, and colorful flowers and landscaping. It’s also the site of row houses, townhomes, and condominiums as well as restaurants, entertainment, retail, spas, and service providers. Every summer, the Mount Prospect Chamber of Commerce invites residents and guests to enjoy music, food, and fun at the annual Mount Prospect Downtown Block Party. Fridays on the Green help residents take advantage of the warm weather with free outdoor concerts throughout the summer.

Residents have access to public transportation via Metra and Pace.



MARY O'MALLEY

(847) 804-2644

MARYOMALLEY@ATPROPERTIES.COM