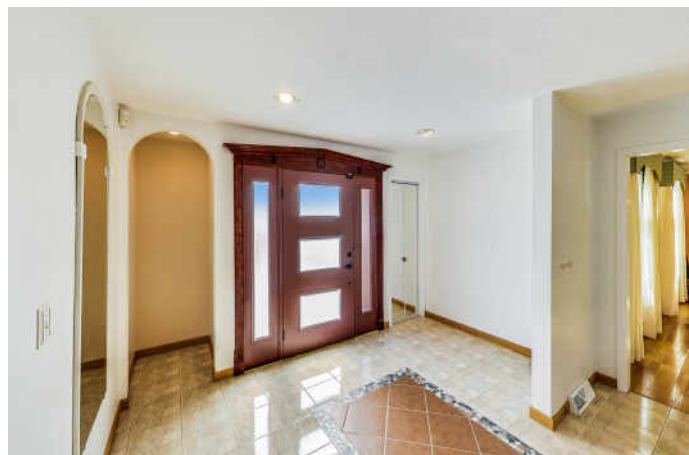


21036 W COLUMBIA COURT
HAWTHORN WOODS





YOUR PRIVATE OASIS

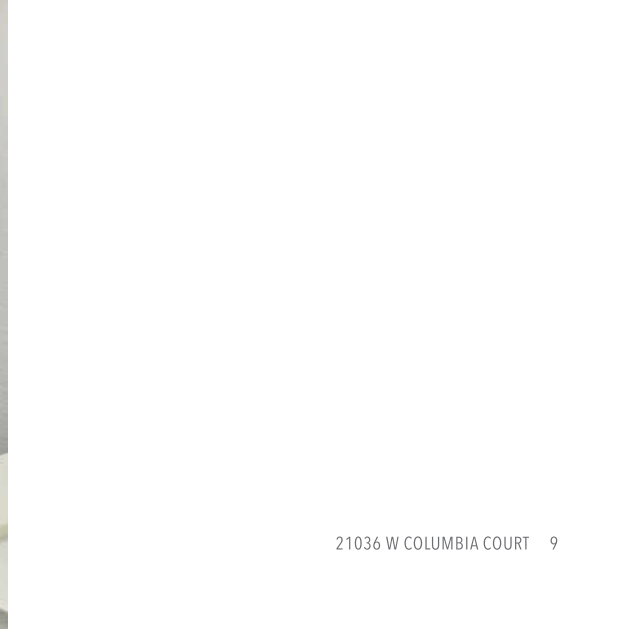
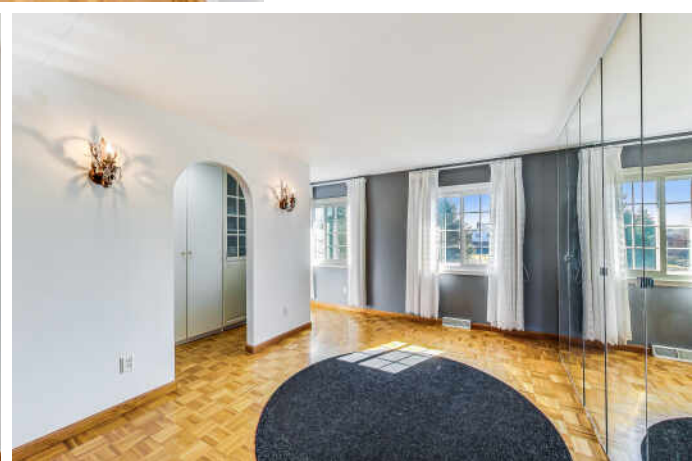
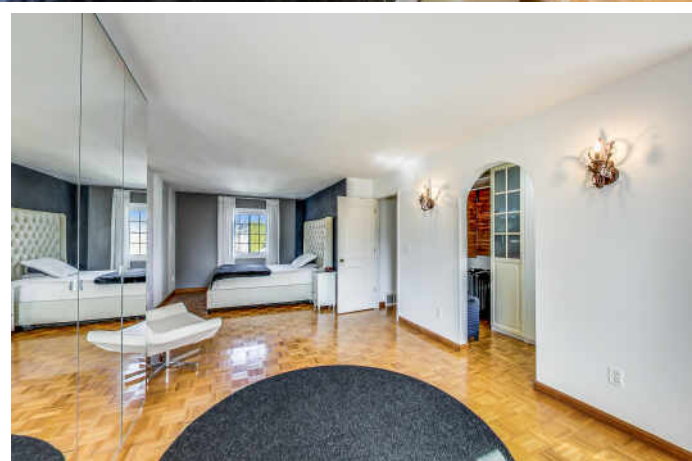
Stunning property in the Stevenson HS district with an abundance of natural light and spacious rooms adorned with beautiful hardwood floors and neutral decor.

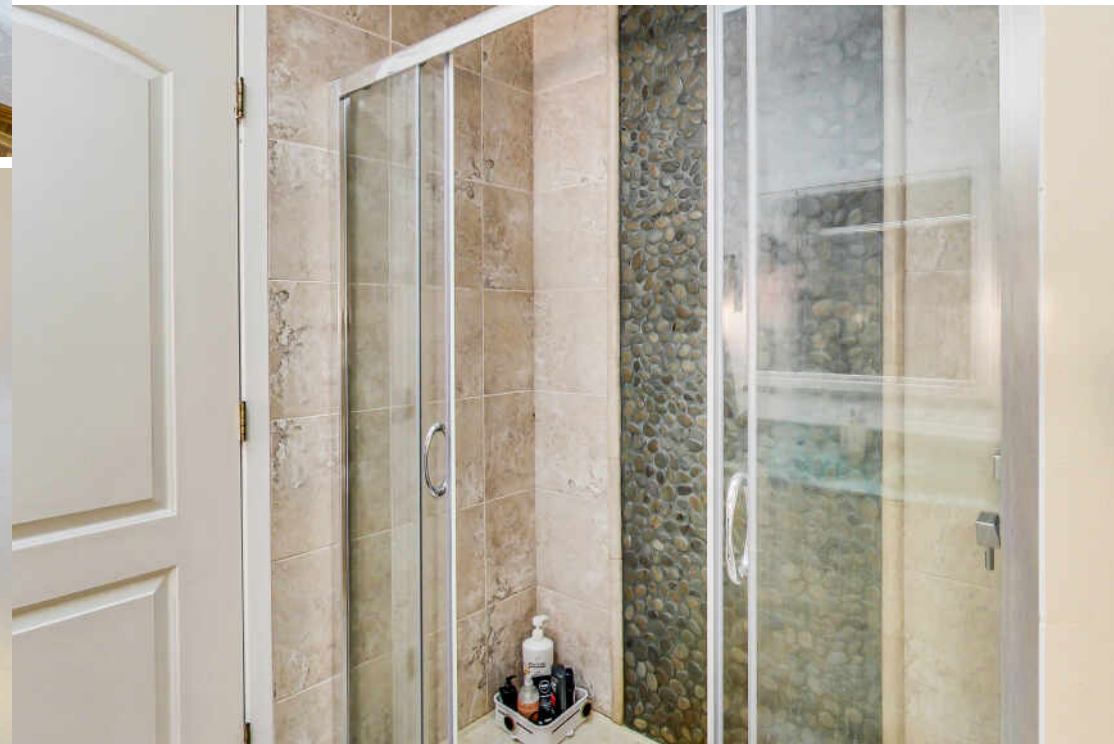
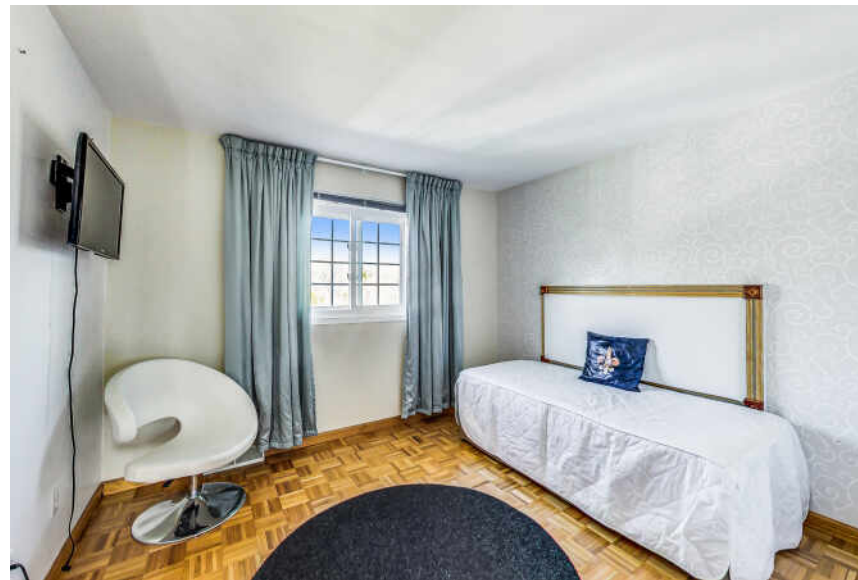
- Large living room flows seamlessly into the formal dining room, where a unique mural wall adds a touch of elegance.
- Gourmet kitchen has custom cabinets, granite countertops, and top-of-the-line appliances including a Whirlpool built-in oven and microwave, GE Monogram dishwasher, electric cooktop, and Samsung refrigerator. Wide windows provide breathtaking views of the backyard and an abundance of natural light.
- Adjoining family room is a cozy gathering spot with fireplace and French doors leading out to the patio. First-floor laundry and powder room.
- Extra-large primary suite features walk-in closet and luxurious private bath with double vanity, soaking tub, and separate shower. Four additional bedrooms, each with a walk-in closet and a double-vanity hall bath upstairs.
- Fully finished basement with powder room and multiple storage rooms.
- Expansive paver patio with built-in grill and a spacious gazebo with double-glazed windows and electricity. The back yard, which borders a wetland, feels like a private oasis with mature trees, professional landscaping, an outdoor fireplace, and a children's playhouse.
- Share photos, video and floor plans of this home with our digital brochure at www.HomesWithSamantha.com.

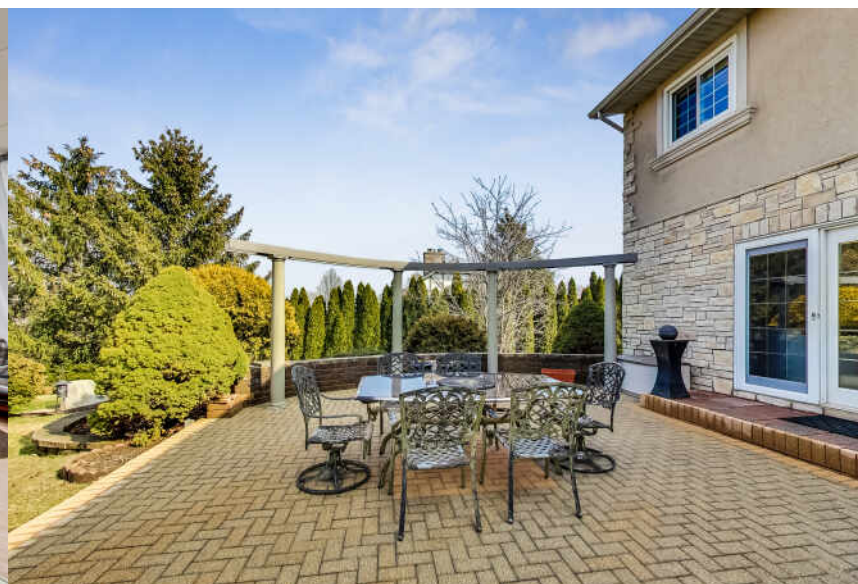
TAXES: \$11,301

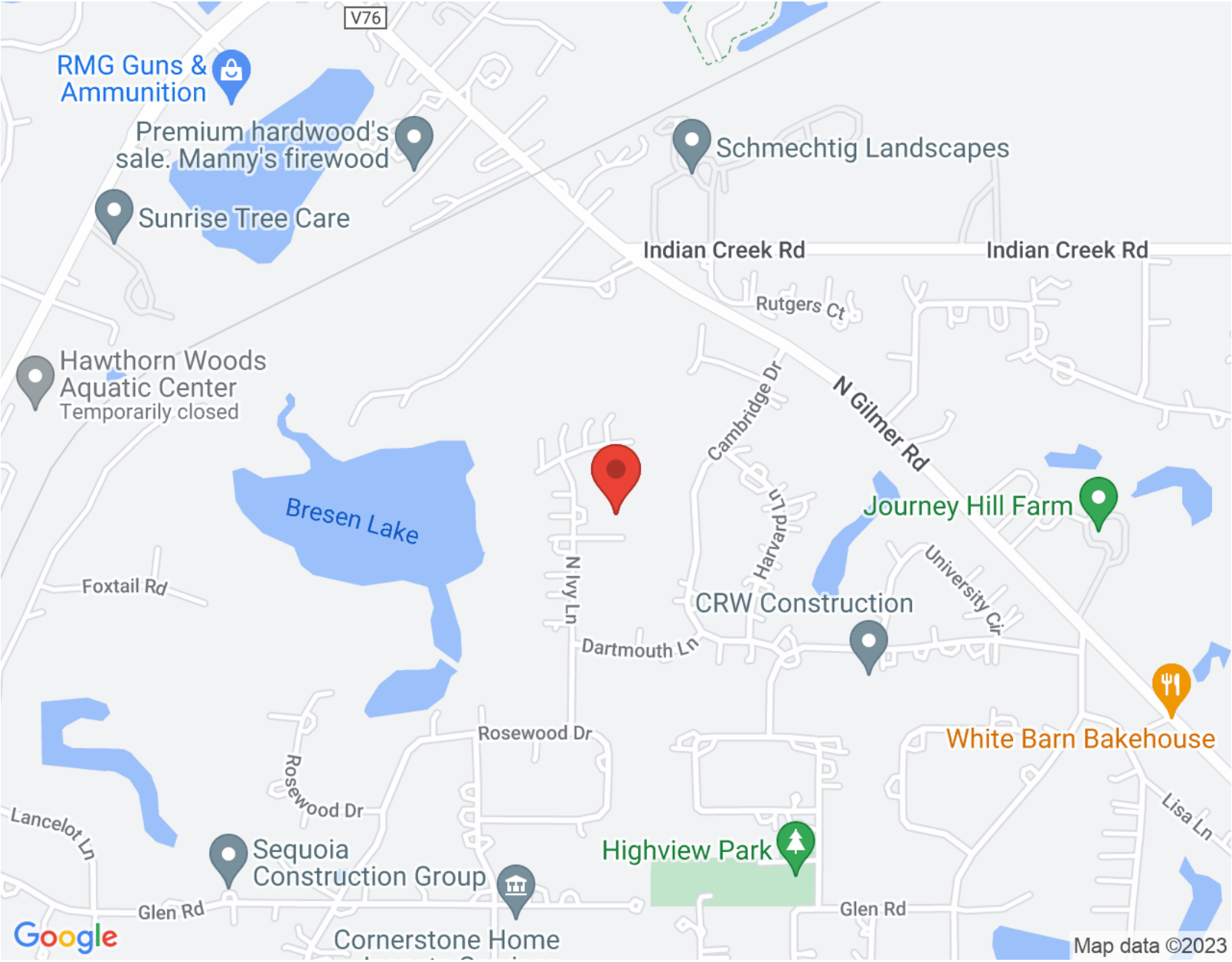














SAMANTHA KALAMARAS

(847) 858-7725

SAMANTHAKALAMARAS@GMAIL.COM

DIGITAL PROPERTY BROCHURE AT

HOMESWITHSAMANTHA.COM



CHRISTIE'S
INTERNATIONAL REAL ESTATE

HOMESWITHSAMANTHA.COM