

210 CHARLES PLACE #210

WILMETTE





ROOM DIMENSIONS

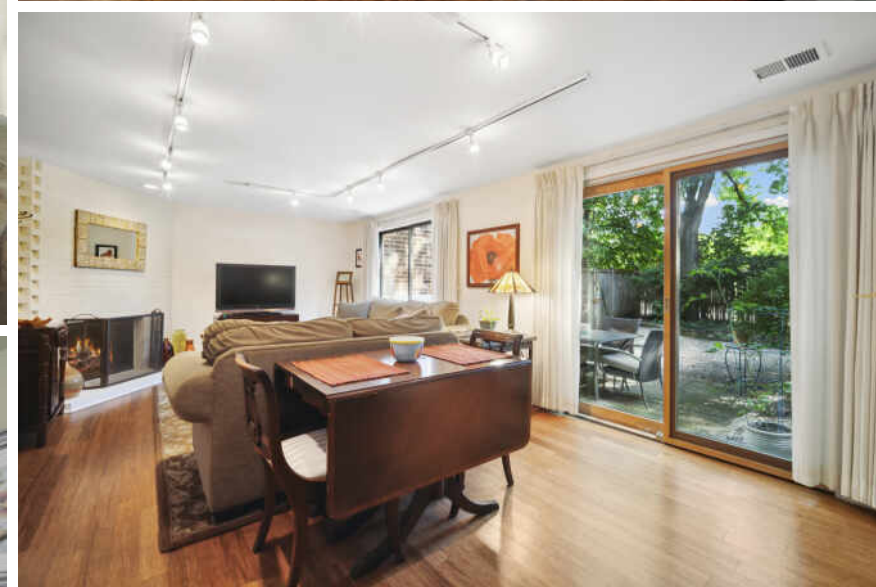
- LIVING ROOM : 23' × 14'
- FAMILY ROOM : 13' × 23'
- DINING ROOM : 12' × 19'
- KITCHEN : 15' × 11'
- PRIMARY BEDROOM : 18' × 12'
- SECOND BEDROOM : 14' × 12'
- THIRD BEDROOM : 13' × 12'

EASY LIVING IN WILMETTE!

A lovely townhouse that lives like a single family home! Enter from the elevated porch into the second (main) level. There is a renovated sunny, eat-in kitchen with white shaker cabinets and quartz counter tops, top-line appliances, LED lighting, ample storage and even a pantry. Hardwood floors through out the kitchen, dining and living rooms. There are extra closets in the living room that be opened and incorporated into the already good-sized desk/work space, a great entertaining/card table area, create a great library, or whatever sparks your imagination.

Upstairs you will find 3 large bedrooms, and updated baths. The Primary en-suite bath features heated floors, Ceasarstone counter tops, a soaking tub, separate shower, double vanity and Grohe and Toto fixtures.

The ground/first floor has an excellent sized family room/den with remote control gas fireplace and bamboo flooring. There is a newer bathroom on this level as well as the entrance to the attached 1 car garage. The driveway allows parking for a 2nd car. Newer windows throughout and a new roof. Guest parking is available. Just under 2300 square feet of comfortable living!

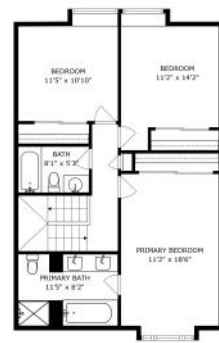




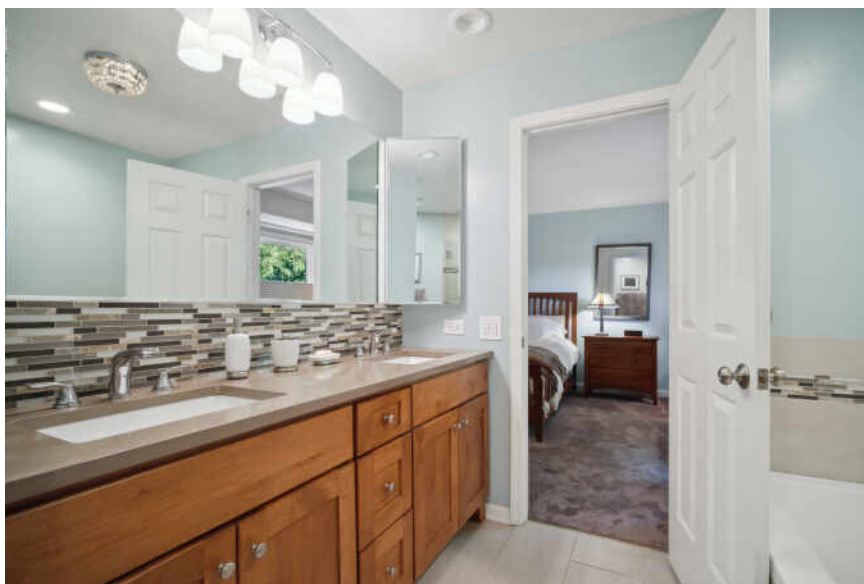
SIZES AND OPERATIONS ARE APPROXIMATE. ACTUAL MAY VARY.



SIZES AND OPERATIONS ARE APPROXIMATE. ACTUAL MAY VARY.



SIZES AND OPERATIONS ARE APPROXIMATE. ACTUAL MAY VARY.





RANKED BY *CHICAGO* MAGAZINE AS ONE OF THE CHICAGO AREA'S BEST PLACES TO LIVE, **WILMETTE** IS A VIBRANT TOWN WITH A WEALTH OF AMENITIES.

When it comes to housing, there's no shortage of architectural styles and price points in this lakefront community. Quintessential Cape Cod, Victorian, and Colonial homes line the village's historic streets, many of which are paved with clay-fired bricks from the 1800s. In addition to single-family homes, there are beachfront condominiums and townhomes. While well-kept homes maintain Wilmette's rich architectural history in all of its glory, new construction attests to the village's enduring popularity.

Residents also have access to nationally recognized New Trier High School, located in Winnetka.

Wilmette's Metra station and access to I-94 make commuting to downtown Chicago a breeze, but there's plenty of reasons to stay local. At the heart of town is the Village Center, where you'll find specialty stores, restaurants, and the Wilmette Theatre. Along Sheridan Road there is Plaza del Lago, providing more shops and services to locals. Meanwhile, ample recreational activities are available at Gillson Park and beach, Wilmette Harbor, and the Centennial Recreation Complex, which includes swimming, tennis, and ice skating.



NOTES _____



JANET EMMERMAN

847.612.1584

847.881.0200

JANETEMMERMAN@ATPROPERTIES.COM



All specifications, features, designs, price, assessments, taxes and materials are subject to change without notice. Depicted floor plans and architectural renderings are only an artist's impression.

