

210 E. PEARSON ST. #10C  
STREETERVILLE





#### ROOM DIMENSIONS

LIVING ROOM : 14' × 20'

DINING ROOM : 11' × 15'

KITCHEN : 9' × 17'

MASTER BEDROOM : 11' × 18'

SECOND BEDROOM : 12' × 16'

THIRD BEDROOM : 9' × 10'

3 BEDROOM

2 BATH

TAXES: \$9,020.94

ASSESSMENTS: \$1,627

## GRACIOUS VINTAGE HOME IN HISTORIC LUXURY BUILDING

Step off the elevator to your elegant foyer with only 2 units per floor. This 3-bedroom condo has been recently renovated offering stylish details and finishes. Spacious floor plan with gorgeous wood work, dark stained hardwood floors and tons of windows to admire the views of the park. The newer white kitchen offers great storage space - marble counters and top of the line appliances. Entertain in your separate formal dining room and Fall in love with the east facing living room with built in book cases and cabinets. Large master bedroom suite with East facing windows, ensuite bath. Second bedroom built in murphy bed and ensuite bath. The quaint 3rd bedroom is best used as an office or den. A perfect location between Michigan Ave & the lake, directly across from MCA & park! Open your LR windows in the summer to hear Tues Jazz at the MCA after shopping the MCA Farmer's Market. Well managed building with 24-hour door staff, great reserves and near-by options to lease parking. This has it all - just move in and enjoy





















## MAJOR DEVELOPMENT IN RECENT YEARS HAS PUT **STREETERVILLE** ON THE MAP.

In the past two decades alone, dozens of new buildings, high-rises, hotels, stores and institutions have sprung up, bringing with them a flock of residents to the high-energy community.

A wide range of housing is available, the majority in high-rise buildings. The neighborhood's stunning array of architecture includes pre-war buildings, a collection of Mies van der Rohe buildings and landmarks including the building-formerly-known-as the John Hancock Center.

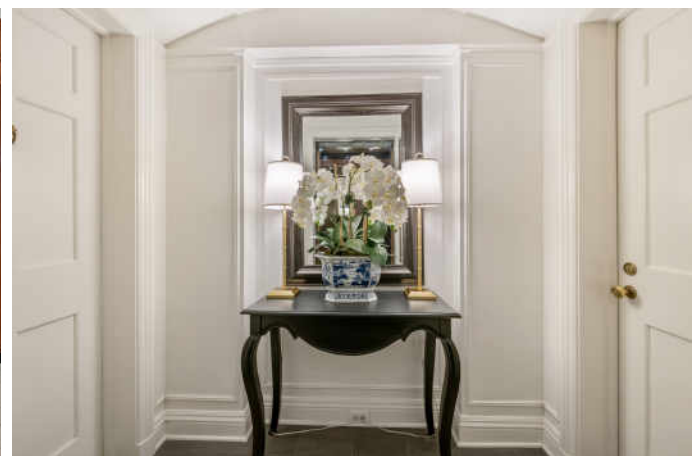
New construction and smaller mid-rise buildings, a few walk-ups and the occasional townhome or single-family home can be found throughout the neighborhood as well.

Streeterville is home to notable attractions such as The Magnificent Mile, Water Tower Place and the Museum of Contemporary Art. It is also home to Northwestern Memorial Hospital's state-of-the-art medical campus and the downtown campuses of Northwestern University and the University of Chicago.

While the neighborhood offers a number of smaller "pocket" parks and playgrounds, the lakefront is the center of attention and it's never more than a couple of blocks away. While dining out is easy, deciding where to go with so many great restaurant options is not.

Residents have easy access throughout the city via the CTA's Red Line and numerous buses that run up and down Michigan Avenue.





## NOTES

[illegible]





## CARRIE MCCORMICK

(312) 961-4612

OVER HALF A BILLION SOLD

CARRIE@ATPROPERTIES.COM

CARRIEMCCORMICKRE.COM

CARRIE  
M<sup>c</sup>CORMICK  

---

LUXURY GROUP



210PEARSON10C.INFO