

2111 W CHURCHILL STREET #112
BUCKTOWN





ROOM DIMENSIONS
LIVING/DINING ROOM : 13' × 20'
KITCHEN : 8' × 17'
PRIMARY BEDROOM : 22' × 12'
SECOND BEDROOM : 13' × 11'
PATIO : 17' × 12'
ENTRY HALLWAY : 17' × 5'
WALK-IN CLOSET : 6' × 6'

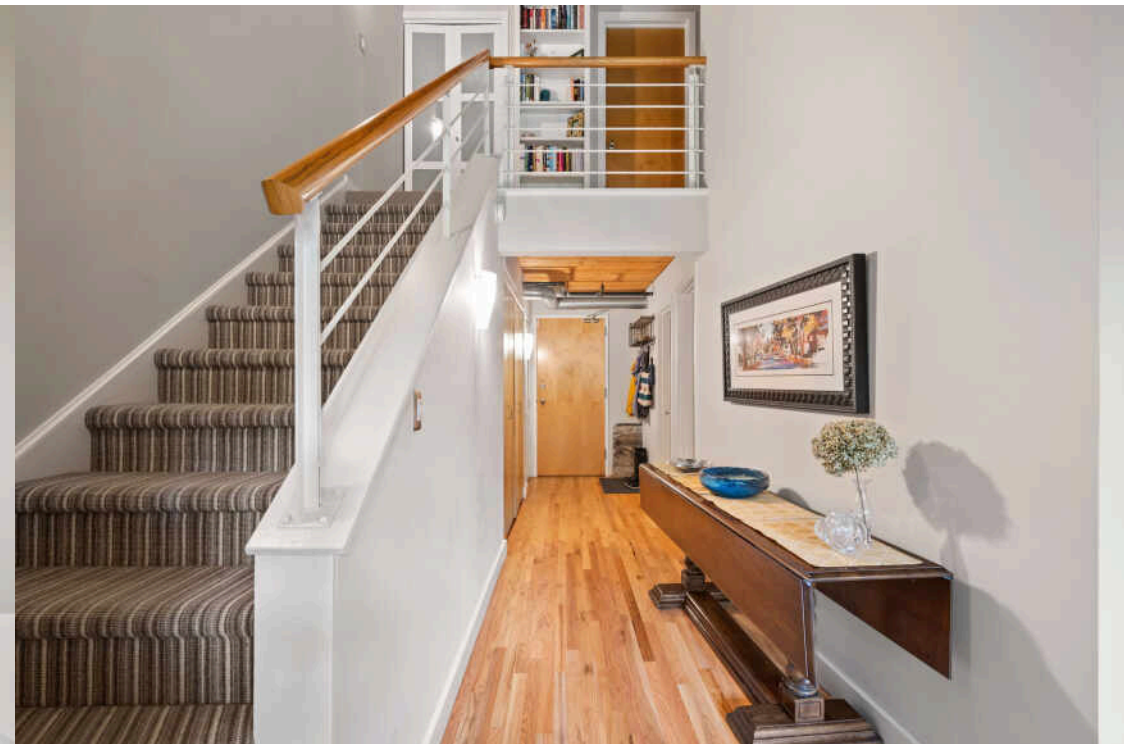
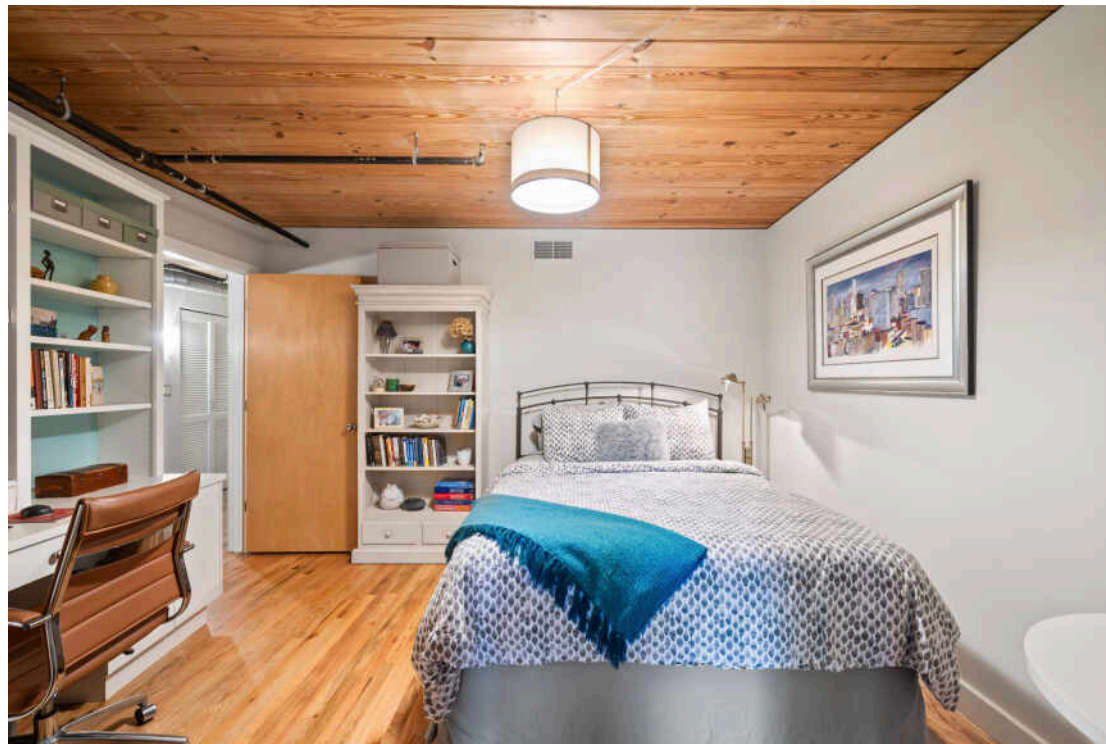
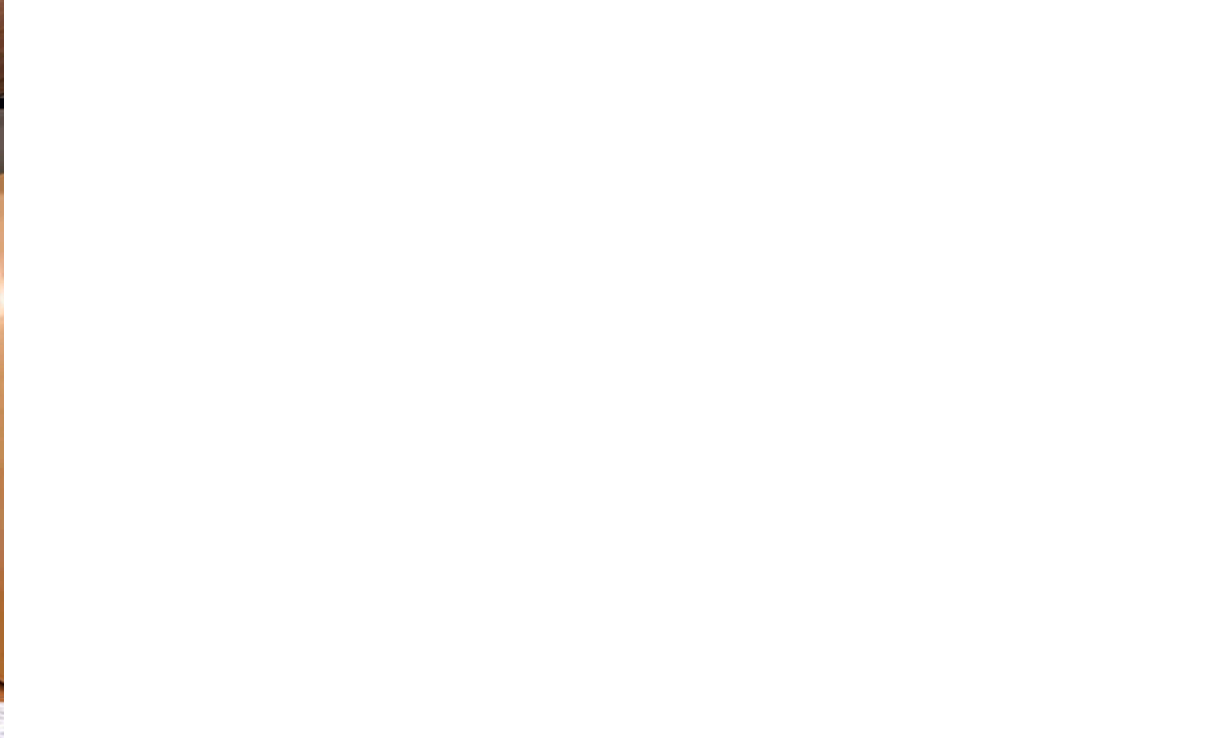
2 BEDROOM
2 BATH
TAXES: 10,085.18
ASSESSMENTS: 483.01

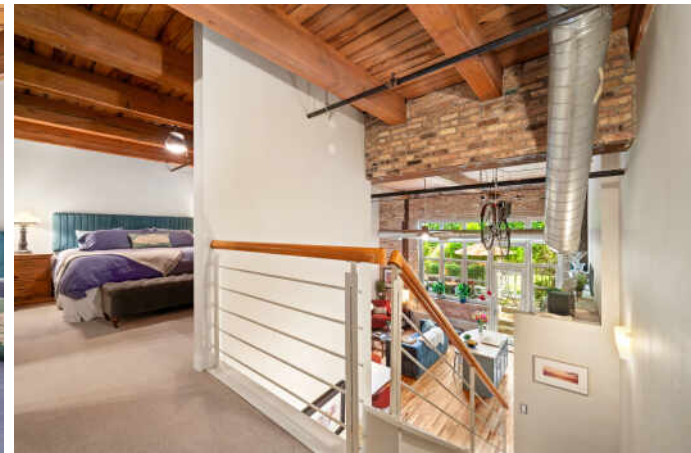
SPECTACULAR TIMBER AND EXPOSED BRICK DUPLEX LOFT

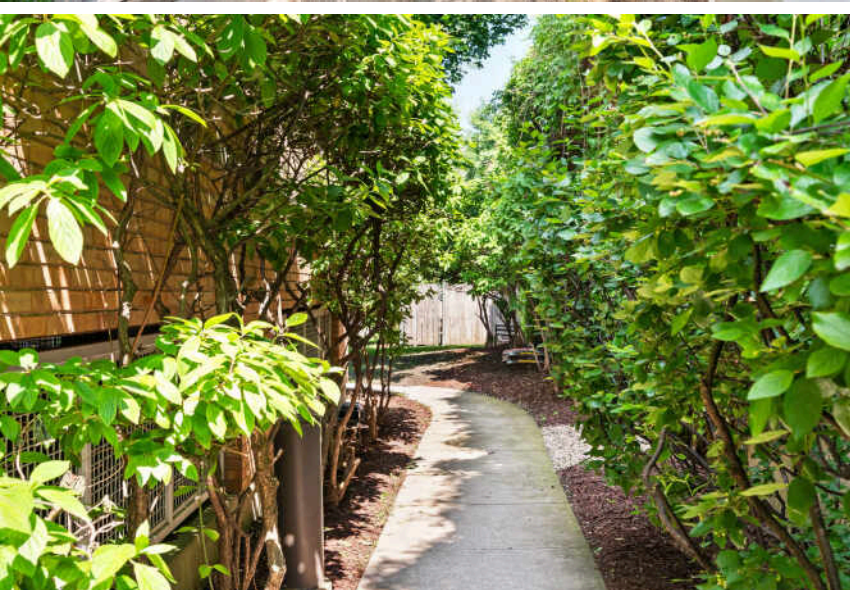
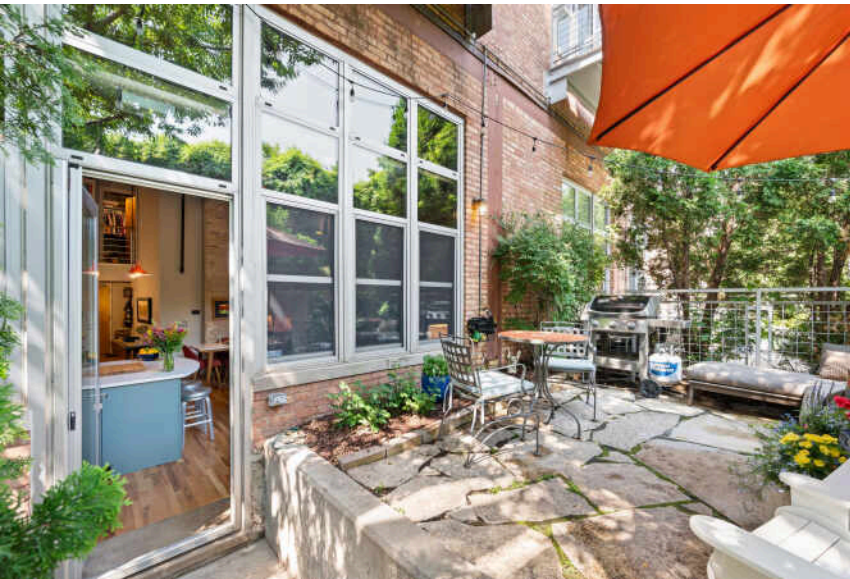
Experience the best of Bucktown living in this perfectly situated, special home in one of the neighborhood's most sought-after locations. This stunning home checks every box, featuring a dramatic open floor plan with soaring 16+ foot ceilings and expansive south-facing windows that fill the space with light.

- Beautifully updated kitchen is a true showstopper—complete with abundant cabinetry, sleek quartz countertops, a stylish herringbone backsplash, and a large center island ideal for both cooking and gathering
- Spacious, flexible layout easily accommodates a full dining area and flows seamlessly onto a private, oversized patio
- The patio offers a rare level of privacy and peace overlooking a serene, tree-filled common greenspace unlike anything else in the city, with space for grilling, gardening, entertaining, or simply relaxing outdoors
- Main level includes a fully enclosed second bedroom outfitted with custom built-in bookshelves and a desk—perfect for a guest room and home office—alongside a full bathroom
- Dramatic primary suite, secluded upstairs, features exposed brick, a generous walk-in closet with custom organization, and a spacious bathroom with a deep soaking tub an additional storage closet, and conveniently nearby laundry
- Brand-new HVAC system, new kitchen cabinets and counters, refinished hardwood floors, and fresh paint—making this home truly move-in ready
- Garage parking and extra storage included
- Nestled on a quiet, tree-lined street just steps from the 606 trail, one block from vibrant Damen Avenue, and within easy reach of Blue Line trains, the expressway, parks, and all the restaurants, shops, and nightlife that make Bucktown one of Chicago's most dynamic neighborhoods.











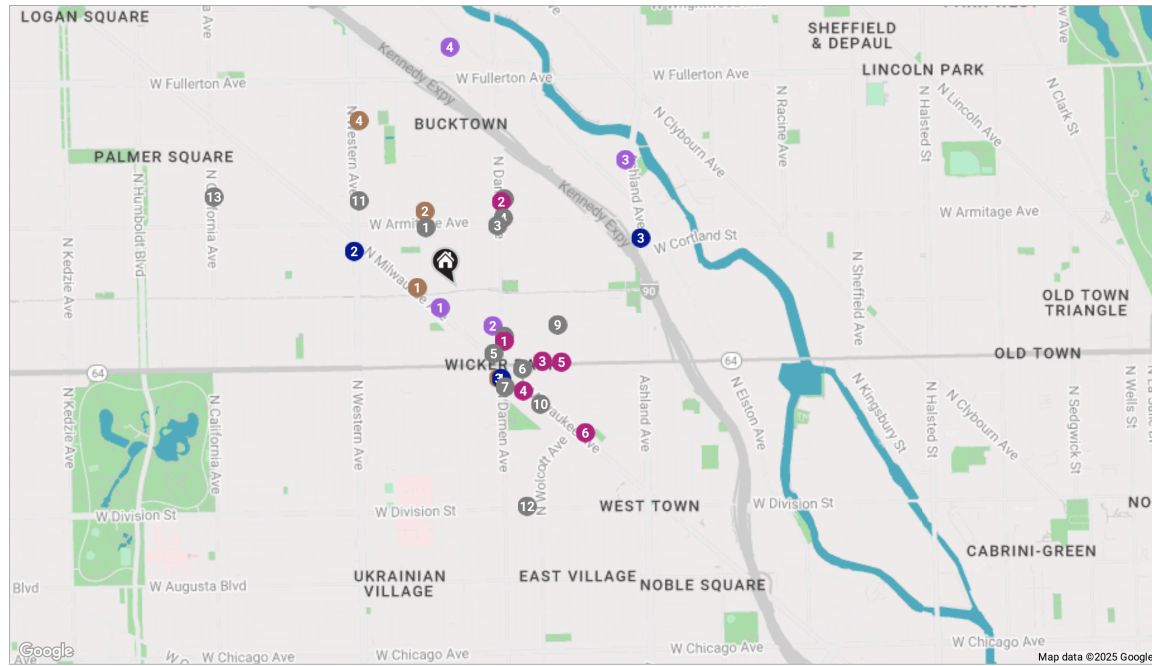
AS AN ARTISTS' COMMUNITY, NIGHTLIFE HOTSPOT, FOODIE DESTINATION, AND SHOPPING MECCA, **BUCKTOWN** IS UNDISPUTEDLY ONE OF CHICAGO'S TRENDIEST NEIGHBORHOODS.

Bucktown's restaurant scene is diverse and local friendly. Residents also enjoy a unique mix of independent bookstores, shops, bars, galleries, and theaters. Meanwhile, upscale retailers have made the neighborhood a designer destination.

Overlooking the six corners intersection, a stunning Art Deco skyscraper is now a modern boutique hotel with a rooftop bar and amazing views. A stately historic bank building on the corner is now home to a pharmacy with stunning archways and stained-glass ceilings.

Located a few miles northwest of The Loop, Bucktown has a variety of housing including modern new construction, stately brownstones, and loft apartments and condominiums.

Between the CTA's Blue Line, the 606 Trail, and numerous bus routes, it's easy for residents to get to surrounding neighborhoods. Likewise, drivers appreciate being able to hop on the expressway just east of the community.



RESTAURANTS

- 1 Antico
1946 N LEAVITT ST, 0.2 MI
- 2 The Goddess and Grocer Bucktown
1649 N DAMEN AVE, 0.2 MI
- 3 Le Bouchon
1958 NORTH DAMEN AVENUE APT 3, 0.3 MI
- 4 Mirra
1954 W ARMITAGE AVE, 0.3 MI
- 5 Mindy's Bakery
1623 N MILWAUKEE AVE, 0.3 MI
- 6 Piece Pizzeria and Brewery
1927 WEST NORTH AVENUE, 0.4 MI
- 7 Big Star Wicker Park
1531 NORTH DAMEN AVENUE, 0.4 MI
- 8 Coast Sushi Bar
2045 NORTH DAMEN AVENUE, 0.4 MI

- 9 Club Lucky
1824 WEST WABANSIA AVENUE, 0.4 MI
- 10 Bongo Room
1470 NORTH MILWAUKEE AVENUE, 0.5 MI
- 11 The Art of Chicken
2041 N WESTERN AVE, 0.5 MI
- 12 Milk & Honey Cafe
1920 WEST DIVISION STREET, 0.8 MI
- 13 Bang Bang Pie & Biscuits
2051 NORTH CALIFORNIA AVENUE, 0.9 MI

COFFEE

- 1 Ipsento 606
1813 N MILWAUKEE AVE, 0.1 MI
- 2 Red June Cafe
2020 N LEAVITT ST, 0.3 MI
- 3 La Colombe Coffee Workshop
1552 NORTH DAMEN AVENUE, 0.4 MI

- 4 Allez Café
2239 N WESTERN AVE, 0.7 MI

SHOPPING

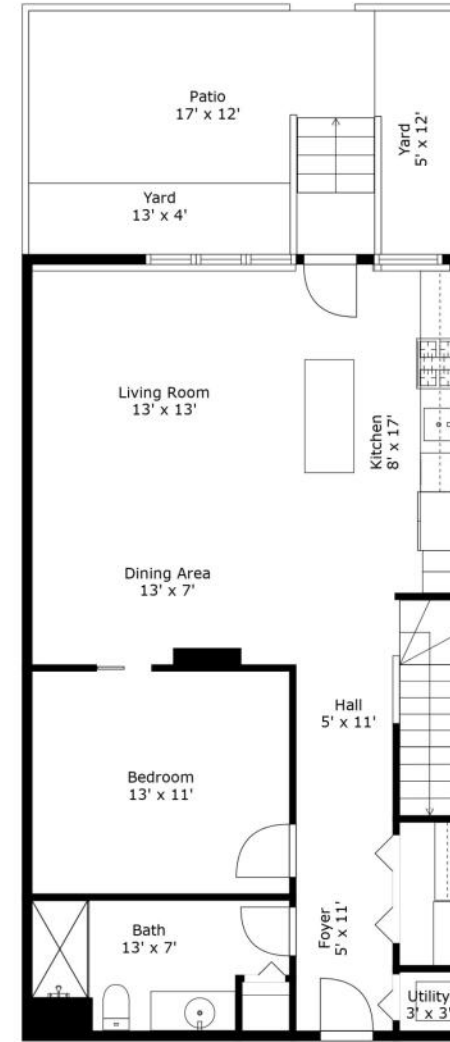
- 1 P45
1643 N DAMEN AVE, 0.3 MI
- 2 Virtu
2035 N DAMEN AVE, 0.3 MI
- 3 Quimby's Bookstore
1854 WEST NORTH AVENUE, 0.4 MI
- 4 adidas Originals Store Chicago
1532 N MILWAUKEE AVE, 0.4 MI
- 5 AKIRA
1814 W NORTH AVE, 0.5 MI
- 6 Reckless Records
1379 NORTH MILWAUKEE AVENUE, 0.7 MI

GROCERY

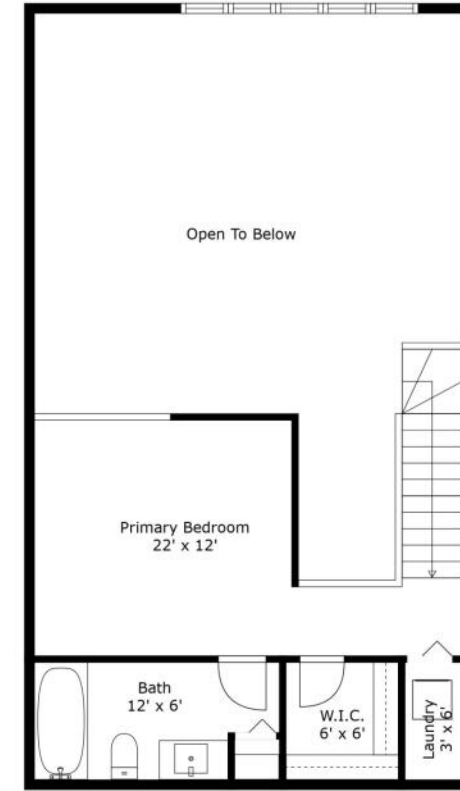
- 1 ALDI
1753 NORTH MILWAUKEE AVENUE, 0.1 MI
- 2 Olivia's Market
2014 WEST WABANSIA AVENUE, 0.2 MI
- 3 Mariano's
2112 N ASHLAND AVE, 0.7 MI
- 4 Fresh Thyme Market
2500 NORTH ELSTON AVENUE, 0.8 MI

TRANSIT

- 1 Damen
CTA - BLUE LINE, 0.4 MI
- 2 Western
CTA - BLUE LINE, 0.4 MI
- 3 Clybourn
METRA - UNION PACIFIC NORTH, 0.7 MI



Floor 1



Floor 2

Floor Plan Created By Cubicasa App. Measurements Deemed Highly Reliable But Not Guaranteed.



GREG DESMOND

(773) 251-1375

GDESMOND@ATPROPERTIES.COM

GREGDESMOND.COM



@properties® | CHRISTIE'S
INTERNATIONAL REAL ESTATE