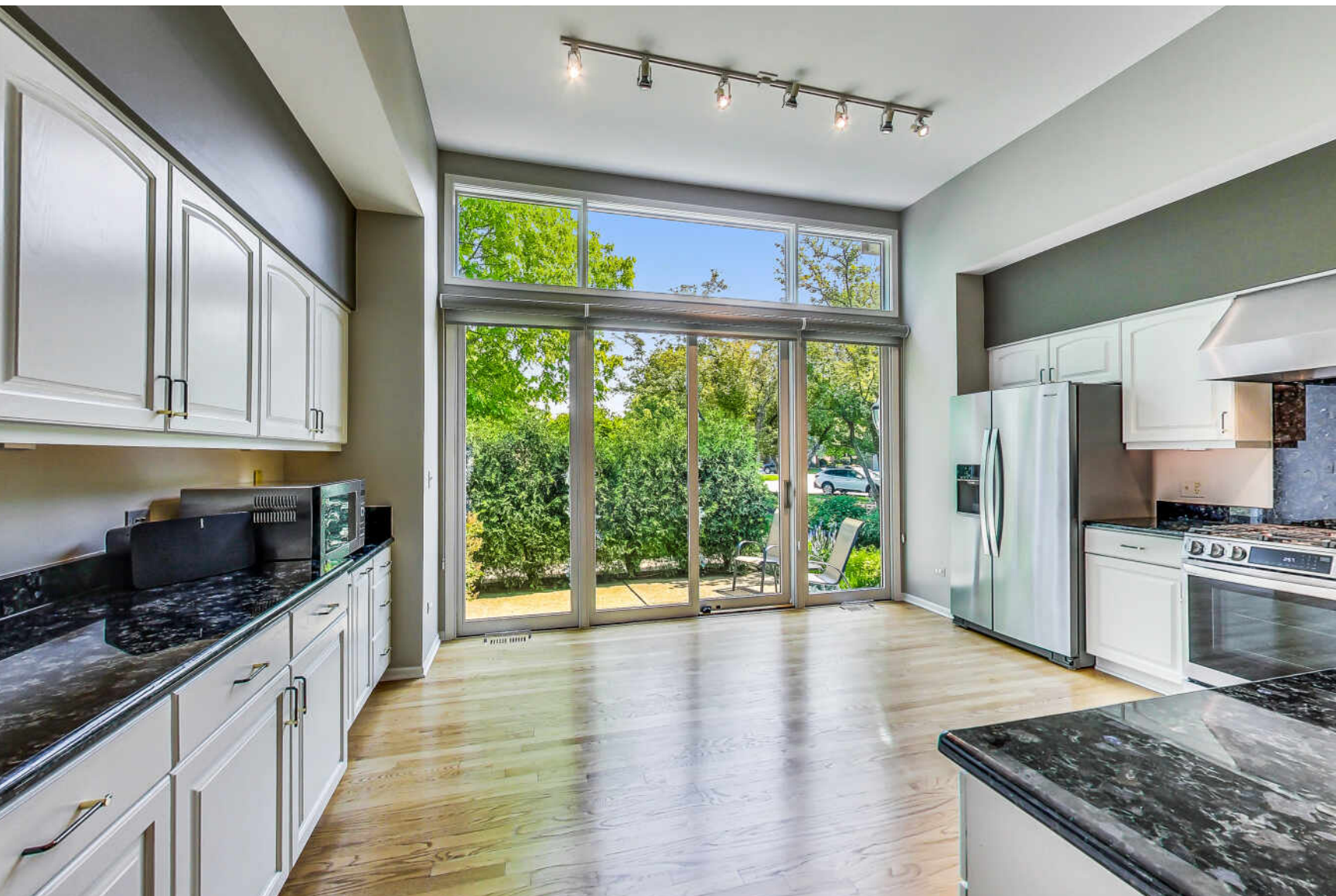


2115 TROWBRIDGE COURT

GLENVIEW

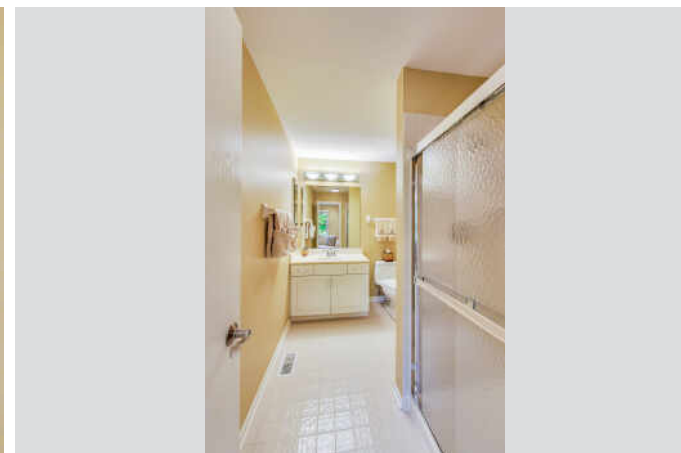
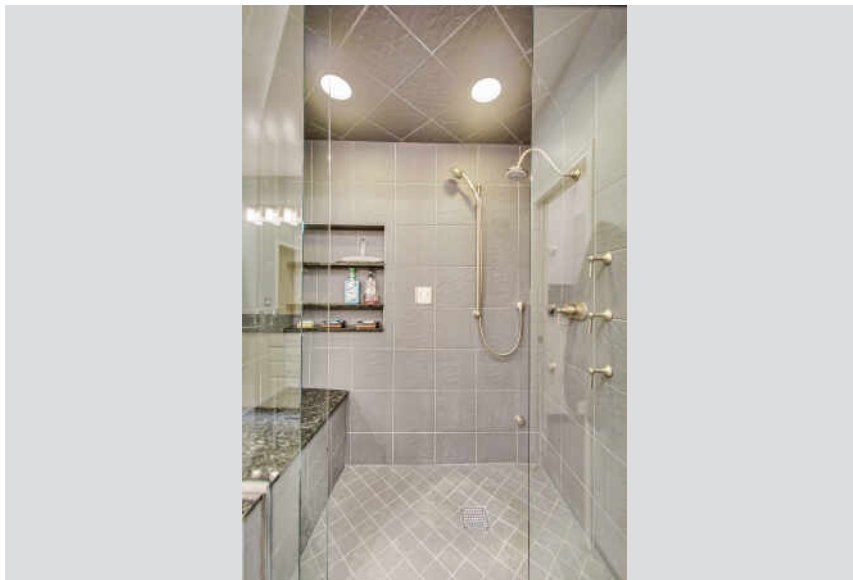


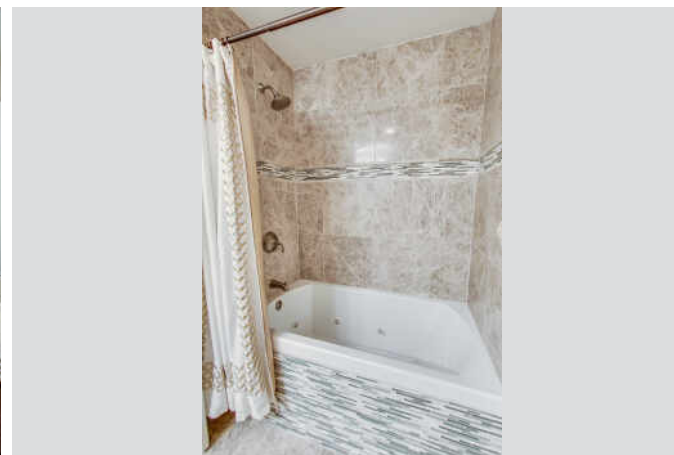


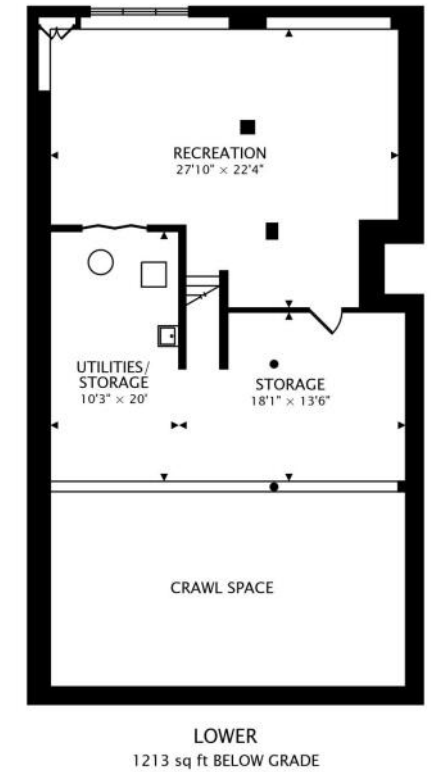
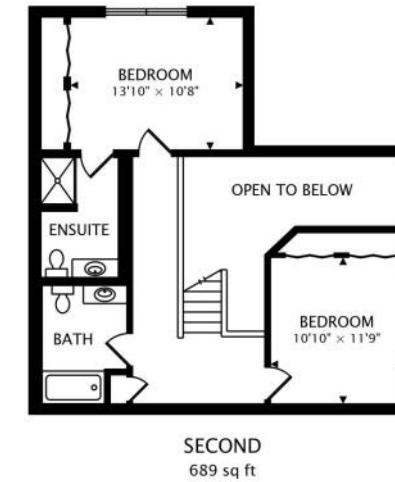
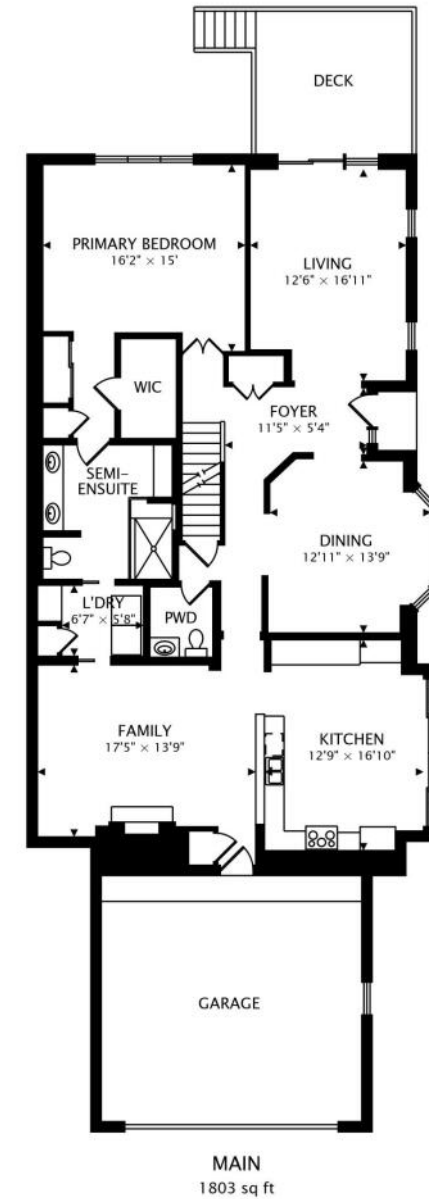
3 BEDROOM
3.1 BATH
ASSESSMENTS: \$340/MONTH

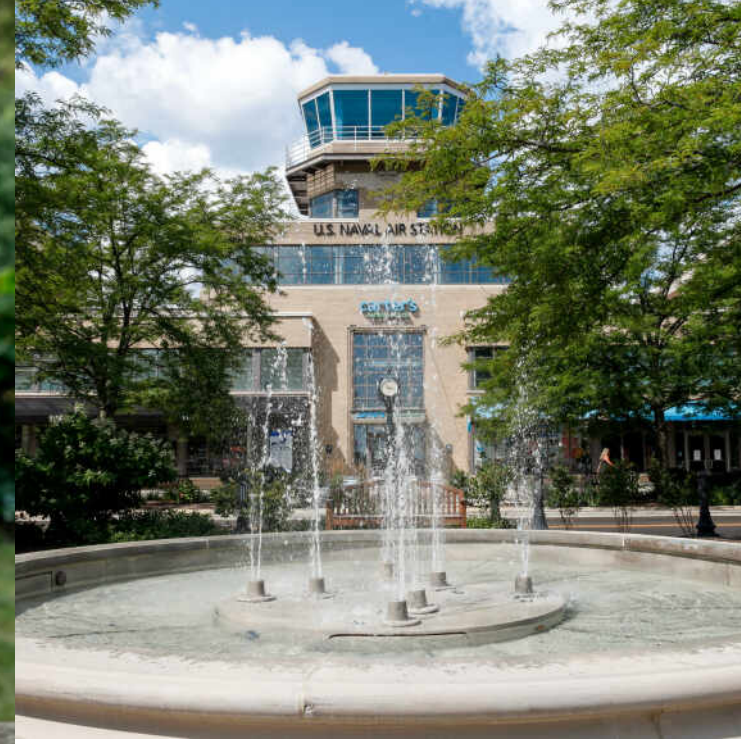
Stylish, upscale townhome in desirable Glenlake Estates with fabulous MAIN FLOOR PRIMARY SUITE featuring abundant closet space, spa bath with walk-in steam shower and adjacent main floor laundry room. Light and bright throughout, with great views out every window, feels and lives like a single family home. Spacious white cook's kitchen with S/S appliances and granite counters opens to pretty patio surrounded by lush vegetation and can host center island or dining table. Adjoining open concept family room boasts gas fireplace and soaring 18' ceilings and illuminated plant shelf. Second bedroom with full en-suite and third bedroom plus full hall bath complete second floor. Back deck off formal living room overlooks park like yard. Formal dining room and powder room on main level offer great flow for entertaining. Partial finished basement with windows to backyard feels like a main level. Beautiful natural hardwood floors on main level, plush carpet in bedrooms and new carpeting in the lower level. Elfa organized closets everywhere! So many updates! Private, end unit in a natural setting is impeccably maintained and move in ready.











JUST 20 MILES FROM DOWNTOWN CHICAGO, **GLENVIEW** IS A DESTINATION IN ITS OWN RIGHT.

The scenic North Shore town has expanded rapidly thanks to its established neighborhoods, convenient access to transportation, and array of amenities.

More than 45,000 people call Glenview home, with properties ranging from townhomes and condominiums to luxury custom homes featuring the latest amenities. Newer homes can also be found at The Glen, a large development on the site of the former Glenview Naval Air Station that offers an assortment of shops and restaurants, a movie complex, the Kohl Children's Museum, and access to one of the town's two Metra stations.

Glenview is served by a number of public and private schools, including Glenbrook South High School, ranked among the top in the nation according to Business Insider.

The Glenview Park District offers indoor and outdoor pools, golf courses, soccer fields, nature trails, an ice center, tennis club, and multi-purpose community center.

In addition to modern development, Glenview celebrates and preserves its early days with two notable attractions: Wagner Farm and The Grove. A 20-acre working farm, Wagner Farm has hands-on programs – horseback riding, tractor driving, and other activities – that reflect a day in the life of a 1920s farmer. The Grove, a National Historic Landmark, includes a prairie, nature trails, historic buildings, and a log cabin that dates back to the 1850s.



RENEE DICKMAN

(847) 877-5977

RDICKMAN@ATPROPERTIES.COM

WWW.2115TROWBRIDGE.INFO



CHRISTIE'S
INTERNATIONAL REAL ESTATE