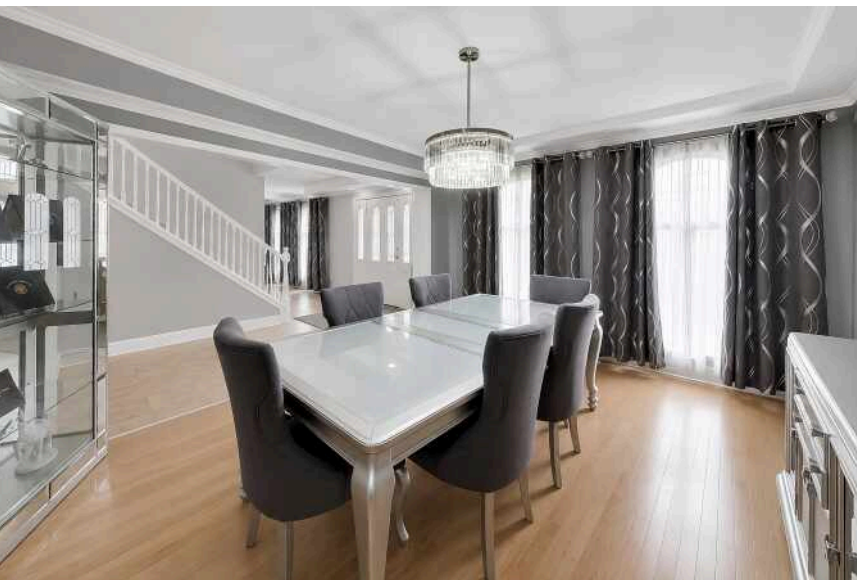


2116 RIDGE ROAD  
LAKE COUNTY

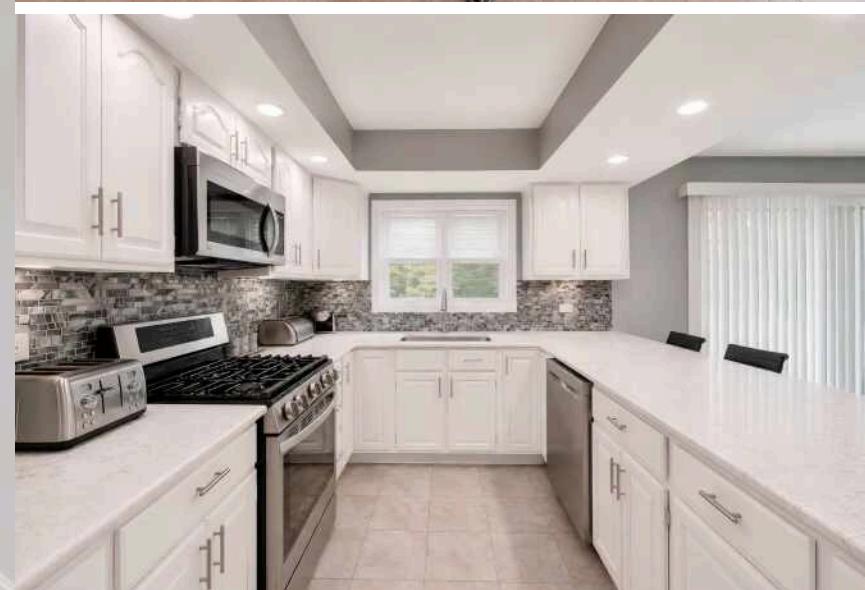


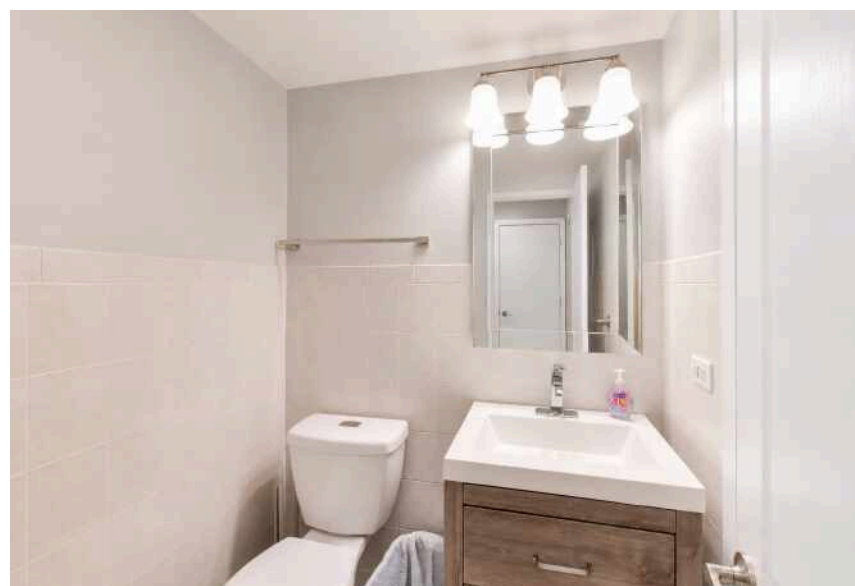


## SPACIOUS, VERSATILE, AND PERFECTLY LOCATED IN SOUGHT-AFTER HIGHLAND!

This impressive and expansive 4-bedroom, 4-bath residence offers over 4,216 sq ft of versatile living space designed for both comfort and functionality. A standout feature is the fully finished basement with a second kitchen—perfect for related living, guest quarters, or extended stay adding flexibility that's hard to find! The main level features a welcoming foyer, generously sized living, dining and entertaining areas, while the upper level provides spacious bedrooms and ample storage throughout. Whether you're hosting gatherings or need room to spread out, this home delivers. Ideally located directly across the street from Wicker Park, enjoy scenic views, green space, and easy access to walking trails, recreation, and community events right outside your door. Year-round recreation! Situated with convenient access to shopping, dining, and major commuter routes, this property blends size, location, and adaptability—an excellent fit for buyers seeking space and multi-generational living. A standout home with endless potential!

4 BEDROOM  
4 BATH



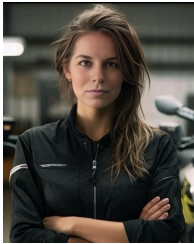












## AMBER OVERBEY

219.323.9632

219.440.0070

AMBEROVERBEY@ATPROPERTIES.COM