

2121 TROWBRIDGE COURT

GLENLAKE ESTATES





ROOM DIMENSIONS

LIVING ROOM : 23' × 14'
DINING/FAMILY ROOM : 16' × 17'
KITCHEN : 15' × 11'
PRIMARY BEDROOM : 19' × 14'
PRIMARY WALK-IN CLOSET : 10' × 7'
FOYER : 7' × 5'
LAUNDRY ROOM : 11' × 10'
SECOND BEDROOM : 15' × 12'
THIRD BEDROOM : 15' × 11'
UPSTAIRS WALK-IN CLOSET : 14' × 7'
LOFT : 14' × 8'
ENGLISH LL/OFFICE/REC. RM : 23' × 24'
STORAGE ROOM : 33' × 15'

3 BEDROOM

2.1 BATH

TAXES: \$10,052

ASSESSMENTS: \$360

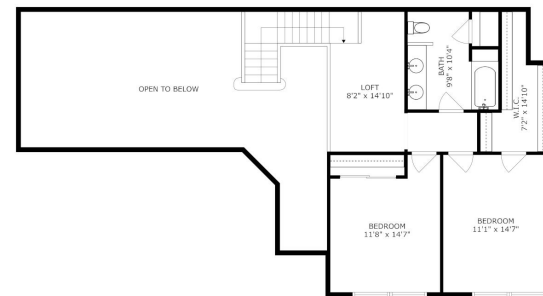
FIRST FLOOR PRIMARY WITH OPEN FLOOR PLAN

Rarely available pristine Glenlake Estates Townhome! Open floor plan with first floor primary suite. Bright sunny end unit surrounded by professional landscaping and mature trees. Updated kitchen with newer stainless appliances, refaced cabinets, granite counters and island. Kitchen opens to eating area and oversized great room with fireplace flanked by French doors to access deck. Great room with skylights, vaulted ceiling and huge picture window overlooking scenic yard. First floor powder room and generous sized laundry room with access to two car attached garage. Upstairs you will find two bedrooms with full bath and a large loft area. Finished English basement with views of yard and wall of built-in book cases. Huge storage area, new furnace, a/c, sump pump and roof. Glenlake Estates is an unique community of homes and townhomes with only one entrance. Close to Endeavor (NorthShore) Hospital, the Glen, shopping and award winning schools. Easy access to 294 and O'Hare. Don't miss out on this maintenance free living in a prime location.

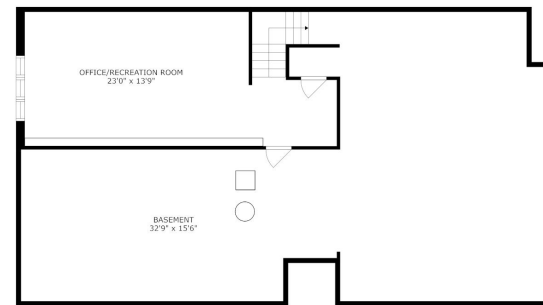








SIZES AND DIMENSIONS ARE APPROXIMATE. ACTUAL MAY VARY.



SIZES AND DIMENSIONS ARE APPROXIMATE. ACTUAL MAY VARY.





This image shows a blank sheet of white paper with horizontal ruling lines. The lines are evenly spaced and run across the width of the page. There are no margins, text, or other markings on the paper.



PAULA MCGRATH

847 707-9208

847-998-0200

PAULAMCGRATH@ATPROPERTIES.COM

PAULAMCGRATHHOMES.COM



PAULA MCGRATH

homes

@properties®

CHRISTIE'S
INTERNATIONAL REAL ESTATE

All specifications, features, designs, price, assessments, taxes and materials are subject to change without notice. Depicted floor plans and architectural renderings are only an artist's impression.

