



2129 & 2133 E LAKE SHORE DRIVE TWIN LAKES



2129 & 2133 E LAKE SHORE DRIVE • TWIN LAKES

@properties | CHRISTIE'S
INTERNATIONAL REAL ESTATE

LP LUXURY
PORTFOLIO
INTERNATIONAL



STEPHANIE PARENT REALTOR

773.209.3465 mobile
steph@atproperties.com
www.stephanieparent.com



MARY BRENNAN AGENT

630.660.7631 mobile
262.348.0200 office
marybrennan@atproperties.com

BRENNAN & PARENT
PROPERTIES

2129 & 2133 E LAKE SHORE DRIVE • TWIN LAKES





EXTERIOR MAIN HOME LAKESIDE



2129 & 2133 E LAKE SHORE DRIVE TWIN LAKES, WI

ROOM DIMENSIONS

Great Room	24'x21'
Family Room	23'x17'
Dining Room	12'x22'
Kitchen	14'x18'
Primary Bedroom	13'x15'
Second Bedroom	13'x19'
Third Bedroom	13'x19'
Fourth Bedroom	12'x15'
Fifth Bedroom	11'x10'
Sixth Bedroom	15'x12'
Seventh Bedroom (no closet)	15'x13'

FEATURES

This is the year to start making memories at the lake. Fabulous lakefront set on 2 acres of secluded property with 100' of flat frontage on Lake Elizabeth with magical sunset views. Main home on the lake has 3 beds and 3.5 baths with an open floorplan with 2 fireplaces with views from most rooms. Patio offers a great entertaining space by the lake with outdoor kitchen. A detached heated garage has a bonus room with full bath and bar. Great space for a bunk room or entertainment. Guest home has 4 bedrooms, with 3 full baths (2 are en-suites) with views of the lake. A second detached garage offers additional parking. There is a lakeside shed for storing your lake toys. The property is set up for a entertaining large groups with plenty of parking. Sale includes 2 tax keys. Fire virtual.

- Beautiful lakefront setting with over 2 acres and 100' of frontage on Lake Elizabeth
- Main home on lake has 3 bedrooms with en-suites and a powder room
- Primary bedroom on the main level with beautiful lake views
- Bonus room above the garage overlooking lake with a full bath
- Guest home with 4 bedrooms and 3 full baths
- 2 detached garages
- Large lakeside stone patio
- 3 fireplaces (2 in main home and 1 in guest home)
- Lakeside shed for all your lake toys



STEPHANIE PARENT REALTOR

773.209.3465 mobile
steph@atproperties.com
www.stephanieparent.com



MARY BRENNAN AGENT

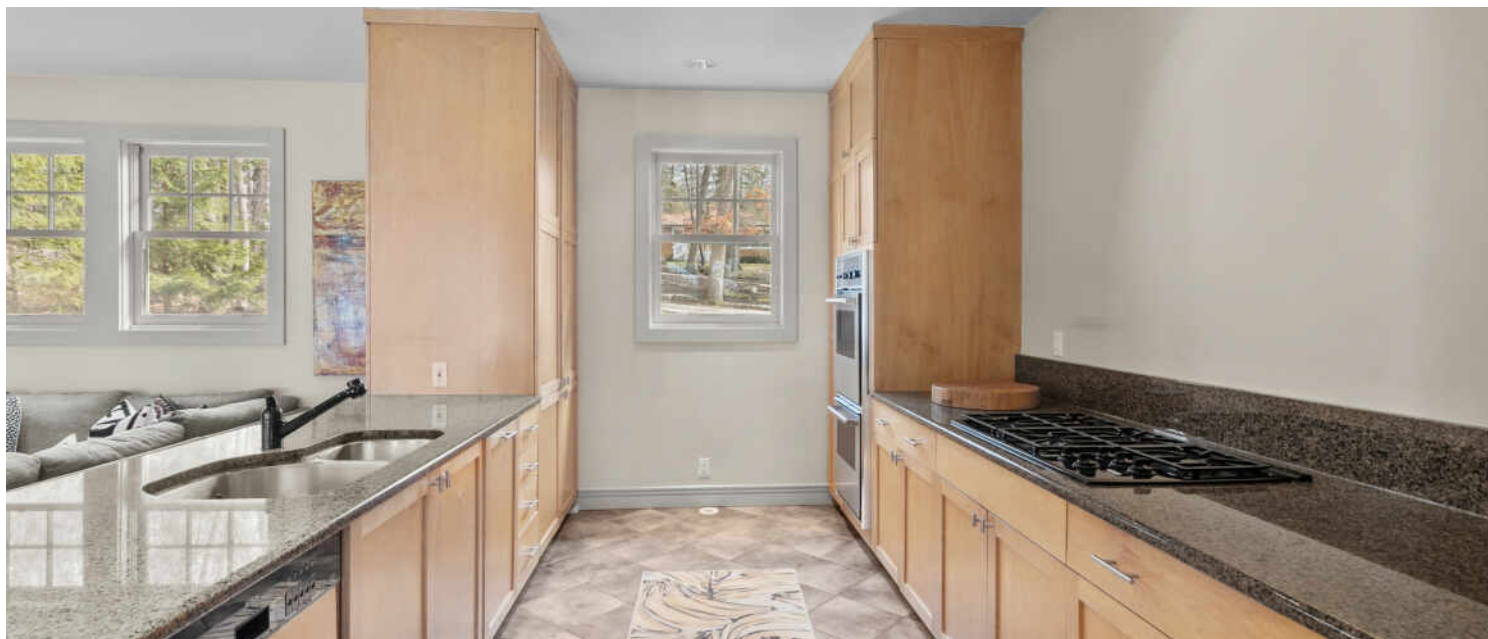
630.660.7631 mobile
262.348.0200 office
marybrennan@atproperties.com



MAIN HOME GREAT ROOM



FAMILY ROOM MAIN HOME



KITCHEN MAIN HOME



KITCHEN OPEN TO FAMILY ROOM MAIN HOME



LOFT MAIN HOME



BREAKFAST NOOK MAIN HOME



PRIMARY BEDROOM MAIN HOME



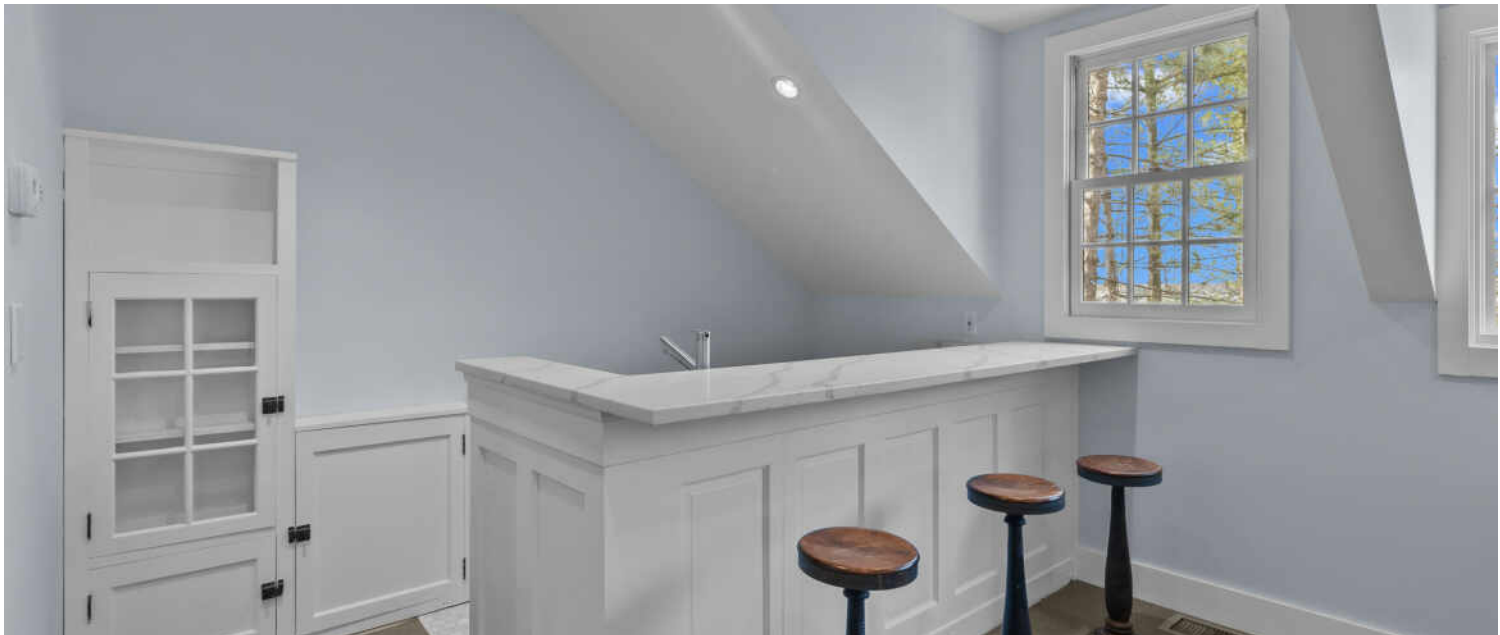
BEDROOM MAIN HOME



BEDROOM MAIN HOME



BONUS ROOM WITH BAR AND FULL BATH



BONUS ROOM WITH VIEWS OF LAKE



GUEST HOME EXTERIOR



GUEST HOME EXTERIOR LAKESIDE



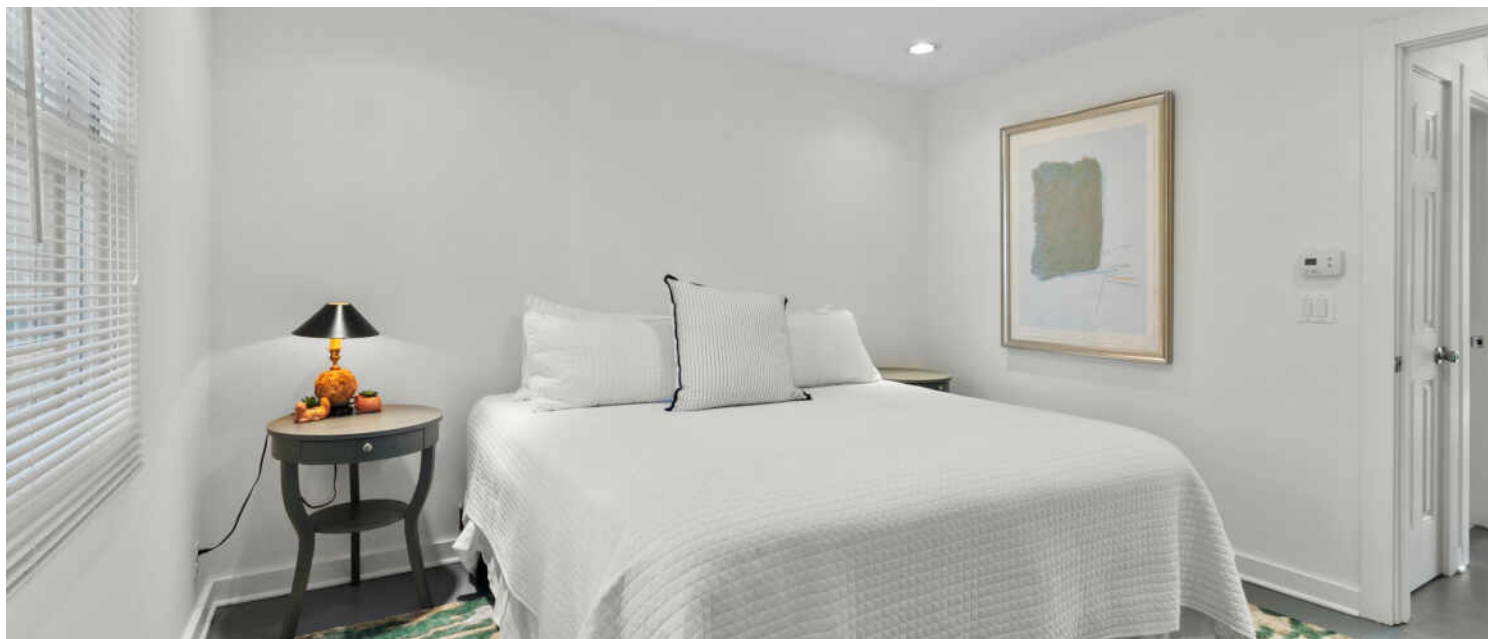
GUEST HOME KITCHEN



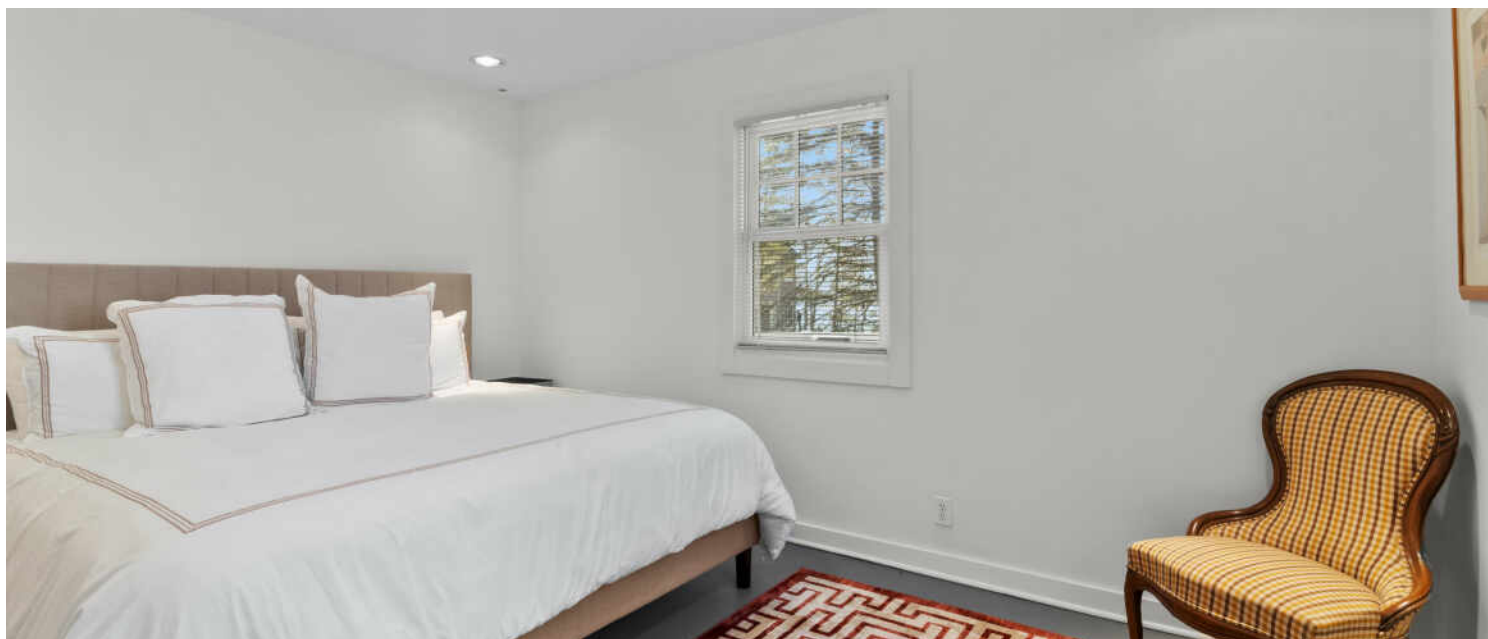
GUEST HOME VAULTED CEILINGS



GUEST HOME FAMILY ROOM



GUEST HOME BEDROOM



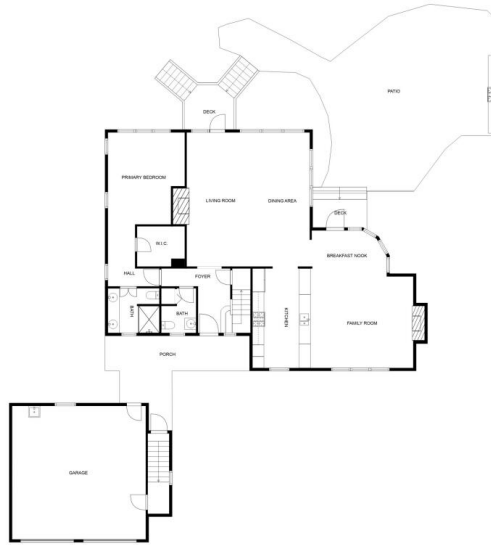
GUEST HOME BEDROOM



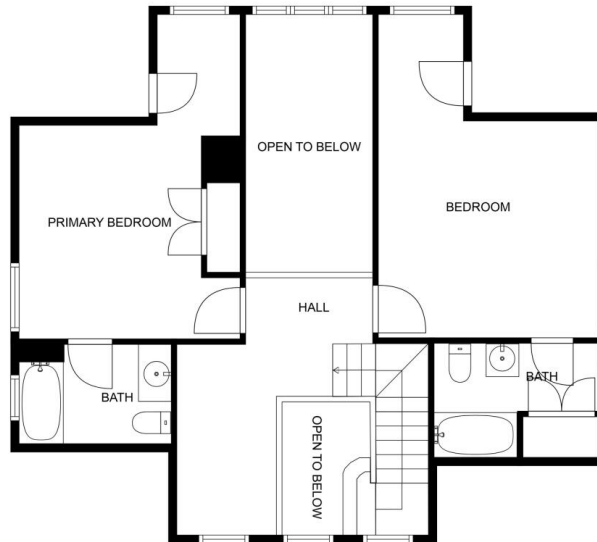
GUEST HOME PRIMARY BEDROOM WITH EN-SUITE



GUEST BEDROOM WITH EN-SUITE (NO CLOSET)

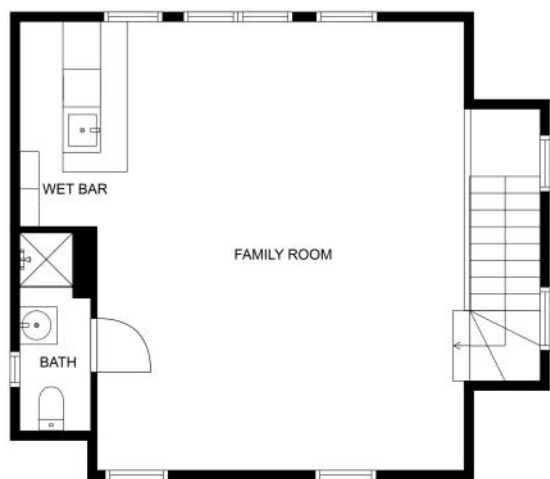


MEASUREMENTS ARE CALCULATED BY CUBICASA TECHNOLOGY, DEEMED HIGHLY RELIABLE BUT NOT GUARANTEED.



MEASUREMENTS ARE CALCULATED BY CUBICASA TECHNOLOGY, DEEMED HIGHLY RELIABLE BUT NOT GUARANTEED.





MEASUREMENTS ARE CALCULATED BY CUBICASA TECHNOLOGY. DEEMED HIGHLY RELIABLE BUT NOT GUARANTEED.



MEASUREMENTS ARE CALCULATED BY CUBICASA TECHNOLOGY. DEEMED HIGHLY RELIABLE BUT NOT GUARANTEED.





NAMED AFTER LAKE MARY AND LAKE ELIZABETH, **TWIN LAKES** IS A POPULAR DESTINATION FOR RECREATION ENTHUSIASTS.

Locals love a variety of recreational opportunities along with local events and entertainment, including the Aquanut Water Shows.

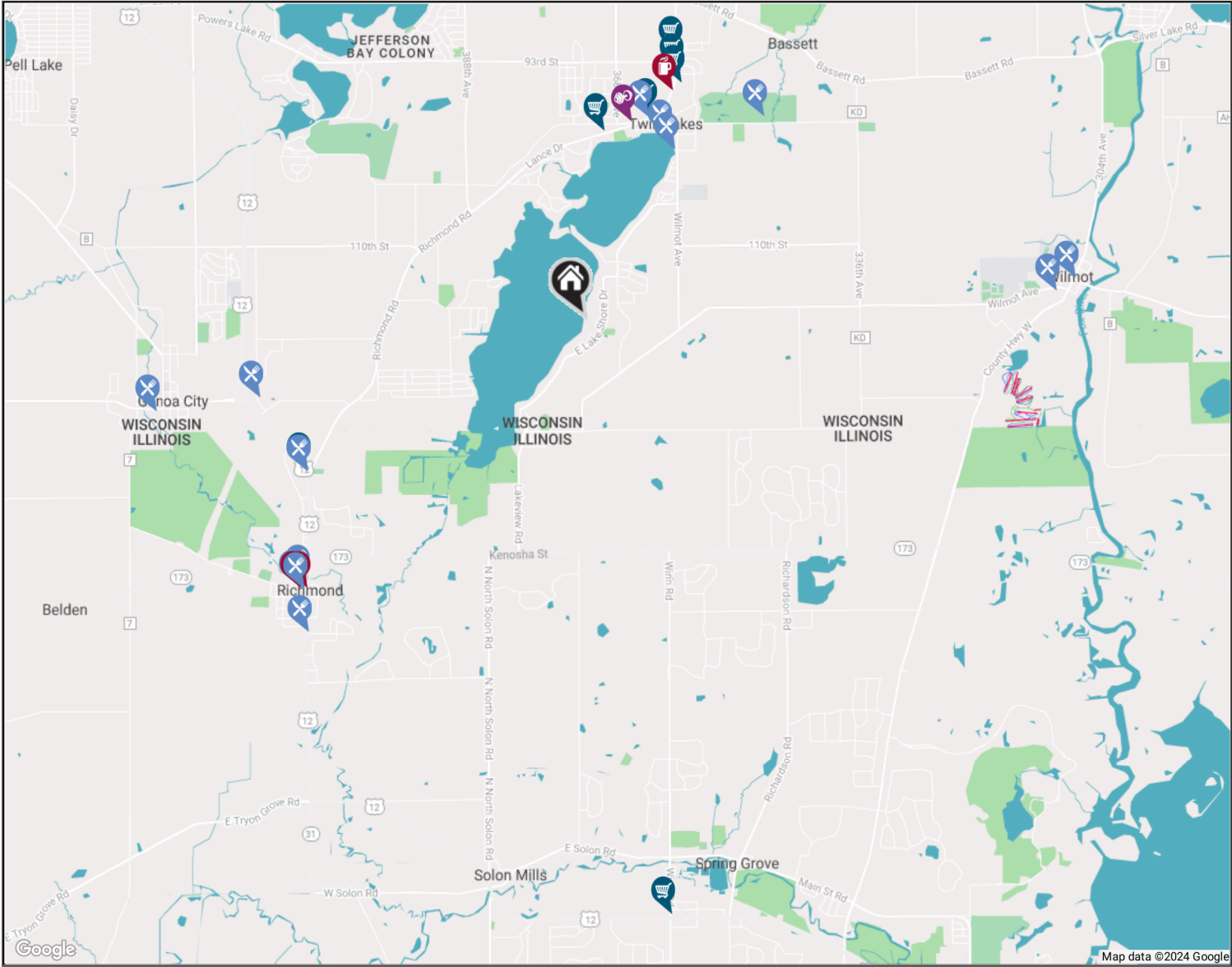
Spanning nearly 1,000 acres, the lakes attract residents and visitors with a variety of aquatic activities including boating, waterskiing, swimming, and fishing. The community is also home to a number of parks, athletic fields, picnic areas, and hiking trails as well as the Twin Lakes Country Club, which welcomes golfers of all skill levels.

Twin Lakes holds a number of annual events, headlined by the Aquanuts Water Show at Lance Park. The free show takes place every week of the summer, dazzling spectators with impressive water acrobatics. The amphitheater at Lance Park is also the site of Movies in the Park, which features outdoor movies at dusk.

NEIGHBORHOOD GUIDE MAP

2129 & 2133 E LAKE SHORE DRIVE

22



NEIGHBORHOOD GUIDE



RESTAURANTS

Wild Child's Tavern & Grill
511 WILMOT AVE, 1.6 MI

Bodi's Bake Shop
306 E MAIN ST, 1.7 MI

Manny's Snack Shack
404 S LAKE AVE, 1.7 MI

Twin Lakes Country Club
1230 LEGION DRIVE, 2.2 MI

American Cafe
11302 U.S. 12, 2.6 MI

Herner's Hideaway
202 WILLIAMS ROAD, 2.8 MI

Doyle's Pub
5604 MILL STREET, 3.1 MI

Paisano's On Broadway Italian
Steakhouse
5614 BROADWAY ROAD, 3.2 MI

Seaside Prime Steak & Seafood
by Paisano's
5628 BROADWAY ROAD, 3.2 MI

Rosati's Pizza
10004 NORTH MAIN STREET, 3.4 MI

Fitzgerald's Genoa Junction
727 MAIN STREET, 3.6 MI

Hansen's Ice Cream Parlor -
Wilmot
30807 114TH ST, 3.9 MI

Wilmot Stage Stop
30646 113TH STREET, 4.1 MI



COFFEE SHOPS

Cup O' Joe Coffee House
406 NORTH LAKE AVENUE, 2.0 MI

Sweet Angeline's Bake Shop
and Gourmet Cafe
5626 BROADWAY ROAD, 3.2 MI

Main Street Coffee Co.
10321 NORTH MAIN STREET, 3.2 MI



SHOPPING

Twin Lakes Marine Inc
134 LANCE DRIVE, 1.6 MI

Birch on Main (formerly Adcock
Farm + Co)
334 E MAIN ST, 1.8 MI

Ace Hardware and Rental
470 NORTH LAKE AVENUE, 2.1 MI

Berkot's Super Foods
600 N LAKE AVE, 2.2 MI

Dollar General
740 NORTH LAKE AVENUE, 2.3 MI

International House of Wine
and Cheese
11302 U.S. 12, 2.6 MI

Walgreens
7880 WINN ROAD, 4.9 MI



HEALTH CLUBS

Twin Lakes Fitness
202 EAST MAIN STREET, 1.7 MI

