

212 BRIAR RIDGE LANE
LAKE VILLA

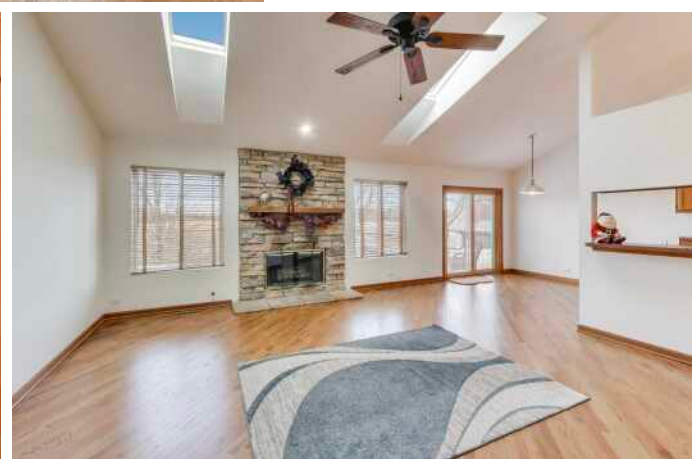
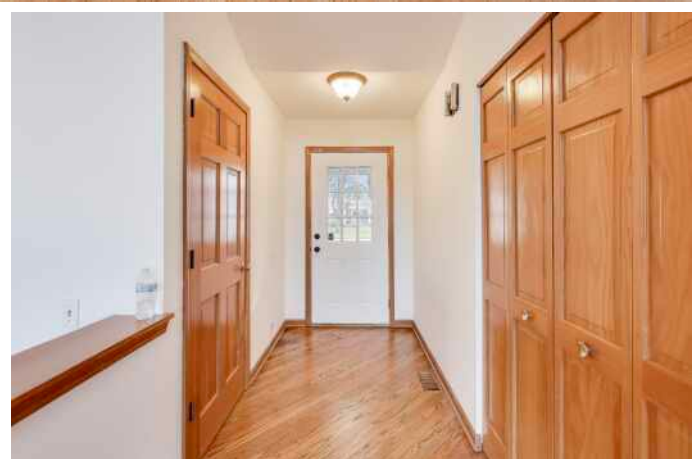
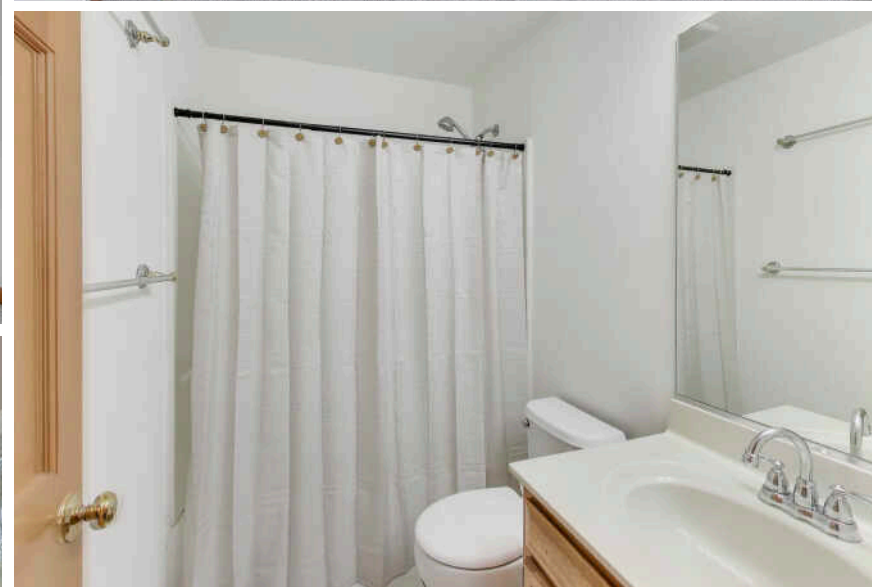


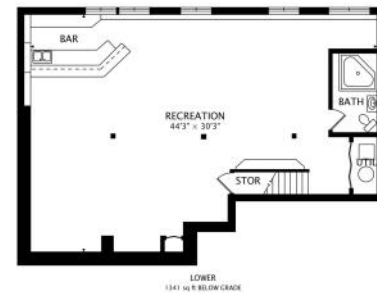
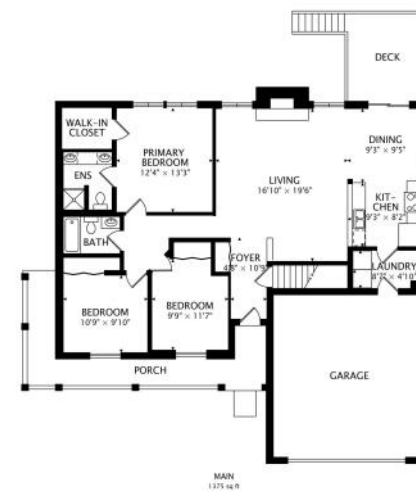


YOUR DREAM HOME AWAITS: RANCH LIVING IN SAVANNA SPRINGS

Welcome to this move-in ready 3 bed, 3 bath ranch home in the Savanna Springs subdivision. The home features a spacious and open layout with freshly refinished hardwood floors, brand new carpet, and fresh paint throughout. Main level offers a bright living area with a cozy stone fireplace and easy access to a brand-new deck overlooking mature trees and a private fenced in yard. The kitchen and dining spaces flow seamlessly, perfect for both everyday living and entertaining. The fully finished basement is complete with a pool table, bar area, darts, TV, and a full bathroom with a Jacuzzi tub. Additional highlights include a brand-new furnace and A/C system for comfort and efficiency. The property also features a two-car garage and excellent curb appeal. Enjoy suburban living with nearby parks, trails, shopping, transportation, and easy access to I-90.

3 BEDROOM
3 BATH
TAXES: \$8,273
ASSESSMENTS: \$320 / YEAR







RAILROAD SERVICE AND THE ALLURE OF LAKESIDE LIVING DREW CHICAGOANS TO THE **LAKE VILLA** AREA

Located about 50 miles northwest of Chicago, the village was incorporated in 1901. Today it's home to more than 8,000 residents and a lot of lakes.

Residents enjoy several parks and recreational areas. The community hosts a number of events every year including the Memorial Day Parade. Forest preserves, swimming areas, boat launches, and trails make this a scenic destination.

Homes here include a variety of styles from ranches and traditional homes to Colonials.

Commuting downtown is convenient with the Lake Villa Metra station and nearby Tri-State Tollway.



GABRIELA PATTISON

1 3129335002

847-381-0300

GABRIELAPATTISON@ATPROPERTIES.COM



All specifications, features, designs, price, assessments, taxes and materials are subject to change without notice. Depicted floor plans and architectural renderings are only an artist's impression.

