

212 LONDONDERRY COURT

LOCH LOMOND - MUNDELEIN





ROOM DIMENSIONS

LIVING ROOM : 20' × 13'

DINING ROOM : 12' × 11'

FAMILY ROOM : 26' × 11'

KITCHEN : 13' × 11'

PRIMARY BEDROOM : 13' × 12'

SECOND BEDROOM : 13' × 11'

THIRD BEDROOM : 11' × 10'

FOURTH BEDROOM : 10' × 9'

DECK : 29' × 20'

4 BEDROOM

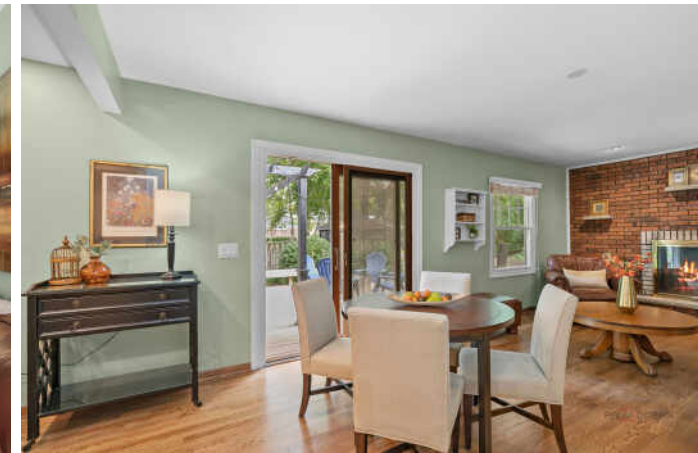
2.1 BATH

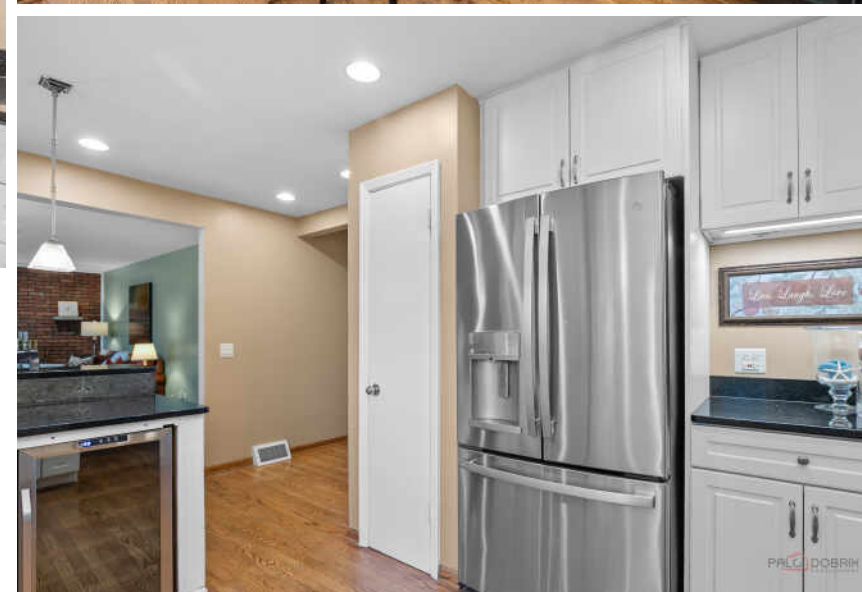
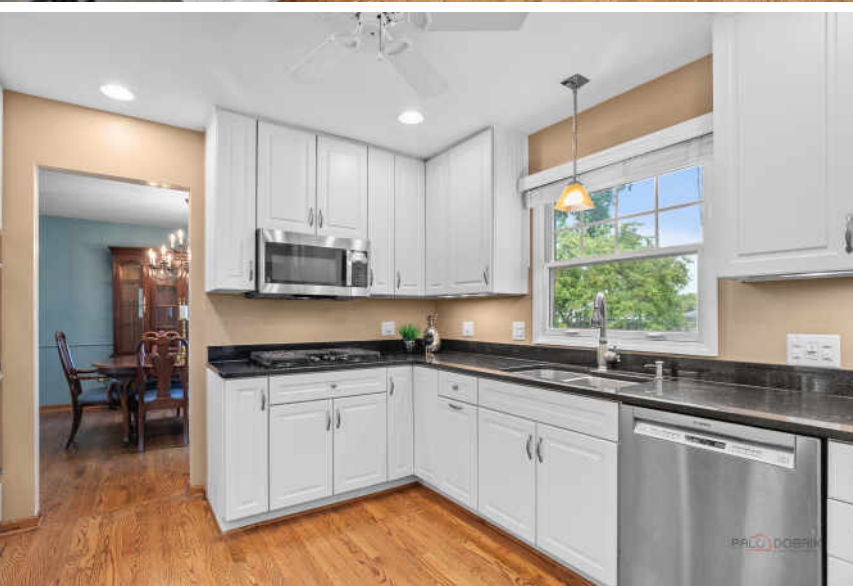
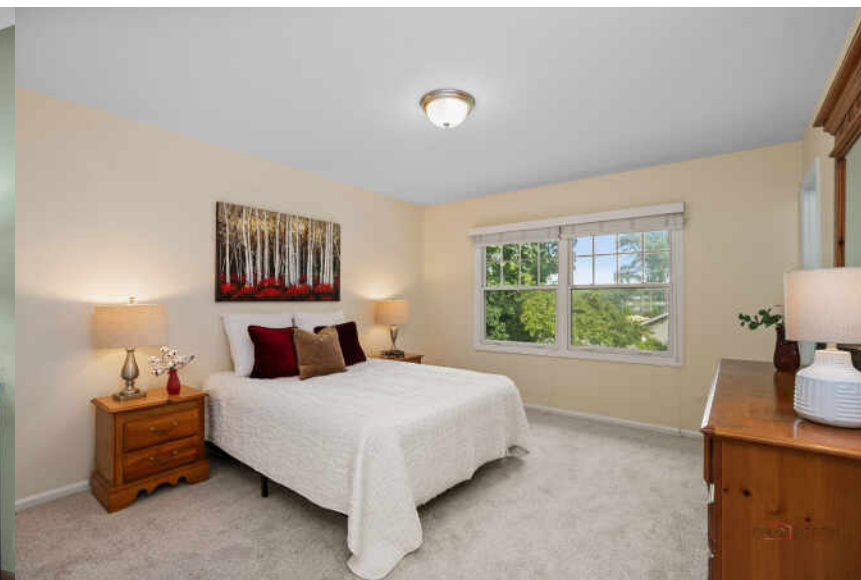
TAXES: \$9,861

ASSESSMENTS: \$350 / YEAR

YOUR MEMBERSHIP TICKET TO A VERY SPECIAL LAKE COMMUNITY

Nestled in the heart of the sought-after Loch Lomond neighborhood, this home offers more than just a place to live-it offers a lifestyle. Loch Lomond is a peaceful, tight-knit community conveniently close to everything, yet you'll feel like you're a world away. At its heart is a scenic 75-acre lake with two private beaches, where residents enjoy fishing, swimming, paddling, boating, and-most importantly-well-kept spaces to gather with neighbors and family. Located just around the corner from South Beach, this home even offers peek-a-boo views of the water from the deck and primary bedroom window. Tucked away on a quiet cul-de-sac, the welcoming front porch sets the tone for the warmth inside. The main level features hardwood floors throughout, a spacious living room, and a formal dining room for special occasions. The updated kitchen boasts white 42" cabinets, black granite counters, stainless steel appliances, and a cozy breakfast bar for casual meals. The adjoining eating area opens to an oversized deck complete with a string-light pergola-perfect for outdoor dining and entertaining-with plenty of additional space for a firepit or lounge area. Upstairs, you'll find freshly painted and carpeted bedrooms, highlighted by a primary suite with private bath, plus three additional generously sized bedrooms. The full basement is ready to be finished and customized to your needs. All of this in a prime location-just minutes from Mundelein High School, local elementary schools, Fremont Public Library, Barefoot Bay Waterpark, Mundelein Park District sports fields, shopping, dining, Metra stations, medical services, and golf courses. Don't miss the chance to experience lake community living at its best!







LOCATED IN THE HEART OF LAKE COUNTY,
MUNDELEIN IS A THRIVING COMMUNITY
THAT CONTINUES TO GROW DUE TO ITS
ABUNDANT RECREATIONAL
OPPORTUNITIES, FRIENDLY COMMUNITY,
AND CONVENIENT TRANSPORTATION
OPTIONS.

Mundelein celebrates its history with a popular annual festival that includes musical performances, a parade, carnival, car show, fireworks, and more. The village also has a craft beer festival, farmers market, and an art festival.

Once a popular resort area for city dwellers looking to escape the heat, Diamond Lake remains one of the village's gems. The recreation area, one of 33 in the community, stretches over 100 acres with a pristine lake, sandy beaches, and shaded picnic areas as well as a floating sports park, paddle boat, and kayak rentals.

In addition to the beach, residents can enjoy a golf course, bike trails, community theater, and museum. The village's downtown area has been redeveloped and there are various commercial areas.

Residential areas include a diverse mix of housing styles including new construction and mixed-use developments.



NOTES _____



KRYSTYNA FRITZ

(847) 894-1381

KFRITZ@ATPROPERTIES.COM

WWW.KRYSTYNAFRITZ.COM



All specifications, features, designs, price, assessments, taxes and materials are subject to change without notice. Depicted floor plans and architectural renderings are only an artist's impression.

