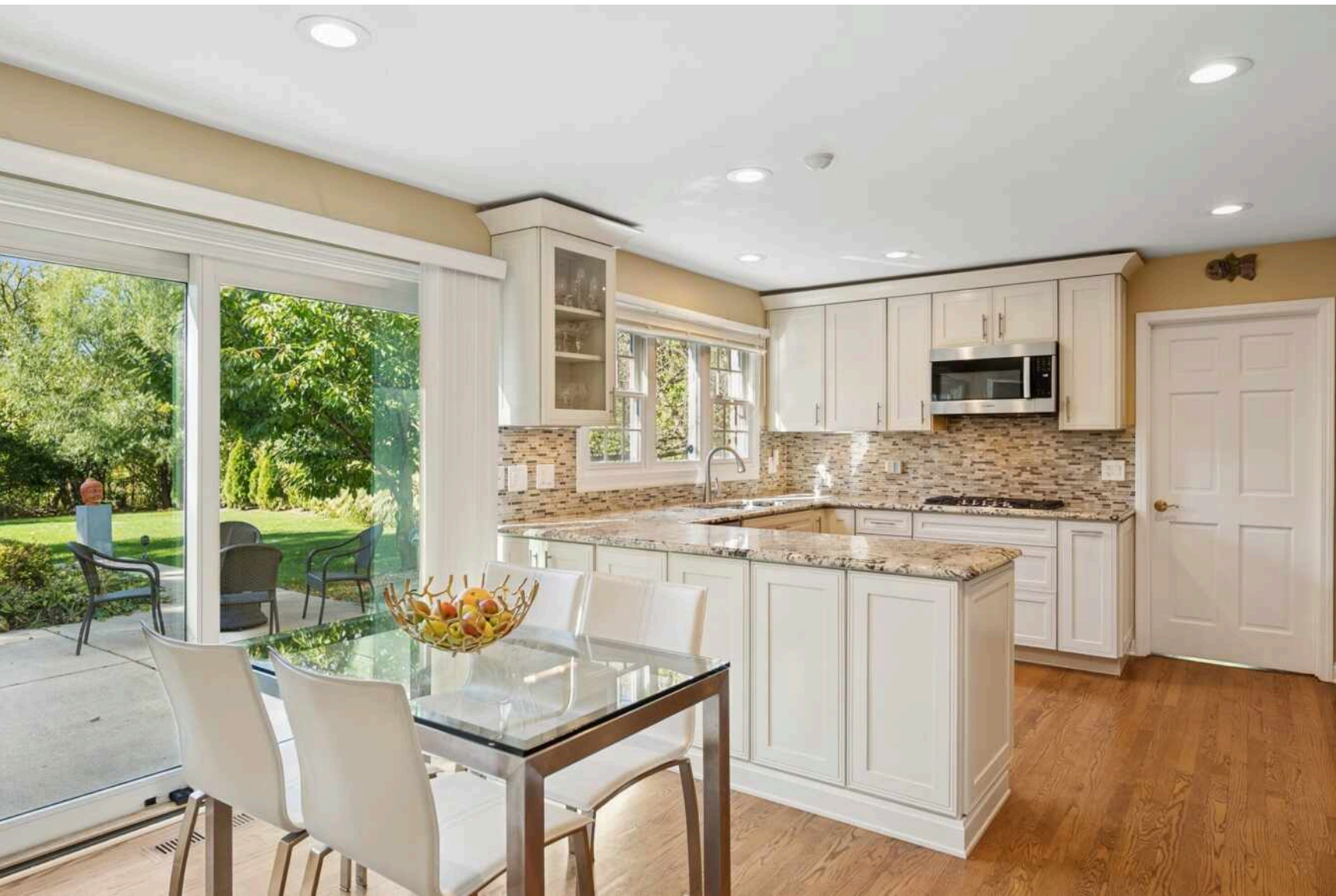


2130 MAGNOLIA LANE  
HIGHLAND PARK

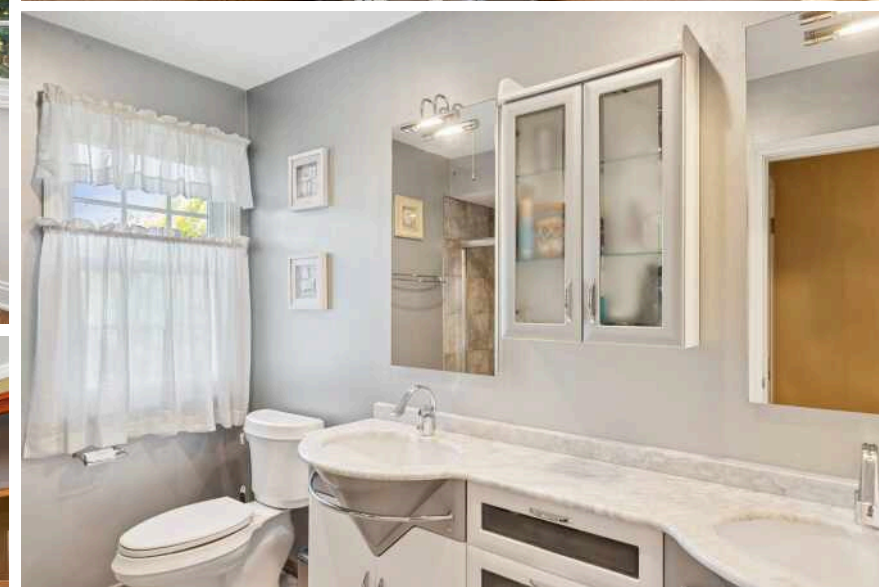


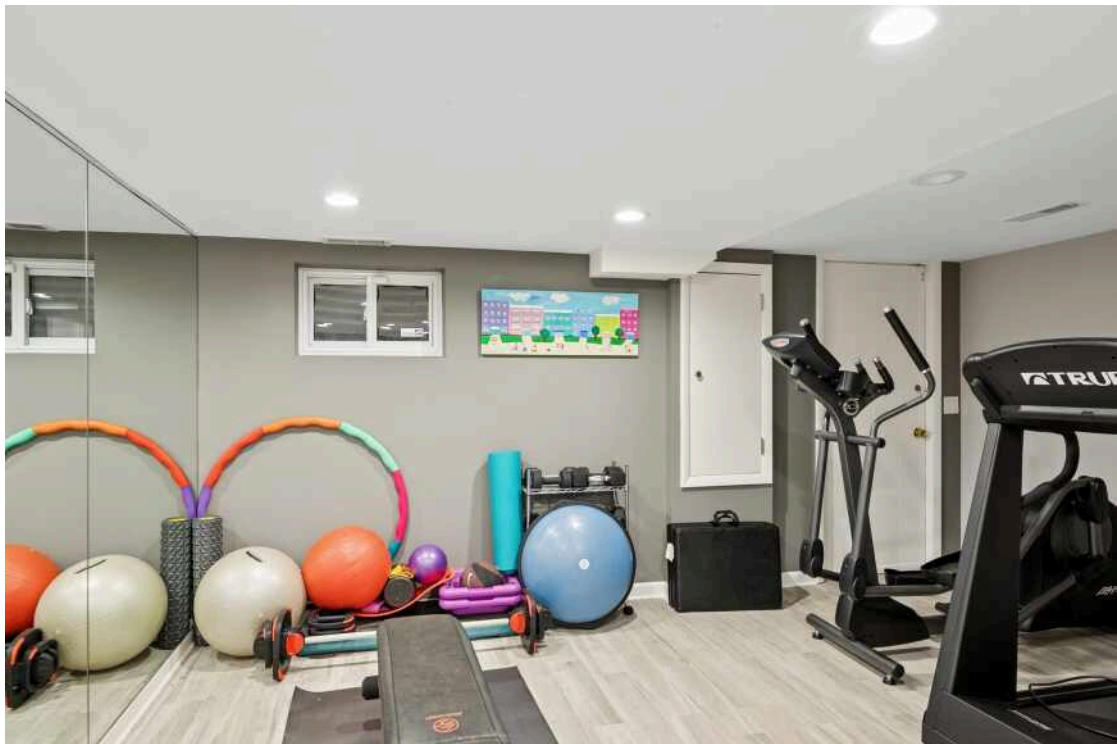


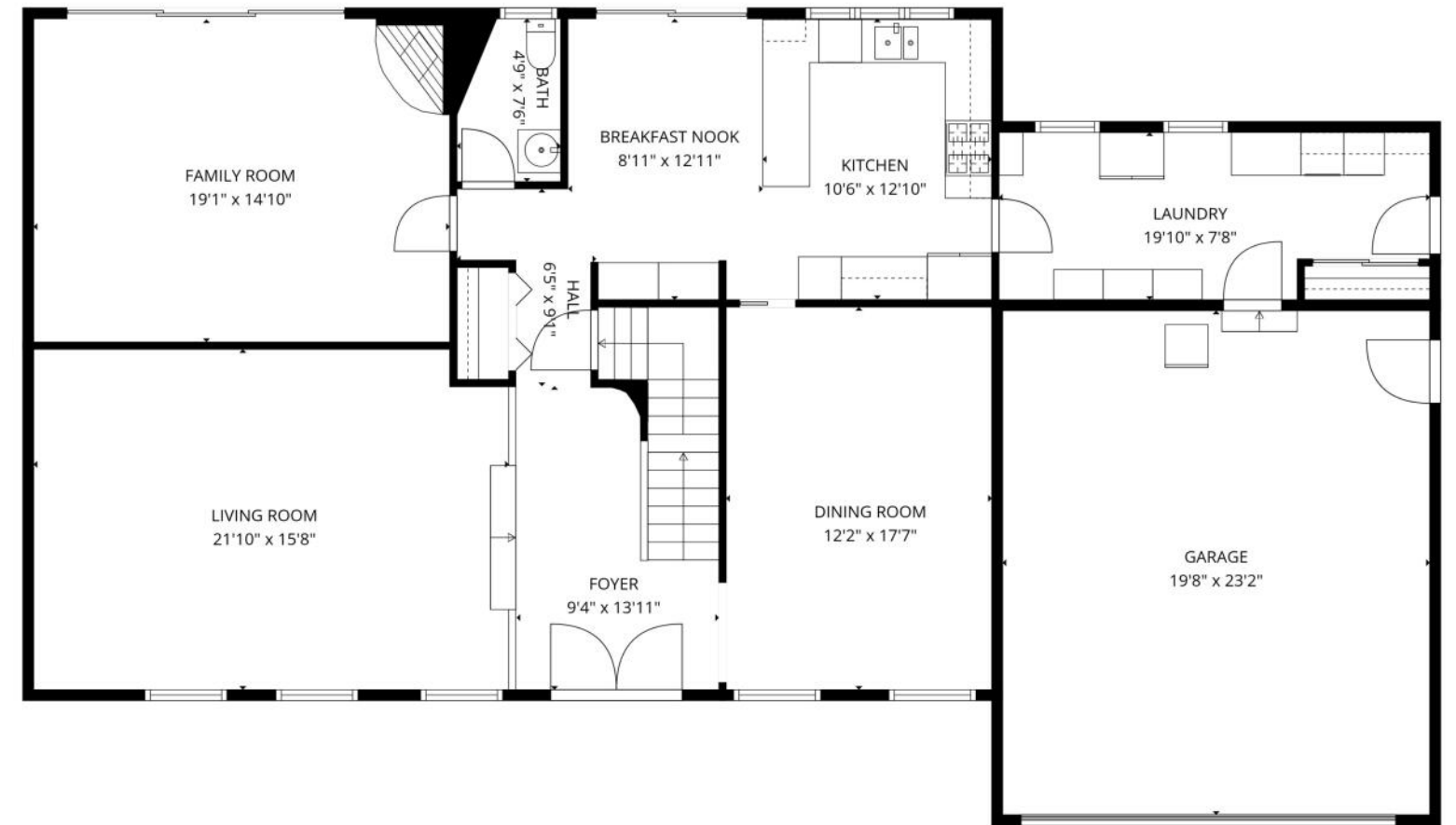
- This beautifully maintained and recently updated home offers 4 spacious bedrooms and 2 full bathrooms, along with a convenient half bath.
- Additionally, there's an extra bedroom and bathroom in the basement, perfect for guests or a private retreat.
- The house features a formal living room, a cozy family room, an eat-in kitchen, and a practical mudroom, providing ample space for everyday living and entertaining.
- This home also includes hardwood floors throughout, a sprinkler system, epoxy floors in the garage and so much more.
- Situated on a quiet horseshoe street, the property sits on nearly an acre of land, offering privacy and tranquility.
- The backyard is a true oasis, boasting a deep pool with a diving board, surrounded by mature trees that create a serene, retreat-like atmosphere.
- This meticulous home blends comfort, style, and lush outdoor living in a peaceful setting, ideal for relaxation and entertaining alike.





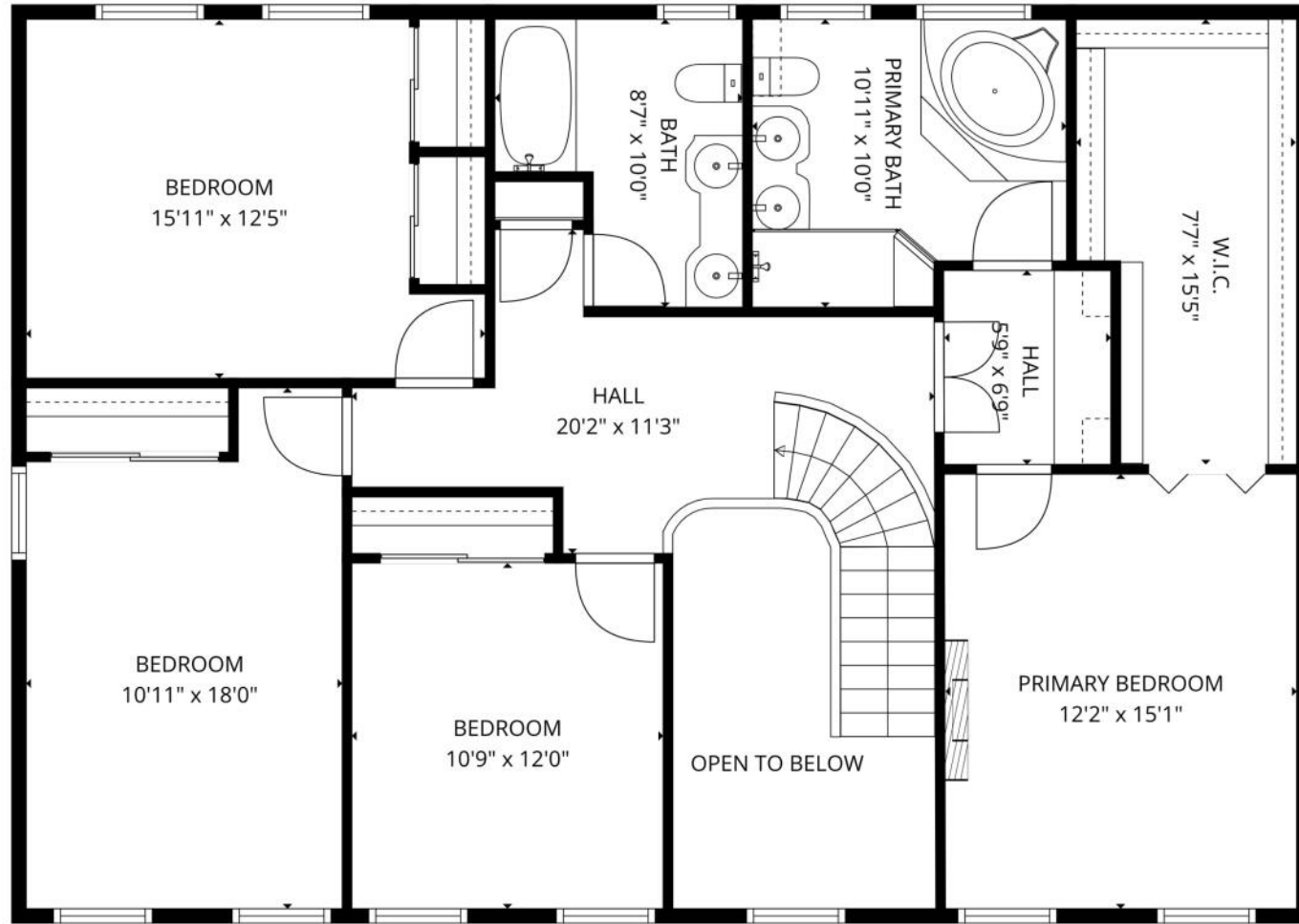






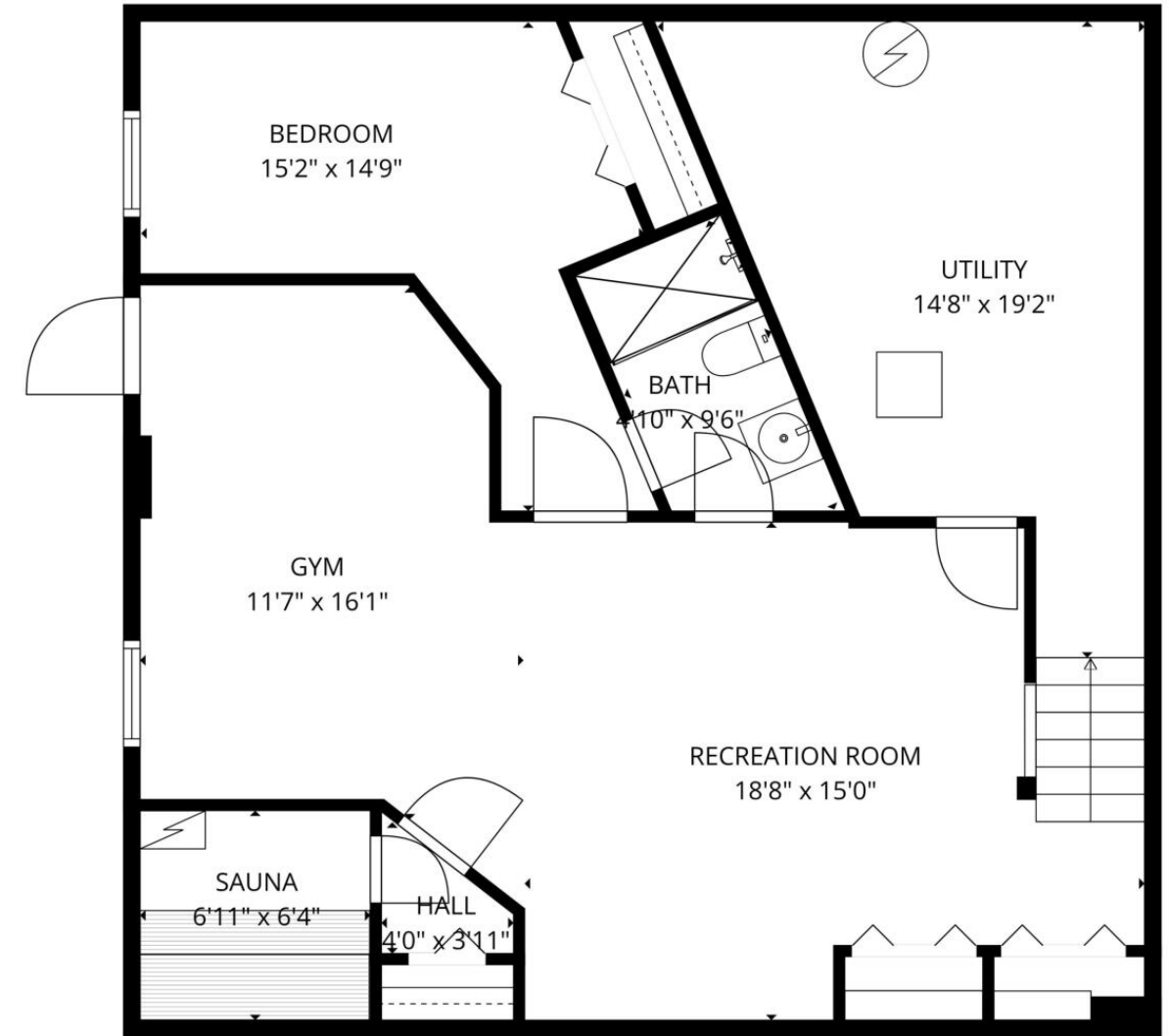
**TOTAL: 3491 sq. ft**  
 BELOW GRADE: 724 sq. ft, FLOOR 2: 1511 sq. ft, FLOOR 3: 1256 sq. ft  
 EXCLUDED AREAS: UTILITY: 188 sq. ft, GARAGE: 454 sq. ft, OPEN TO BELOW: 97 sq. ft,  
 WALLS: 258 sq. ft

FLOOR PLAN CREATED BY CUBICASA APP. MEASUREMENTS DEEMED HIGHLY RELIABLE BUT NOT GUARANTEED.



**TOTAL: 3491 sq. ft**  
 BELOW GRADE: 724 sq. ft, FLOOR 2: 1511 sq. ft, FLOOR 3: 1256 sq. ft  
 EXCLUDED AREAS: UTILITY: 188 sq. ft, GARAGE: 454 sq. ft, OPEN TO BELOW: 97 sq. ft,  
 WALLS: 258 sq. ft

FLOOR PLAN CREATED BY CUBICASA APP. MEASUREMENTS DEEMED HIGHLY RELIABLE BUT NOT GUARANTEED.



**TOTAL: 3491 sq. ft**  
 BELOW GRADE: 724 sq. ft, FLOOR 2: 1511 sq. ft, FLOOR 3: 1256 sq. ft  
 EXCLUDED AREAS: UTILITY: 188 sq. ft, GARAGE: 454 sq. ft, OPEN TO BELOW: 97 sq. ft,  
 WALLS: 258 sq. ft

FLOOR PLAN CREATED BY CUBICASA APP. MEASUREMENTS DEEMED HIGHLY RELIABLE BUT NOT GUARANTEED.



## TED PICKUS

1 8474170520

847-432-0700

TEDPICKUS@ATPROPERTIES.COM



## LISA SCHULKIN

1 8476021112

847-432-0700

LSCHULKIN@ATPROPERTIES.COM

---

---

# TED PICKUS

TEAM

---

---