



213 S BODIN STREET HINSDALE



213 S BODIN STREET
HINSDALE

LUXURY
PORTFOLIO
INTERNATIONAL

213SBODIN.INFO

@properties



BRYAN BOMBA BROKER

630.286.9242 mobile
bryan@bryanbomba.com
www.hinsdalearearealestate.com



Bryan
Bomba
Group

213 S BODIN STREET
HINSDALE





213 S BODIN STREET EXTRAORDINARILY WELL-LOCATED IN THE MADISON GRADE SCHOOL NEIGHBORHOOD ON A 60' WIDE LOT!

ROOM DIMENSIONS

Foyer	13'x13'
Living Room	14'x12'
Dining Room	14'x14'
Kitchen	15'x11'
Breakfast Room	20'x10'
Family Room	20'x15'
Mud Room	6'x5'
Primary Bedroom	17'x14'
Second Bedroom	15'x12'
Third Bedroom	14'x11'
Fourth Bedroom	12'x12'
Laundry Room	8'x6'
Fifth Bedroom	16'x13'
Recreation Room	38'x20'
Office	13'x13'

FEATURES

Extraordinarily well-located in the Madison grade school neighborhood. Easy walkability to two Metra train stations. It's on a great-looking block comprised of like-kind homes. Come see the huge difference caused by being on a 60 foot wide lot. It's 20% wider than a 50 footer, but the improvement in the floor plan is significant. Great condition as it has been gently lived in.



BRYAN BOMBA BROKER

630.286.9242 mobile

bryan@bryanbomba.com
www.hinsdalearearealestate.com



Bryan
Bomba
Group











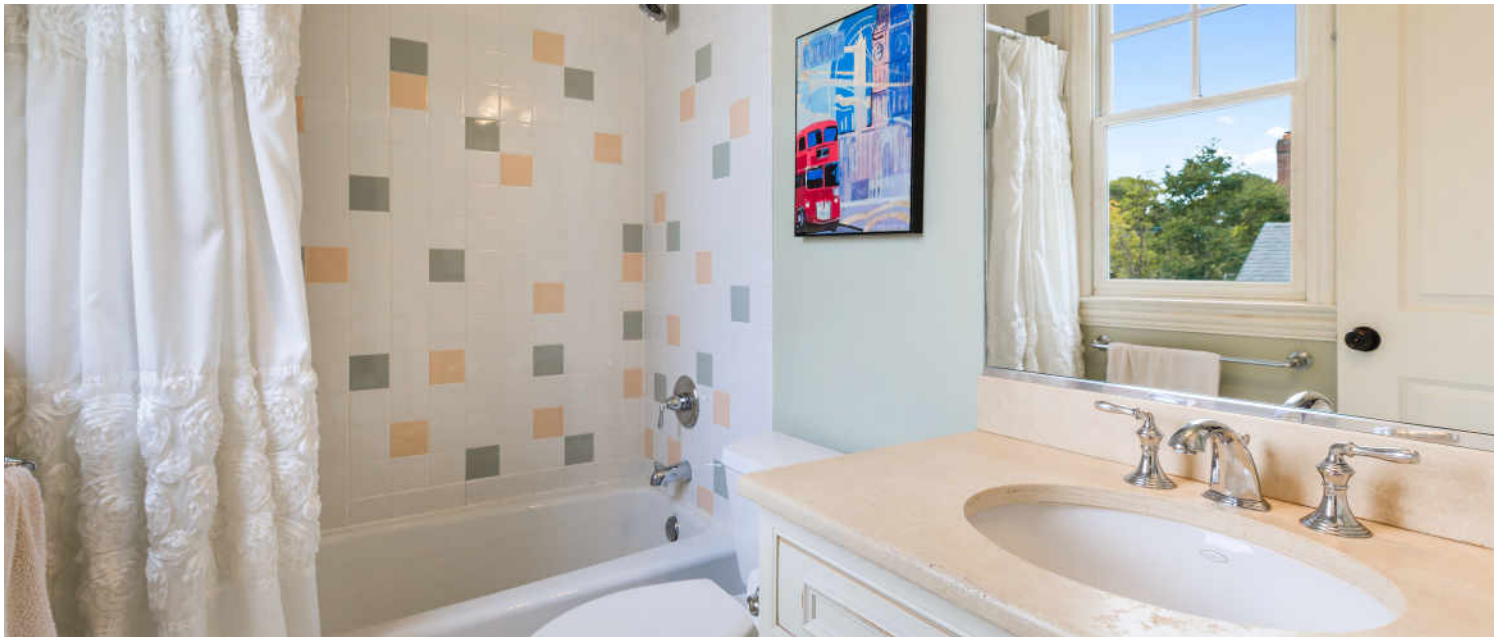








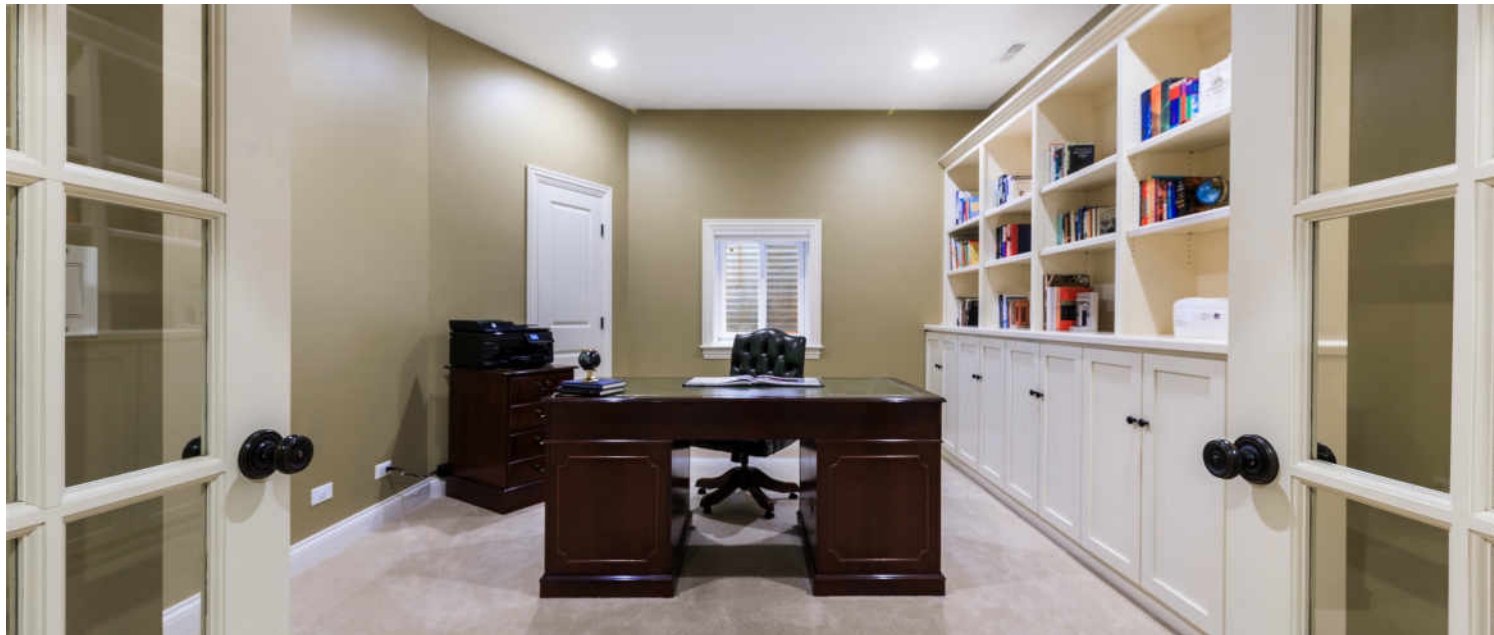




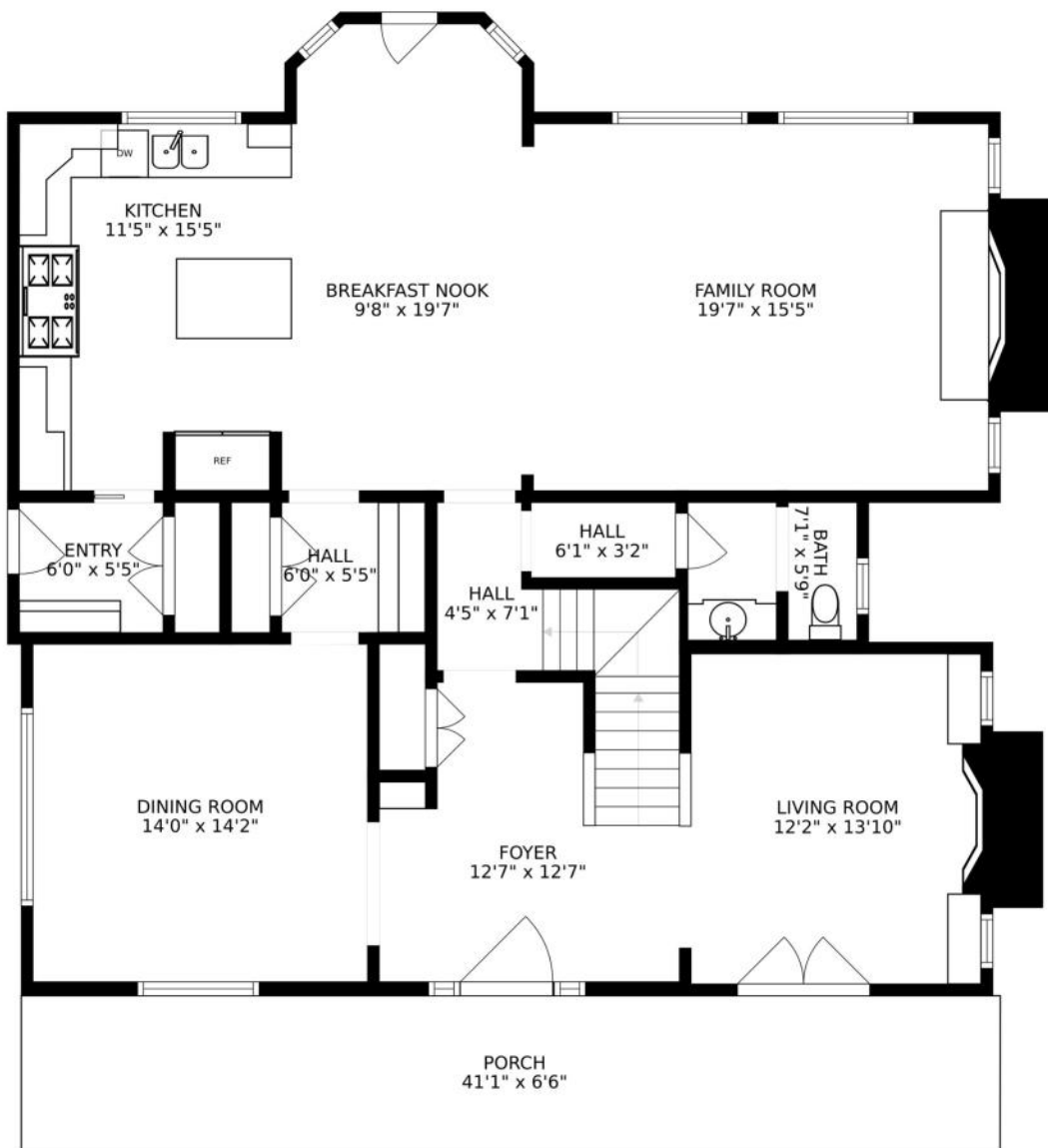


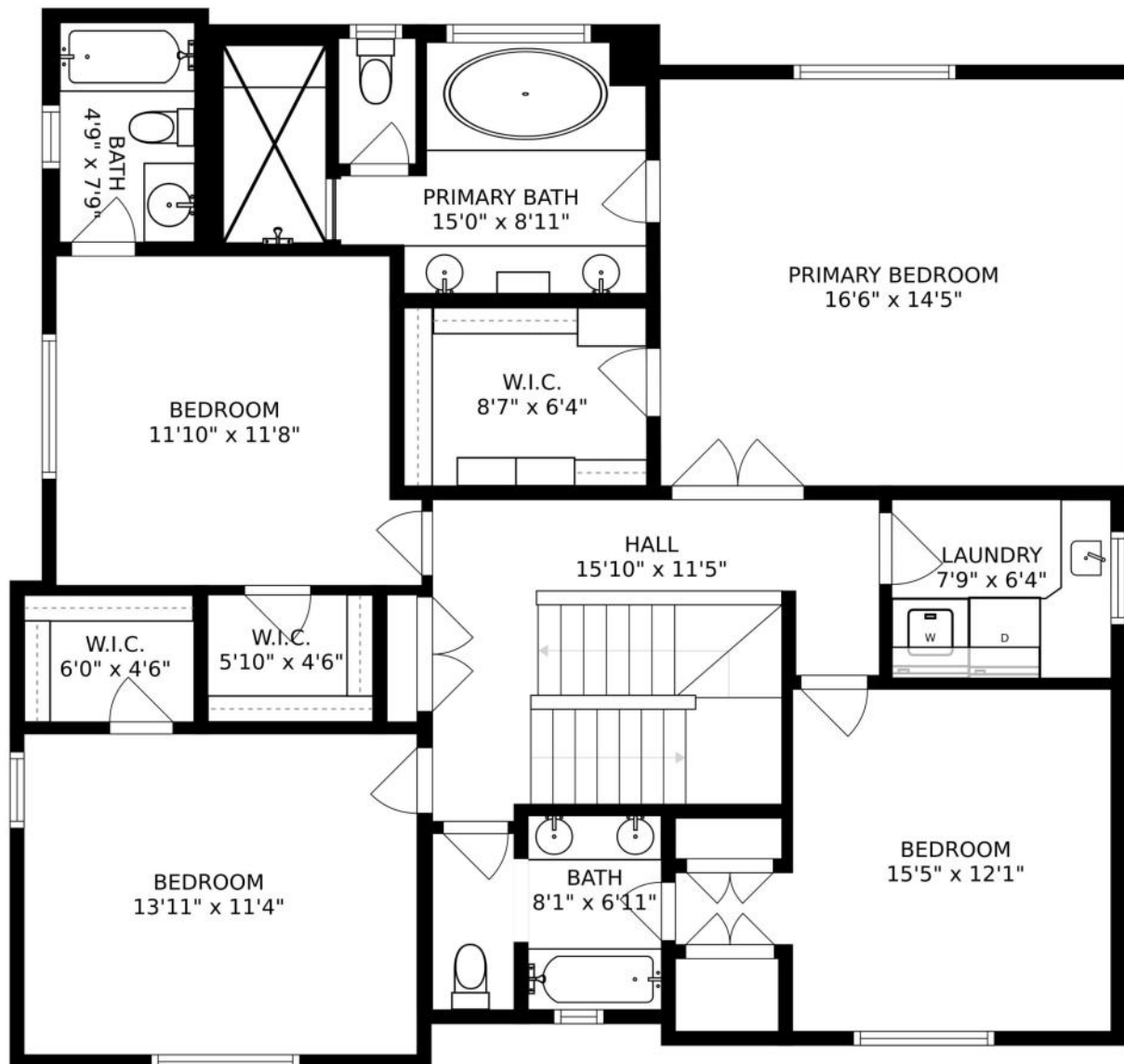


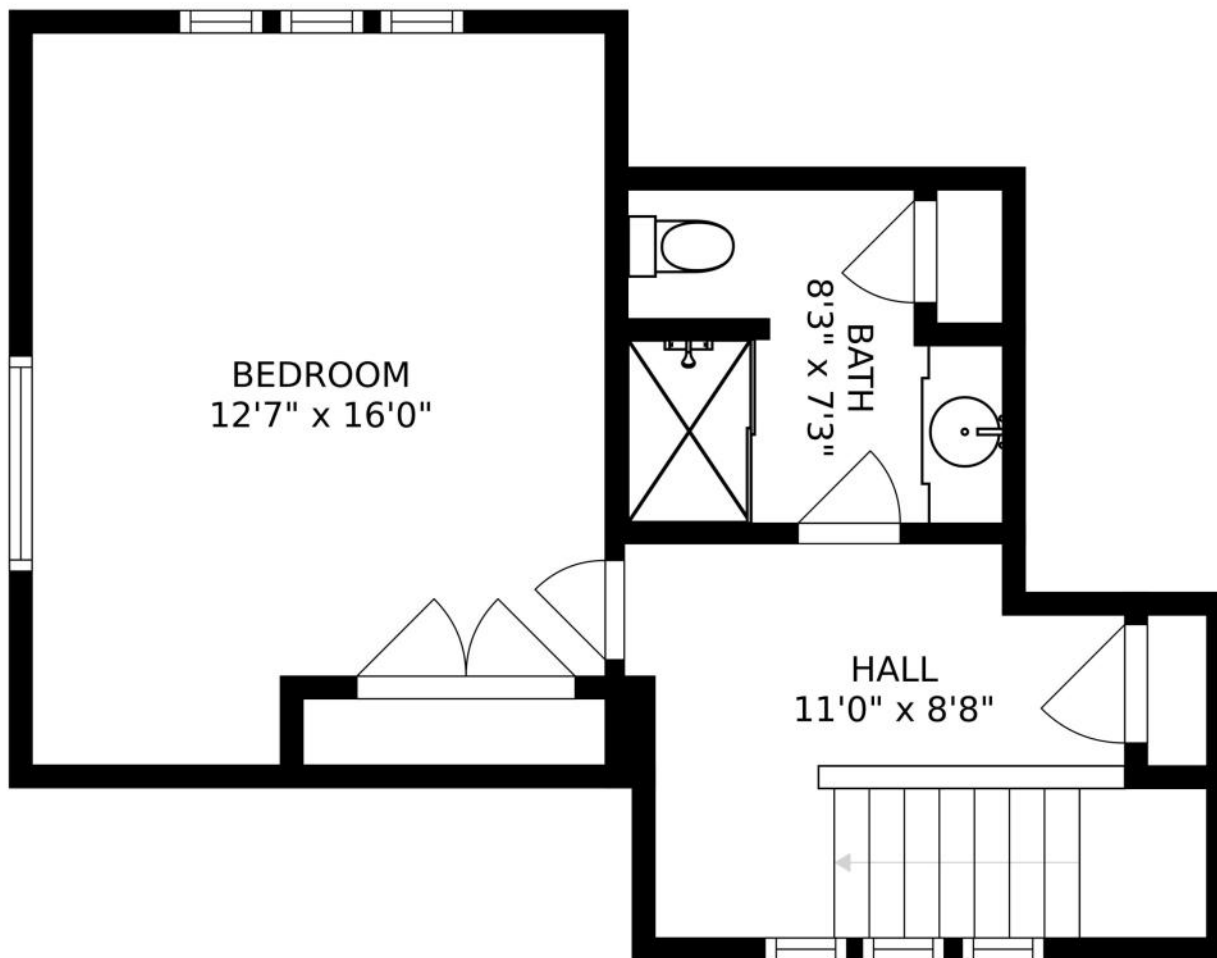


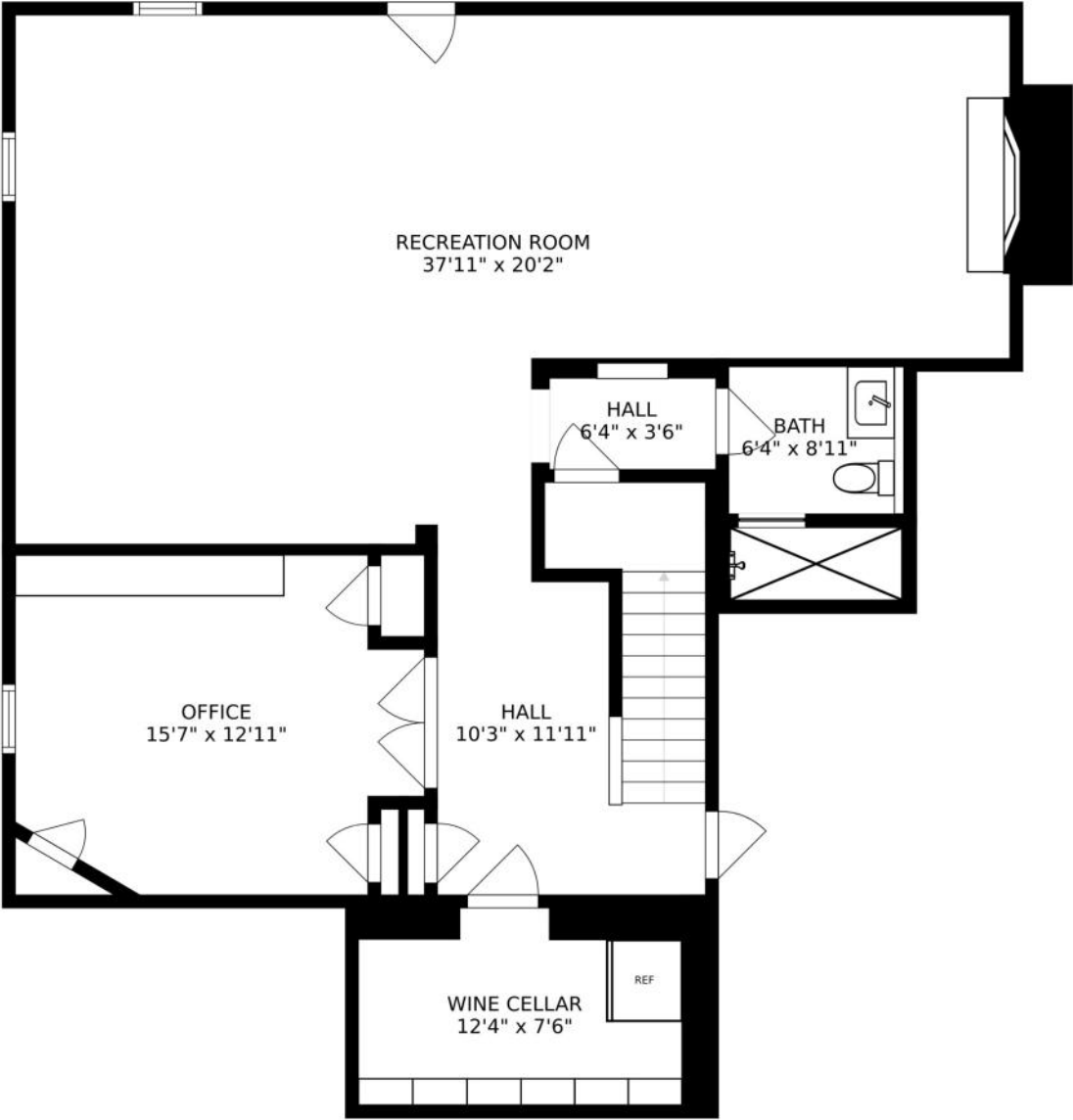


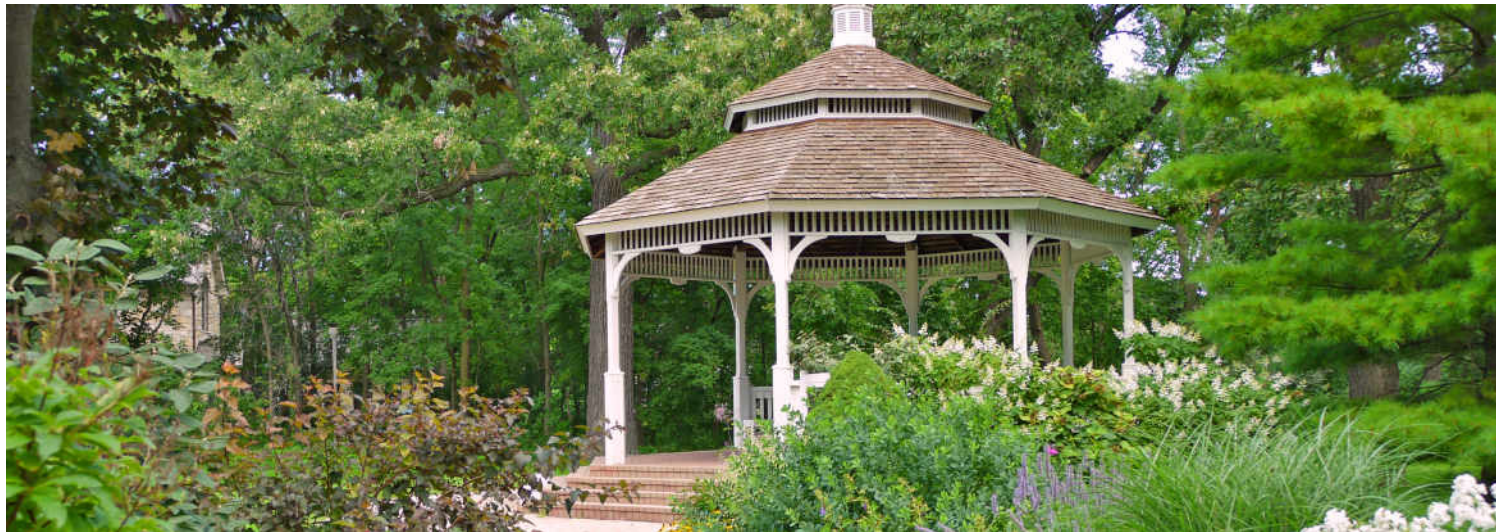












HINSDALE’S HISTORIC DOWNTOWN AND BEAUTIFUL HOMES ATTRACT SOME OF THE STATE’S MOST AFFLUENT RESIDENTS, EARNING THE SUBURB ITS RANKING AS ONE OF THE WEALTHIEST ZIP CODES IN ILLINOIS

Locals love the natural beauty and historic elegance of Hinsdale, which boasts a number of scenic parks and architectural landmarks.

A walk through downtown Hinsdale is a step back in time. The downtown district is on the National Register of Historic Places with several historic buildings dating back to before the community was incorporated in 1873.

The community has a wealth of amenities including the Katherine Legge Memorial Park and Lodge and Hinsdale Community Swimming Pool. There are also numerous parks and athletic facilities including tennis courts, baseball and soccer fields.

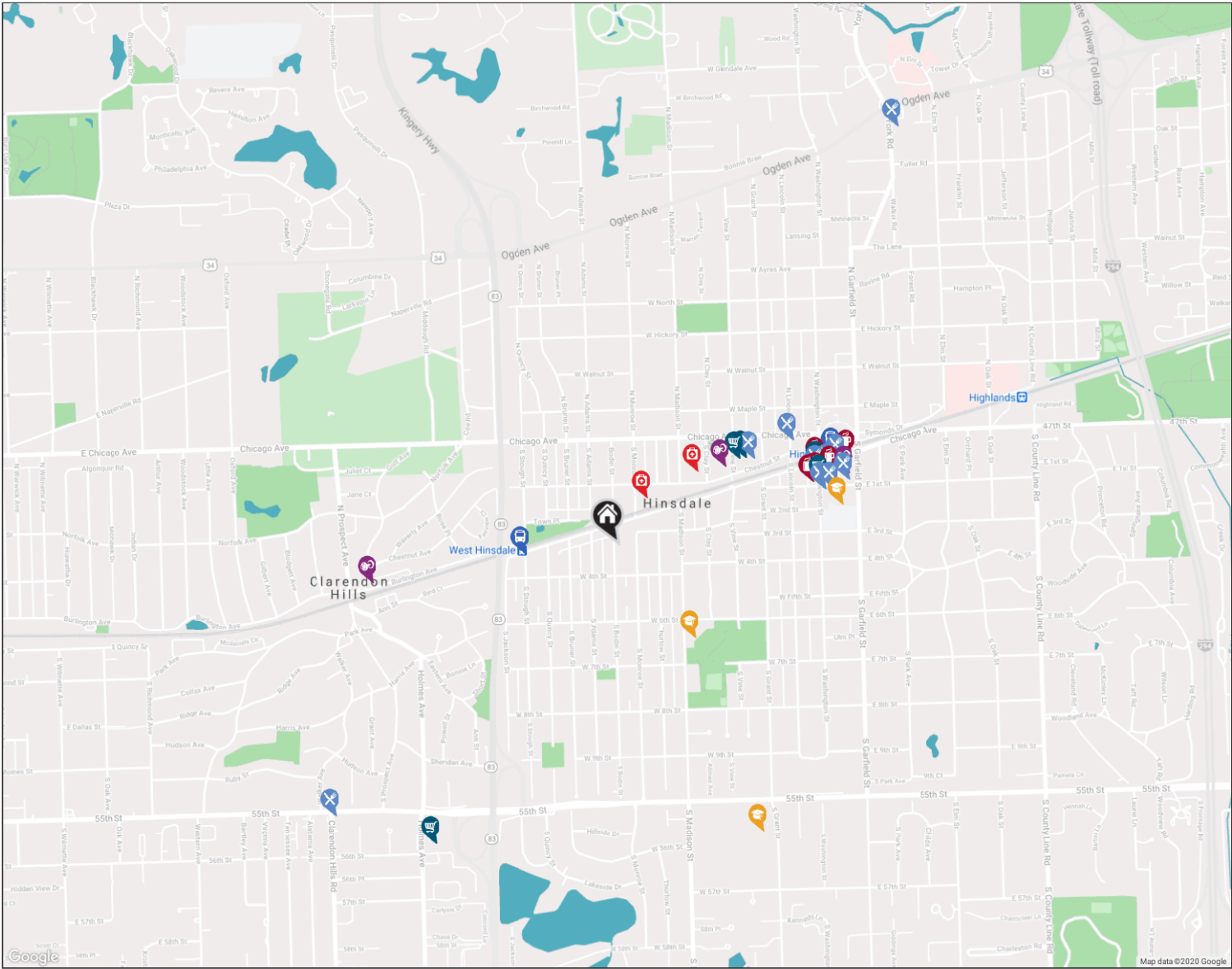
Students attend Community Consolidated School District 181 and the Hinsdale Township High School District 86, which includes Hinsdale South High School and Hinsdale Central High School, ranked one of the best high schools in the country.

Hinsdale has easy access to the Tri-State Tollway, Stevenson Expressway and three train stations along Metra’s BNSF Railway.

NEIGHBORHOOD GUIDE MAP

213 S BODIN STREET

26



NEIGHBORHOOD GUIDE



RESTAURANTS

- YiaYia's Cafe
13 GRANT SQUARE, 0.4 MI
- Il Poggiolo Ristorante
8 EAST 1ST STREET, 0.6 MI
- Nabuki
18 EAST 1ST STREET, 0.6 MI
- Fontano's Subs
9 SOUTH LINCOLN STREET, 0.6 MI
- Giuliano's Pizza
40 VILLAGE PLACE, 0.6 MI
- Jade Dragon Restaurant
43 SOUTH WASHINGTON STREET, 0.6 MI
- Fuller House
35 EAST 1ST STREET, 0.7 MI
- Page's Restaurant
26 1/2 EAST HINSDALE AVENUE, 0.7 MI
- Country House
241 55TH STREET, 1.1 MI

- Egg Harbor Cafe
GATEWAY SQUARE, 1.4 MI



COFFEE SHOPS

- Starbucks
33 S. WASHINGTON BLVD, 0.6 MI
- Toni Patisserie & Cafe
51 SOUTH WASHINGTON STREET, 0.6 MI
- Einstein Bros. Bagels
54 SOUTH WASHINGTON STREET, 0.6 MI
- Cafe La Fortuna Hinsdale
46 VILLAGE PLACE, 0.6 MI
- Corner Bakery Cafe
42 EAST HINSDALE AVENUE, 0.7 MI



SHOPPING

- Walgreens
15 GRANT SQUARE, 0.4 MI
- Kramer Foods
16 GRANT SQUARE, 0.4 MI

- Stockholm Objects
39 SOUTH WASHINGTON STREET, 0.6 MI

- J.McLaughlin
53 SOUTH WASHINGTON STREET, 0.6 MI

- Jewel-Osco
303 HOLMES AVENUE, 1.0 MI



HEALTH CLUBS

- CorePower Yoga
34 SOUTH VINE STREET, 0.4 MI
- Hinsdale Fitness Club
35 EAST 1ST STREET, 0.7 MI
- barre3
158 BURLINGTON AVENUE, 0.7 MI



HOSPITALS

- Chestnut Medical Center
534 WEST CHESTNUT STREET, 0.2 MI
- DuPage Medical Group
40 SOUTH CLAY STREET, 0.3 MI



SCHOOLS

- Madison Elementary School
611 SOUTH MADISON ST, 0.3 MI
- Hinsdale Middle School
100 SOUTH GARFIELD ST, 0.6 MI
- Hinsdale Central High School
5500 SOUTH GRANT ST, 0.9 MI



TRANSIT

- West Hinsdale
METRA - BNSF RAILWAY, 0.3 MI
- Hinsdale
METRA - BNSF RAILWAY, 0.7 MI

NO REPRESENTATIONS ARE MADE REGARDING THE ACCURACY OF THE INFORMATION PROVIDED.
ALL DATA IS SUBJECT TO CHANGE AND SHOULD BE VERIFIED WITH LOCAL SOURCES.



@properties®

Leading REAL ESTATE
COMPANIES
OF THE WORLD®

LP
LUXURY
PORTFOLIO
INTERNATIONAL®

