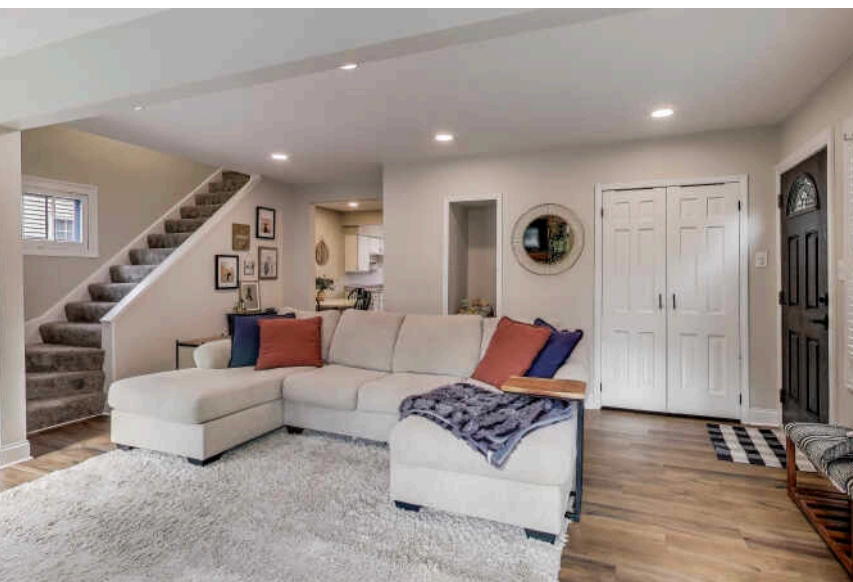


21465 W CRESCENT DRIVE  
MUNDELEIN





DISCOVER THIS RARELY AVAILABLE 2-BEDROOM, 1-BATH COTTAGE NESTLED IN SYLVAN LAKE – THE PERFECT BLEND OF CHARM, COMFORT, AND LOCATION. THIS DELIGHTFUL PROPERTY OFFERS A WALKOUT BASEMENT, IDEAL FOR EXTRA LIVING SPACE, A WORKSHOP, OR FUTURE DEVELOPMENT. ENJOY PEACEFUL MORNINGS AND STUNNING SUNSETS FROM YOUR DECK WITH A PARTIAL VIEW OF SYLVAN LAKE, SURROUNDED BY MATURE TREES AND A TRANQUIL SETTING. THE OPEN-CONCEPT MAIN FLOOR FEATURES COZY LIVING AND DINING AREAS WITH PLENTY OF NATURAL LIGHT, WHILE THE KITCHEN RETAINS ITS COTTAGE-STYLE WARMTH AND CHARACTER. LOCATED JUST STEPS FROM THE LAKE, PARKS, AND LOCAL AMENITIES, THIS PROPERTY IS PERFECT AS A YEAR-ROUND RESIDENCE, WEEKEND RETREAT, OR INVESTMENT OPPORTUNITY. OPPORTUNITIES LIKE THIS DON'T COME UP OFTEN – MAKE YOUR SYLVAN LAKE DREAM A REALITY TODAY!







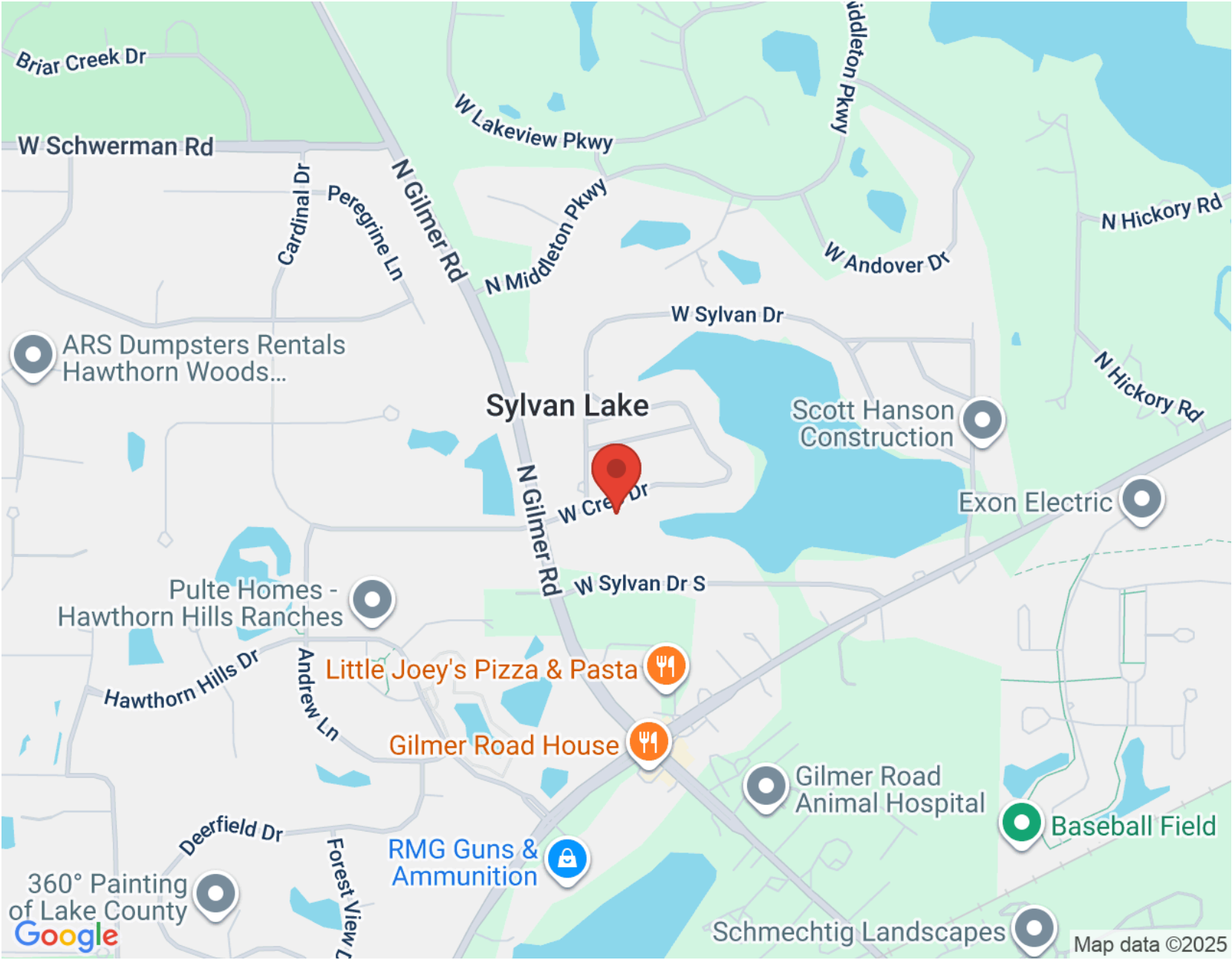
LOCATED IN THE HEART OF LAKE COUNTY,  
**MUNDELEIN** IS A THRIVING COMMUNITY  
THAT CONTINUES TO GROW DUE TO ITS  
ABUNDANT RECREATIONAL  
OPPORTUNITIES, FRIENDLY COMMUNITY,  
AND CONVENIENT TRANSPORTATION  
OPTIONS.

Mundelein celebrates its history with a popular annual festival that includes musical performances, a parade, carnival, car show, fireworks, and more. The village also has a craft beer festival, farmers market, and an art festival.

Once a popular resort area for city dwellers looking to escape the heat, Diamond Lake remains one of the village's gems. The recreation area, one of 33 in the community, stretches over 100 acres with a pristine lake, sandy beaches, and shaded picnic areas as well as a floating sports park, paddle boat, and kayak rentals.

In addition to the beach, residents can enjoy a golf course, bike trails, community theater, and museum. The village's downtown area has been redeveloped and there are various commercial areas.

Residential areas include a diverse mix of housing styles including new construction and mixed-use developments.



NOTES \_\_\_\_\_

\_\_\_\_\_

\_\_\_\_\_

\_\_\_\_\_

\_\_\_\_\_

\_\_\_\_\_

\_\_\_\_\_

\_\_\_\_\_

\_\_\_\_\_

\_\_\_\_\_

\_\_\_\_\_



## ISABEL GALAN

1 8475294673

847-367-0500

ISABELGALAN@ATPROPERTIES.COM



CHRISTIE'S  
INTERNATIONAL REAL ESTATE