

214 FREEPORT DRIVE
BLOOMINGDALE





ROOM DIMENSIONS

LIVING ROOM : 15' × 14'
FAMILY ROOM : 18' × 15'
DINING ROOM : 12' × 12'
KITCHEN : 12' × 10'
MASTER BEDROOM : 14' × 12'
SECOND BEDROOM : 14' × 10'
THIRD BEDROOM : 10' × 10'
FOURTH BEDROOM : 12' × 12'

4 BEDROOM

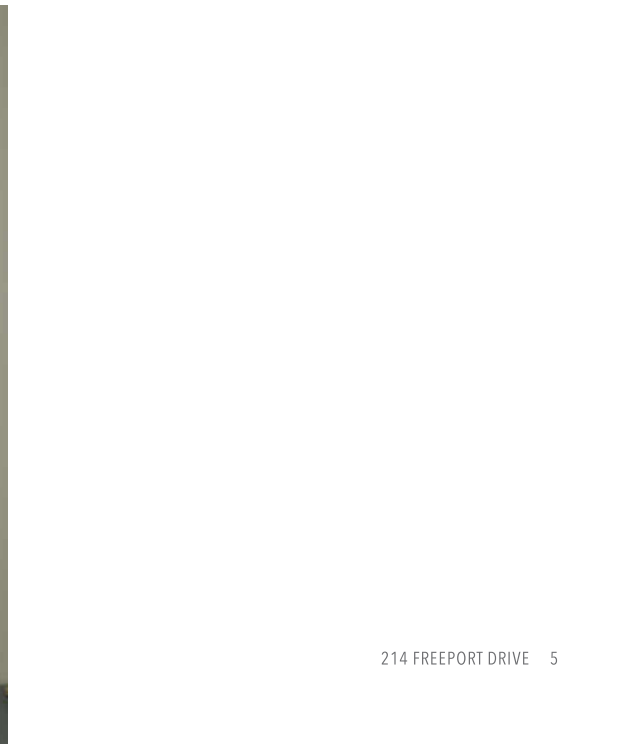
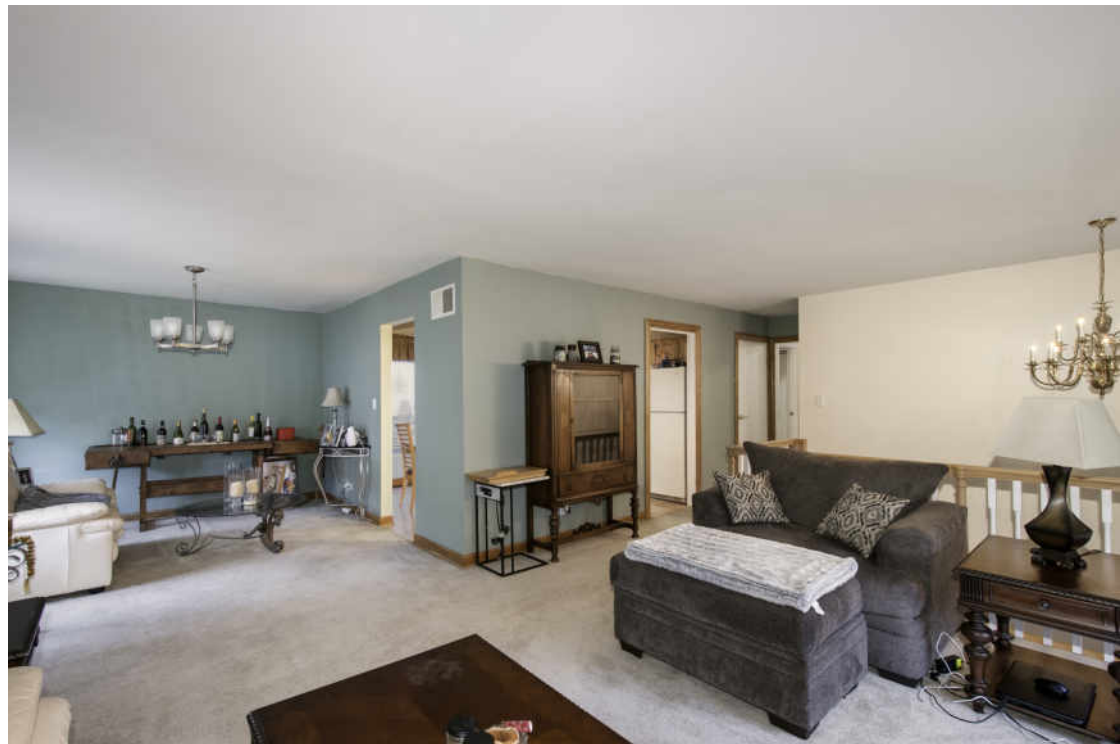
2 BATH

TAXES: \$6,740

SPACIOUS RAISED RANCH IN BLOOMINGDALE

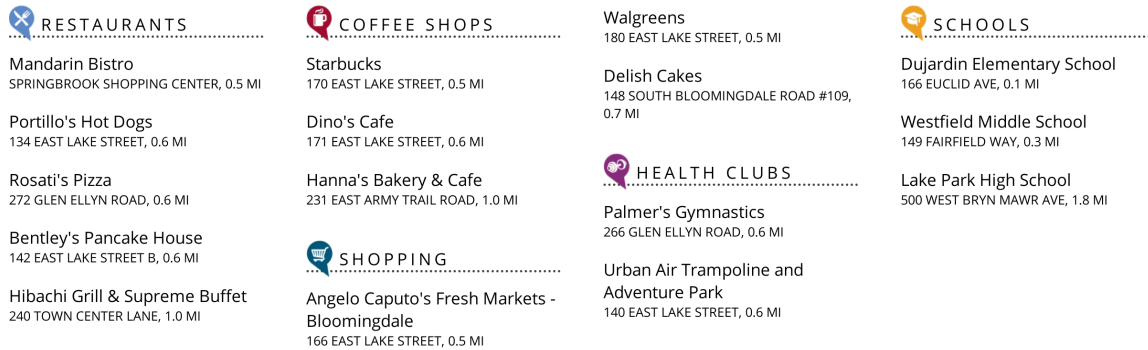
A concrete drive ushers you to this meticulously maintained, spacious 4 bedroom raised ranch that's accompanied by a 2 car attached garage.

- ample windows bathe the living spaces in natural light highlighting the plush carpet and soft paint which adorn this gathering space and the adjacent dining room.
- The eat-in kitchen provides a casual spot to enjoy a meal, here or just beyond the sliders on the raised wooden deck.
- An abundance of light wood cabinets offer excellent storage, while recessed lighting illuminates the space for the chef.
- Comfy carpeting underfoot, neutral paint, and a cooling ceiling fan overhead accent the master bedroom which has a view of the peaceful back yard.
- The secondary sleeping quarters are also generously sized and well-appointed for family and guests.
- Rounding out the interior is a sizable recreation room on the lower level, a laundry room, and thoughtfully update bathrooms.
- The backyard is completed by a concrete patio off the recreation room, under the raised wooden deck.







[illegible]



GREG TEETS

GREG TEETS SUPER TEAM

630-703-2084

GREGTEETS@ATPROPERTIES.COM



GREG TEETS
SUPER TEAM

@properties®

214FREEPORTDR.INFO