

215 RUSH STREET

ROSELLE





SLOKA PHOTOGRAPHY

ROOM DIMENSIONS

LIVING ROOM : 14' × 15'

DINING ROOM : 12' × 10'

KITCHEN : 12' × 10'

PRIMARY BEDROOM : 12' × 16'

SECOND BEDROOM : 10' × 11'

THIRD BEDROOM : 11' × 13'

FOURTH BEDROOM : 9' × 10'

FIFTH BEDROOM : 10' × 10'

RECREATION ROOM : 12' × 18'

OFFICE : 12' × 14'

5 BEDROOM

4 BATH

TAXES: \$7,772

215 RUSH STREET, ROSELLE

Welcome to this stunning, rehabbed home with loads of high-end updates! This 5-bedroom, 4-bathroom beauty located in the center of Roselle offers the perfect blend of modern design and everyday functionality. Situated on a large fenced in lot, the property features a spacious 2.5-car heated detached garage with two EV power outlets and a fully finished basement-ideal for multi-generational living, guests, or entertainment. Step inside to find an open-concept main level with designer finishes, recessed lighting, hardwood flooring, and an abundance of natural light. The gourmet kitchen is the heart of the home, boasting quartz countertops, custom cabinetry, modern light fixtures, stainless steel appliances, and a large center island. The main level offers not only a spacious dining room but also the 4 bedroom with full bathroom, Perfect for guest or in laws. The second level boasts a large Master bedroom with full Bathroom along with generously sized second and third bedrooms with dormer windows and and another full bathroom. Retreat to the Basement for a full second living space that includes the 5th bedroom, full bathroom, and a massive recreation room perfect for movie nights, play areas, or a home gym, not to mention another room for an office. Everything is NEW: electrical, plumbing, HVAC, roof, windows, siding, drywall, insulation, 4 new bathrooms, Updated Kitchen, new 16ft wide 75ft asphalt driveway, no expense spared! The private fenced in backyard with separate barn offers plenty of room to entertain, garden, or relax in your own sanctuary. A rare turnkey opportunity don't miss your chance to own this like-new home with all the space and luxury upgrades you've been searching for in the heart of Roselle. Walking distance to the Metra station and a new state of art library will be built next year down the street. This is a must see!



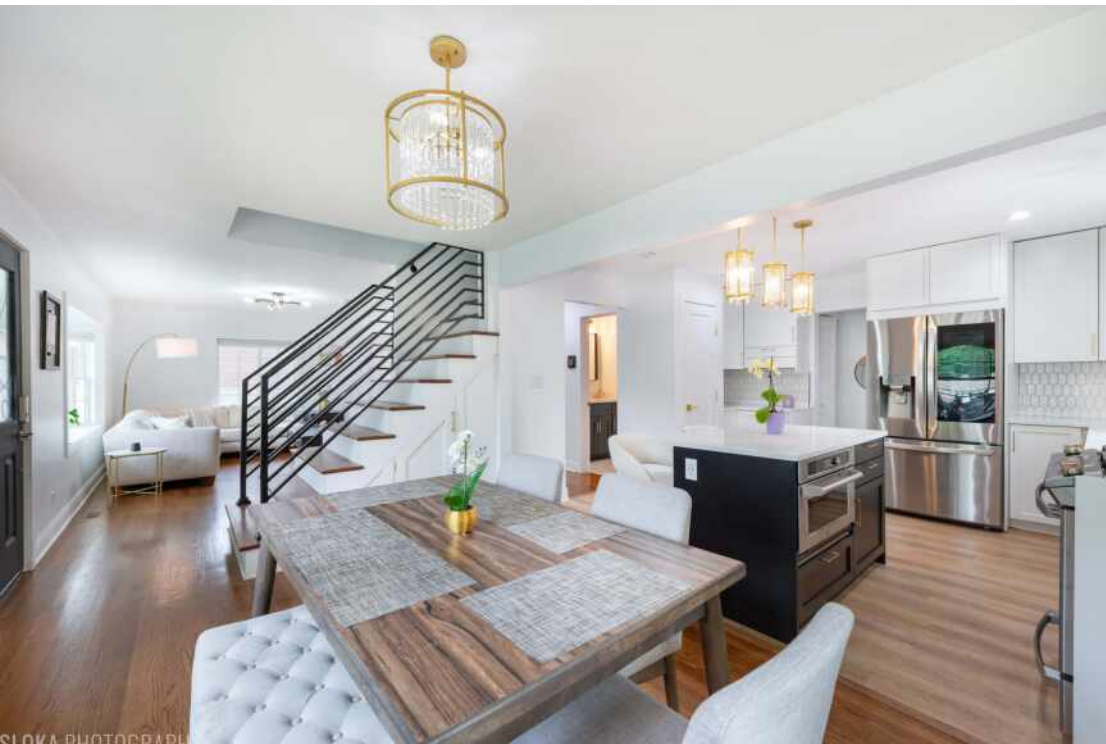
SLOKA PHOTOGRAPHY



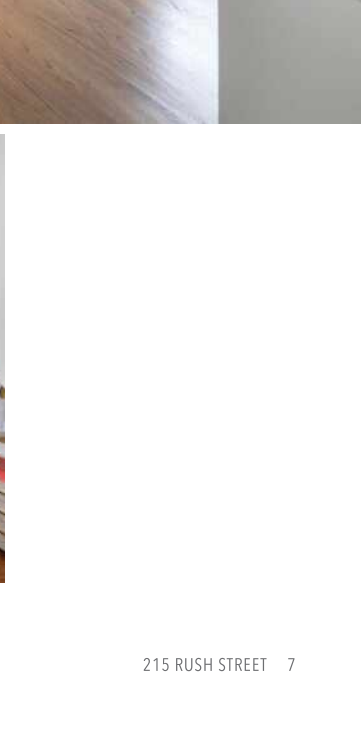
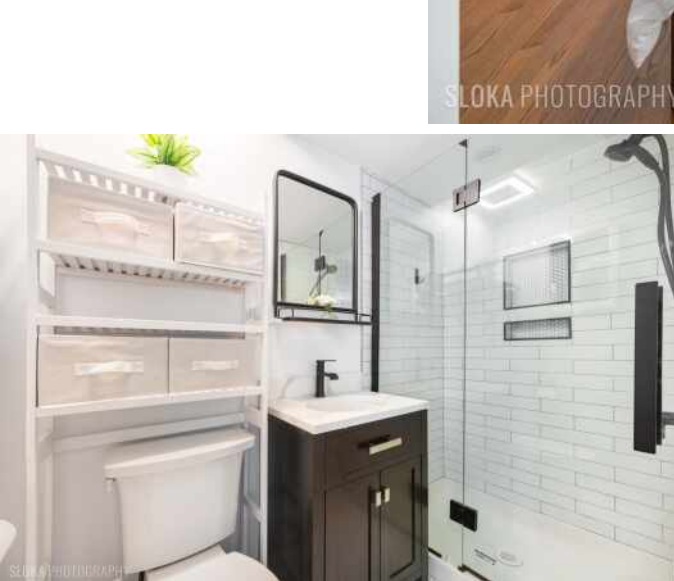
SLOKA PHOTOGRAPHY



SLOKA PHOTOGRAPHY



SLOKA PHOTOGRAPHY





SLOKA PHOTOGRAPHY



SLOKA PHOTOGRAPHY



SLOKA PHOTOGRAPHY



SLOKA PHOTOGRAPHY



SLOKA PHOTOGRAPHY



SLOKA PHOTOGRAPHY



SLOKA PHOTOGRAPHY



SLOKA PHOTOGRAPHY



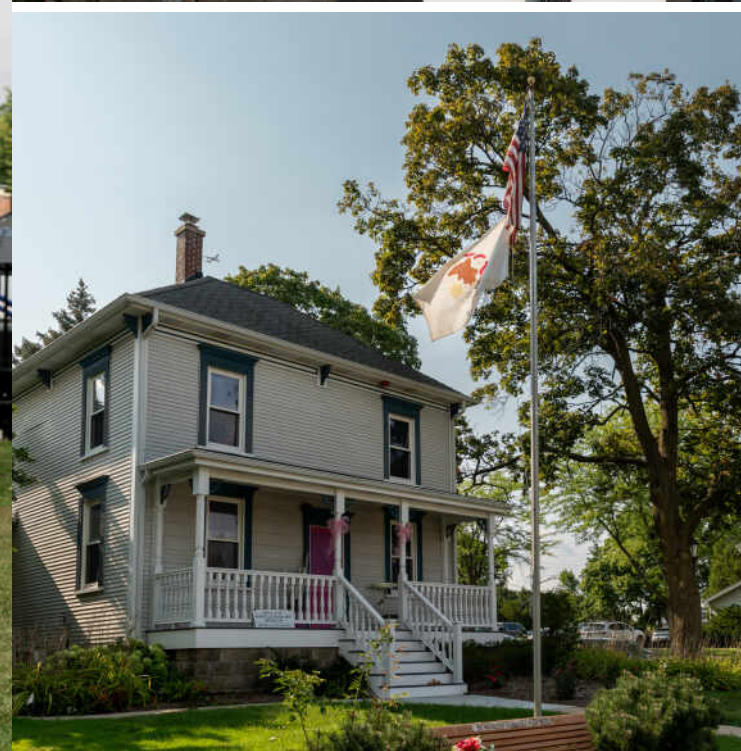
SLOKA PHOTOGRAPHY



SLOKA PHOTOGRAPHY



SLOKA PHOTOGRAPHY



THE VILLAGE OF **ROSELLE** OFFERS ITS RESIDENTS A WARM SENSE OF SMALL-TOWN COMMUNITY, PAIRED WITH THE CONVENIENCES OF A NEARBY MAJOR METROPOLITAN AREA.

In addition to its own flourishing downtown, the suburb is just 30 miles northwest of Chicago.

Quaint and walkable, Roselle's Town Center has a selection of unique family-owned shops, restaurants, and a microbrewery. It is also the location for several community events that residents and visitors enjoy throughout the year. These include the Rose Festival, Independence Day Celebration, Taste of Roselle, Summer Concert Series, and Roselle Winterfest. Additionally, the village is home to Lynfred Winery. Established in 1979 by two locals, the winery now boasts 50 varietals, a state-of-the-art wine making facility with a tasting room, and bed & breakfast.

For those seeking outdoor adventure, the village offers several parks and recreational facilities, as well as miles of hiking trails and biking paths that wind through the Busse Woods, Meacham Grove Forest Preserve, Mallard Lake Forest Preserve, Illinois Prairie Path, and Fox River Trail.

An established historical footprint, along with state-recognized public schools, and extensive community programs contribute to Roselle's reputation as a sought-after Chicago suburb. The village is easily accessible via Metra rail service that runs throughout the day to Chicago's Union Station and has immediate access to Interstate 390. Whether new construction, existing single-family homes, condominiums, or townhomes, Roselle provides many desirable housing options for those looking to call the village home.



DAN DRAKE

847.347.3484

DANDRAKE@ATPROPERTIES.COM

DAN DRAKE
RESIDENTIAL