

21787 W VERNON RIDGE DRIVE  
MUNDELEIN







#### ROOM DIMENSIONS

LIVING ROOM : 14' × 14'

FAMILY ROOM : 28' × 19'

DINING ROOM : 14' × 14'

KITCHEN : 16' × 15'

OFFICE / 5TH BEDROOM : 16' × 14'

PRIMARY BEDROOM : 30' × 16'

SECOND BEDROOM : 15' × 14'

THIRD BEDROOM : 14' × 13'

FOURTH BEDROOM : 14' × 13'

GREAT ROOM : 45' × 31'

LAUNDRY ROOM : 19' × 6'

**4 BEDROOM**

**4.1 BATH**

**TAXES: \$18,387**

**ASSESSMENTS: \$190 / MONTH**

## TIMELESS LUXURY IN IVANHOE ESTATES

Welcome to luxury living inside the prestigious gated community of Ivanhoe Estates, where every day feels like a retreat. Set along the 2nd fairway of the Prairie Course, this executive-style home offers over 4,200 square feet of refined living space with 4 bedrooms, 4.1 baths, 2 fireplaces, and a finished English basement.

A dramatic two-story foyer sets the tone, leading to gracious living and dining rooms with plantation shutters and crown molding. The sun-filled two-story family room features floor-to-ceiling windows with sweeping golf course views and a stately brick fireplace. A private office nearby provides a quiet work-from-home space with inspiring fairway vistas.

The updated kitchen blends style and function with granite countertops, painted cabinetry, a stylish backsplash, and high-end KitchenAid appliances. An island with seating, pantry, built-in desk, and adjoining casual dining area with deck access make everyday living effortless.

Upstairs, the primary suite offers generous space for a sitting area, plus a bath with dual vanities, Jacuzzi tub, separate shower, and large walk-in closet. Three additional bedrooms complete the level—one with an en-suite bath and two sharing a hall bath.

The finished English basement adds more than 2,200 square feet of flexible living space, including a large great room with fireplace, built-in serving area, wine cellar, full bath, and abundant storage.

Outside, lush landscaping, a serene waterfall and koi pond, and expansive views of the fairway create a private outdoor escape. Multiple spaces—a large deck, brick patio with fire pit, and a natural stone seating area—offer endless options for entertaining or relaxing. This exceptional home blends elegance, comfort, and an unparalleled setting in the heart of Ivanhoe Estates.

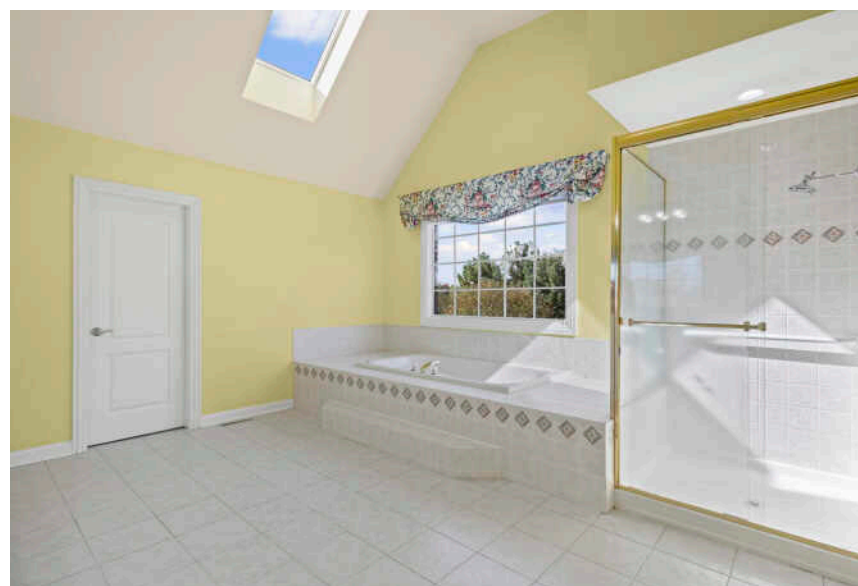
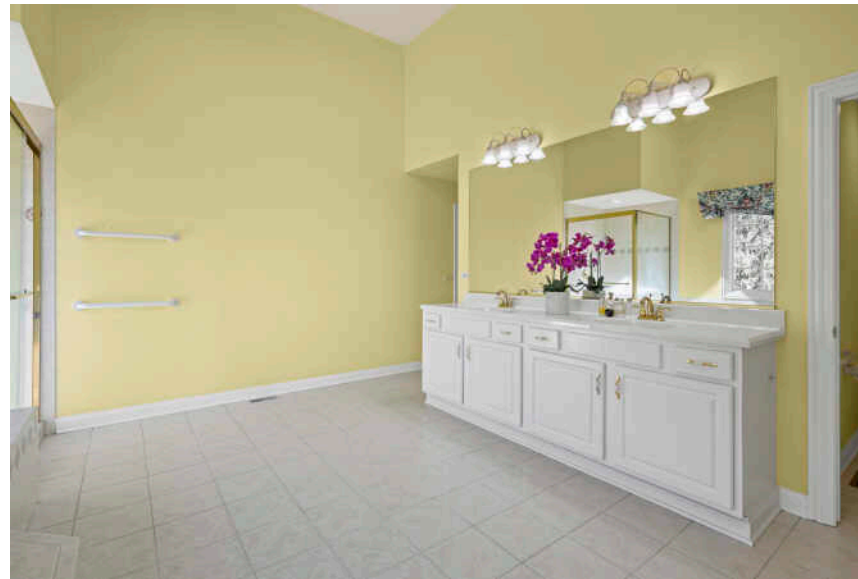




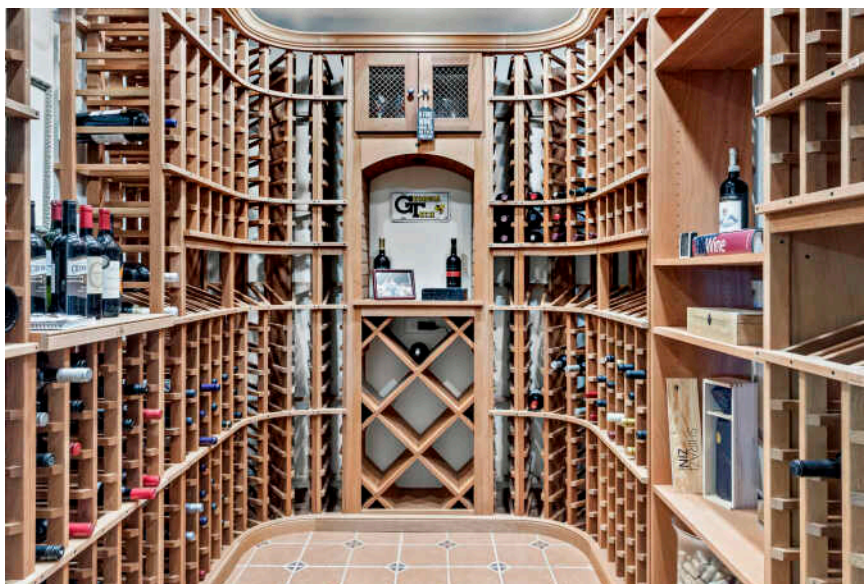




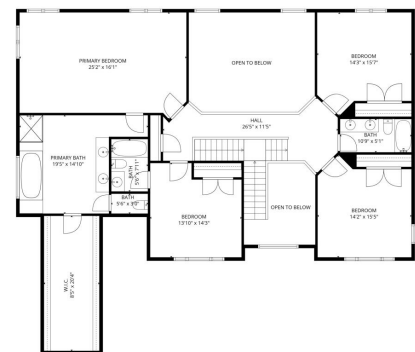




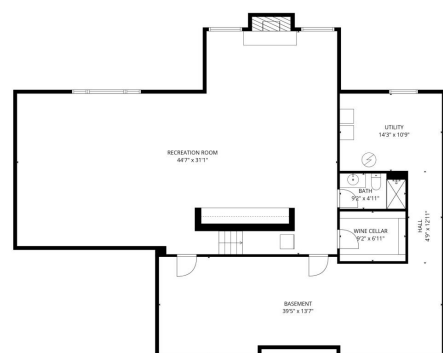




TOTAL: 5187 sq. ft.  
BELOW GRADE: 1206 sq. ft. FLOOR 2: 2075 sq. ft. FLOOR 3: 1826 sq. ft.  
EXCLUDED AREAS: WINE CELLAR: 69 sq. ft. BASEMENT: 509 sq. ft. UTILITY: 154 sq. ft.  
HALL: 61 sq. ft. PREPACE: 29 sq. ft. GARAGE: 605 sq. ft.  
DECK: 429 sq. ft. OPEN TO BELOW: 383 sq. ft. WALLS: 357 sq. ft.



TOTAL: 5187 sq. ft.  
BELOW GRADE: 1206 sq. ft. FLOOR 2: 2075 sq. ft. FLOOR 3: 1826 sq. ft.  
EXCLUDED AREAS: WINE CELLAR: 69 sq. ft. BASEMENT: 509 sq. ft. UTILITY: 154 sq. ft.  
HALL: 61 sq. ft. PREPACE: 29 sq. ft. GARAGE: 605 sq. ft.  
DECK: 429 sq. ft. OPEN TO BELOW: 383 sq. ft. WALLS: 357 sq. ft.



TOTAL: 5187 sq. ft.  
BELOW GRADE: 1206 sq. ft. FLOOR 2: 2075 sq. ft. FLOOR 3: 1826 sq. ft.  
EXCLUDED AREAS: WINE CELLAR: 69 sq. ft. BASEMENT: 509 sq. ft. UTILITY: 154 sq. ft.  
HALL: 61 sq. ft. PREPACE: 29 sq. ft. GARAGE: 605 sq. ft.  
DECK: 429 sq. ft. OPEN TO BELOW: 383 sq. ft. WALLS: 357 sq. ft.





LOCATED IN THE HEART OF LAKE COUNTY,  
**MUNDELEIN** IS A THRIVING COMMUNITY  
THAT CONTINUES TO GROW DUE TO ITS  
ABUNDANT RECREATIONAL  
OPPORTUNITIES, FRIENDLY COMMUNITY,  
AND CONVENIENT TRANSPORTATION  
OPTIONS.

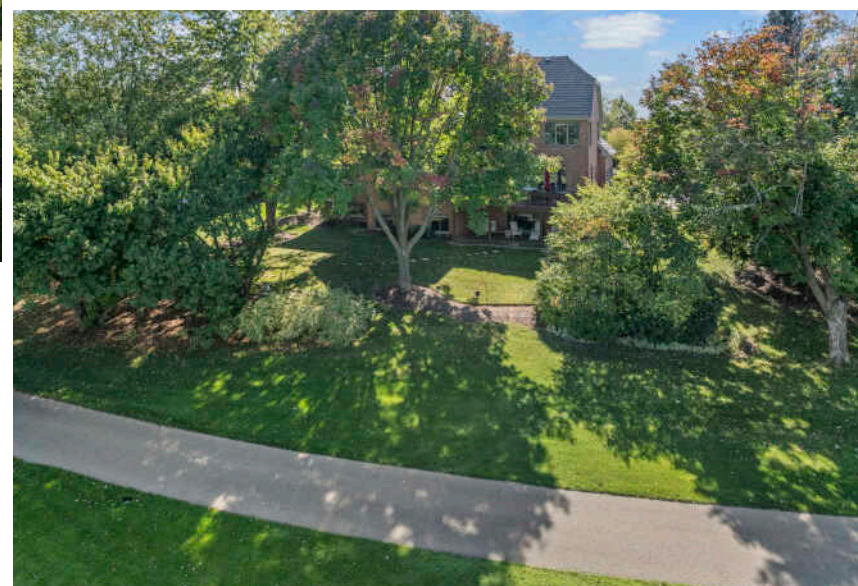
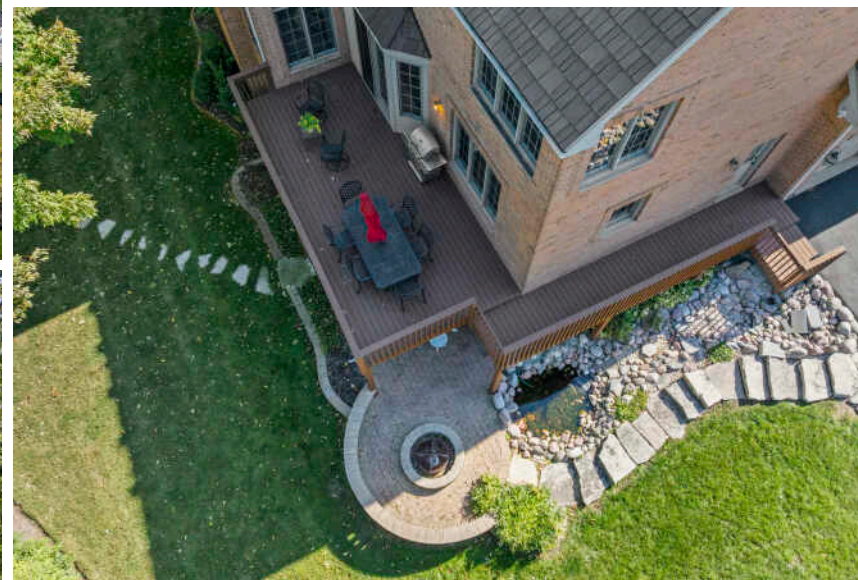
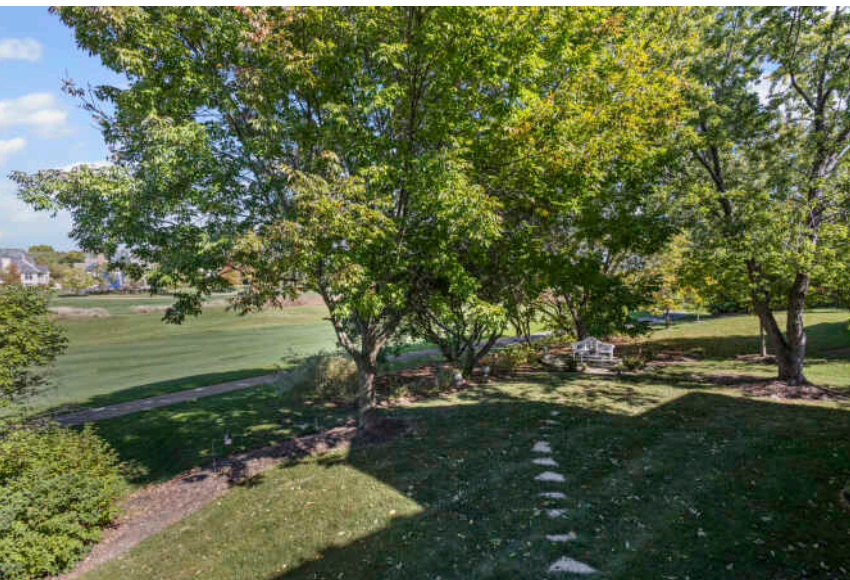
Mundelein celebrates its history with a popular annual festival that includes musical performances, a parade, carnival, car show, fireworks, and more. The village also has a craft beer festival, farmers market, and an art festival.

Once a popular resort area for city dwellers looking to escape the heat, Diamond Lake remains one of the village's gems. The recreation area, one of 33 in the community, stretches over 100 acres with a pristine lake, sandy beaches, and shaded picnic areas as well as a floating sports park, paddle boat, and kayak rentals.

In addition to the beach, residents can enjoy a golf course, bike trails, community theater, and museum. The village's downtown area has been redeveloped and there are various commercial areas.

Residential areas include a diverse mix of housing styles including new construction and mixed-use developments.





NOTES \_\_\_\_\_

---

---

---





## CYNTHIA LENIHAN

847.736.1722

847-367-0500

CYNTHIALENIHAN@ATPROPERTIES.COM



All specifications, features, designs, price, assessments, taxes and materials are subject to change without notice. Depicted floor plans and architectural renderings are only an artist's impression.

