

21854 W MURFIELD COURT
MUNDELEIN



KRIS GEHL PHOTO



@properties®

CHRISTIE'S
INTERNATIONAL REAL ESTATE



ROOM DIMENSIONS

OFFICE/DEN : 15.7' × 11.1'

DINING ROOM : 17.8' × 14.5'

LIVING ROOM : 24.4' × 19.11'

KITCHEN : 19.9' × 7.9'

BREAKFAST ROOM : 21.1' × 11.1'

PRIMARY BEDROOM : 17.5' × 15.7'

BEDROOM 2 : 20.4' × 11.3'

BEDROOM 3 : 19.7' × 11.8'

LOFT AREA : 22.3' × 18.9'

4 BEDROOM

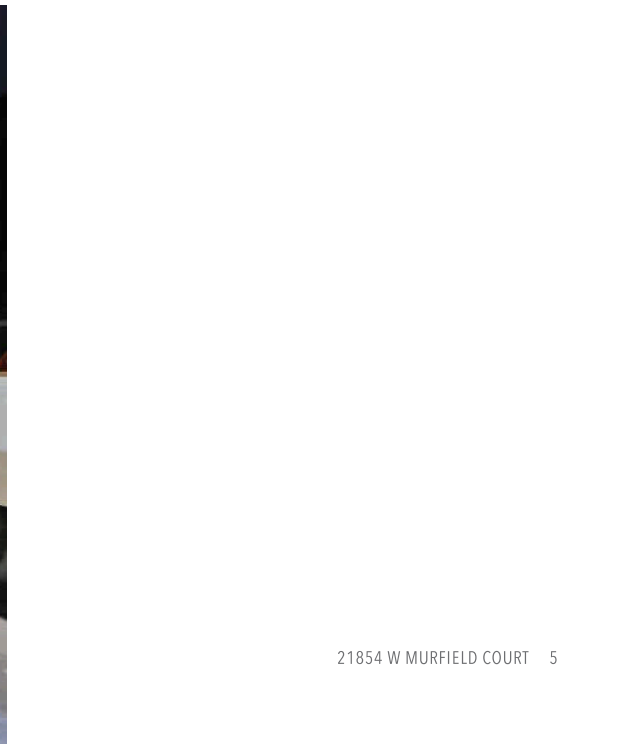
4.1 BATH

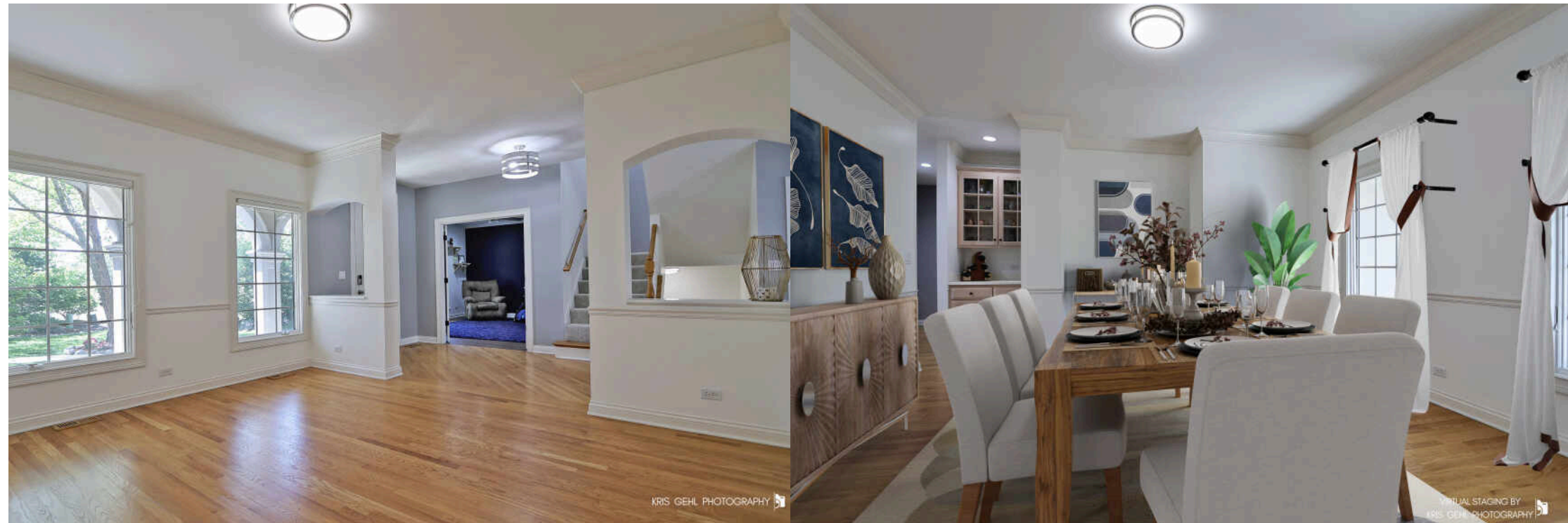
WELCOME HOME

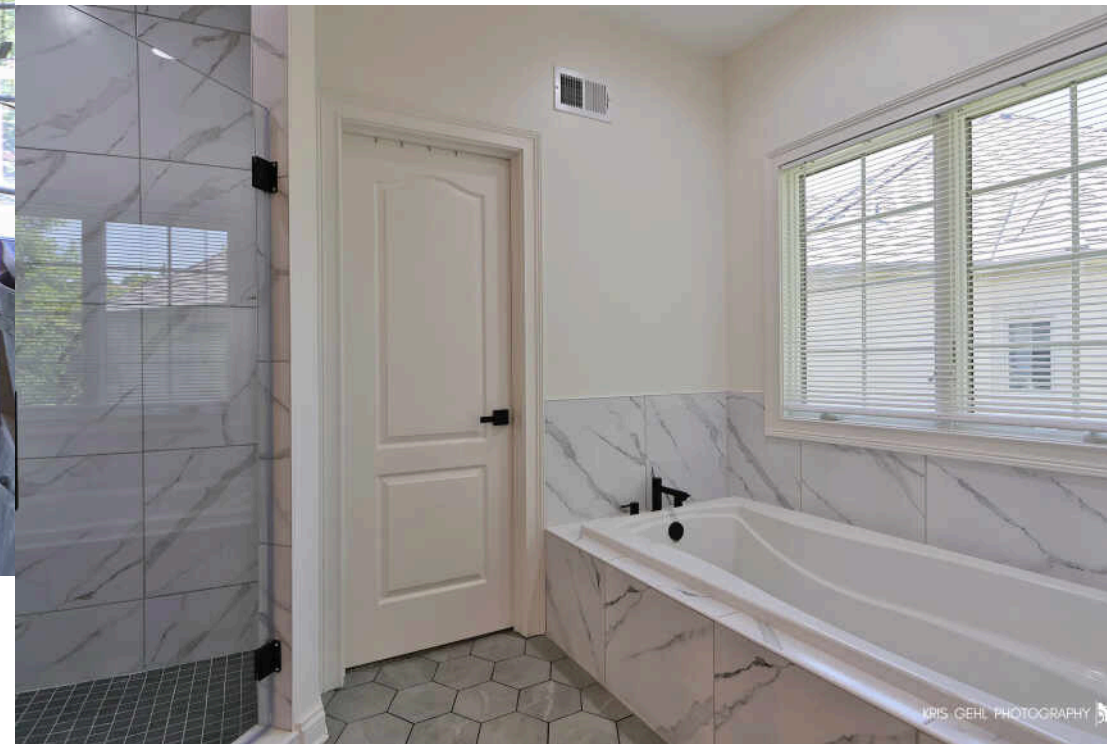
Nestled within the gated community of the Woods of Ivanhoe on a quiet cul-de-sac, this spacious home offers over 3,300 square feet above grade plus a finished basement that adds even more flexible living space for everyday life and entertaining. Total square footage over 4800 sq ft.

A welcoming front entrance, mature landscaping, and new front walkway and driveway set a strong first impression and reflect the steady care and improvements made over time. Inside, vaulted ceilings, hardwood floors, new carpet, and tons of natural light from large windows enhance the open main living area, creating a bright and comfortable flow throughout. The kitchen connects easily to the main living spaces, making it ideal for gathering, and overlooks the updated backyard. Outdoor improvements-including a newer TREX deck, patio, retaining wall, and drainage system-extend the living space outdoors and provide a functional setting for relaxing or entertaining. The home features two fireplaces, one anchoring the main living area and a second in the finished basement, adding warmth and character on both levels. The main-floor primary suite offers convenience and privacy with a newly remodeled spa-like bath completed in 2026. Upstairs, two additional bedrooms and a loft provide flexible space for guests, work, or hobbies. The finished basement expands the home even further with a second kitchen area, 4th bedroom, 2 full baths, upgraded flooring system, and its own fireplace, creating an ideal space for entertaining, extended stays, or multi-use living.

Located in the sought-after Woods of Ivanhoe, this home offers generous space, a functional layout, and a thoughtful collection of updates in a well-established neighborhood setting.

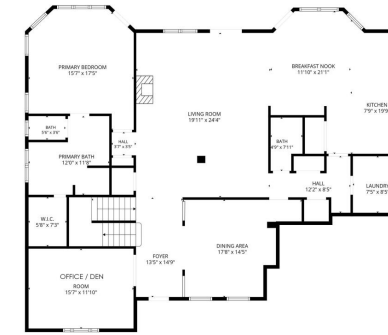








KRIS GEHL PHOTOGRAPHY



FIRST FLOOR

TOTAL: 4839 sq. ft.
 BASEMENT: 1598 sq. ft., 1ST FLOOR: 2088 sq. ft., 2ND FLOOR: 1155 sq. ft.
 EXCLUDED AREAS: LOW CEILING: 41 sq. ft., OPEN TO BELOW: 330 sq. ft., WALLS: 314 sq. ft.

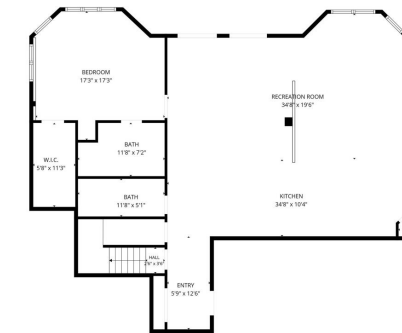
KRIS GEHL PHOTOGRAPHY



2ND FLOOR

TOTAL: 4839 sq. ft.
 BASEMENT: 1598 sq. ft., 1ST FLOOR: 2088 sq. ft., 2ND FLOOR: 1155 sq. ft.
 EXCLUDED AREAS: LOW CEILING: 41 sq. ft., OPEN TO BELOW: 330 sq. ft., WALLS: 314 sq. ft.

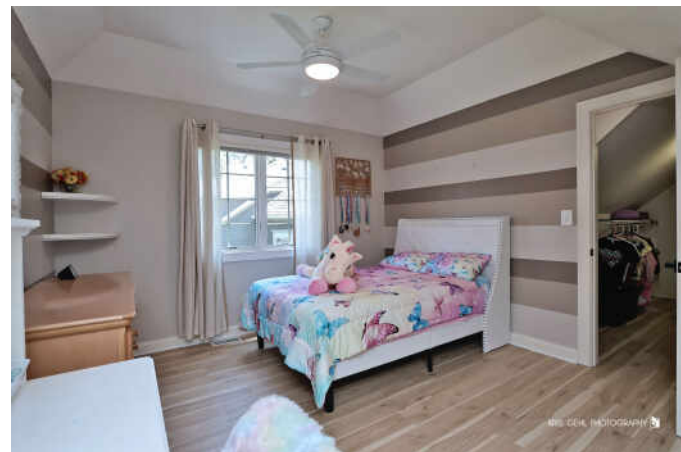
KRIS GEHL PHOTOGRAPHY



BASEMENT

TOTAL: 4839 sq. ft.
 BASEMENT: 1598 sq. ft., 1ST FLOOR: 2088 sq. ft., 2ND FLOOR: 1155 sq. ft.
 EXCLUDED AREAS: LOW CEILING: 41 sq. ft., OPEN TO BELOW: 330 sq. ft., WALLS: 314 sq. ft.

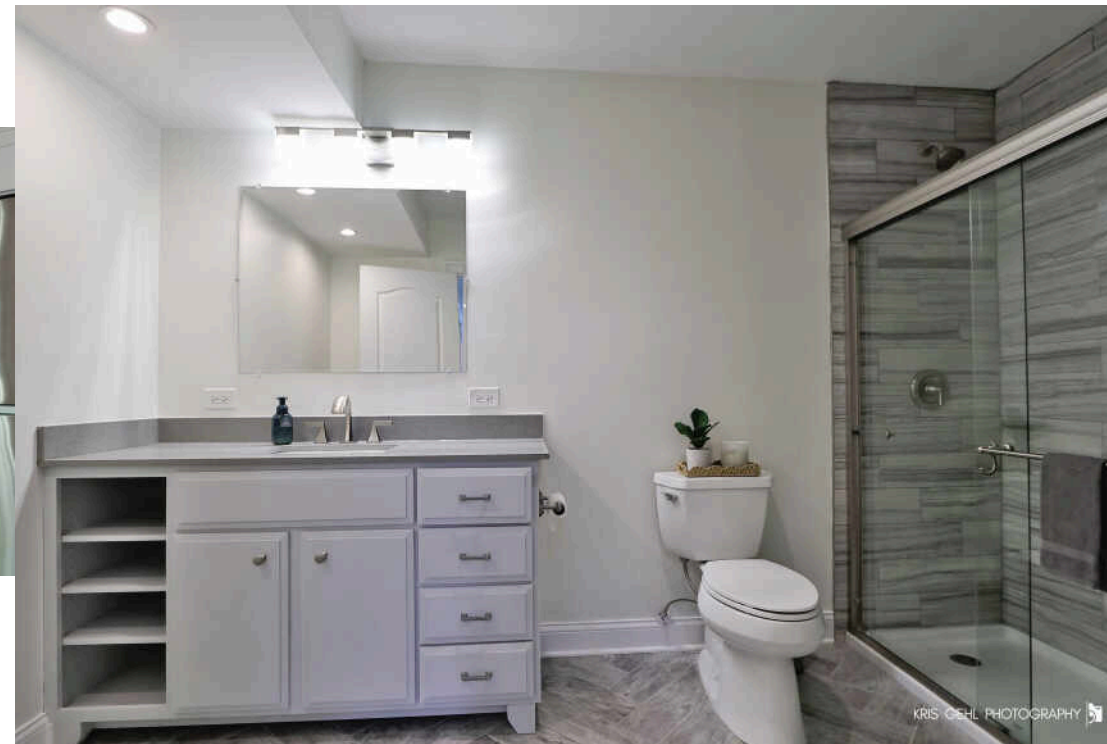
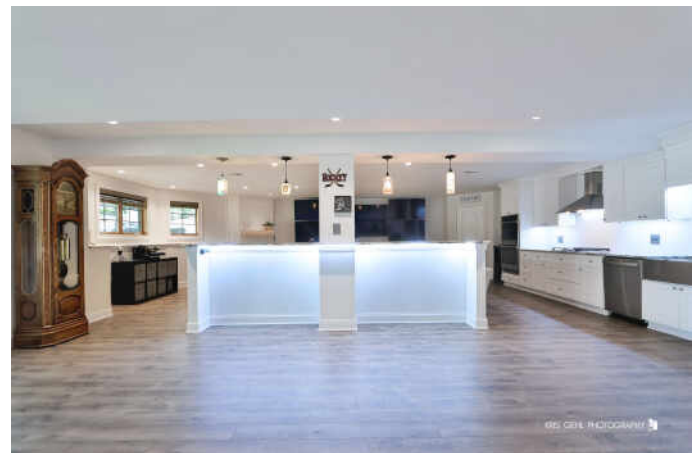
KRIS GEHL PHOTOGRAPHY



KRIS GEHL PHOTOGRAPHY



KRIS GEHL PHOTOGRAPHY





KRIS GEHL PHOTOGRAPHY



KRIS GEHL PHOTOGRAPHY



KRIS GEHL PHOTOGRAPHY



KRIS GEHL PHOTOGRAPHY



KRIS GEHL PHOTOGRAPHY



KRIS GEHL PHOTOGRAPHY



CYNTHIA LENIHAN

847.736.1722

847-367-0500

CYNTHIALENIHAN@ATPROPERTIES.COM