

218 LIONEL DRIVE
GRAYSLAKE





ROOM DIMENSIONS

KITCHEN : 15' × 11'

FAMILY ROOM : 23' × 13'

DINING AREA : 14' × 11'

RECREATION ROOM : 15' × 10'

PRIMARY BEDROOM : 16' × 18'

2ND BEDROOM : 11' × 13'

3RD BEDROOM : 12' × 10'

3 BEDROOM

2.1 BATH

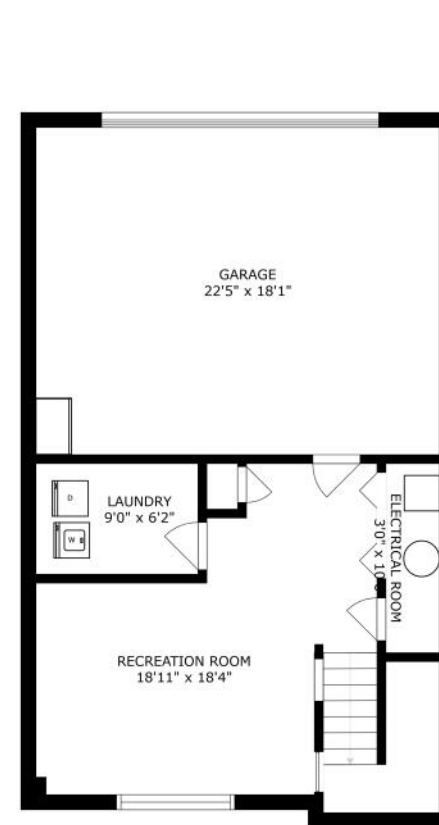
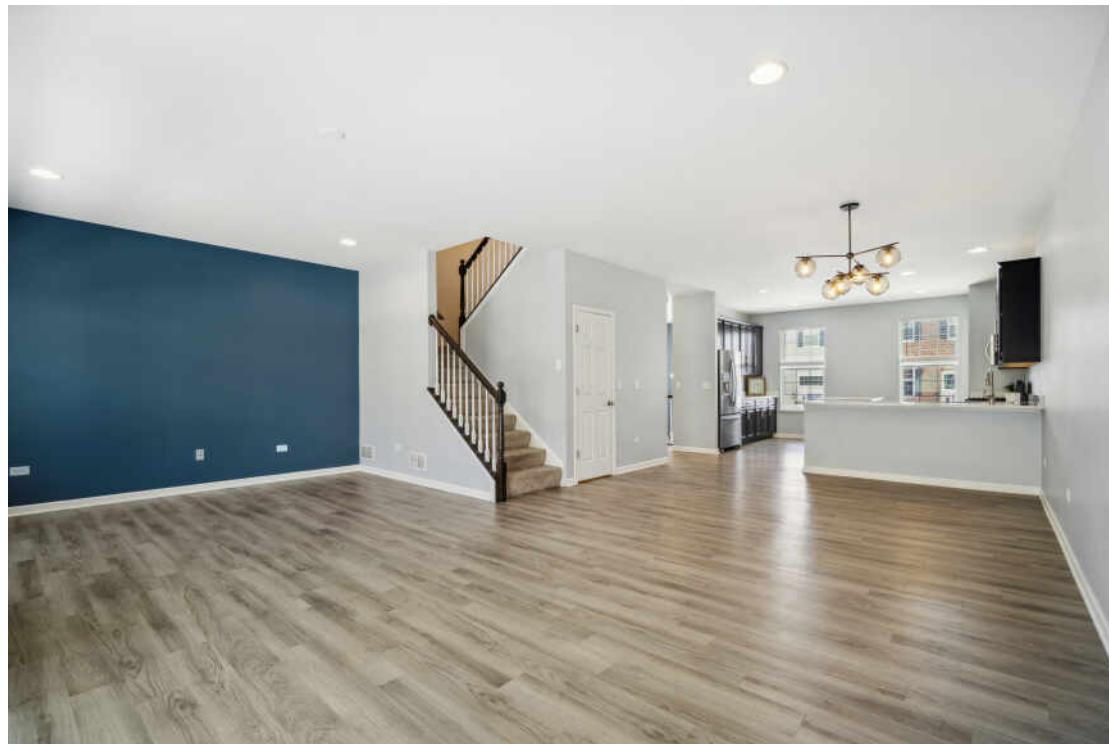
TAXES: \$10,503.20

ASSESSMENTS: \$239

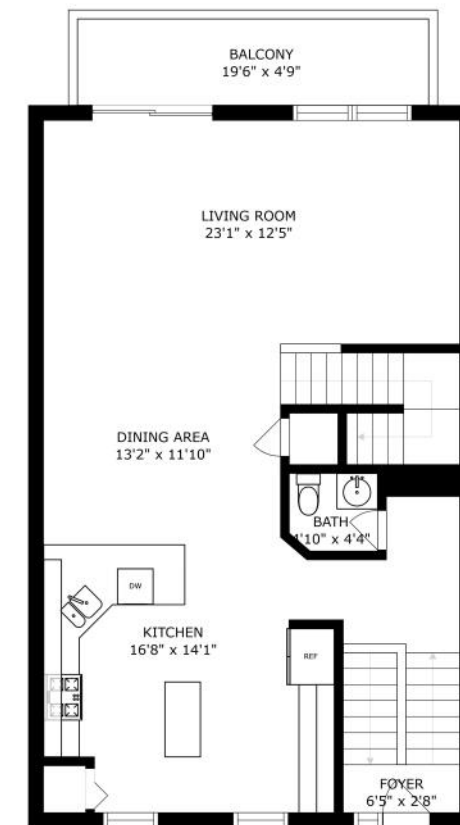
LOVE WHERE YOU LIVE

Discover modern living at its finest in this chic 3-bedroom brick townhome perfectly placed in the sought after Lake Street Square! With its sleek design and sophisticated finishes, this property filled with an abundance of natural light is the epitome of urban sophistication. The open-concept living, dining, and kitchen area with 9' ceilings are perfect for entertaining! The spacious kitchen boasts sleek stainless-steel appliances, ample counter space with a large island, and a convenient breakfast bar. Enjoy your morning cup of coffee, or grilling for your guests on the deck off of the family room. Retreat to your large primary bedroom with a large walk-in closet and relax in the spa-like en-suite after a long day. The lower-level is completely finished offering another room for entertaining adjacent to the 2-car attached garage. Only minutes away from historic Grayslake award winning schools, boutique shops, delicious dining, and Metra. Schedule your showing today!

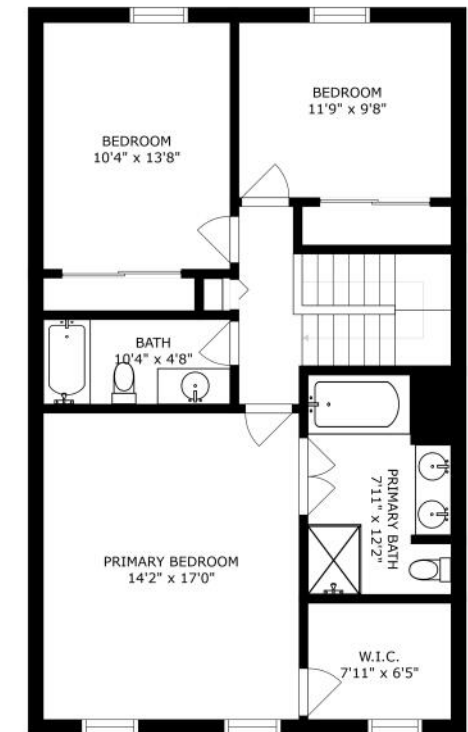




FLOOR 1



FLOOR 2



FLOOR 3

SIZES AND DIMENSIONS ARE APPROXIMATE, ACTUAL MAY VARY.



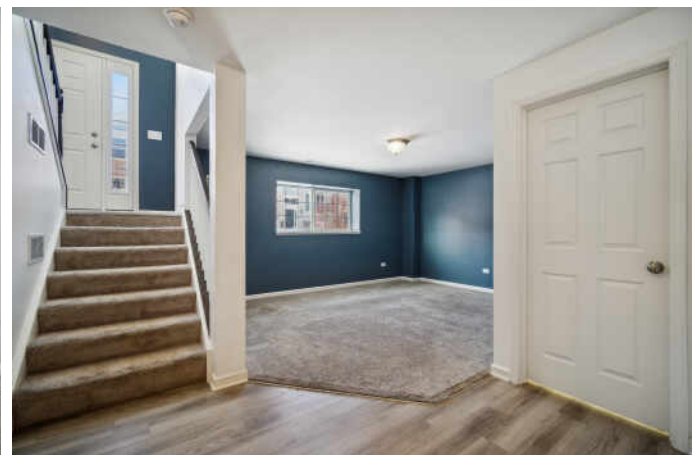
HOME TO A RECREATIONAL LAKE AND A VARIETY OF COMMUNITY EVENTS, **GRAYSLAKE** IS A VIBRANT VILLAGE IN CENTRAL LAKE COUNTY.

The lake remains at the center of the community and is a year-round attraction with fishing, swimming, and boating in the summer and ice fishing, hockey, and skating in the winter.

Grayslake retains its rural ambience with a historic downtown district and hometown celebrations such as a pet parade. There are also public golf courses, tennis courts, and recreational areas with swimming pools, skate parks, and ball fields. A 1,200-acre county forest preserve on the north side of town has a bird observation deck, trails, and wetlands.

The Grayslake Art Festival, Taste of Grayslake, and Grayslake Summer Days are popular attractions along with the Lake County Fair. Residents and visitors enjoy music, arts and crafts, carnival games, and local food vendors.

Grayslake has two train stations along Metra’s Milwaukee District North and North Central Service lines in addition to Pace bus routes throughout the village.



NOTES

[illegible]



RYAN HARRIS

847.708.0386

847-367-0500

RYANHARRIS@ATPROPERTIES.COM



CHRISTIE'S
INTERNATIONAL REAL ESTATE

218LIONELDRIVE.INFO

All specifications, features, designs, price, assessments, taxes and materials are subject to change without notice. Depicted floor plans and architectural renderings are only an artist's impression.

