



2195 RIVERSIDE POINTE DRIVE ST. JOSEPH

2195RIVERSIDEPOINTE.INFO

2195 RIVERSIDE POINTE DRIVE • ST. JOSEPH



MARK WORTMAN ASSOCIATE BROKER

269.876.2929 mobile
markwortman@atproperties.com
www.WortmanGroup.com



DOUG WORTMAN ASSOCIATE BROKER

269.930.2250 mobile
dougwortman@atproperties.com
www.WortmanGroup.com

2195 RIVERSIDE POINTE DRIVE • ST. JOSEPH
2195RIVERSIDEPOINTE.INFO





WELCOME HOME!

2195 RIVERSIDE POINTE DRIVE BEAUTIFUL WATERFRONT CONTEMPORARY

FEATURES

Beautiful St. Joseph River waterfront contemporary designed for today's lifestyle. Captivating home with amazing river views from most rooms with 113' of frontage on a double lot. Home is light and bright with soaring ceilings, open floor plan, multiple living areas, 2 fireplace, and lots of windows throughout.

Ideal Eagle Pointe location offers easy access to Lake Michigan via boat and a short drive to downtown St. Joseph/area beaches. Updated kitchen flows into the living/dining area, perfect for entertaining. Offering 4 bedrooms (two ensuites), 4.1 baths, over 4500 SF living space above grade, butler's kitchen, and 3 car garage. Exterior living is enhanced with spacious decks with perfect river views.



MARK WORTMAN ASSOCIATE BROKER

269.876.2929 mobile
markwortman@atproperties.com
www.WortmanGroup.com



DOUG WORTMAN ASSOCIATE BROKER

269.930.2250 mobile
dougwortman@atproperties.com
www.WortmanGroup.com



DECK







FOYER



KITCHEN



KITCHEN



KITCHEN



DINING ROOM



DINING ROOM



FAMILY ROOM



FAMILY ROOM



SUNROOM



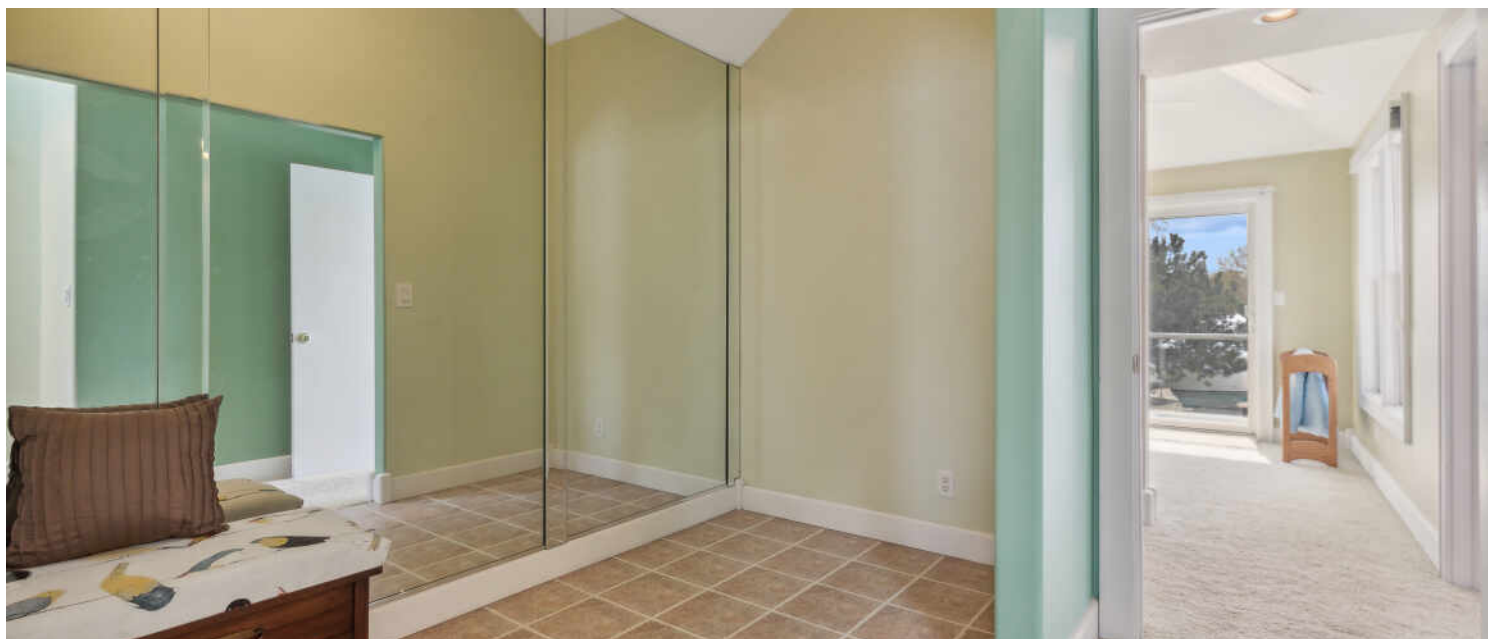
PRIMARY BEDROOM



PRIMARY BEDROOM SITTING AREA



PRIMARY BATHROOM



EXERCISE ROOM



2ND BEDROOM



BATHROOM



3RD BEDROOM



4TH BEDROOM



5TH BEDROOM



2ND BATHROOM



LAUNDRY ROOM



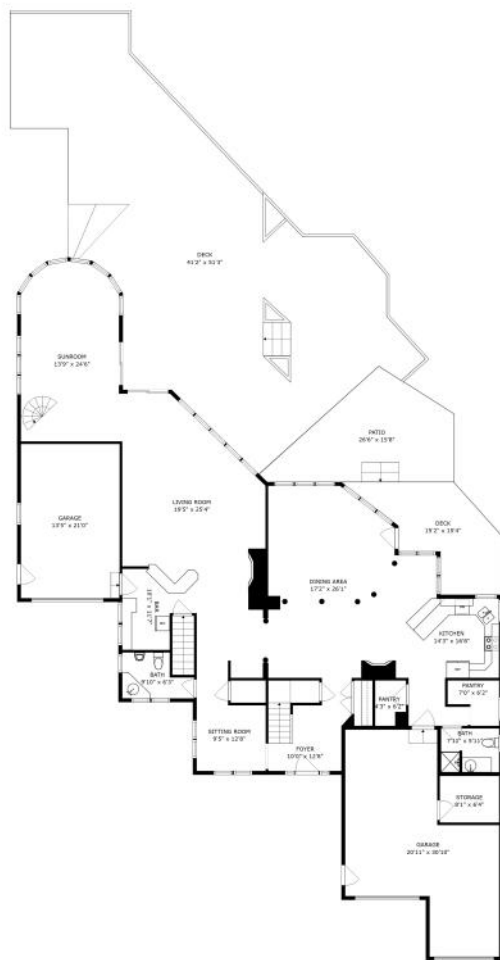


DECK

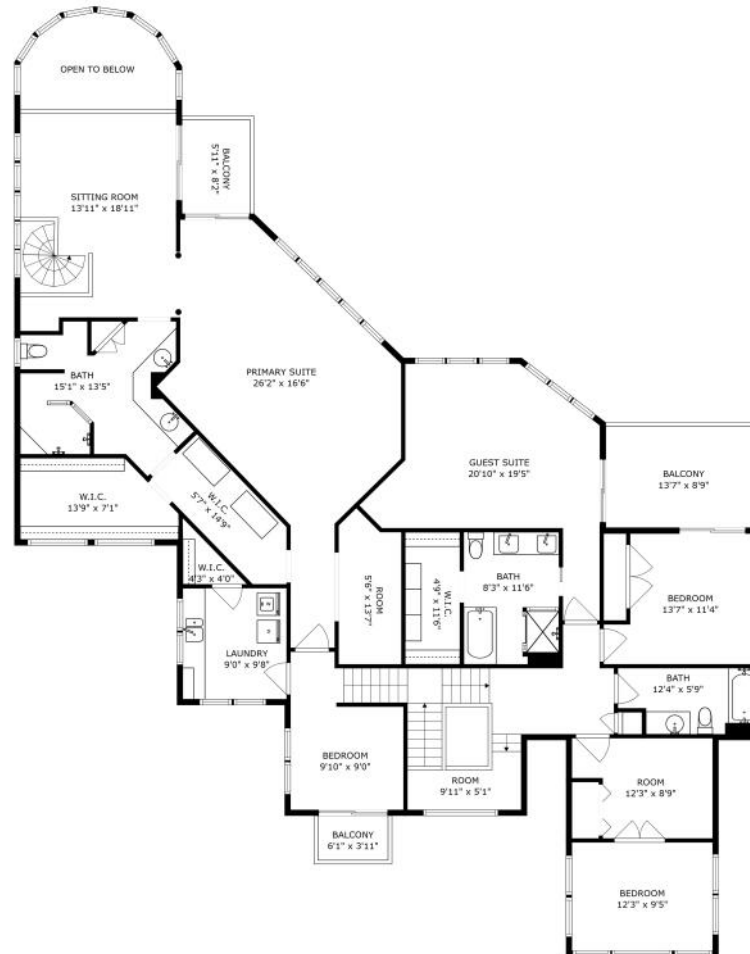


DECK

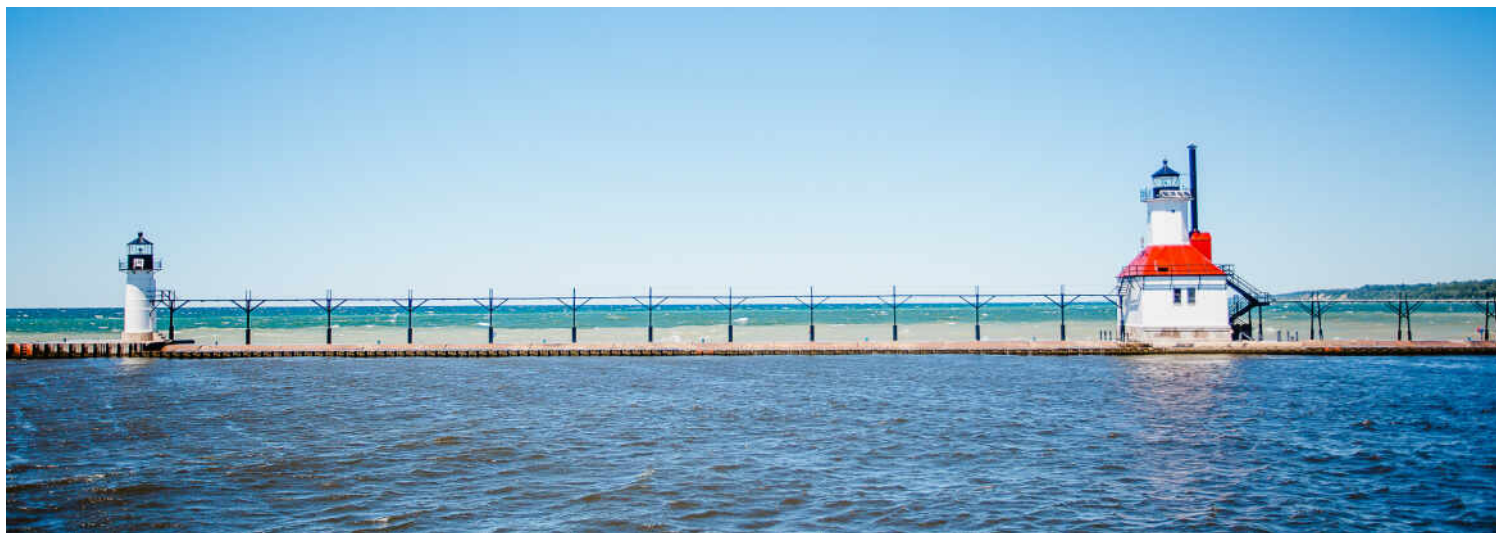




SIZES AND DIMENSIONS ARE APPROXIMATE; ACTUAL MAY VARY.



SIZES AND DIMENSIONS ARE APPROXIMATE, ACTUAL MAY VARY.



KNOWN AS “THE RIVIERA OF THE MIDWEST,” **ST. JOSEPH** IS A RESORT COMMUNITY SURROUNDED BY PICTURESQUE BEACHES, WITH LAKE MICHIGAN AS ITS SPARKLING BACKDROP.

Locals love everything this lakefront community has to offer, from postcard-worthy views to a collection of independent restaurants and boutique shops. Seasonal festivals and events provide even more entertainment for residents of St. Joseph and surrounding communities.

The city was founded as a shipping community and has since evolved into an affluent resort community.

St. Joseph’s lakeshore is lined with idyllic beaches and picturesque sand dune formations. Inland is a lush countryside that produces some of the country’s best orchards and vineyards. Downtown St. Joseph is comprised of local shops and eclectic dining options.

Outdoor enthusiasts have limitless options. The Margaret B. Upton Arboretum showcases many sculptures and park benches and is adjacent to downtown. Locals and visitors can also enjoy the many parks, such as Lake Bluff Park, Tiscornia Park, and Silver Beach County Park, and recreational facilities that offer fishing, boating, and swimming.

St. Joseph hosts various festivals that attract thousands of visitors, including the annual Chalk the Block Arts Festival and live music at the Shadowland Pavilion at Silver Beach.

Housing in St. Joseph includes homes overlooking the bluff and plenty of opportunities to own property with Lake Michigan frontage, ranging from beach cottages to custom-built mansions.

St. Joseph has easy access to I-94, offering convenient travel to both Chicago and Detroit.

