



21 S BRUNER STREET | HINSDALE MONROE ELEMENTARY GEM

21 S BRUNER STREET | HINSDALE • MONROE ELEMENTARY GEM



@properties | CHRISTIE'S
INTERNATIONAL REAL ESTATE

LP LUXURY
PORTFOLIO
INTERNATIONAL



LARYSA DOMINO REAL ESTATE BROKER, MBA, CPA

630.561.8331 mobile
larysadorino@atproperties.com

LD LARYSA DOMINO
GROUP

21 S BRUNER STREET | HINSDALE • MONROE ELEMENTARY GEM





21 S BRUNER STREET | HINSDALE | PRIME IN-TOWN HINSDALE LOCATION

ROOM DIMENSIONS

Foyer	19'x7'
Office	11'x11'
Dining Room	14'x12'
Kitchen	20'x16'
Family Room	15'x14'
Master Bedroom	18'x15'
Second Bedroom	17'x12'
Third Bedroom	12'x10'
Laundry Room	6'x6'
Fourth Bedroom	25'x11'
Recreation Room	29'x24'
Bar	14'x6'

FEATURES

Prime in-town Hinsdale location on a quiet street! Built in 2014, this stylish home offers a modern open floor plan and many recent updates. From the picture-perfect curb appeal and inviting front porch to the thoughtfully designed interiors, every detail impresses. The gorgeous white kitchen features quartz countertops, upgraded appliances, and a large island with seating and views of the beautifully landscaped yard. It opens to a spacious family room with a cozy fireplace and easy yard access. The dining room shines with coffered ceilings, while the renovated front office boasts on-trend finishes and custom built-ins. Upstairs, each bedroom is en-suite. The stunning primary suite offers a walk-in closet and luxurious bathroom. Two additional bedrooms with private baths and a convenient laundry room complete the second floor. The expansive third level includes another bedroom, full bath, and flexible loft-style living area. The finished basement features a large recreation room built-in bar, fireplace, and full bath. Throughout the home, you'll find hardwood floors, exquisite millwork, and newer mechanicals. The backyard is a true retreat with professional landscaping, spacious brick patio, and a two-car detached garage. Located in the Blue Ribbon-award winning Monroe Elementary school district, with Clarendon Hills Middle School, and nationally acclaimed Hinsdale Central High School. Walk to town, train, and schools. This is the one you've been waiting for!



LARYSA DOMINO REAL ESTATE BROKER, MBA, CPA
630.561.8331 mobile larysadowino@atproperties.com

















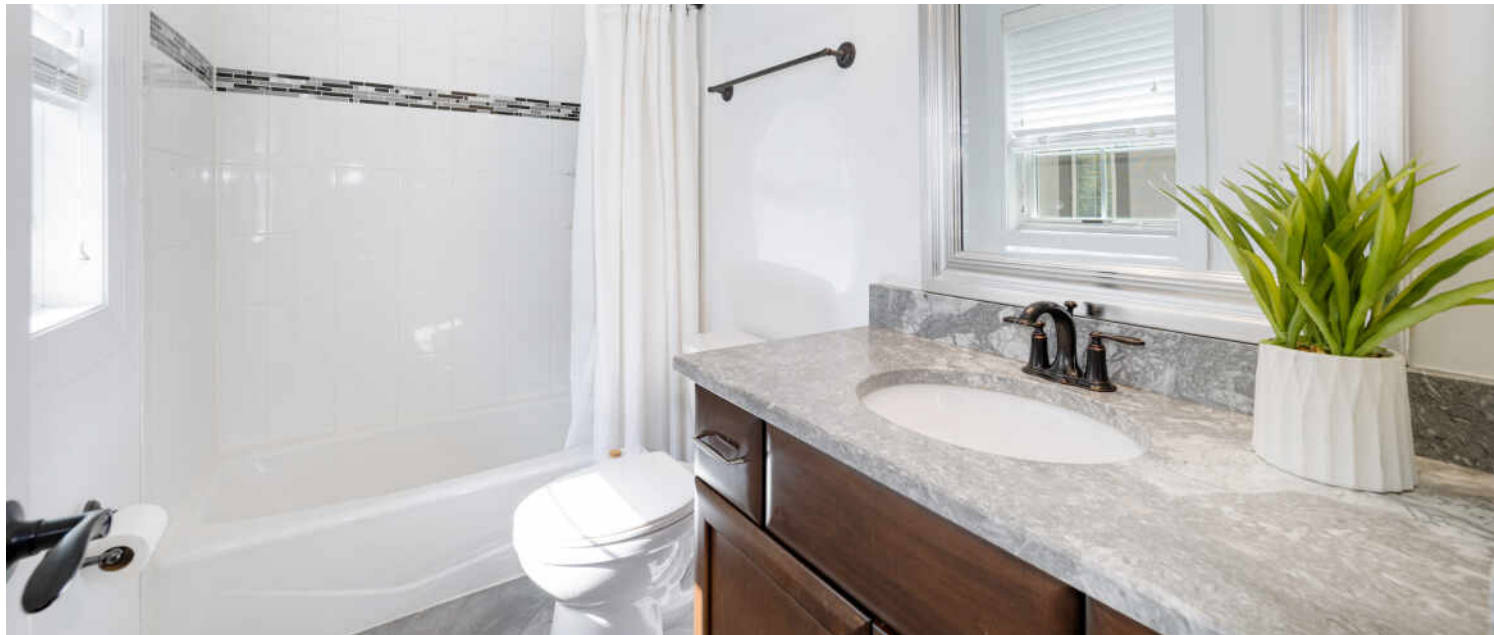






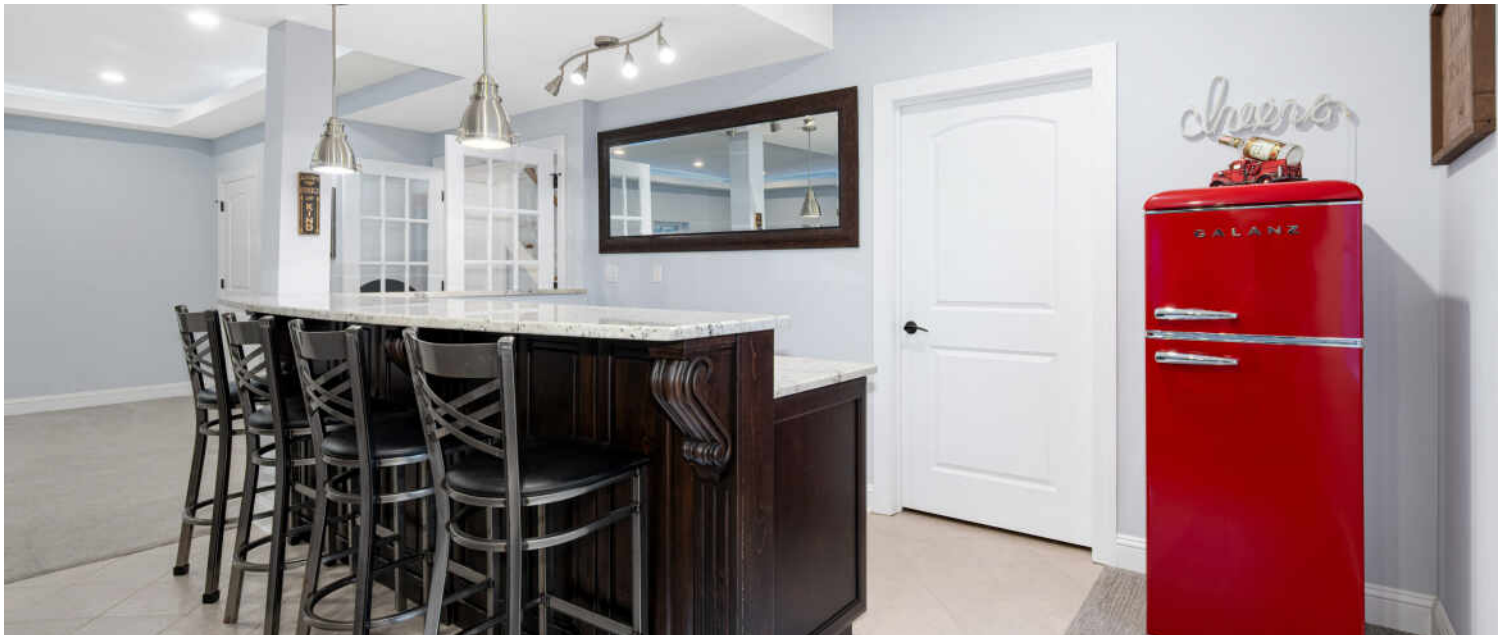


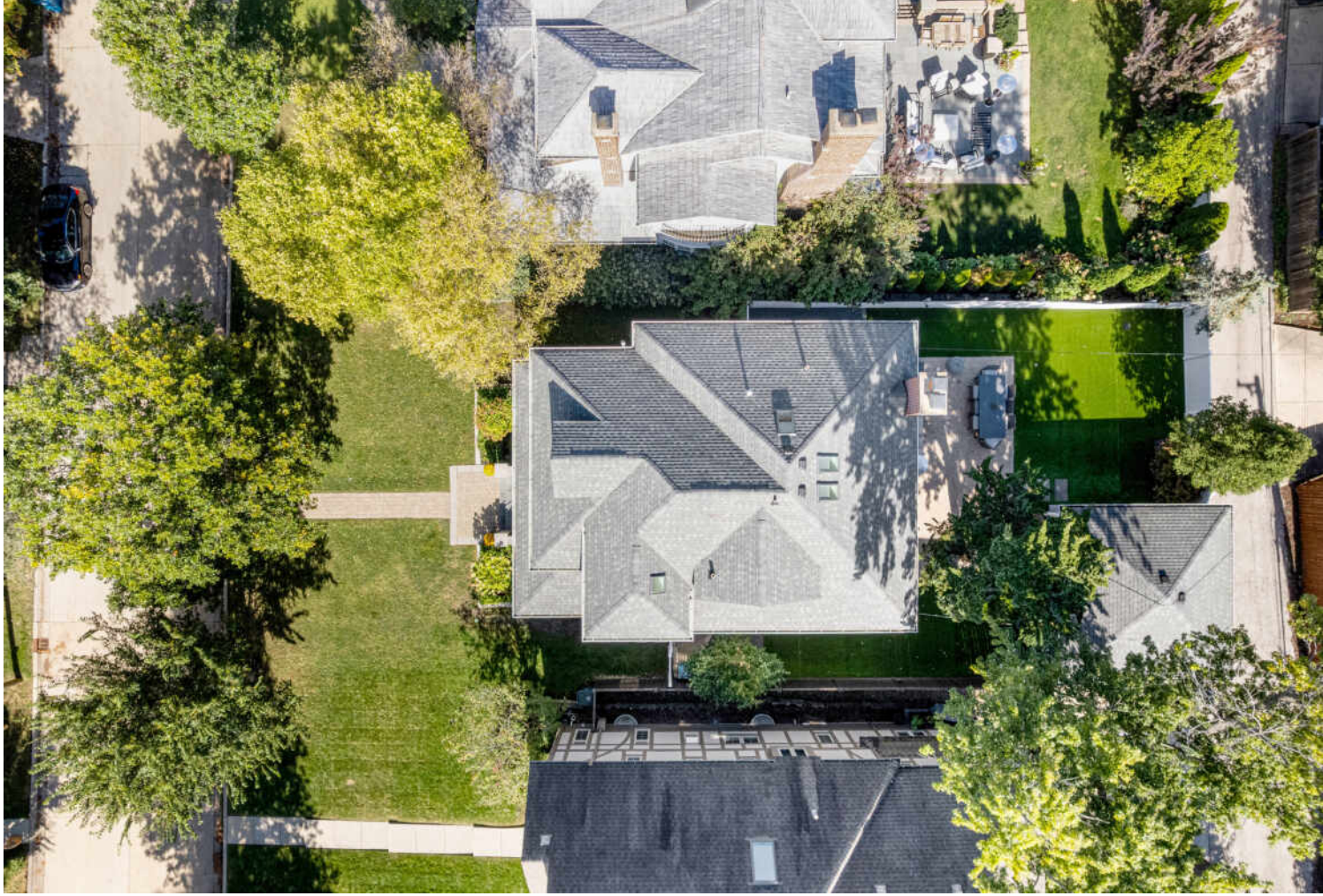




















HINSDALE’S HISTORIC DOWNTOWN AND BEAUTIFUL HOMES ATTRACT SOME OF THE STATE’S MOST AFFLUENT RESIDENTS, EARNING THE SUBURB ITS RANKING AS ONE OF THE WEALTHIEST ZIP CODES IN ILLINOIS.

Locals love the natural beauty and historic elegance of Hinsdale, which boasts a number of scenic parks and architectural landmarks.

Downtown Hinsdale offers a step back in time. The downtown district is on the National Register of Historic Places, with several historic buildings dating back to before the community was incorporated in the 1870s. Residents and visitors will also find award-winning restaurants that will satisfy any palate along with a variety of shops, from jewelry stores and upscale boutiques to craft shops and more.

The community has a wealth of amenities such as the Hinsdale Community Swimming Pool, Katherine Legge Memorial Park, and Burlington Park, which is home to various annual events including the farmers market, Fine Arts Festival, and Uniquely Thursdays concert series. There are also numerous parks and athletic facilities for those who enjoy sports like tennis, baseball, and soccer.

Hinsdale has easy access to the Tri-State Tollway, Stevenson Expressway, and three train stations along Metra’s BNSF Railway.

NEIGHBORHOOD GUIDE MAP



NEIGHBORHOOD GUIDE

RESTAURANTS _____

- 1 **YiaYia's Cafe**
13 GRANT SQUARE, 0.5 MI
- 2 **Vistro Prime**
112 SOUTH WASHINGTON STREET,
0.7 MI
- 3 **Nabuki**
18 EAST 1ST STREET, 0.7 MI
- 4 **Wild Ginger**
44 SOUTH WASHINGTON STREET,
0.7 MI
- 5 **Egg Harbor Cafe**
29 EAST 1ST STREET, 0.8 MI

COFFEE _____

- 1 **Starbucks**
33 SOUTH WASHINGTON STREET,
0.7 MI
- 2 **Toni Patisserie & Cafe**
51 SOUTH WASHINGTON STREET,
0.7 MI

- 3 **Cafe La Fortuna**
46 VILLAGE PLACE, 0.7 MI

SHOPPING _____

- 1 **Walgreens**
15 GRANT SQUARE, 0.5 MI
- 2 **The UPS Store**
3 GRANT SQUARE, 0.5 MI
- 3 **Sweet Ali's Gluten Free Bakery - Hinsdale**
13 WEST 1ST STREET, 0.7 MI
- 4 **Stockholm Objects**
39 SOUTH WASHINGTON STREET,
0.7 MI
- 5 **Vintage Charm Hinsdale**
52 S WASHINGTON ST, 0.7 MI

GROCERY _____

- 1 **Kramer Foods**
16 GRANT SQUARE, 0.5 MI

GYM _____

- 1 **CorePower Yoga - Hinsdale**
34 SOUTH VINE STREET, 0.4 MI

MEDICAL _____

- 1 **Chestnut Medical Center**
534 WEST CHESTNUT STREET, 0.2 MI

SCHOOLS _____

- 1 **Monroe Elementary School**
210 NORTH MADISON STREET, 0.3 MI

TRANSIT _____

- 1 **West Hinsdale**
METRA - BNSF RAILWAY, 0.3 MI
- 2 **Hinsdale**
METRA - BNSF RAILWAY, 0.7 MI

PARKS _____

- 1 **Stough Park**
771 WEST HINSDALE AVENUE, 0.2 MI
- 2 **Eleanors Park**
SOUTH CLAY STREET, 0.4 MI
- 3 **Brook Forest**
211 CHICAGO AVENUE # 10, 0.5 MI
- 4 **Burns Field Park**
BURNS FIELD PARK, 0.5 MI
- 5 **Prospect Park**
315 CHICAGO AVENUE, 0.8 MI

SERVICES _____

- 1 **Chase Bank**
4 NORTH WASHINGTON STREET,
0.7 MI
- 2 **Hinsdale Public Library**
20 EAST MAPLE STREET, 0.7 MI

NO REPRESENTATIONS ARE MADE REGARDING THE ACCURACY OF THE INFORMATION PROVIDED.
ALL DATA IS SUBJECT TO CHANGE AND SHOULD BE VERIFIED WITH LOCAL SOURCES.

@properties® | CHRISTIE'S
INTERNATIONAL REAL ESTATE

Leading REAL ESTATE
COMPANIES
OF THE WORLD®

LP
LUXURY
PORTFOLIO
INTERNATIONAL®

