

220 E ELM STREET
WHEATON





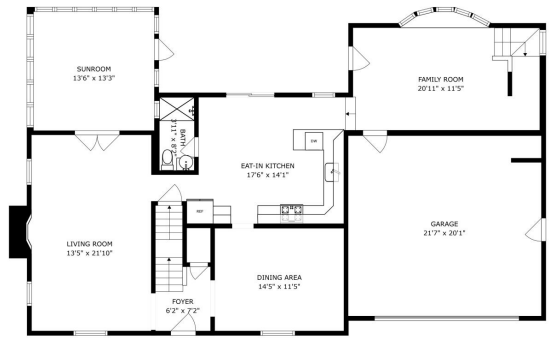
4 BEDROOM
3 BATH
TAXES: \$10,847

Perfectly Located Colonial Style home on a large .32 acre lot in lovely Wheaton neighborhood. Two blocks from beautiful Kelly Park and a half mile from the Illinois Prairie Path. This 4 bedroom, 3 full bathroom home is only 3 minutes from the Elementary and Middle Schools. Easy access to METRA train station and expressways. Beautiful Exterior offers lovely front porch and portico with custom brickwork. Vinyl siding and soffits are in excellent condition and easy care. Custom brick sidewalk around house and retaining wall new in 2022. Brand new asphalt driveway and sealant in 2024. New Dekorator brand deck in 2021 is maintenance free. Large park-like yard has native garden landscaping, newer custom shed, basketball court, and is mostly fenced. New front door and den bay window in 2023. Most windows (wood front, vinyl sides) new in 2019. Hardwood floors and Crown Moulding throughout first floor, except has carpet in the family room. Front stairway has brand new carpeting, and also hardwood underneath. Pretty Kitchen offers quartz countertops, tile backsplash, plenty of cabinets, Whirlpool double oven and microwave 2023. Samsung dishwasher 2023. Garbage disposal. Fantastic 3-Season Sunroom with fan new in 2021. Living room redone in 2024 has Custom hickory entertainment center and custom bookshelves over French doors. Fireplace is wood burning and chimney has been cleaned and serviced. Master bedroom has full bathroom and brand new carpeting. Large bedroom sizes with ceiling fans. Powder room bathroom has newer dual flush toilet, sink, cabinet (2020) and shower (2025). Basement was partially refinished in 2023. Laundry room in basement with newer washer and dryer (2023). All plumbing switched out for copper pipes in 2021. Great water pressure! Must see!

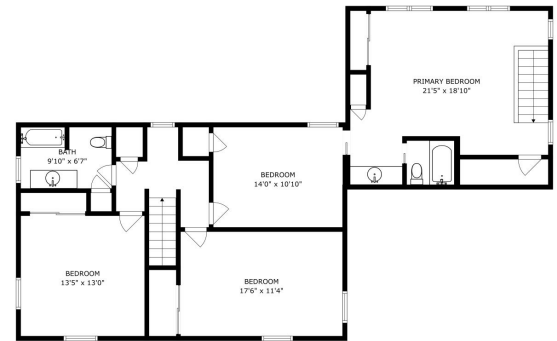




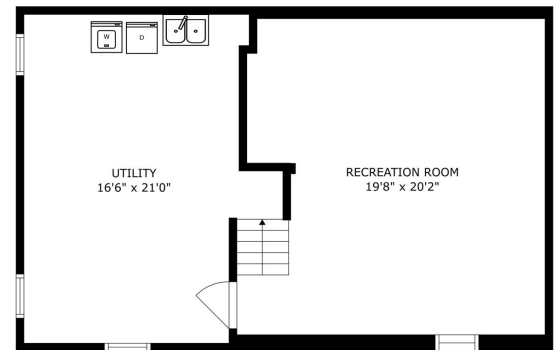




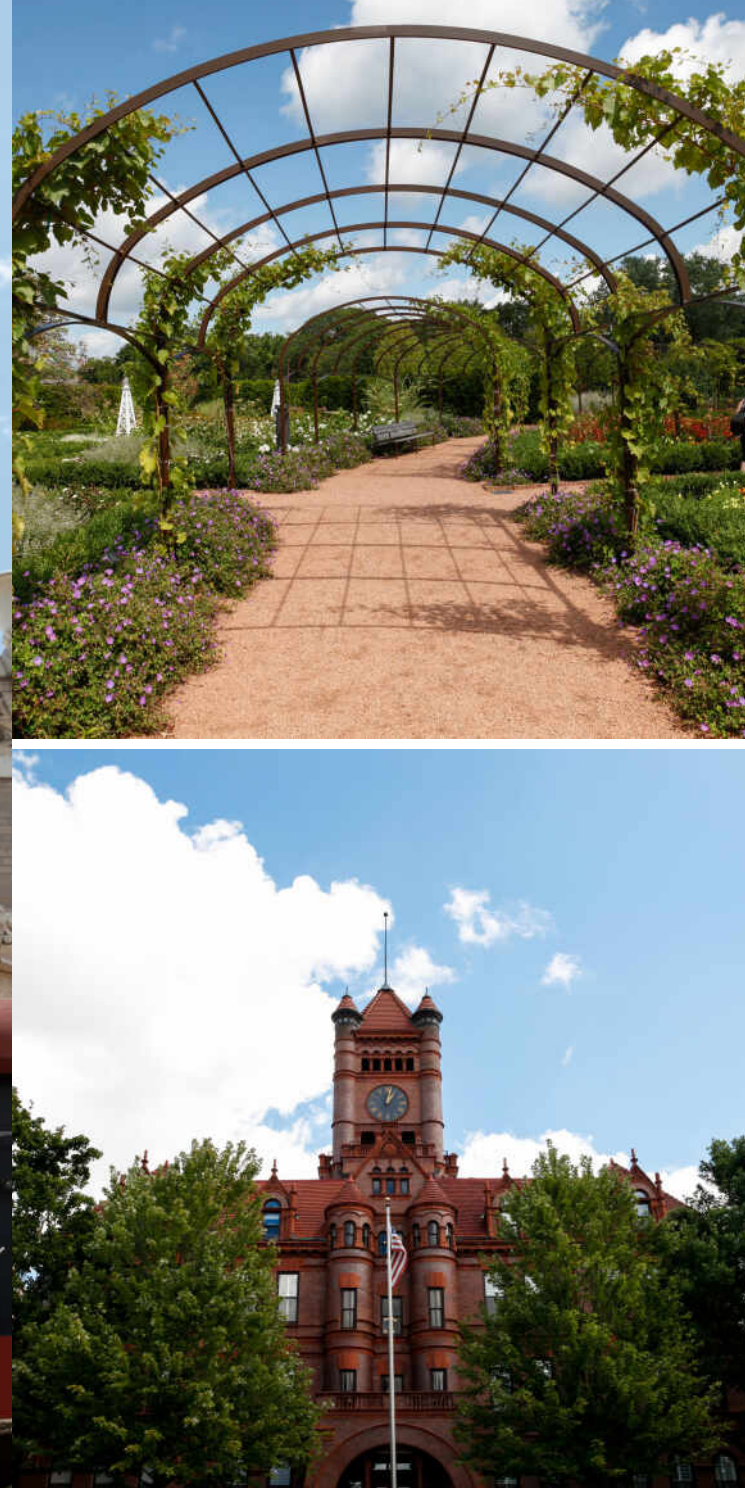
SIZES AND DIMENSIONS ARE APPROXIMATE, ACTUAL MAY VARY



SIZES AND DIMENSIONS ARE APPROXIMATE, ACTUAL MAY VARY



SIZES AND DIMENSIONS ARE APPROXIMATE, ACTUAL MAY VARY



WHEATON HAS RACKED UP MORE THAN ITS SHARE OF AWARDS.

The affluent community ranks among the “top 25 highest earning towns” and one of the best places to live by *Money* magazine.

The Wheaton Public Library is regularly ranked among the top in the nation. The Wheaton Park District, with 52 parks and more than 800 acres, has won several National Gold Medal Awards for Excellence from the National Recreation and Park Association. The park district includes the 135-acre Lincoln Marsh Natural Area with over 300 plant and animal species; the Cosley Zoo, which houses more than 200 animals; and the 27-hole Arrowhead Golf Club.

Wheaton is home to the prestigious Chicago Golf Club, the oldest 18-hole course in the country and host of numerous U.S. Open and U.S. Amateur Golf Championships, and the Cantigny Park and Golf Course, which includes a championship golf course and two museums. The county also owns the Danada Forest Preserve and Equestrian Center, once an estate and home to a Kentucky Derby winner.

The community has seen considerable residential and business development including its landmark, the Wheaton Center, a six-building apartment complex downtown that includes two 20-story high-rise buildings.



NOTES _____



BRIDGET M WAGNER

(630) 400-0658

(630) 377-1700

BRIDGETWAGNER@ATPROPERTIES.COM

WWW.BRIDGETSELLSHOUSES.COM



All specifications, features, designs, price, assessments, taxes and materials are subject to change without notice. Depicted floor plans and architectural renderings are only an artist's impression.

