



221 LAUREL AVENUE
WILMETTE



221 LAUREL AVENUE • WILMETTE

@properties | CHRISTIE'S
INTERNATIONAL REAL ESTATE

LP LUXURY
PORTFOLIO
INTERNATIONAL



MINDY SHEA BROKER

847.833.8571 mobile
847.763.0200 office
mindyshea@atproperties.com
mindyshea.com

the
SHEAGROUP

221 LAUREL AVENUE • WILMETTE





SEMI-CIRCULAR DRIVEWAY AND END OF LANE

221 LAUREL AVENUE, WILMETTE LIVE ON THE GOLF COURSE!

FEATURES

- Rare offering of a third acre of land plus a wonderful 1950's Lannon Stone Mid-Century ranch in East Wilmette, beautifully situated on the golf course at the end of a quiet lane.
- The property is surrounded by spectacular protected views of the golf course including a wildlife preserve to the south.
- This house is a period piece with an open floor plan including four bedrooms, three baths and a sun-room/family room overlooking the slate patios and private yard.
- There is a true en-suite master bedroom with a private hallway, his and hers closets and a full bath.
- The kitchen is a rare find, a retro original Poggenpohl.
- Enjoy watching the sunrise over a panorama of grass and treetops; enjoy the sunset reflecting off of the Bahai in a glow of pinks and red and all just a stroll to the beach, lake, harbor, school, transportation and town.
- The property offers the option of building your dream house or renovating a captivating Mid-Century ranch.



MINDY SHEA BROKER

847.833.8571 mobile
847.763.0200 office

mindyshea@atproperties.com
mindyshea.com





FEATURES (CONTINUED)

This is a truly rare offering of land plus a Mid Century Home in East Wilmette. It's a beautiful large lot measuring 60' x 224' on the golf course with a 1950's Lannon Stone Ranch offering three sides of incredible golf course and protected wilderness preserve views on the end of lane. Watch the sunrise over a panorama of grass and trees; enjoy the sunset reflecting off the Bahai in a glow of pinks and reds and all just a short stroll to the beach, lake and harbor, transportation and town. The oversized lot is 13,440 sq ft. The house is a period piece from the 50's with all living space on one level. There is a slab with a partial basement for laundry, storage and mechanicals. The open floor plan has huge windows with gorgeous views from the living room, dining room, kitchen, family room, den and primary bedroom. The large master is en-suite with a full bath, his and hers closets and a private hall to adjoining bedroom, as well as overlooks the beautiful back yard. The large living room features the original Lannon stone fireplace, huge windows overlooking the golf course and lovely built-in bookcases. A large family room/sun room opens to a slate patio and huge back yard. The retro Poggenpohl Kitchen has table space and an efficient layout. The property offers the choice to tear down and rebuild or renovate. It is in walking distance to the train, EL, town, lake, beach, harbor and school. Property is sold "AS IS."

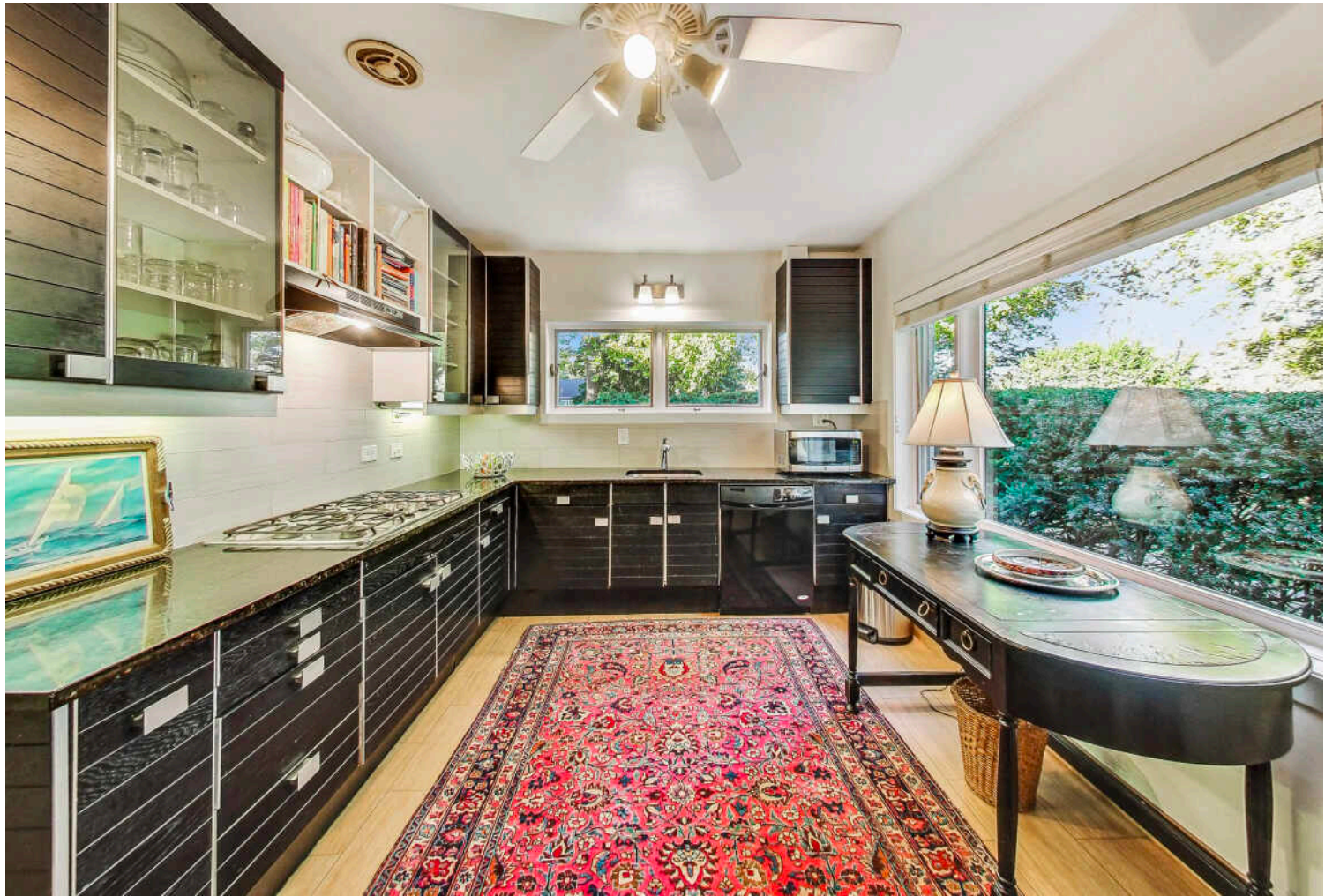




LIVING ROOM



DINING



KITCHEN







FAMILY ROOM

















RANKED BY *CHICAGO* MAGAZINE AS ONE OF THE CHICAGO AREA'S BEST PLACES TO LIVE, **WILMETTE** IS A VIBRANT TOWN WITH A WEALTH OF AMENITIES.

Locals love the convenience that comes with living in this picturesque North Shore community. From shopping and fine dining to a beautiful lakefront setting that's within easy reach of downtown Chicago, Wilmette has it all.

When it comes to housing, there's no shortage of architectural styles and price points in this lakefront community. Quintessential Cape Cod, Victorian, and Colonial homes line the village's historic streets, many of which are paved with clay-fired bricks from the 1800s. In addition to single-family homes, there are beachfront condominiums and townhomes. While well-kept homes maintain Wilmette's rich architectural history in all of its glory, new construction attests to the village's enduring popularity.

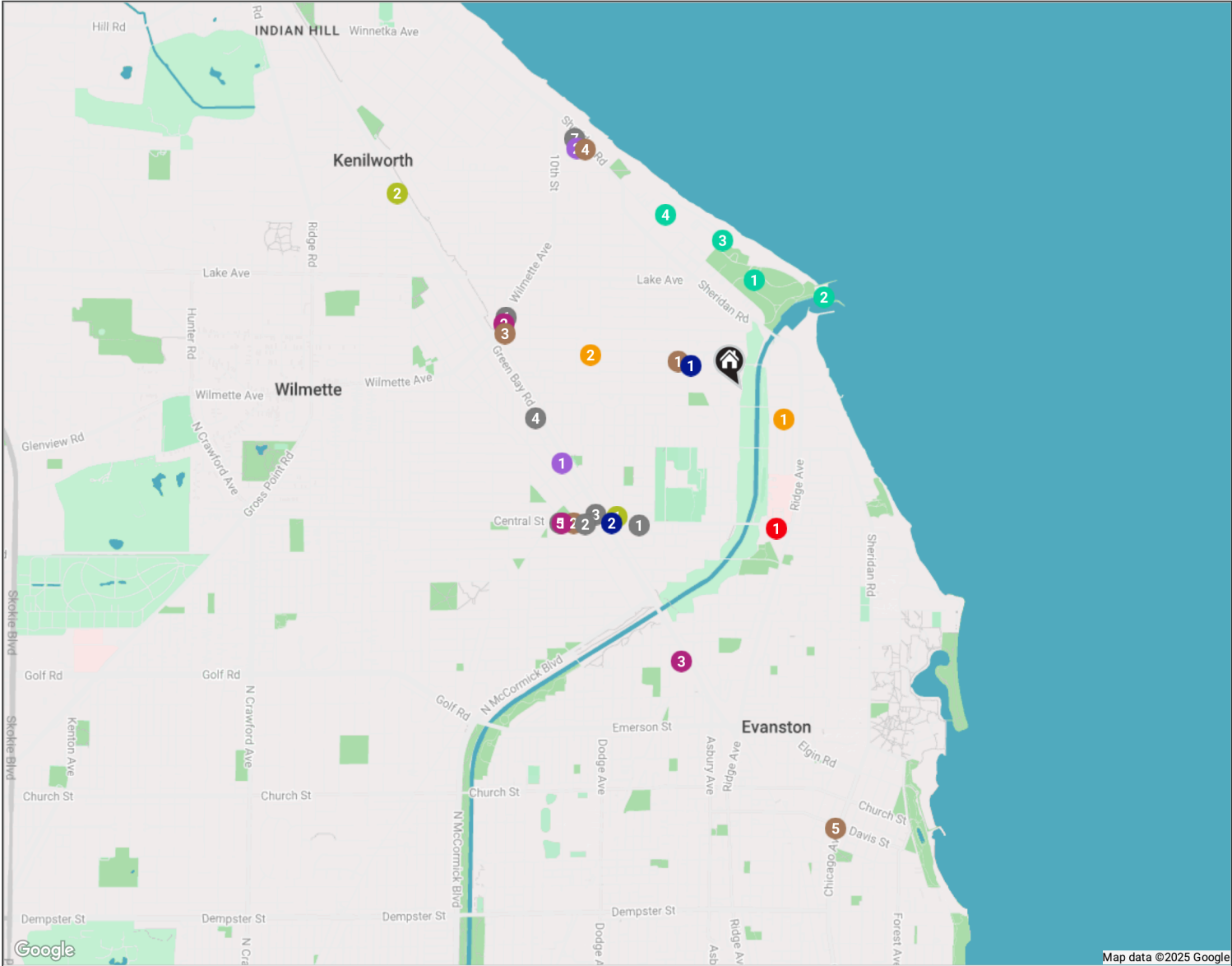
Residents also have access to nationally recognized New Trier High School, located in Winnetka.

Wilmette's Metra station and access to I-94 make commuting to downtown Chicago a breeze, but there's plenty of reasons to stay local. At the heart of town is the Village Center, where you'll find specialty stores, restaurants, and the Wilmette Theatre. Along Sheridan Road there is Plaza del Lago, providing more shops and services to locals. Meanwhile, ample recreational activities are available at Gillson Park and beach, Wilmette Harbor, and the Centennial Recreation Complex, which includes swimming, tennis, and ice skating.

NEIGHBORHOOD GUIDE MAP

221 LAUREL AVENUE

22



NEIGHBORHOOD GUIDE

RESTAURANTS

- 1 Ten Mile House
1700 CENTRAL STREET, 0.7 MI
- 2 Bluestone
1932 CENTRAL STREET, 0.8 MI
- 3 Jilly's Cafe
2614 GREEN BAY ROAD, 0.8 MI
- 4 Walker Bros. Original
Pancake House
153 GREEN BAY ROAD, 0.9 MI
- 5 Foodstuffs Gourmet Foods
& Catering
2106 CENTRAL STREET, 0.9 MI
- 6 Valley Lodge Tavern
1141 CENTRAL AVENUE, 1.0 MI
- 7 Convito Cafe & Market
1515 SHERIDAN ROAD #5, 1.2 MI

COFFEE

- 1 Alchemy Coffee & Bake
House
416 LINDEN AVENUE #2845, 0.3 MI

- 2 Backlot Coffee
2006 CENTRAL STREET, 0.9 MI

- 3 Panera Bread
1199 WILMETTE AVENUE, 1.0 MI

- 4 Starbucks
1515 SHERIDAN ROAD, 1.2 MI

- 5 Pâtisserie Coralie
600 DAVIS STREET, 1.8 MI

SHOPPING

- 1 Paper Source
2100 CENTRAL STREET, 0.9 MI
- 2 The UPS Store
1189 WILMETTE AVENUE, 1.0 MI
- 3 Walgreens
2100 GREEN BAY ROAD, 1.1 MI

GROCERY

- 1 Whole Foods Market
2748 GREEN BAY ROAD, 0.8 MI

- 2 Jewel-Osco
1517 SHERIDAN ROAD, 1.2 MI

GYM

- 1 Northshore Pilates
2609 BROADWAY AVENUE, 0.7 MI
- 2 yogaview Wilmette
1231 GREEN BAY ROAD, 1.6 MI

MEDICAL

- 1 UChicago Medicine at
NorthShore University
HealthSystem - Evanston
1000 CENTRAL STREET SUITE 800,
0.6 MI

SCHOOLS

- 1 Baker Demonstration
School
201 SHERIDAN ROAD, 0.2 MI
- 2 St Francis Xavier School
808 LINDEN AVENUE, 0.6 MI

TRANSIT

- 1 Linden
CTA - PURPLE LINE, 0.2 MI
- 2 Central St
METRA - UNION PACIFIC NORTH,
0.8 MI

PARKS

- 1 Gillson Park
WILMETTE, 0.5 MI
- 2 Gillson Park Dog Beach
WILMETTE, 0.5 MI
- 3 Wilmette Park Sailing
100 E LAKE ST, 0.6 MI
- 4 Elmwood Dunes Preserve
ELMWOOD AVENUE, 0.8 MI

