



221 MEADOWBROOK LANE HINSDALE



221 MEADOWBROOK LANE • HINSDALE

@properties | CHRISTIE'S
INTERNATIONAL REAL ESTATE

LP LUXURY
PORTFOLIO
INTERNATIONAL



BRYAN BOMBA BROKER

630.286.9242 mobile
bryan@bryanbomba.com
www.hinsdalearearealestate.com

 **bryanbombagroup**

221 MEADOWBROOK LANE • HINSDALE





221 MEADOWBROOK LANE CUL-DE-SAC PRIVACY MEETS WALK-TO-SCHOOL
CONVENIENCE

ROOM DIMENSIONS

Living Room	14'x19'
Dining Room	16'x15'
Kitchen	23'x15'
Breakfast Nook	9'x10'
Sitting Room	20'x17'
Family Room	17'x21'
Primary Bedroom	14'x17'
Bedroom Two	10'x12'
Bedroom Three	14'x12'
Bedroom Four	11'x17'
Bedroom Five	11'x12'
Recreation Room	37'x28'

FEATURES

Tucked away on one of Hinsdale's few true cul-de-sacs, this classic brick two-story offers the peace, privacy, and family-friendly location city buyers crave. Just two blocks from Elm Elementary via sidewalk, the morning walk to school couldn't be easier-or safer. The backyard is something special: it backs to a wide-open green space, offering rare privacy and exceptional room to play, entertain, or just breathe. Inside, the home blends timeless appeal with thoughtful updates: a large family room addition, oversized breakfast room, vaulted ceiling in the owners' suite, and a flexible first-floor bedroom or office with full bath. You'll appreciate the fresh, move-in-ready condition and dual laundry locations- conveniently placed on the second floor and lower level. Walk to award-winning Hinsdale Central High School, and be sure to ask about the hidden shortcut to Elm School. Homes on streets like this rarely come available-especially with a setting this quiet, and a yard this extraordinary.



BRYAN BOMBA BROKER

630.286.9242 mobile bryan@bryanbomba.com
www.hinsdalearearealestate.com

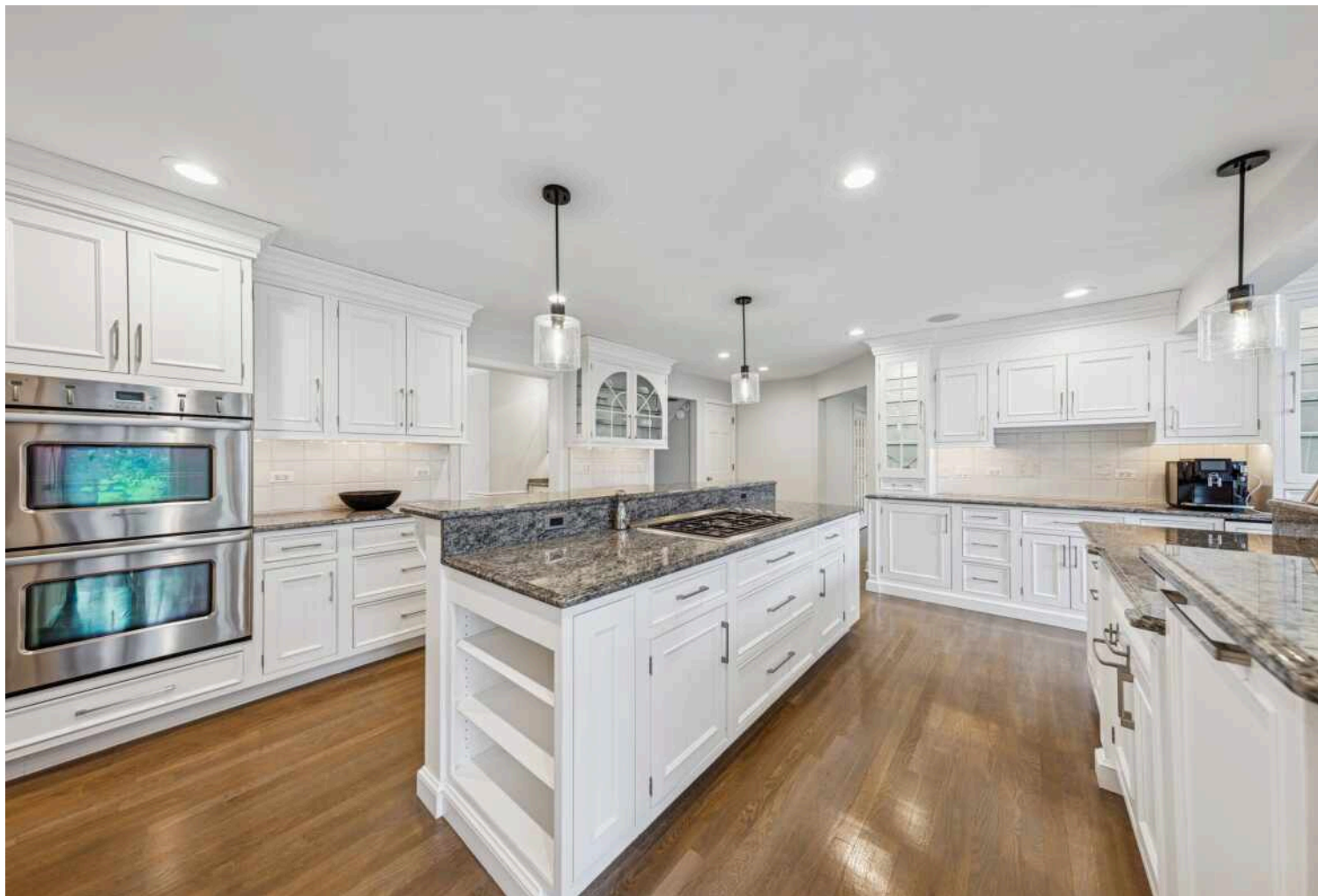




































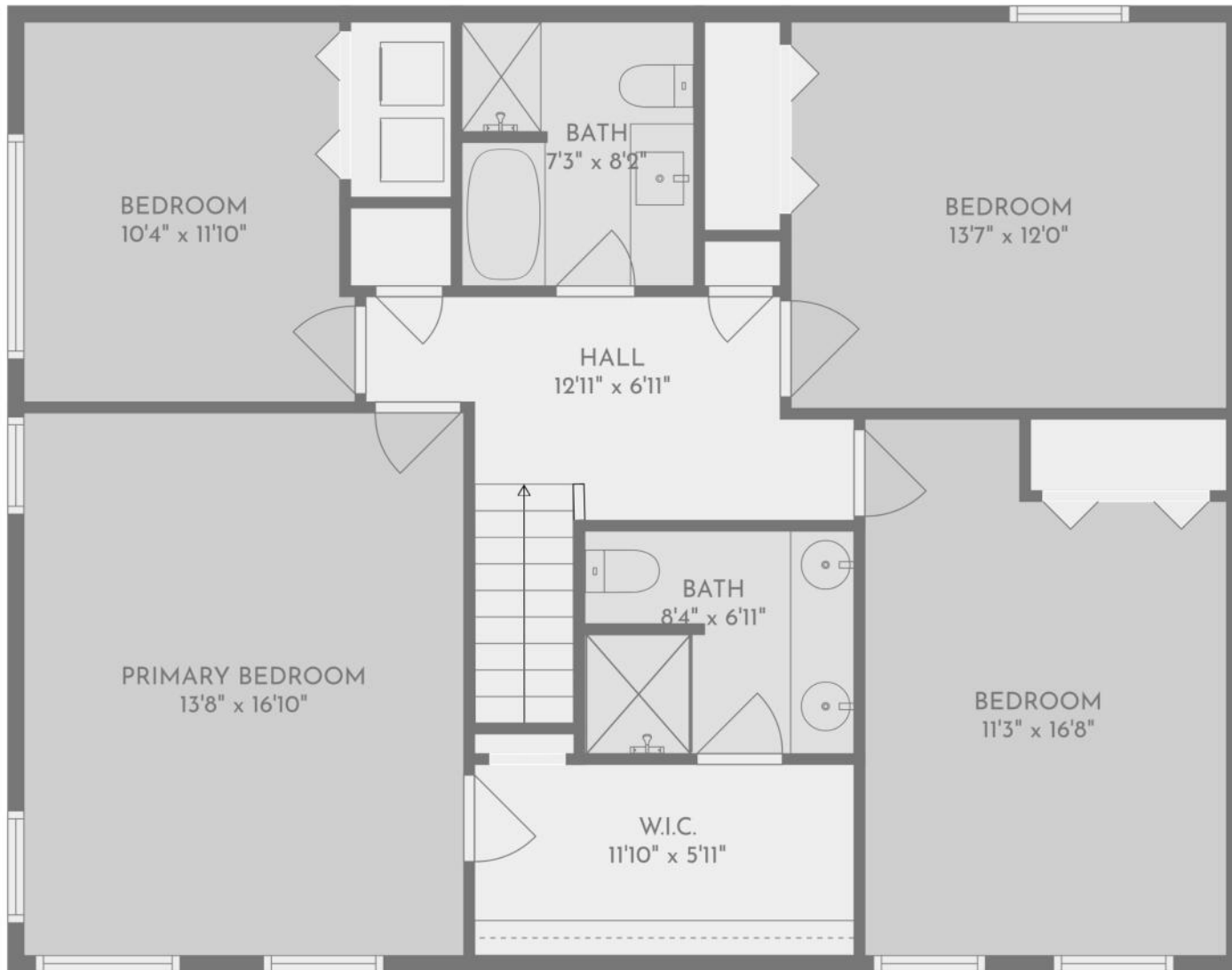


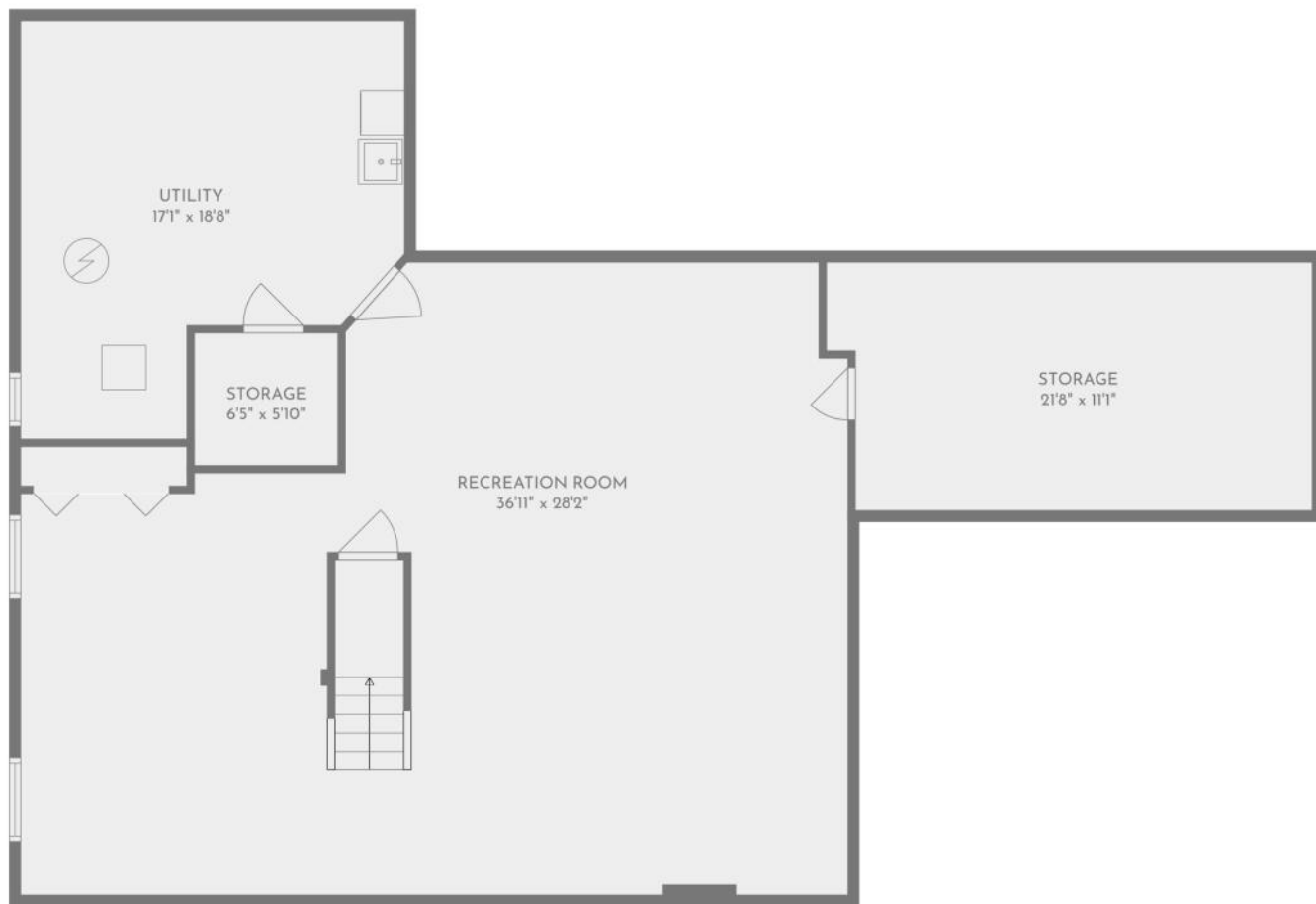














HINSDALE’S HISTORIC DOWNTOWN AND BEAUTIFUL HOMES ATTRACT SOME OF THE STATE’S MOST AFFLUENT RESIDENTS, EARNING THE SUBURB ITS RANKING AS ONE OF THE WEALTHIEST ZIP CODES IN ILLINOIS.

Locals love the natural beauty and historic elegance of Hinsdale, which boasts a number of scenic parks and architectural landmarks.

Downtown Hinsdale offers a step back in time. The downtown district is on the National Register of Historic Places, with several historic buildings dating back to before the community was incorporated in the 1870s. Residents and visitors will also find award-winning restaurants that will satisfy any palate along with a variety of shops, from jewelry stores and upscale boutiques to craft shops and more.

The community has a wealth of amenities such as the Hinsdale Community Swimming Pool, Katherine Legge Memorial Park, and Burlington Park, which is home to various annual events including the farmers market, Fine Arts Festival, and Uniquely Thursdays concert series. There are also numerous parks and athletic facilities for those who enjoy sports like tennis, baseball, and soccer.

Hinsdale has easy access to the Tri-State Tollway, Stevenson Expressway, and three train stations along Metra’s BNSF Railway.





