

2230 S LINCOLN STREET #318
LOMBARD





ROOM DIMENSIONS

LIVING ROOM : 19' x 15'

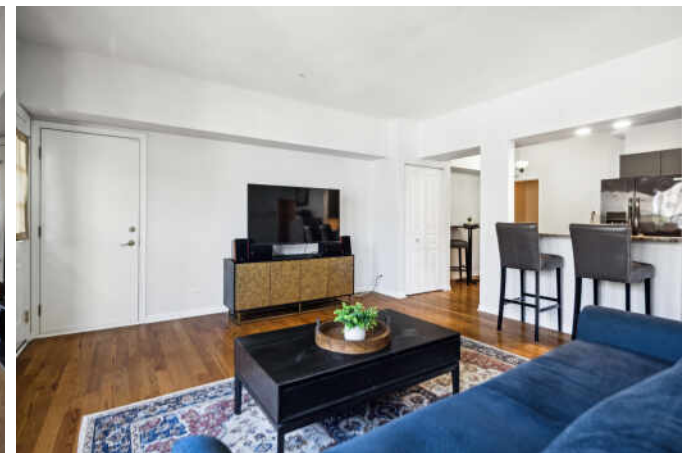
FAMILY ROOM : 29' x 20'

KITCHEN : 14' x 11'

PRIMARY BEDROOM : 15' x 12'

SECOND BEDROOM : 12' x 10'

Rarely available end unit ranch with a fully finished walkout basement! Step into this bright and cozy home featuring 2 bedrooms upstairs, each with its own balcony. The primary bedroom boasts a full master bath and a walk-in closet. Enjoy the elegance of real hardwood floors throughout. The beautiful bay window in the living room floods the space with natural sunlight. The recently updated kitchen is tastefully designed with sleek soft close cabinets, granite countertops, stainless steel appliances, and a brand new fridge. The full walkout basement is bright and sunny, featuring a wet bar, ample living space, and room for an extra bedroom. The updated downstairs bathroom includes a custom glass shower surround and a whirlpool bath. Sliders open to a patio and a wide open green space. Additionally, there's a large laundry room with extra storage space and an attached garage with an epoxy floor. This convenient Lombard location is close to shopping, restaurants, entertainment and easy access to highways.

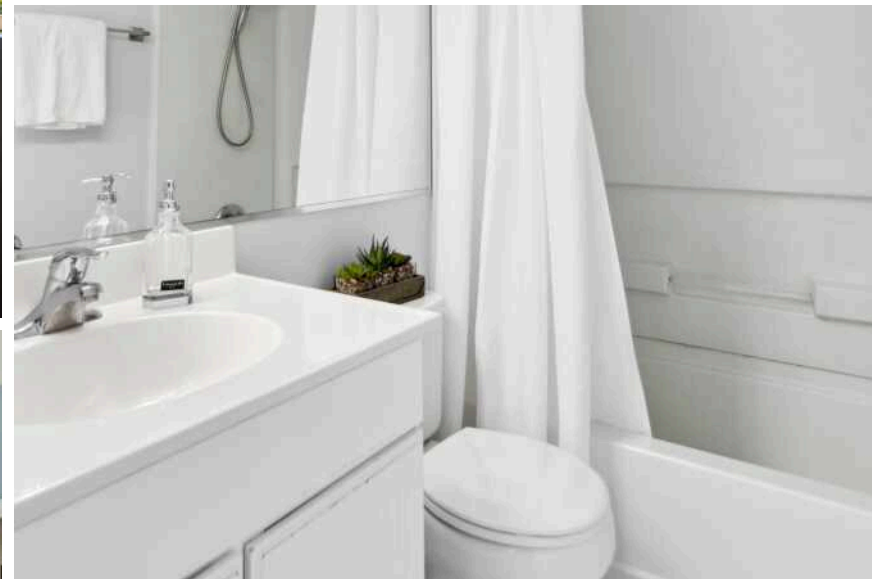


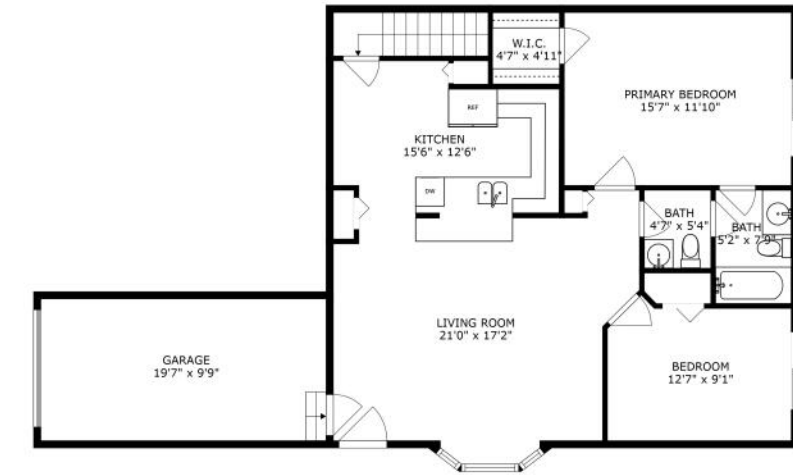
2 BEDROOM

2.1 BATH

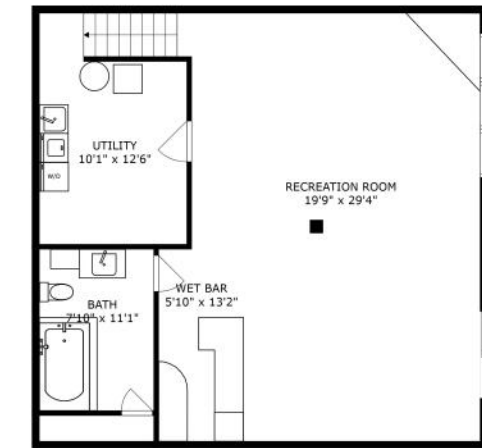
TAXES: \$6,623

ASSESSMENTS: \$302 / MONTH





FLOOR 2



FLOOR 1

SIZES AND DIMENSIONS ARE APPROXIMATE, ACTUAL MAY VARY.





DESIGNATED THE "LILAC VILLAGE," **LOMBARD** IS CHARACTERIZED BY ITS QUAIN, TREE-LINED STREETS AND CLOSE-KNIT COMMUNITY.

Lombard residents are proud of the village's rich history, diverse entertainment opportunities, and unique seasonal events such as Cruise Nights and Summer Concert Series, which puts vintage vehicles and live music on display throughout the summer.

Since 1930, the village has hosted an annual lilac festival and parade in May. Lilac Time is Lombard's famed 16-day horticultural festival held at the beautiful Lilacia Park. Several other lilac-themed events take place throughout the year, including a formal ball, concerts, wine and beer tastings in the park, and an arts and crafts fair.

Metra's Union Pacific West Line railway stops in Lombard, providing commuter transportation to downtown Chicago.



NOTES _____



AMY RUMINSKI

(630) 550-3304

(630) 530-0900

AMYR@ATPROPERTIES.COM

